

Booters Bump Bullets; Unbeaten Streak At 19 After 5-2 Road Victory

By BUD FENTON

Bill Jeffrey's soccer giants crushed Gettysburg College yesterday, 5-2, to extend their undefeated streak to 19 games. The victory which was the fourth straight of the season, showed the superiority of the National Co-Champions as they tallied in each of the four quarters.

Five men took part in the scoring as the passing work of the Nittany forward line proved too much for the bewildered Bullets. The Gettysburg goals were scored in the third and fourth quarters when the game was slowed down by rough play and penalties. One of Penn State's goals was counted on a penalty kick.

Clarence "Buzzer" Buss opened the Lion scoring parade at 12:25 of the first period. Buss had previously tallied the winning goal in the 1-0 victory over Navy last Saturday.

Gus Bigott, a veteran of the 1938 team tallied his first of the season after only 45 seconds of the second quarter.

The third goal was Gary Nugent's first of the year when he scored a 12-yard penalty boot at 1:00 after the kick-off in the second half. Captain Harry Little and Ron Coleman accounted for the last two Lion scores but not before Gettysburg came to life and made the scoreboard read 3-1 at the end of the third quarter.

Little hit the Bullet goal at 10:10 of the final period and Coleman followed suit at 16:15. The losers made it 5-2 a minute later.

but the State booters held the three-goal lead for the remainder of the game.

The referees played a prominent part in the contest as the game developed and several "rhubarbs" among players and officials occurred. One of these resulted in the ejection from the game of Penn State flulbaek Jay Simmons.

The game was won without the leading scorer of the team and possibly of the country. Joe Lane. Lane has been sidelined by an injured ankle and has not played more than a few minutes of the last two games. The blonde speedster has tallied 9 times in two full games he has played.

For Best Results Use Collegian Classifieds

Hort Show

Saturday & Sunday, Oct. 28, 29 in the Pavilion



ATTENTION

MR. AND MISS FRESHMAN



WE TREAT YOU LIKE A SENIOR

Get Next To Our Low Cleaning Prices Save Your Dough

STATE COLLEGE LAUNDERETTE 210 W. COLLEGE AVE.

Open Mon. 7:30 a.m. to 8 p.m.; Tues. thru Sat. 7:30 to 6 p.m.

SENIORS!

IN THE SCHOOL OF HOME ECONOMICS HAVE YOUR PICTURES TAKEN FOR THE 1951 LA VIE

from

October 25 -- Wednesday to October 28 -- Saturday

Penn State Photo Shop

214 E. College Ave.

NO APPOINTMENTS NECESSARY

DSPhi Jars ATO In Scoring Duel

In the highest scoring duel of the IM touch football season, Delta Sigma Phi rallied from an early 0-6 deficit to defeat Alpha Tau Omega, 20-12. Other contests saw the independent Be-To's top Dorm 40 for their second league win, 12-0, Chi Phi down Theta Xi, 6-0, and the Hamilton A's forfeit to the Marauders.

Delta Sig's Frank Feracco, Larry Gedda and Chuck Ludman produced the markers for their team's second victory. They had previously defeated Phi Epsilon Pi, 6-0. Chi Phi also triumphed for the second time when Jim Lear raced 45 yards with an intercepted pass.

Chi Phi downed Delta Theta Sigma, 1-0 in their first contest. Clint Burchill's fine passing sparked the winners throughout the battle.

The Be-To's, winners over the Tigers, 1-0, in their initial loop encounter, hung up their second triumph tonight over an out-classed Dorm 40 nine, who kept pace with the victors until the second half. It was the Marauders' second win tonight, also. They had topped Watts' Spark-plugs, 7-6.

SPE, PiKPhi, Delta Chi, Victors In IM Swimming

In the three dual meets at result of today's victories, all three winners have advanced to the third round. Glennland pool yesterday afternoon, natators from Sigma Phi Epsilon, Pi Kappa Phi, and Delta Chi emerged victoriously as the second round of IM swimming was completed.

In the meets held, Sigma Phi Epsilon easily outscored Theta Kappa Phi, 34-6; Pi Kappa Phi routed Beta Theta Pi, 24-16; and Delta Chi dunked Alpha Chi Sigma 28-12.

Bob Fitzgerald, Sigma Phi Epsilon's ace merman, sparked his team to victory with a triple triumph. Fitzgerald won the 60-yard free-style, breast stroke and individual diving honors. PKP's winged-merman, Howard Davidson won the 60-yard back stroke and breast stroke, while his teammate Dick Jung displayed some spectacular low-board diving. Andy Harvey, Delta Chi's only double winner, won the 60-yard free-style and back stroke. As a

STARLITE DRIVE-IN

on BELLEFONTE ROAD

Shows 7 and 9 P.M.

WEDNESDAY

"The Hasty Heart"

starring RONALD REAGAN PATRICIA NEAL

Also Selected Short Subjects

THURSDAY & FRIDAY

"Twelve O'Clock High"

with Gregory Peck

also Selected Short Subjects

PRINTING

Free Estimates, Quick Service

Commercial Printing Inc.

Glennland Bldg., State College

Support CAMPUS CHEST

Starts Oct. 28

Give Once...

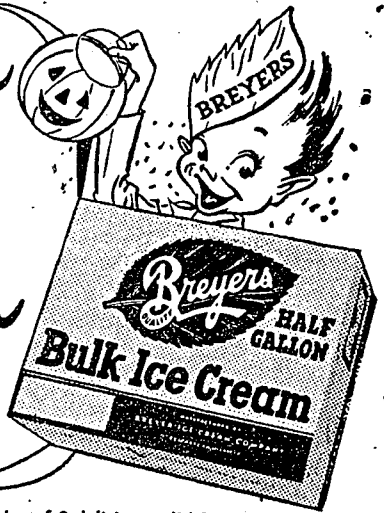
Serve All

Hallowe'en Parties

CALL FOR BREYERS

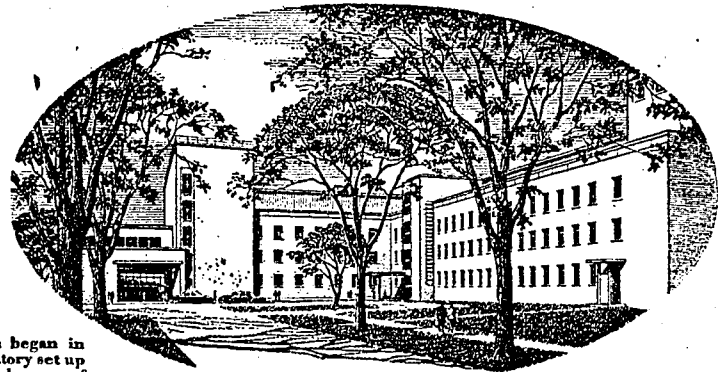
Half Gallon

ONLY \$1.15



Your friendly Breyer Dealer has your choice of 8 delicious solid flavors... and 2 popular Half 'n' Half flavor combinations in this money-saving Half Gallon.

50 YEARS of General Electric Research



Industrial research began in 1900 in G-E laboratory set up in barn behind home of Charles P. Steinmetz.



When the General Electric Research Laboratory was established in 1900, it was the first industrial laboratory devoted to fundamental research.

At that time E. W. Rice, Jr., then vice president of General Electric, said:

Although our engineers have always been liberally supplied with every facility for the development of new and original designs and improvements of existing standards, it has been deemed wise during the past year to establish a laboratory to be devoted exclusively to original research. It is hoped by this means that many profitable fields may be discovered.

Many profitable fields were discovered—profitable not only for General Electric but also for industry, the American public, and the world.

A half century ago the industrial experimental laboratory was itself an experiment. This month it begins its second half-century with the dedication of a new building, greatly augmenting the facilities it offers to the advancement of man's knowledge.

You can put your confidence in...

GENERAL ELECTRIC