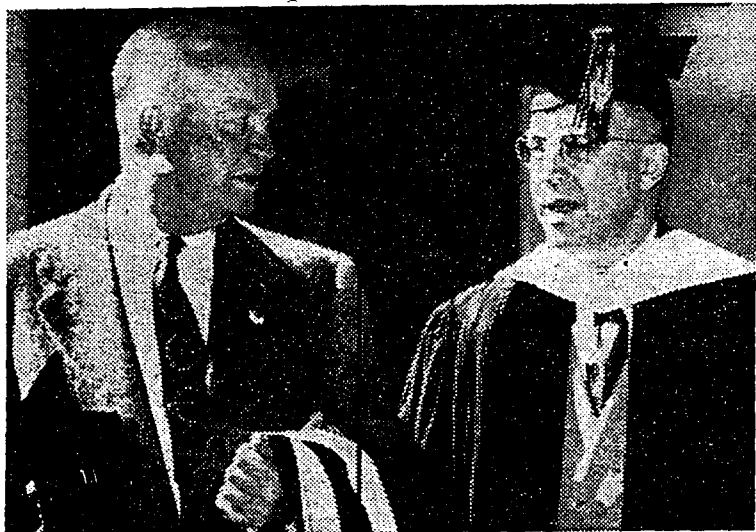
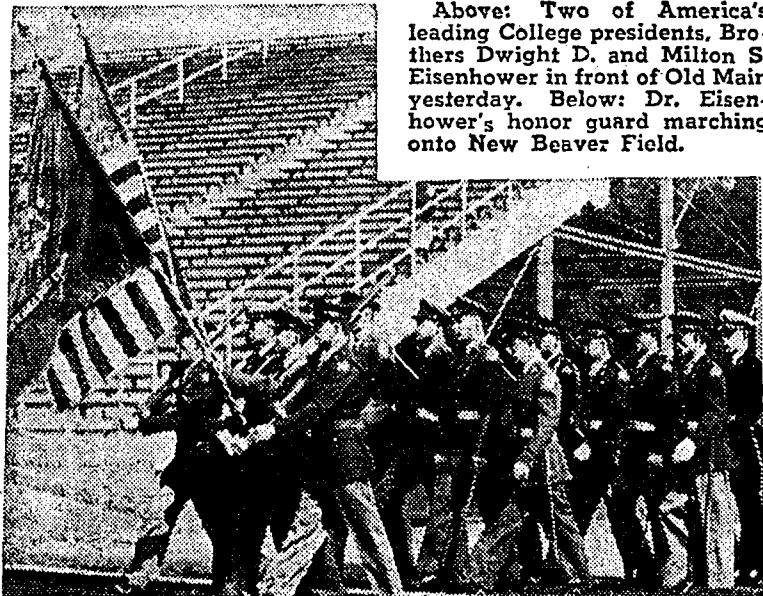




Top: A view of collegiate and learned society delegates to yesterday's inauguration. Foreground shows the guard which ringed the rostrum. Circle: All-College Pres. Robert Davis extends student greeting. Lower Left: Prof. Alma McDougall and student Frank Kehs ready a table at Wednesday night's Presidential Reception. Lower right: Lucy Varano and Rose Lerman persuade Gen. Eisenhower's driver, Leonard Dry, to get the general's autograph and mail it from New York.



Above: Two of America's leading College presidents, Brothers Dwight D. and Milton S. Eisenhower in front of Old Main yesterday. Below: Dr. Eisenhower's honor guard marching onto New Beaver Field.



# Community Concert Series Signs Indianapolis Symphony

The Indianapolis Symphony Orchestra, has been signed to appear in the Community Concert series on Feb. 9, W. E. Kenworthy, chairman of the board, announced yesterday.

The announcement came as solicitors reported over 900 of the 1230 memberships already sold. Relatively few subscriptions have been sold to students, John Thayer, in charge of sales, said in revealing the figure.

## Inauguration Sidelights

One evidently unimpressed with the ceremonies could only remark, "What a seat for a football game."

Despite the sunny skies many found the shaded stands chilly enough to wear sweaters and topcoats. Some of the faculty members and married veteran-students brought along their youngsters. Some were even equipped for rapid changes and feeding, but others were not equipped to prevent some untimely bawling.

Cameras were popping from all over the stands as well as the field. Celebrity seekers even high in the grandstand could spot Gen. Dwight D. Eisenhower by watching press photographers who kept shooting at him during the speeches.

About six hardy tennis players refused to give up their courts until the program actually began. They came right back again when the program ended.

Comments and wisecracks showed the audience could appreciate humorous angles in the midst of a rather sober academic ritual. When Dr. Eisenhower reached for a water glass during his speech, for instance, one asked if he carried his own milk shakes.

After the speakers filed onto the platform, the College marshal, Prof. David H. McKinley, began to check off the honored guests in the front section. Commented one student, "He's probably taking role."

Wednesday night, the Glee club went to the President's mansion to serenade the Eisenhowers after the inaugural reception. They went into their song, and General and Mrs. Dwight Eisenhower came out and told them that President and Mrs. Eisenhower were still at White hall, where a reception was being held.

The glee club moved over to the hall, called the President and his wife out on the porch, and once again sang the "Fight Song", "Blue and White", and the Alma Mater.

## Freshmen, Hatmen Serve As Ushers

Freshmen were pressed into service as ushers at yesterday's inauguration when the junior hat societies ran short of men for the job.

Over 30 freshmen were stationed in the stands under the supervision of men from Blue Key and Androcles. Hatmen scoured the campus for volunteers among the freshmen an hour before the scheduled start of the ceremonies.

Frosh ushers wore dinks and bow ties with signs optional. Two were placed in every section of the stands.

## WALLET PHOTOS 20 for \$1.00

Perfect for application or Friendship Photos. 2 1/2 x 3 1/2 double weight prints on best quality silk finish paper. Mail your portrait NOW for prompt service. Any size photo will make good reproductions. Original returned unharmed. Please include 15c for postage and handling.

Satisfaction Guaranteed  
**MAIL TO-DAY CO.**  
P.O. Box 1112, Altoona, Pa.

"We hope students will take advantage of the few remaining memberships," Thayer said. "Most of the subscriptions so far have been sold to townspeople and faculty."

### 95-Piece Orchestra

The volume of membership sales enabled the concert committee to book the 95-piece Indianapolis orchestra. Fabian Sevitzyk will conduct. The concert committee secured a hold date on the orchestra last May, Kenworthy said.

Other numbers in the series will be announced next week.

Both Kenworthy and Thayer again emphasized the fact that memberships are limited to 1230, the seating capacity of Schwab auditorium.

No seats will be sold for individual performances, and the \$8 membership entitles the holder to any seat in the auditorium.

Solicitors were again urged to report sales promptly, since any memberships contracted after the 1230 are sold will have to be returned.

### Campaign Closes Tomorrow

With the campaign set to close at noon tomorrow, the headquarters in 204 Old Main will remain open until 9:30 tonight.

While the sale of memberships will close on schedule whether or not all have been sold, Thayer predicted that the last of the 1230 seats would be sold today.

The Community Concerts service was brought to State College to replace the old Artists' course, which was discontinued last year.

Community concerts, operating on a no profit-no loss basis, sells series memberships and then books artists on the amount available.

The service is an international one, with over 1000 American and Canadian communities employing it. It has headquarters in New York and Chicago.

## PSCA Tour Still Open

All students interested in joining the Penn State Christian association tour to the United Nations, Oct. 22 to 24, should register in the PSCA office, 304 Old Main immediately, Luther Harshbarger, executive secretary of the PSCA, announced yesterday.

The group will leave State College Sunday morning, Oct. 22, and will travel by station wagon to Lake Success. It will attend sessions of the General Assembly and the Security Council Monday and Tuesday, Oct. 23 and 24. Plans are being made to have conferences with Mrs. Eleanor Roosevelt, Ralph Bunche, and members of the delegations of the United States, England, India and the countries of the Mid-East.

The trip was arranged through Dr. Andrew Cordier, executive assistant to the Secretary General. A registration fee of \$5 will be charged and advanced toward the cost of the trip.

## Receives Seal -

(Continued from page one)

head of the Music department, the procession stretched one-eighth of a mile from the field entrance.

At the end of the long line was the platform party, headed by James Smith, College chaplain. Members of the party were Davis, Duncan, Duff, Stoddard, Milholland, and Dr. Eisenhower.

The honor guard already had stationed themselves around the platform. They remained there throughout the 95-minute ceremony.

It took 15 minutes for the entire procession to enter the field and be seated facing the platform, which had been erected in front of the west stands.

The weather was ideal. President Eisenhower remarked at his press conference later, "I hope things turn out as well later as the weather situation did today."

## DINNER MUSIC AND DANCING NIGHTLY



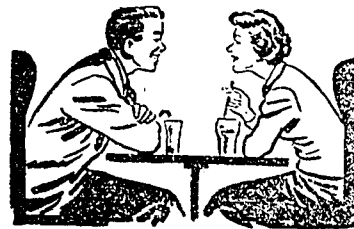
### Tommy Burke Trio

PIANO, SAX, NOVACHORD, CLARINET and BASS  
Listen to one of the most outstanding blind pianists in the country



TYRONE

## You're at Home at the Corner



- Convenient
- Good Food
- Courteous Greetings and Treatment

the **CORNER**  
unusual