

# Hoya Tilt To Test New Defense Unit

## Untested Linemen May Be Answer To Grid Problem

By MARV KRASNANSKY

Although they are yet to be tested under the fire of battle, the eight stout men whose job it is to stop the opposition's running games may well prove to be the bellwether of the Nittany defensive game.

When the gridgers returned to camp early in the Fall, one of the biggest problems facing Coach Rip Engle, and Sever Toretti and Joe Bedenk, his assistants in charge of the line, was molding a defensive unit that would offer a strong barrier to enemy ball carriers and wail the devil out of the passers. Patience and hard work are apparently paying off.

If size, willingness, and the desire to slap down anybody who puts his hand on the ball were the prerequisites to an outstanding defensive line, the Lion's would have an all-American combination. Should Engle continue to go along with the line he has been using in scrimmage sessions, State could field a defensive unit that would stand 6 feet, 1 1/2 inches, and weigh in at 204 pounds.

### Three Veterans

Len Shephard, John Podrasky, and Dick Cripps are the only members of the eight-man "line" with extensive varsity experience. Shephard, a six foot, 205-pounder, earned his letter as understudy to Fran Rogel last year, and was in the process of being converted to a quarterback when the coaches spotted his capabilities as a line backer.

Podrasky, like Shephard, is a made over back. He earned his monogram filling in for quarterback Chuck Drzenovich, but with the switch to the winged-T, the 200-pound Jessup Jolter was moved to center, where he has developed into a top-notch line backer.

One of a trio that anchors the middle of the line, the huge 6 foot, 1 inch, 225 pound Cripps has developed into an outstanding lineman since being equipped with a pair of contact lenses. The big Drexel Hill tackle had trouble seeing the ball last year, but played a great game against Pitt despite the handicap.

### Biggest on Line

The biggest man on the line is Stew Scheetz, who tips the scale at 235 and stands 6 feet, 2 inches. Scheetz may suffer from inexperience, but teamed with Cripps he gives the Lions one of the most formidable pair of tackles in the East.

Sandwiched in between Scheetz and 200-pound guard Don Milhouse is the lone sophomore on an otherwise all-junior octet.

On the flanks are posted Pat McPoland, 195-pound newcomer to Penn State football ranks, and Chuck Wilson, a member of last year's squad.

Joe Shumock, who teams with Shephard and Podrasky backing up the line, is the lightest man on the unit at 185 pounds.

### Wrestling Candidates

Candidates for varsity and freshmen wrestling teams and managerial positions will meet in 316 Sparks at 7:30 o'clock tonight.

Movies of last year's meets will be shown. All members of the Wrestling Club are invited to attend.

### Hole-in-One

Jim O'Hora, a member of the Penn State football coaching staff, has joined his former chief, Bob Higgins, in the college's hole-in-one club. Jim's ace came on the 170-yard No. 3 hole. Higgins holed his tee shot four years ago on the 159-yard No. 6 hole.

# A's Drop Yanks, Phils Lose 2

Both the New York Yankees and the Philadelphia Phillies blew chances to wrap up the 1950 baseball races yesterday.

The Yanks lost an 8 to 7 decision to the Philadelphia A's when Sam Chapman smacked a two run homer in the last of the ninth, and the Phils lost a double. The magic number for both the Phils and the Yanks is now header to the Giants, two games. Both can clinch their pennants today.

## 8 Greek Teams Open IM Season

A record touch football season will get under way tonight with the clash of eight fraternity teams.

At 7 p.m., Phi Delta Theta meets Lambda Chi Alpha; 7:45, Phi Kappa Tau faces Sigma Alpha Mu; 8:30, Phi Gamma Delta takes on Phi Kappa Psi; and at 9:15, Alpha Epsilon Pi clashes with Sigma Chi. The games will be played on Beaver practice field.

## CLASSIFIEDS

### LOST

BRAND NEW Army Officer's raincoat, size 42, outside 217 Willard Hall, Sept. 22. Call 2643.

LOST GOLD Woman's Corduroy raincoat. Taken from outside 303 Willard last Friday. Call Janet Friedman, 140 Simons.

HAVE YOUR black gabardine coat. You picked up mine Sunday at Theta suite. Call 6341 in town.

RAINCOAT TAKEN from Willard Hall outside Rm. 220 Fri. afternoon, glasses and cigarette lighter in pocket. Please return to Student Union. Need glasses.

F&E SLIDE RULE in or about Carnegie Hall auditorium Monday. Please call Dick Brewer 2376.

### FOR RENT

COMFORTABLE ROOMS with hot and cold running water. Faculty and graduate students. Central—quiet. Colonial Hotel, 123 W. Nittany Ave. State College. Phone 4850

TWO DOUBLE rooms for rent. Private bath. Call 6145.

OPENING FOR Student in moderate rate room for three with hot and cold running water. Phone 4850. Ask for Phil.

ROOM FOR married couple or graduate students. Laundry privileges. Call State College 3388.

### FOR SALE

OFFICER'S Regulation Green Blouse. Size 35R. Never worn. First \$10 or highest offer. 116 Hamilton Hall.

HOUSE TRAILER for sale, or will rent, on or before Friday including use of two-room annex and furnishings, city water, radiant heating, large lot with garden, etc. Come to Householder's Trailer at Pine Grove Mills.

K&E MINUSA Drawing Set No. 7951. Brand new. \$40.00 value for \$25.00. Dial 2879.

GLOBE SWIFT 125 H.P. Airplane. Fully equipped, all instruments, two-way radio, etc. Phone Bellefonte 33382.

1940 PLYMOUTH, excellent condition. \$440. Radio and heater. Bob Landesman, Hamilton Hall, 57. Call 5051 Ext. 1170.

WHIZZER MOTOR Bike, excellent condition, reasonable. Phone State College 2192.

TRAILERS. New—Used. Travelite, Overland, Smoker. Ark Trailer Sales, 2 1/2 miles west on 322. Student operated.

AMERICAN Encyclopedias practically new. \$250 original cost. Will sell for \$160 cash. Delaney, Hoover's Trailer Park 3595.

### WANTED

MUSICIANS WANTED for organized band playing all special arrangements. Call 2280.

STUDY DESK. Contact Bob Reed 4951 between 6 and 8 p.m.

HAVE A DATE? Need a car? Drive it yourself! Phone 7509.

PERSON WITH car to deliver the Daily Collegian. Late hours. Contact Tom Karolek, Daily Collegian Office.

REPLACEMENT FOR Nittany Dorms will pay \$25. Call Dorm 35 Room 11.

### MISCELLANEOUS

PILL'S MODEL SHOP is the complete model airplane and supply headquarters in town. 202 West Prospect—6:30-9:00 p.m.

We Feature . . .

## SPAGHETTI AND MEATBALLS

At its BEST Every Thursday and Monday

## CAMPUS RESTAURANT

ST. MARY'S HAS A WAY WITH WOOLENS . . . WOMEN . . . and YOU

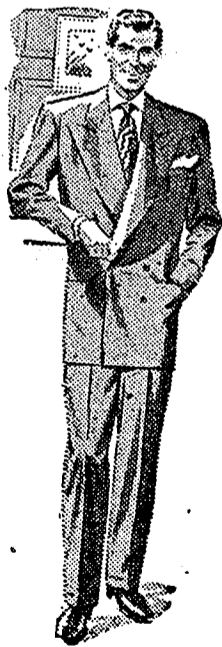
GRAND LITTLE GRANDSTANDERS" that show-off your flair for good fashions. ST MARY'S purest, prettiest "fuzzy-faced" 100 percent wool in The Long and The Short of the entire Fall Fashion Season.

(St. Mary's coats can be brushed clean and fluffy over and over again for season of joyous wear—we provide the brush)

mary leitzinger



## College Sportswear



Saxony BLACK DRESS TROUSERS

certified correct by "Esquire"

Trim Tailored for Mr. "T"

GABARDINES \$7.50 to \$17.95

## College Sportswear

State College's Friendly Store

## IN STATE COLLEGE FOR ARROW

young men's shop

127 S. Allen STATE COLLEGE

one man tells another

SUCCESS FORMULA . . . ON CAMPUS OR OFF!

## Arrow Gordon Oxfords

ARROW REPP TIES GG\*



Easy formula . . . that never misses! Button-down shirts are of crisp white oxford, Sanforized-labeled, of course. All silk, striped repp ties knot and drape to perfection. See them now at your favorite Arrow dealer's.

\* Good Grooming shirts \$3.95 ties \$2

## ARROW SHIRTS & TIES

UNDERWEAR • HANDKERCHIEFS • SPORTS SHIRTS

ARROW PRODUCTS — Exclusive at

Kalin's

130 S. Allen Street