

Extend Net, Golf Play Deadline

Entry deadlines for the Summer Session tennis and golf tournaments will be extended until tomorrow at 5 p.m. announced C. M. "Dutch" Sykes, recreation director.

The reason for the moveup of the date until tomorrow has been explained by Sykes as inclement weather not allowing participants enough practice time.

It is hoped that this extension will pave the way for many more entries in both tournaments. Soaked ground has necessitated the closing of the tennis courts for a good part of the Session.

Tennis divisions will include men's singles, women's singles and mixed doubles. Men's doubles or women's doubles will also be played if enough entries are received. Signups may be made at the tennis booth at the main gate of New Beaver Field.

Registration for the golf tournament may be made at the Caddy House.

Engle Seventh For Dougherty

Owen Dougherty, stocky Lion football captain, really believes in the "fall change-over" when it comes to grid coaches.

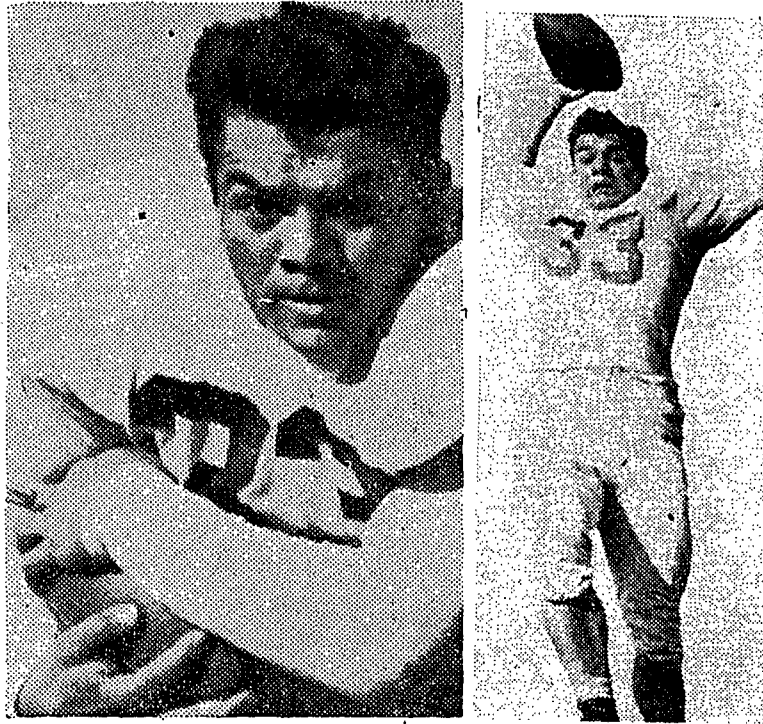
Owen has played under seven different coaches in his seven years of high school and college varsity football.

When he first broke in as a sophomore fullback at Dunmore, Pa. high school, Owen was under the watchful eye of Jim "Butch" Conway. In his junior year he found himself lugging the ball under the guidance of Tommy Silvano, a former Lion griddier. And in his senior year when he switched to halfback and won all-scholastic recognition, Owen's tutor was Jimmy Gatto.

Under the Penn State farm system, Owen spent his first college year at Mansfield State Teachers College where he was coached by Ed Casey.

When Owen arrived on campus in 1948 he played under Bob Higgins in the veteran coach's last active year. Keeping his record in tact, last year Owen broke into the starting lineup under

Contracting Troubles . . .



Franny Rogel

Rogel Huddles With Pitt Steelers; Seeks Pay Hike

By RAY KOEHLER

Will Penn State's 1949 grid attack, represented by one of the hardest-charging backs in the nation, be playing professional football or not during the 1950-'51 season?

That was the situation Francis Stephen Rogel found himself pondering over during the past weekend because of the National Football League's draft rule which says he must play with Pittsburgh. The two have been unable to agree on salary terms ever since the Steelers drew the ace Nittany Lion fullback at the league's annual winter conference.

During the week the picture brightened somewhat when the Steeler front office, which has been having financial problems of

its own, contacted the 205-pound line-cracker in State College where he is attending Summer Sessions. Rogel was asked to attend a weekend meeting in Pittsburgh in an attempt to iron out the difficulty. Prevented from confer-

(Continued on page six)

Frosh Football Back With 4-Game Card

Penn State will field a freshman football team in 1950 for the first time since 1941. Earl Bruce, formerly of Brownsville High School, and for the last four years head coach at California State Teachers College, will direct the plebes.

Four games are booked, all on the road. The frosh will open against Syracuse, Oct. 13, and games against Bucknell, Oct. 20; Navy, Nov. 4, and Pittsburgh, Nov. 24, will follow. This latter date will come on the day preceding the Pitt-Penn State varsity match at Pittsburgh.

Freshman football was forced out of the picture in 1942 by war, and was not reinstated thereafter because of the absence from the campus of freshmen. Four years ago Penn State inaugurated its "farm-out" plan under which all freshmen were assigned to State Teachers Colleges, Penn State centers and other cooperating institutions.

This fall, for the first time since the plan was inaugurated, a token class will be returned to the campus. The token class will represent less than one-third of the total freshman enrollment in 1950. At the same time, the Nittany Lion varsity football candidates, numbering from 60 to 70, will assemble for pre-season drills in mid-August.

Coach Rip Engle plans to bring back the quarterbacks and centers on or about August 15, and the others will follow a few days later. Practice will be in full swing August 21. Drills will be held twice daily prior to the opening game against Georgetown, Sept. 30.

Michigan State's 1950 football team will list a THROWER and a KETCHUM. Willie Thrower is a promising sophomore passer at halfback. Jim Ketchum is a student manager.

Michigan State's 1950 football team will list a THROWER and a KETCHUM. Willie Thrower is a promising sophomore passer at halfback. Jim Ketchum is a student manager.

Michigan State's 1950 football team will list a THROWER and a KETCHUM. Willie Thrower is a promising sophomore passer at halfback. Jim Ketchum is a student manager.

Get All Your
FISHING NEEDS
at
Max Hartwick SPORTSMAN'S SHACK
'round the corner from
The Skeller

LAST CALL FOR STATE INSPECTION!

The Present Inspection Period Ends July 31

IF YOUR CAR HAS NOT BEEN INSPECTED, PHONE 4991 AT ONCE!

CLEMSON MOTOR CO.

1101 NORTH ATHERTON STREET
STATE COLLEGE, PENNA.

HUR'S SUMMER CLEARANCE

THIS SALE STARTS THURSDAY, JULY 20, 9 A.M.

We will be closed all day Wednesday in preparation for this gigantic Clearance Sale

Famous Jacket

Manufacturers Close Out

were \$10.95 now \$6.95
were \$12.50 now \$7.50

We made a special purchase on These Jackets

Polo Shirts

Values up to \$2.95. Now

\$1.39

... at this price you can afford to be cool and comfortable.

Trousers

Tropical and Gabardines Crease Resistant All Colors

\$4.95

All other Trousers are reduced considerably

Our Entire Stock of

SUITS

were \$29.75	now \$24.50
were \$32.50	now \$26.50
were \$50.00	now \$41.50
were \$60.00	now \$47.50

Shirts

Were	Now
\$2.95	\$2.46
\$3.65	\$2.98
\$3.95	\$3.19

One Group of Belts

Values up to \$2.50

Now \$1.00

There Are Many More Items Reduced This Is a Store-wide Clearance



HUR'S MEN'S SHOP

Across From Old Main

114 E. College Ave

State College

FLYING THIS SUMMER ?



Make Your Reservations and Get Your Tickets From

STATE COLLEGE TRAVEL BUREAU

108 West College Ave.

"No Charge For Our Service"

SUMMER SHOE SALE



If you're hard to fit . . . we have just the right size for you. Select your Famous Brand Shoes at these low prices — in brown and white, navy, white.

Choose From These Famous Brands

- Florsheim \$3.99
- De Liso \$2.99
- I. Miller \$2.99
- Mademoiselle \$2.99
- Women's Hood Casuals \$1.49-\$2.59
- Men's Hood Casuals \$3.99
- Paramount \$1.99

Famous Brand Shoe Store

Across from the Post Office
Beaver Avenue