

Living Units Nominate Nine As May Queen Candidates

Nine senior women have been nominated by their living units as candidates for May Queen.

They are Leatrice Berger, Simmons; Arlene Connor, McElwain; Louise Drozdak, Co-op; Beverly Gearhart, Frazier; Teresa Gonsky, McElwain; Patricia High, Simmons; Lorraine Stotler, Grange; Victoria Williams, Simmons; and Marie Wroblewski, McElwain.

One of these girls will reign over May Day, Saturday, May 13. She and her court will be honored at the May Day dance Saturday night in Recreation Hall. Mary Conrath, junior senator, is in charge of the dance.

Elections Scheduled

Elections will be held in Old Main on April 17 and 19 for both May Queen and Maid-of-Honor. All women students are eligible to vote for both girls. The May Queen candidates were nominated by units having senior women; the Maid-of-Honor candidates will be nominated by units which have freshman women.

At the time of the elections, senior women may sign to participate in the Hemlock chain. The girls in the chain help to make it up.

Traditions Back

The appearance of freshman women on campus brings back other parts of the traditional May Day. There will be two May Poles this year: a freshman and a sophomore pole. The jesters and the heralds which are part of the ceremony will be freshman and sophomores, respectively this year. They are chosen by a special May Day committee. This committee also elects two sophomore attendants, two junior attendants, and the Honor Arch, made up of 20 senior honor women. The two runners-up for May Queen are the senior attendants.

Co-Edits

Delta Zeta

New initiates of Delta Zeta sorority are Mary Allan, Eugenia Piper; Nancy McClain, and Carolyn Barrett.

The sorority recently entertained the Pi Kappa Alpha fraternity with a square dance and scavenger hunt.

Theta Kappa Phi

Recently pledged to Theta Kappa Phi were John Albarano, Rudy Marazzo, Arthur McHugh, Thomas Shriver, Robert Sundias, and Bernard Whitehill.

New initiates of the fraternity are John Beites, Richard Chominski, James Doughtery, Alfred Friestak, James Hovanec, Raymond McGrellis, Frank Polomy and Leonard Wargo.

Delta Delta Delta

Janet Reed was installed as president of Delta Delta Delta on Wednesday night. Other new officers are Lois Jakob, vice-president; Lila Barnes, recording secretary; Cynthia Loessel, corresponding secretary; Lois Hartley, treasurer; Betsi Conway, chaplain; Pat Kready, marshal; and Joann Claycomb, social chairman.

Zeta Beta Tau

New officers of Zeta Beta Tau are Carl Liachowitz, president; Coleman Gainsburg, vice-president; George Kline, secretary; Larry Dunn, treasurer; and Bruce Bayuk, historian.

Zeta Tau Alpha

New initiates of Zeta Tau Alpha sorority recently held a tea in their sorority suite to honor recent initiates of all sororities at the College.

Phi Gamma Delta

Newly elected officers of Phi Gamma Delta are Robert Bunnell, president; Frank McKean, treasurer; Neil See, recording secretary; Allan Woolford, corresponding secretary; Jack Enterline, historian; Fred Rodgers, house manager; and Charles Rodgers, caterer.

SDCA

Tomorrow is the last day before Spring vacation for students to pick up their clothes at Student Dry Cleaning Agency stations.

Credit To Miss Allen For Big Strides In CA Work

Marjorie Allen's Penn State habitat is a small, rather cluttered office in the Christian-Association suite in Old Main. It's a busy place, for Marge is noted for her ability to get things done and her record here at State certainly bears this out. Since she came to the campus three semesters ago to work with the C.A., it has made great strides toward becoming the vital, active campus organization it should be, and Marge deserves much of the credit.

Marge's genial smile, as well as the rest of her person, is a product of the great state of Texas, for she was born and raised in Dallas. She stands at attention when Southern Methodist University's alma mater is played and, just to keep it in the same state, took her master's degree at the University of Texas.

English Teacher

Work on this degree was interrupted by the war, and the young student decided she should be doing something useful. The job she finally landed was that of English teacher in a small, rural high school noted for its laxness of discipline. Having had no previous preparation for teaching, Marge says the experience was a nightmare and she left after one semester firmly convinced that she was not born to teach.

Back to Texas U. she went to complete work on her master's degree. This left her summers free and the blond co-ed wasted no time putting them to good use. The summers of '45 and '46 found her on the staff at work camps in Ohio and later in Missouri. She is enthusiastic about these experiences and feels that there is no better way than this to learn to understand all kinds of people.

Relief Organizations

However, she said that the most wonderful summer she ever spent was in '47, when she went to Europe to work with the Friend's Service Committee in the rehabilitation projects in Germany and Belgium. Ever since this time she has been actively interested in war relief organizations.

The vivacious Miss Allen said that she loves sports but seldom gets time to participate in any. With the job of steering the Christian Association resting mainly on her shoulders, we can easily see why. Marge had her work cut out for her before she ever arrived and Penn State congratulates her on the difficult job which she is doing beautifully.

Alpha Chi Rho

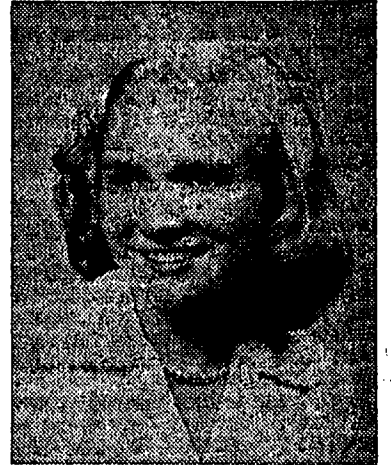
Recently initiated into Alpha Chi Rho fraternity were John Gehrett, George Gruber, Thomas Hanna, Donald Hazlett, William Hogg, Jr., Donald Kurtz, Joseph Lordeman, Richard Martz, George Phipps and Christopher Tonnelly.

Delta Zeta

New initiates of Delta Zeta sorority are Mary Allen, Carolyn Barrett, Nancy McClair and Eugenia Piper.

The sorority entertained the Pi Kappa Alpha fraternity with a square dance at the fraternity house on Sunday afternoon.

Old and New WRA Presidents



Shown to the left is Virginia Miller, past president of WRA, and to the right, Mary Ellen Grube, new president.

WRA Installs Grube President In Ceremony In White Hall

Mary Ellen Grube was installed as WRA president for the coming year at a ceremony held in White Hall on Wednesday evening. Miss Grube is familiar with WRA activities having previously served as publicity chairman and editor of the WRA handbook. A member of Chimes, she was assistant editor of Clapper, the Chimes national magazine. Her other activities include La Vie and Collegian.

Panhellenic Installs George President

Nancy George, Alpha Xi Delta sorority, was installed as new president of Pan-Hellenic Council at a meeting in McElwain Lounge Tuesday night.

Vice-president and future president Marilyn Levitt, was also installed by Dolores Jelacic, who has retired as president of the council. The new officers each received a red rose from the council.

Miss George is a junior in home economics and lives in Latrobe. Miss Levitt, a sophomore in liberal arts, is from Williamsport.

Mrs. H. C. Musser, new junior advisor of Pan-Hellenic, and Miss Kay Lang, new advisor of Junior Pan-Hellenic, were introduced to the group by Dolores Jelacic. Mrs. Musser will replace Mrs. Douglas Mead who retired from two years' service. Dolores Jelacic presented Mrs. Mead and Mrs. C. E. French, senior advisor for the coming year, with gifts in appreciation for their services.

The next meeting will be held in the Alpha Chi Omega suite at 8:00 p.m. April 11. All new representatives will be recorded at this meeting.

Miss Grube, a junior in secondary education, is from Bethlehem.

Also on the new WRA slate of officers are: Nancy Worthington, vice-president; Marilyn Williams, intramural chairman; and Janet Herd, assistant intramural chairman.

Ginny Miller, past president of WRA, presided at the installation.

Gamma Phi Beta

Officers of the Gamma Phi Beta pledge class are Betty Agnew, president; Lois Brown, vice-president; Lois Richardson, recording secretary; Nancy Geltz, corresponding secretary; and Barbara Denniston, treasurer.

Sigma Phi Epsilon was entertained by Gamma Phi Beta at a French party last evening in Grange rec room.

The Smartest Feet In The Easter Parade Will Be Wearing Shoes from Simon's

Simon's

The First National Bank Of State College

Member of

Federal Deposit Insurance Corporation
Federal Reserve System

- YES WE HAVE NO BUNNIES
- WE DRY CLEAN YOUR GARMENTS AT LOWEST PRICES
- HAVE YOUR WASHING DONE -9 lbs. for 35c
- EASTER IS CLOSER THAN YOU THINK!

LAUNDERETTE
SUPER SERVICE
210 W. COLLEGE AVE.
PHONE 4785 — PICK-UP SERVICE