

## Gamma Phi's Down KAT In Volleyball Intramurals

The second week of volley ball opened on Tuesday night with Gamma Phi Beta adding another win to its skein by downing Kappa Alpha Theta, 45-22, in a League I tilt. Really running wild in the second half, the Gamma Phi's piled up 23 points to the Theta's 9 with the aid of Ida May Brandt's 14 pointers.

It was slaughter in White Hall when Kappa Delta murdered Zeta Tau Alpha with 38 shots to 13. Mary Bowen stunned the ZTA's 17 times with her serve in this second League I game.

### Kappa Win

League I's Kappa Kappa Gamma walloped a fighting Delta Gamma team, 37-25. Ginny Miller and Joan Borland helped the Kappa's to gain their second win of the season by adding seven points apiece. The DG's rallied too late; in the second half, they equalled the Kappa's 13 points for the same period.

A peppy Chi Omega team came over from the red side of the scorebook, in their League I game, by chalking up a 47-12 win over a helpless Delta Delta Delta team. Copping high scoring honors of the season, Mary Horrigan racked up 20 points for the victorious Chi O's.

The Wednesday night bill, featuring League III and IV games, set out with Susanne Rauch at the helm for a strong McElwain team which had no trouble sailing over the Alpha Xi Delta eight, 50-12. Sue hooked 14 points; while her mate, Teresa Sheehan, caught another 13.

### Mac's Second Win

Ahead by only five points at half time, MacAllister picked up momentum in the second period, knocking over Alpha Omicron Pi, 52-30. It was Mac Hall's second win in the League III competition.

The high scoring Leonides left another victim in their wake by clawing the Phi Mu's 54-22. Helen Rusinko tied Chi O's Mary Horrigan with 20 points for the high scoring, individual honors of all the leagues. The outclassed Phi Mu's put up a valiant struggle.

League IV's Beta Sigma Omicron won by forfeit from twice-forfeiting Atherton I.

## Theta Sigma Phi Initiates Nine Women

Nine women were initiated recently by Theta Sigma Phi, women's national journalism honorary. Initiates are Bettina dePalma, Maxine Epstein, Norma Gleghorn, Ruth Johnson, Helene Krebs, Helen McNally, Laura Mermelstein, Loretta Stempinski, and Winifred Wyant.

Joy Stewart, who was graduated in February, was initiated at a previous ceremony.

## Marriages

### Christy—Hostetter

Miss Jane Craley Hostetter, Camp Hill, and William Christy, Philadelphia, were married Saturday at a wedding ceremony held in Harrisburg.

Miss Hostetter graduated from the College last June. She was a member of Kappa Kappa Gamma and was selected as a Belle in the 1949 LaVie.

Christy is a February '49 graduate of the College. He is a member of Beta Theta Phi and is now employed by the Pneumatic Tool Co. in South Bend, Ind., where the couple will make their home.

### Phi Sigma Kappa

Delta Gamma sorority was entertained by Phi Sigma Kappa at a dance held at the chapter house Sunday.

### Alpha Chi Rho

John Dittmar was recently elected president of Alpha Chi Rho fraternity. Other newly elected officers are Mark Carls, corresponding secretary; Clinton Beardsley, chapter secretary; and James Zeisloft, ritual officer.

Following the election four committee chairman were appointed. These were Fred Wiker, social; Clinton Beardsley, scholastic; Robb Holt, library; and Lloyd Warnaka, rushing.

Richard McDougall continues as vice-president; Alferd Darnach as treasurer; Robert Carney, chaplain; and James Dittmar, phi.

### Theta Phi Alpha

Theta Phi Alpha initiated Joan Graziano, Dorothy Horgan and Cornelia McCaffrey last Sunday morning.

### Sigma Pi

New initiates of Sigma Pi fraternity are John Amber, Fred Black, Robert Breisch, Florenz Fenton, Robert Gates, William Hoke, Robert Koons, Owen Landon, Donald Murray, James McFarland, Daniel Switch, Samuel Wayman, William Tegtmeyer, Charles Wenzel, William Griffith, and Robert Whittenberger.

Vance Scout and Fred Larsen were recently pledged by the fraternity.

Harry Isabel was elected to the office of vice president

### Delta Tau Delta

Newly elected officers of Delta Tau Delta are Robert Busch, president; Edward Donahue, vice-president; Richard Evans, treasurer; Gilbert Welsh, corresponding secretary; Quintin Toews, recording secretary; David Doebler, guide; Jack Trexler, sergeant-at-arms; and William Gourley, assistant treasurer.

Recently initiated into the fraternity were Edward Donahue, Phillip Ferris, Robert Freebairn, Joseph Giesey, William Gourley, Robert Johnson, Allen Liebau, Jack Trexler, Beecher Watson, William Webb and Walter Yah.

## Miami Triad Frats Compete for Queen

Sigma Chi, Phi Delta Theta and Beta Theta Pi fraternities will vie for the "Queen of the Miami Triad" on Holmes Field at 1:30 p.m. tomorrow.

This contest will be one of the highlights of the Miami Triad Weekend which includes a square dance held in the Beta house tonight, followed by a semi-formal dance tomorrow night.

These three fraternities, which were founded at Miami University, Oxford, Ohio, formed the alliance with the purpose of fostering better inter-fraternity relationships.

## Co-Edits

### Phi Sigma Kappa

Recently initiated into Phi Sigma Kappa were Gerald Dagher, Charles Fall, Hurley Graffius, Richard Herman, Donald Kump, Herbert Kump, Dave Richards, George Schenck and Frank Thompson.

The fraternity recently pledged Ned Stark.

### Alpha Zeta

New initiates of Alpha Zeta are John Bosch, Howard Davis, Clarence Fahnestock, John Gaut, John Hall, Glenn Haney, C. Eugene Harding, James Leamer, John McColl, Galen Motter and Stanley Walton.

John Clark, Earl Comfort, John Doppel, William Downs, William Haensly, Russel Kaniuka and Joseph Warzinski were pledged by the fraternity.

### Kappa Alpha Theta

Initiated into Kappa Alpha Theta on Sunday were Barbara Culley, Joan Dobson, Norma Lou Petty, Joyce Harkins, JoAnne Henry, Doris Jean Keller, Patricia Luckett, Judy Norton, Margaret Roberts, Sally Sechler, Sally Shoemaker, Barbara Wasaka, Joan Wiley and Marilyn Wilson.

Co-eds, Do You Get Campused When You Come In At 1:30 A. M.?

Don't Worry, Remember

# TIME IS A DREAM

at CENTER STAGE

Tickets at Old Main

90c — Friday  
\$1.25 — Saturday  
(Refreshments)

NOW!

At Your Warner Theatre

### Cathaum

DICK POWELL  
EVELYN KEYES

"MRS. MIKE"

### State

KIRK DOUGLAS  
DORIS DAY

"YOUNG MAN WITH A HORN"

### Nittany

Jeanne Crain  
Ethel Barrymore  
Ethel Waters

"Pinky"

# Nittany

Monday & Tuesday

Presented by the International Film Club

A Delightful Mystery Comedy from France

"ASSASSIN"

— Starring —  
HARRY BAUR

English Sub Titles

GIRL CRAZY

A Musical Comedy

by  
GEORGE GERSHWIN

MARCH  
23-24-25

7:30 p. m. Schwab  
Saturday Matinee  
2 p. m.



### Acacia

Harry Ankeny, Merlin Miller, Robert Miller, Ernest Skipper, D. Wayne Williams and Arthur Woodard were recently pledged by Acacia.

### Delta Chi

Gamma Phi Beta was entertained by Delta Chi Sunday afternoon at the chapter house. Laughs were provided by Peter "Lorre" Knapp and Bill "Houdini" Kuster. A light lunch and dancing completed the afternoon.

### Delta Delta Delta

Delta Delta Delta held a tea in the sorority suite on March 2 in honor of Miss Barbara White, national traveling secretary. Miss White visited with the local chapter from February 28 to March 4.

### Delta Gamma

Delta Gamma sorority entertained the Delta Upsilon fraternity Wednesday evening at the DU house. Skits were presented about each brother and a special feature was put on by the new DG pledges.

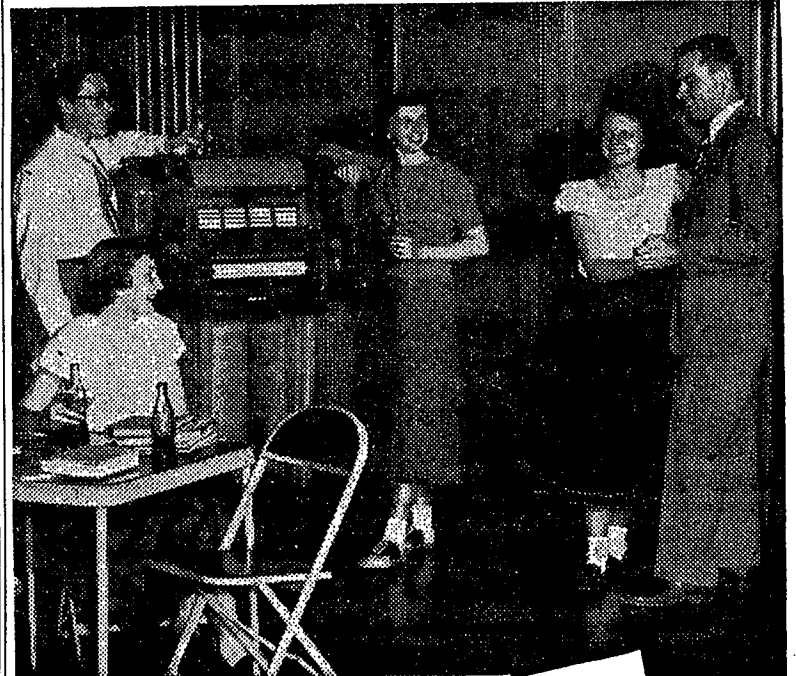
### Delta Chi

Delta Chi entertained Gamma Phi Beta at an informal party at their house Sunday afternoon.



LIFE WITH FATHER

Walter Winchell called it: 'Public Entertainment No. 1' March 16, 17, 18 — Schwab Tickets On Sale March 13 at Student Union Thurs. 60c Fri. & Sat. \$1.00 Tax Incl.



Grand Rapids Room University, Michigan (Ann Arbor)

The Michigan Daily



In Ann Arbor, the Grand Rapids Room on the campus is a favorite student gathering spot. In the Grand Rapids Room—Coca-Cola is the favorite drink. With the college crowd at the University of Michigan, as with every crowd—Coke belongs.

Ask for it either way... both trade-marks mean the same thing.

5¢ Plus 1¢ State Tax

BOTTLED UNDER AUTHORITY OF THE COCA-COLA COMPANY BY COCA-COLA BOTTLING COMPANY OF ALTOONA

© 1949, The Coca-Cola Company

CENTRE BEVERAGE CO., Inc.  
Rear 218 E. College Ave.

For PROMPT SERVICE — Phone 2462