

Second Semester Rushing Period Begins; Registration Held in Atherton Today

Registration for second semester rushing will be held in the Atherton lounge, SW, from 8 a.m. to 5 p.m. today and from 8 a.m. to 1:30 p.m. Monday, according to the revised Panhellenic rushing code.

Coeds eligible for rushing are those who have first secured a 1.00 all-College average or who are transfer students. At the time of registration a \$1 fee must be paid.

Open houses, the first rushing event of the season will be held from 2 to 5 p.m. tomorrow and from 2 to 5 p.m. and 6:30 to 9:30 p.m. Sunday. No personal invitations will be issued, but all women are urged to attend open houses in order to become acquainted with the girls in each house. A certain schedule, devised by the rushing committee of Panhel, must be followed in attending the open houses:

Sororities Divided

In order to help rushees make the best use of their time, sororities have been divided into three sections according to geographic

location. Section I includes Delta Gamma, Alpha Xi Delta, Delta Zeta, Alpha Gamma Delta and Zeta Tau Alpha. Section II includes Kappa Alpha Theta, Phi Mu, Kappa Kappa Gamma, Beta Sigma Omicron and Theta Phi Alpha. Alpha Omicron Pi Delta, Delta Delta, Kappa Delta, Chi Omega, Alpha Chi Omega, and Gamma Phi Beta comprise Section III.

Rushees are divided alphabetically and visit according to the

following arrangement:
Saturday, February 11, 2 to 5 p.m. Section I entertains rushees from A-H.
Section II entertains rushees from I to Q.
Section III entertains rushees from R to Z.
Sunday, February 12, 2 to 5 p.m. Section I, I-Q; Section II, R-Z; and Section III, A-H.
Sunday, February 12, 6:30 to 9:30 p.m. Section I, R-Z; Section II, A-H;

and Section III, I-Q.
Each rushee may stay no longer than 30 minutes at any one sorority nor re-visit the same sorority. However, those girls visiting the three Jewish sororities may spend one hour at each sorority and may visit each of the three sororities twice.

Contrary to previous rushing seasons when numerous silent periods were observed, only one strict silent period will be observed in this season's rush period. This will be between the last coffee hour and the night of ribboning. All other silent periods as scheduled in the Panhel rushing code will not be strict ones. The others will be observed in that neither sororities nor rushees may create situations, but that normal conversation may be held if a rushee and a sorority girl happen to be thrown together.

Following the open houses, registration will be held on Monday from 8 a.m. to 1:30 p.m. At 8 a.m. the same day sororities will

Women's Marine Reserve

Delores Hubbard, junior in Home Economics and former marine, asks all girls interested in forming a volunteer marine reserve group at the College to meet in the southwest lounge of Atherton Hall at 8 o'clock tonight.

turn in coke cards for Tuesday and Wednesday's rushing dates. Rushees may pick up these cards from 10 a.m. to 1 p.m. and are expected to return their answers from 1 p.m. to 4 p.m. Sororities pick up these answers at 5 p.m.

Rushing will continue throughout the first week as previously scheduled by Panhel. The second week will be marked by changes in the post office schedule when times have been changed to avoid the situation occurring last season when rushees were present at sorority affairs when they had already been cut.

At GONZAGA and Colleges

and Universities throughout

the country CHESTERFIELD is

the largest-selling cigarette.*

BING CROSBY

Famous Gonzaga alumnus, says:

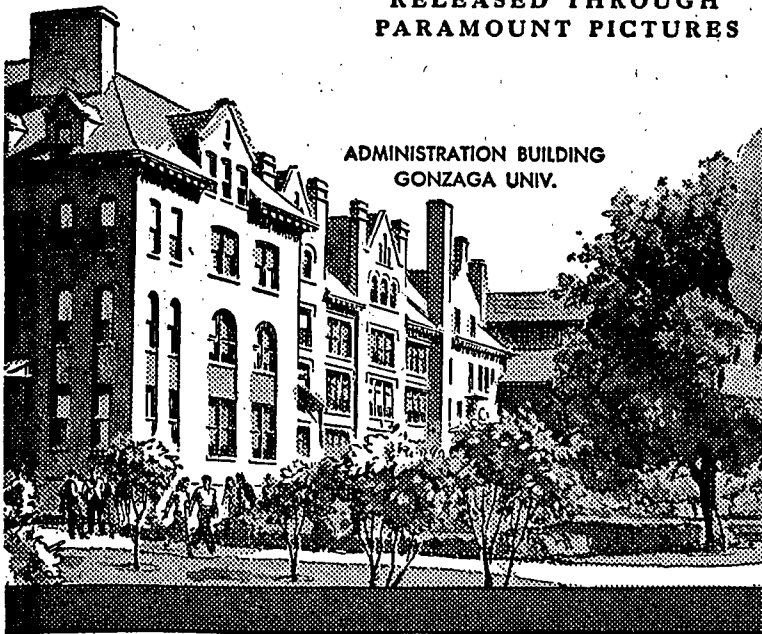
"Smoke MY cigarette.
MILDER Chesterfields."

Bing Crosby

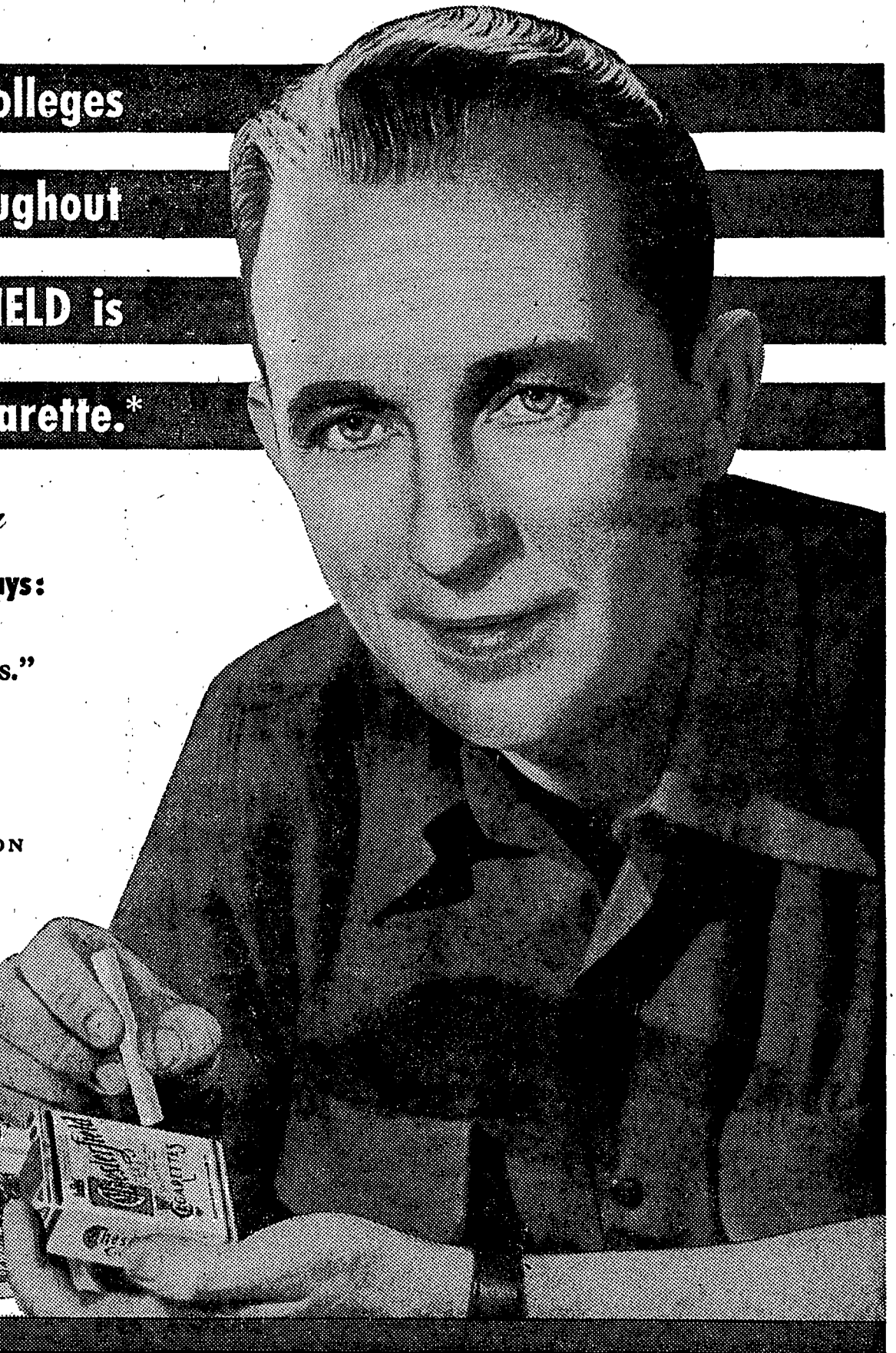
STARRING IN

"RIDING HIGH"

A FRANK CAPRA PRODUCTION
RELEASED THROUGH
PARAMOUNT PICTURES



ADMINISTRATION BUILDING
GONZAGA UNIV.



Always Buy CHESTERFIELD

They're MILDER! They're TOPS! - IN AMERICA'S COLLEGES
WITH THE TOP MEN IN SPORTS
WITH THE HOLLYWOOD STARS

*BY RECENT NATIONAL SURVEY

Hear CHESTERFIELD'S
Great New BING CROSBY
SHOW Every Wednesday
over the entire CBS Net-
work—9:30 P.M. E. S. T.—
8:30 P.M. C.S.T.—7:30 P.M.
M.S.T.—6:30 P.M. P.S.T.

Copyright 1950, LORETT & MYERS TOBACCO CO.