

Panhellenic Council Plans Rushing Get-Together

A rushing get-together between members of Panhel and freshman women was planned by the Panhellenic Council at its regular meeting Tuesday night, Delores Jelacic, president of Panhel, reported yesterday.

Planned for the purpose of explaining the rushing situation, the rushing code and sororities in general, the get-together has been scheduled for Saturday afternoon, January 7. A definite time and place has not yet been determined. The meeting will also serve as an opportunity for all freshman girls interested in rushing to pre-register.

Regular registration and the payment of the \$1 rushing fee will not be held until the date originally scheduled in the Panhellenic rushing code.

Express Thanks

At the meeting Miss Jelacic and members of the Council expressed their thanks to Carolyn DeHart and Florence Teresinski for their good work in planning and carrying out the Panhellenic pledge tea. Miss Jelacic also wished to thank all the sorority pledges who participated in the plans and who attended the tea.

A report was heard from the constitutional committee previously set up and the Council submitted suggestions as to the revision of the constitution. At the next meeting a permanent list of recommendations for revision will be passed out to all representatives and changes to the list will be made at the meeting. A period of two meetings will then be required to elapse before the suggestions may be voted upon.

IFC - Panhel Party

Susan Halpern, chairman from Panhel for the IFC - Panhel children's party, reported that the party will be held this Sunday from 2 to 4 p.m. Two representatives from each sorority are serving on the committee to help decorate and plan for the party.

On Saturday, the Council has made plans to send out gifts to county ward children.

A committee to consult with the administration on the problems of housing and telephones was appointed. Dorothy Werlinich heads the group whose other members are Adele Adler, Joyce Cotter, Delores Jelacic and Sarah Pate.

Guide Book

Co-editors for next year's Panhellenic Guide Book were named. Susan Halpern and Mary Ann Kreps will serve in this capacity, assisted by Mary Fox and Nancy George.

Sororities were reminded to turn in their \$15 checks for the IFC - Panhel Ball to Student Union. The next meeting of the Council will be held on Tuesday, January 9.

Gamma Phi's, AGD Continue Win Streak

Gamma Phi Beta and Alpha Gamma Delta in Leagues III and IV continued their winning streaks by defeating their opponents Tuesday night at White Hall.

Led by Jean Garretson, high scoring forward who accounted for their team score, Gamma Phi Beta downed Kappa Delta, 24-15. Previously Gamma Phi had defeated Kappa Delta, 20-9.

Alpha Gamma Delta smothered Delta Delta Delta, 35-13, repeating the victory of the first half of the series. M. J. Shreiner and Bess Kriner led the high scoring team to victory.

Losing last week to the powerful Gamma Phi sextet, McElwain A came back to defeat Kappa Kappa Gamma, 28-19, after falling victim to the losers in the first half of the schedule by a 28-22 score. The combination of Frohman, Lurcio and Sheehan proved too much for the Kappa team, whose Lois Kenyon took scoring honors.

With the score 19-16 at half in their favor, Chi Omega came through to down Kappa Alpha Theta, 26-33 to compensate for the 31-44 loss they had suffered in their first meeting. Rand, Ever and Doggett accounted for the winners' score.

Pi Lambda Phi

Pi Lambda Phi recently pledged Hal Greenberg and Warren Laneva.



Delores Jelacic

KKG, Atherton SW Lead IM Swimming

Kappa Kappa Gamma and Atherton SW are the leading contenders in the intramural swimming contest. Leading with 31 points the two teams are closely followed by the Co-op with 29, Atherton NE, 28, Atherton SE, 27 and Alpha Chi Omega with 26.

Chi Omega heads the second division with 25 points closely contending the leaders' positions. Simmons and Kappa Delta with 24 follow Kappa Alpha Theta having 21, and Leonides 17. Women's Building and Gamma Phi Beta complete the list with 16 points each.

The next intramural meet will be held tonight in White Hall.

Jan Herd, Ath SE, leads in times for the 50-yard crawl in 30.8 seconds, the 25-yard breast in 19.7 and the 25-yard back crawl in 17. Other individual placings are as follows:

50-Yard Crawl	
Lynn Guillet, Kappa Alpha	31.8
Theta	33.6
Joan Siesel, Simmons	34
Lois Evans, Atherton SW	35.2
Gerry Brown, Atherton NE	21.2
25-Yard Breast	
Joan Tyson, Co-op	22.8
Mary Lou Bower, Alpha Chi Omega	22.8
A. Siegel, Leonides	25
Lea Thompson, Kappa Kappa Gamma	17.5
25-Yard Back Crawl	
Barbara Benck, Atherton NE	18.5
Pat Veil, Alpha Chi Omega	18.8
Nancy Harris, Atherton SW	20.6
Sally Shapiro, Simmons	

Alpha Chi Sigma

Alpha Chi Sigma entertained Chi Omega last Sunday afternoon. The music of Jim Riley's orchestra provided entertainment.

Current Fashions Indicate Gifts

Men take heart, for as a Christmas shopper for that lucky girl you need only to take a look at current fashions to find the brightest kind of ideas for the feminine side of the gift list. At least the above is the contention of the Jewelry Industry Council.

This season's clothes depend importantly on accessories in general and jewelry in particular, the Council maintains. Short, bar-topped evening dresses need the added elegance of a brilliant necklace. Brief, caplike hairdos call for large or pendant earrings, and the slender simplicity of daytime clothes calls for the accessory touch of a golden bauble at the belt line or a beautiful clip high on the shoulder.

Interest of Earrings

According to the Jewelry Industry Council, earrings have an interest all their own. There are wonderful new chandeliers for evening and many of the evening and daytime earrings are designed with equal interest in both front and back, the pleasant idea being that when hair is very short, the back of a lady's ear gets almost as much attention as the front.

For the woman who likes to "do things" with her jewelry an ideal gift is one of the gleaming gold chain necklaces which come in several lengths and sizes. She will enjoy wearing it wound high around the neck as a choker, swinging low with her favorite gold brooch as a pendant, or looped around the wide leather belt of a wool sports dress.

Inexpensive Items

Among the beautiful yet not expensive items, which the frugal shopper may be searching for, the Council recommends compacts, wallets, pillboxes, cigarette cases and lighters, evening bags, novel key chains, charm bracelets, gold plated bangle bracelets, solid gold rings and silverware pieces for the girl who is adding to her sterling silver chest.

Judicial Chairman Issues Pre-Vacation Reminder

Following is a pre-vacation reminder of Judicial regulations as issued by Connie Croushore, chairman of Judicial Committee.

1. Sign out on a pink slip and send a post card to your parents two days before vacation. The penalty for not signing out for vacation is one lenient weekend.

2. Sign in on the pink slip upon returning from vacation. The penalty for not signing in is one black mark.

3. If you intend to use a one o'clock travelling permission, it must be indicated on the pink slip before you leave school.

4. If, for any reason, you are not returning to your dormitory by the hour stated on the pink slip, you must telephone or telegraph your hostess. If the hostess is not notified she will telephone your parents in an attempt to learn your whereabouts. In addition, the penalty for lateness will be inflicted.

5. Anyone returning to the dormitory after closing hours without notifying her hostess, even though she may have signed out to return the following day, is liable to a one o'clock removal.

Please check with your hostess if there are any points which are not clear. None of these rules have been changed; this is merely a reminder.

CLASSIFIEDS

LOST

WALLET LOST in locker room at Rec Hall Thursday. Finder call Bradrick 4923, or mail to SAE.

DIAMOND ENGAGEMENT ring in first floor Osmond Lab. Please call Anne, 6711 Ext. 3299-M or 3105.

TAKEN—Gray gaberdine overcoat from Sigma Nu Friday night. Label Harrison's Clothing Co. Call Dick Crippa, 3250.

ELGIN DELUX wristwatch with black band. Lost between Corner Room and Atherton Hall Dec. 13. Reward. Call 246 Atherton.

FOR SALE

LIKE NEW hockey men's skates. Size 12. Call Kline 4703.

1941 25' SUPIOR House Trailer. Bottle gas stove, sleeps four. Many extras. (Continued on page eight)

SANTA SAYS:

TREAT YOURSELF TO A REAL TREAT WITH DELICIOUS, COLORFUL CHRISTMAS COOKIES

—from—

ELECTRIC BAKERY

243 S. ALLEN ST.



The SILVER and GOLD

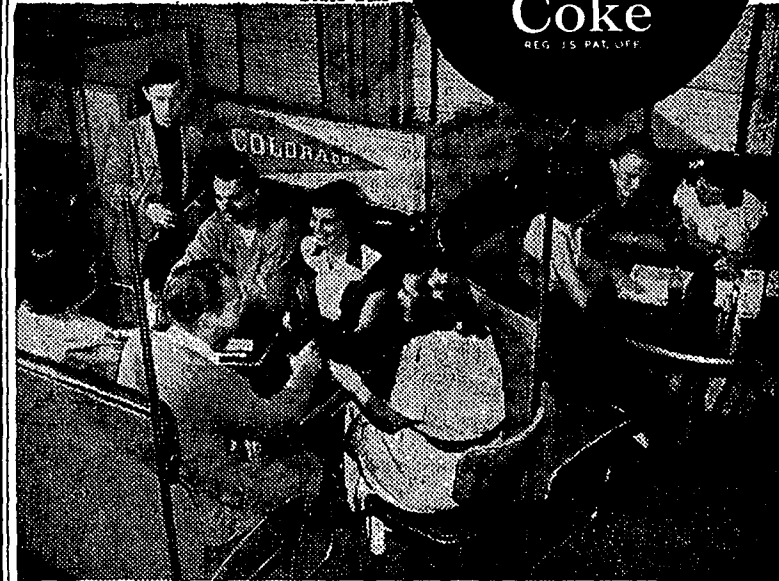
AN INDEPENDENT NEWSPAPER
Official Publication of the Associated Students of the University of Colorado
500 South Tenth Street, Denver, Colorado, U.S.A. Telephone 3-1111

Here We Go Again... Editors, Business Managers Selected For

Meeting the gang to discuss a quiz—a date with the campus queen—or just killing time between classes—Owen's Sandwich Shop at the University of Colorado in Boulder is one of the favorite places for a rendezvous. At the Owen's Sandwich Shop, as in college off-campus haunts everywhere, a frosty bottle of Coca-Cola is always on hand for the pause that refreshes—Coke belongs.

Ask for it either way... both trade-marks mean the same thing.

5¢ Plus 1¢ State Tax



Owen's Sandwich Shop, Boulder, Col. BOTTLED UNDER AUTHORITY OF THE COCA-COLA COMPANY BY Cocoa-Cola Bottling Co., of Altoona

© 1949, The Coca-Cola Company

CENTRE BEVERAGE CO., Inc.

Rear 218 E. College Ave.

For PROMPT SERVICE - Phone 2462



THE COLLEGE BOOK STORE and CHRISTMAS

Everything you need under one roof; "The Biggest Smallest Store in Town."

The College Book Store

129 W. Beaver Ave.

Open Every Evening

