

Panhellenic Council Plans Sorority Pledge Tea

Panhellenic Council will hold a pledge tea in McElwain lounge from 2:30 to 4:30 p.m. on Saturday, December 11.

A similar tea was sponsored last year by Panhel in order to eliminate the large number of pledge teas held individually by each sorority pledge class and this year's tea will be a continuation of the same policy. A further purpose of the tea is to acquaint as many pledges of different sororities with as many other pledge groups as possible.

Dr. Weston, dean of women, Miss Ella Mae Jackson, assistant to the dean of women, Mrs. Cyrus French, advisor to Panhel, and Mrs. Douglass S. Mead, also an advisor to the group, will be guests at the affair. In addition to of Panhellenic Council are invited to attend.

Pledge Committee

The committee in charge of the tea is made up of pledge representatives from each sorority and is headed by Panhel member, Carolyn DeHart. Members of the committee and the sorority which each represents are Marybert Kinkead, Alpha Chi Omega; Joan Fromm, Alpha Epsilon Phi; Evelyn Marasovich, Alpha Gamma Delta; B. J. Webber, Alpha Omicron Pi; Theo Isenberg, Alpha Xi Delta; Helen Wray, Beta Sigma Omicron; Ann Morgan, Chi Omega.

Martha Schwing, Delta Delta Delta; Jane Stieber, Delta Gamma; Nancy Walker, Delta Zeta; Bryne Tetley, Gamma Phi Beta; Judy Norton, Kappa Alpha Theta; Marian Harmsen, Kappa Delta; Patricia Dennis, Kappa Kappa Gamma; Mary Jane Woodrow, Phi Mu; Natalie Frankel, Phi Sigma Sigma; Marilyn Levitt, Sigma Delta Tau; and Ruth Schwerha, Theta Phi Alpha.

Ath SWI Scores Reversal Victory

As the second half of WRA basketball began, one reversal of previous winners occurred.

The upset was in a closely fought battle between SW I and SW II. SW II rallied in the second half, but it was not enough as the team went down 22 to 20. Pat Frank starred for the winners by tallying 12 points.

In the second encounter of SE I and SE II evidence of a higher-

Four Teams Emerge As Leaders in WRA Table Tennis

Completion of the third week of WRA table tennis finds four teams in close competition for high scoring honors.

Delta Zeta, Leonides, Philotes and Alpha Gamma Delta are all out in front with no higher than two losses so far for the season. Delta Zeta leads with a record of nine wins and no losses, although all of these victories have been by forfeit.

Leonides boasts a record of eight wins and only one defeat, while Philotes and Alpha Gamma Delta are next, each with seven wins and two losses.

Next highest scorers are Spruce, Simmons, Phi Sigma Sigma, Alpha Epsilon Phi and Kappa Alpha Theta who all have six victories and three defeats.

Delta Delta Delta, Beta Sigma Omicron, Alpha Chi Omega and Alpha Omicron Pi have five wins and four losses chalked up, while McElwain and Co-op have only tallied four victories.

MacAllister, Hemlock, Phi Mu and Alpha Xi Delta so far have scored a meager three wins to six defeats. Chi Omega has one win and eight losses.

Oak, Woman's, Zeta Tau Alpha and Atherton II are all lagging in competition with no victories up to this time.

scoring game was shown. SE I which had previously eeked out a 5 to 4 win trounced SE II 26 to 9 this time. They are the only unbeaten squad of the Atherton freshman girls.

NW I received a victory by forfeit from NW II. They had downed NW I by a 26 to 10 score before.

NE II also forfeited to NE I. NE I in the first meeting defeated NE II 23 to 13.

Co-Edits

Sigma Delta Tau

Sigma Delta Tau sorority entertained its pledges at a party held in the PSCA cabin on Sunday, December 4.

Kappa Delta

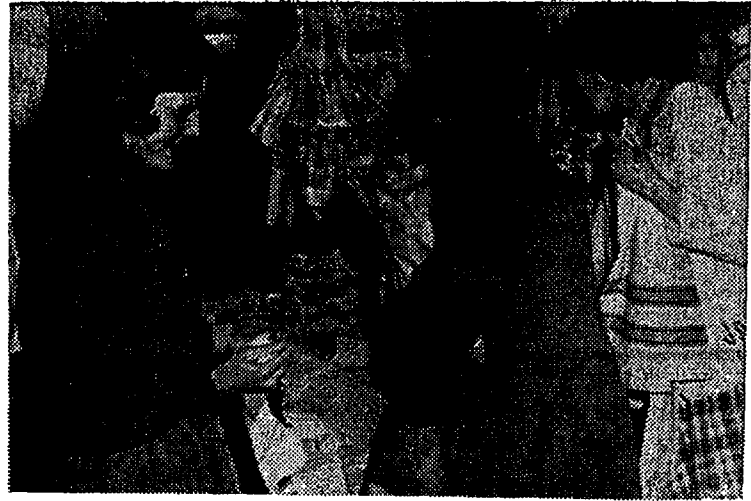
Kappa Delta sorority pledged Margaret King and Dorothy Noll at a meeting held Monday night.

Delta Delta Delta

Delta Delta Delta pledged Mary Bambrick last Monday evening.

Delta Gamma Pledges

Sandra Sanders and Patricia Vester were elected president and vice-president respectively of the Delta Gamma Pledge class.



FOR CHARITY—Eve Lott of Kappa Alpha Theta is shown above at the sorority's annual charity bazaar in the Corner Room last Saturday afternoon. Knit goods, hand-painted items, crafts and baby wear were sold. All proceeds go to the Institute of Logopedics in Wichita, Kansas.



DOWN BY PATULLO—JEWELS BY CARTIER.

CLASSIFIEDS

LOST

WHOEVER picked up Business Law and Auditing textbooks, please return to Student Union. Urgently needed—for exams.

SOMEONE picked up my pea coat at Campus Grill Monday. I have yours. Call Lobron 2941.

P&E SLIDERULE—in Osmond Friday noon. Finder call 3079 or leave at Student Union. Reward.

LONGINE WATCH—near Engineering buildings Friday morning, Dec. 2. Call R. Whitehill 5051. Reward.

ONE RONSON lighter in vicinity of Temporary Bldg. Please call Bill at 6649. Initials W.A.H.

LOST — TIE CLASP with Joseph written out. Please call Joe Reinheimer, 6989. REWARD.

BLACK RONSON lighter with initials. Between Pollock Circle and Eng. C. Please call 5051-270, Rm. 22.

FOR SALE

1948 PLYMOUTH four-door blue sedan, excellent condition. Reasonable price. Must sell soon. Call 7181 or 6881.

WANT TO BUY a diamond ring, yellow gold in platinum? Value \$165. Best offer, call 3267 between 12:15 - 1:15.

USED RCA table model combination. Original price \$99.50. Selling for less than half. Also classical and popular records, cheap. 281 Simmons.

1941 CHRYSLER ROYAL 4-door sedan, good motor, radio and heater. Price \$275. Call State College 6323.

TUXEDO—Size 38. Call 4125.

FOR YOUR OWN CHRISTMAS! Fine 7-foot skis, nearly new. Binders, poles. Reasonable. Phone Cook, Campus 210-J.

20-Gauge 1-shot, bolt action "shotgun" and .25 automatic, both with ammunition—\$55. Call 4388.

ONE BLUE SUIT and one brown tweed suit. Both size 38. Call Hetrich, 4862.

LEICA CAMERA—Latest model—never used—Elmar lens 1-3.5—priced considerably below cost. Call 4118.

FOR SALE — GE Leader Stove, GE 8 cu. ft. refrigerator. Excellent condition. Sell separately or together. "Dick" 6711 Extension 293-4, Tues., Thurs., Saturday, 9-5.

1946-25' HOUSETRAILER bottled gas stove, venetian blinds, shed; sleeps four. Many extras. Reasonably priced, 373 Windcrest.

ONE PAIR SKIS with bindings and poles, 7-foot, \$15.00; one Schwinn touring bicycle \$17.00. Inquire at 501 South Allen, 7-9 p.m. Ask for Janzen.

1932 DODGE 4-door Sedan \$50. Call 4618 after five o'clock.

COEDS — Why be frustrated? Mistletoe over the door does the impossible. A card before Dec. 10th delivers yours. Sprigs four bits. MEN—Mistletoe corsages. A card to box 249 Irvin Hall tells all. One buck.

TWO SUITS and one sport coat, sizes 42 — Call Matty, 4975.

FOR RENT

FURNISHED APARTMENT for rent — 3 miles out of town. Also double room with kitchen privileges. Call Glenn Miller, State College 2280 after 5:00 p.m.

WANTED

TWO STUDENTS to share apartment at Lemont. Cooking facilities. \$15 per month. Call 4188 after 6 p.m.

RIDERS TO Alabama around December 19. If interested, call 6864. Round trip could be arranged.

GIRL TO SHARE furnished apartment. Phone 6170.

A RIDE someplace in vicinity of Iowa for myself, wife and two-year son. Yockey, 308 Frear.

ANY STUDENTS staying in State College during Christmas holidays who wish to earn up to \$1.35 per hour just during the vacation, see Perry at the Dux Club in person. Don't phone, 128 S. Pugh Street.

MISCELLANEOUS

IT ISN'T NECESSARY to send your typewriter out of town for repair. Just dial 2462 or bring machine to 683 West College Ave.

FRATERNITIES, SORORITIES! — To make your parties and teas a big success, order your punch, cookies, hors d'oeuvres from Frida Stern, 122 Irvin Ave, phone 4818, State College.

ATTENTION ALL EDINBORO Men 1946-1947 semesters annual reunion at Theta Kappa Phi Wednesday, Dec. 7, at 8:00 p.m.

WITH SMOKERS WHO KNOW... IT'S

Camels for Mildness!

Yes, Camels are SO MILD that in a coast-to-coast test of hundreds of men and women who smoked Camels—and only Camels—for 30 consecutive days, noted throat specialists, making weekly examinations, reported

NOT ONE SINGLE CASE OF THROAT IRRITATION due to smoking CAMELS!

