

Women Participate In Field Hockey

Approximately fifty women have participated thus far in WRA field hockey, played on Holmes Field at 4 p.m. Monday through Thursday, of each week.

Most girls taking part are freshmen and sophomores and over half the girls who turned out for hockey are from the Philadelphia vicinity where field hockey is a popular women's sport.

Women students desiring to attend the scrimmages are invited to do so.

Girls now participating are Charlotte Maas, Frances Nichols, Betty Spencer, Jacqueline Schoch, Martha Baltzell, Sally Greenberger, Nancy Hanna, Mary Lou Transue, Virginia Mayes, Charlotte McIntire, Louise Shepherd, Irene Jeffress, Louise Waltz, Molly Mallard.

Peggy Longwell, Polly Heidenbrand, Wilma Huss, Johanne Connell, Nancy Jarden, Nancy Patterson, Patricia Nolan, Elizabeth Green, Peggy Lamaster, Barbara Wynn, Pat Pirrall, Ruth McSparran, Sue Knapp, Janice Berg, Patricia Frank, Lucy Ann Tompkins, Sara McMillan, Peg Mayberry, Mabel Marple, Jan Herd, and Sally Johnson.

CLASSIFIEDS

FOR SALE

FOR SALE: All Aluminum Spartan Trailercoach. Excellent condition, see Jerry Byrem after 6 o'clock, Hoover's Trailer Park.

1932 DODGE 4-door sedan. Good condition. Call 4618 after 5 o'clock.

BIKES, MEN AND LADIES. Each 26 inch wheel and in good condition. Phone State College 2856.

MERCURY CONVERTIBLE, 1946, for lights, radio, heater, back-up light, and spot light. \$1095. Call Dave, 2025 Bellefonte.

1941 CHRYSLER ROYAL (6-cylinder) sedan. Motorola radio-heater. Fair shape. Call 6328.

1947 RED CROSLY sedan. Excellent condition. 35-40 miles per gallon. \$485. Can be seen rear of Phi Delta Theta daily. Call 2221 in evenings.

COOK'S LUNCHEON SPECIAL TODAY

Individual Chicken Pot Pie
SALAD
ROLL
COFFEE

65c

1940 CHEVROLET 2-door sedan. A-1 condition. B-title. Any reasonable offer considered. Irvin Hall. Room 212. See Bill.

1940 BUICK 4-door sedan. Very clean. Apply to Breisch, Sigma-Pi. Phone 4928.

FOR SALE. 1948 Chrysler convertible coupe. Like new. Can be seen at Jack's Service Station.

7-WAY FLOOR LAMP, used two years. Good condition. \$5.00. 1026 South Atherton. Phone 2647.

FOR RENT

FOR RENT. TRAILER, 27 foot Sun. Excellent condition. Ideal for family of three. Located at Hoovers, call 2634.

LOST

LOST BLUE WALLET containing meal ticket, room key in Corner Room Thursday. Finder please return to Collegian office.

BROWN Shaeffer fountain pen in EE. Tuesday. Finder call George Himes, 6786.

TRENCH COAT. Name on label McMennin. Taken by mistake Friday at second floor Sparks. Return to Sparks custodian. Yours in there.

ONE CLASS RING inscribed New Cumberland. Call John Beiter, phone 6311.

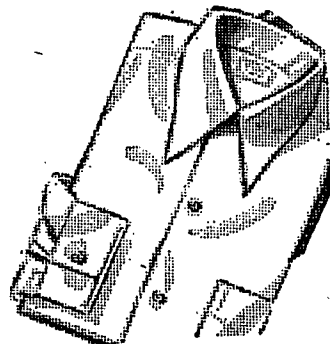
REWARD OFFERED for return of Senior A-A Book. Andrew Buchanan, Alpha Gamma Rho. Phone 3181.

HISTORY BOOK, for History 20, and Psych 2, book lost. If found, please return to Student Union. Name—George Chobany.

LOST ONE brown wallet Thursday. Contains important cards. Reward, call Bob Rose 3250.

PAIR OF GLASSES in blue case. Lost at B.C. football game. Finder contact Student Union. Reward.

MAN'S Self-Winding wristwatch between 100-500 West College Ave. or 200 South Atherton street. Finder please phone 2708.



WEEKEND SPECIAL THE WHITE SHIRT

Drew Pearson has told the nation about—The famous Adam white shirt—Fused collar—Barrel cuff. Sizes 14-17, assorted sleeve lengths, high quality broadcloth — \$2.65 ea. or 2 for \$5.00.

2 for \$5.00
YOUNG MEN'S SHOP
127 S. Allen St.

LOG LOG slide rule. Name engraved on rule. Edwin Nye. Reward. Phone College Ext. 167J.

SUEDE JACKET, somewhere on campus, will finder please return to Jo Breisch, Sigma-Pi. Phone 4928.

WILL THE person who took the Navy Blue coat at the Neuman Club meeting call room 14 Simmons. I have your coat.

LOST RED WALLET containing meal ticket near Pollock dorms Tuesday. Hungry. Finder please return to 244 McElwain.

WANTED

STUDENTS FOR SALESWORK in your spare time. Average commission—\$2.00 per hour. Inquire Jay Jones 2760.

MISCELLANEOUS

IT ISN'T NECESSARY to send your typewriter out of town for repair. Just dial 2492 or bring machine to 633 West College Ave.

CAR OWNERS ATTENTION. Join AAA now, only \$6.00 for first year. State College Hotel, Room 205, phone 4906.

TYPING AND MIMEOGRAPHING done reasonable. Secretarial Service, State College Hotel, Room 205, phone 4906.

GIRLS! EARN MONEY with music! All girls interested in joining an all-girl dance orchestra are urged to contact Ruth Beatty, 335 Atherton, or "Willy" Williams, 2954 by October 15.

SANDWICHES, ICE CREAM, milk, chocolate milk, etc., can be had at Dorm 20 and the PUB starting at 8 p.m. Sunday through Thursday.

GUNS FOR RENT; used guns for sale; ammo, caps and hunting equipment. At Max Hartwick's Sportmen's Shack. Around the corner from the Skellar.

HARRY'S-RENT-A-BIKE—400 E. College Ave. Phone 4200. 25 cents per hour. Special day rates.

DANCE PROGRAMS
Invitations • Form Letters
Commercial Printing
Inc.
Glennland Bldg., State College

WOODRING'S FLORAL GARDENS



THIS WEEK'S FLOWER SPECIAL
LONG STEM ROSES... 99c doz.
ORCHID CORSAGES \$1.50 ea.

JAMES E. WOLFE '39 Mgr.
117 E. Beaver Phone 2045



DOWN BY ATHENA—JEWELS BY GERSHORN.

IMPORTANT ANNOUNCEMENT

SENIORS IN THE School of Education

You must have your

1950 LaVie

Picture taken at the

PENN STATE PHOTO SHOP

From Oct. 14 to Oct. 19

No Exceptions Made

WITH SMOKERS WHO KNOW...IT'S

Camels for Mildness!

Yes, Camels are SO MILD that in a coast-to-coast test of hundreds of men and women who smoked Camels — and only Camels — for 30 consecutive days, noted throat specialists, making weekly examinations, reported

NOT ONE SINGLE CASE OF THROAT IRRITATION DUE TO SMOKING CAMELS!

