

AIM, Penn State Club Open Doors to Independent Men

Never before in the history of the College have independent men, those not affiliated with any fraternity, had such an opportunity to express themselves both politically and socially.

To insure just representation on All-College Cabinet, the highest student governmental organization on campus, independents last year banded themselves together into an Association of Independent Men (AIM).

AIM functions through an elected council of 76 men, approximately one representative for every 55 students.

Resembles IFC

This council, similar in many ways to the Interfraternity Council which represents fraternity men, elects a five-man executive committee composed of a president, town vice-president (elected by students living off campus), vice-president (elected by students living in dormitories on campus), treasurer, and secretary.

The president of AIM takes his seat on All-College Cabinet as representative of all independent

men. AIM, which is not yet one year old, is one of the successors to the now-defunct Independent Student Council. Under the old organization one representative elected by the council sat on All-College Cabinet as spokesman for all independent students, men and women.

Members of the AIM council are elected by wards in town, and by dormitories on campus. Every independent man is located in either a ward or dormitory and is entitled to cast his vote for council representative.

Penn State Club

The Penn State Club assumes a role in the independent student's social world paralleling AIM's role in campus government.

Founded in 1935, PSC sponsors hikes, picnics, and dances, as well as joint activities with Philotes, independent women's organization.

In addition to these planned get-togethers for members only, each year the club sponsors an All-College Talent Show in Schwab auditorium with cash prizes for the winners, and names the Independent Man of the Year. Last year's winner was All-College President William Lawless.

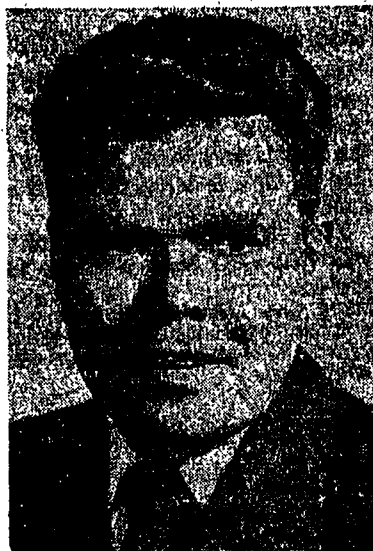
Intramurals

The PSC is also active in intramural sports, entering teams or individuals in the great majority of events listed on the sports card.

Membership is open to all independent men who wish to join. They may do so by signing up in the club room, 321 Old Main, on dates to be announced in subsequent issues of The Daily Collegian. There is a small initiation fee and a similar monthly fee.

College Publications

Band Director



James W. Dunlop

Blue Band Holds Tryouts

The Blue Band, which has provided the music for the College's football games for 50 years, is holding try-outs for new members this week. Men students interested in joining the marching band are asked to appear for try-outs at any of the following times: Wednesday, Sept. 21; Thursday, Sept. 22; Friday, Sept. 23; Monday, Sept. 26; and Tuesday, Sept. 27. Report to Mr. James W. Dunlop. (Continued on page 22)

Eight Campus Publications Offer Opportunities for Aspiring Writers

Aspiring writers on the Penn State campus are assured of opportunities to express their literary spirit, whether it be in the field of newswriting, humor, science, or serious fiction.

Eight publications, ranging from the laughter-provoking Froth, College humor magazine, to the Penn State Engineer, organ of the School of Engineering, are open to interested students.

For would-be Peglers and William Allen White's. The Daily Collegian, daily campus newspaper, is probably one of the best stepping-stones to journalistic prowess.

The Collegian is published five days a week, Tuesday through Saturday inclusive. Normally four four-page issues and two eight-pagers constitute the weekly output.

Collegian

Admittance to the staff is gained by attending candidate meetings, dates of which will be announced in later issues of the Collegian. Promotion is on the basis of merit, with interest and journalistic ability being the prime requisites. Promotion to senior board, which conducts the operation and output of the paper, carries with it monetary remuneration.

Froth, the College's lone humor magazine, specializes in humorous fiction, jokes, cartoons, and photographs. Its inner workings are similar to those of the Daily Collegian, with candidates, a sophomore, junior, and senior board making up the staff.

Promotions are handled in much the same way as those on the daily newspaper, and on Froth, too; election to senior board brings with it the promise of fiscal income.

Six issues of the magazine are published during the school year, each issue ranging in size from 24 to more than 40 pages.

Engineer

The Penn State Engineer, one of the highest-rated collegiate engineering magazines in the nation, is published monthly by students of the School of Engineering. In contrast to the Daily Collegian and Froth, which are open to students from any schools of the College, places on the staff of the Engineer are open only to students registered in the School of Engineering. Promotion is obtained in the same way as on the other two publications, but none of the positions, including that of editor, brings with it pay for the job.

For the benefit of incoming freshmen and sophomores, each year a Student Handbook is published. Copies of this year's handbook are now available in the offices of the Penn State Christian Association, 301 Old Main.

Calls for candidates for next year's handbook staff will be made about the middle of this, the Fall semester. The retiring staff chooses the members who will edit next year's issue. There are no paid positions on the Student Handbook staff.

IFC Newsletter

The Interfraternity Council is represented in the list of College publications by its own paper, the IFC Newsletter.

The Newsletter is published bi-weekly and is sent, free, to each of the fraternities represented in the IFC. Only fraternity men are eligible to work on the Newsletter staff. The positions of editor, managing editor, and news editor are paid for out of funds allotted by the Council.

Critique is the College's answer to students interested in writing serious literary fiction. Unlike Froth, Critique aims not for the humorous, but to develop budding writers of artistic ability.

Critique is operated on the same principle as Froth, with promotions and monetary returns almost identical.

Who's Who

Who's Who in the News at Penn State is a booklet published once a year by the members of Sigma Delta Chi, professional journalism honorary, and contains information about those students the selection committee feels worthy to be honored for outstanding extra-curricular activities and service to the College.

Students to be honored are notified by letter. The editor is

always a member of Sigma Delta Chi.

Newest of College publications is the Penn State Farmer, organ of the School of Agriculture. The Farmer, whose first issue will appear this Fall, is a magazine similar in many ways to its sister publication, The Penn State Engineer.

New Publication

Plans are underway now to publish six issues in this, its maiden year of publication. It will contain technical articles about agriculture and lighter material about life on Ag Hill.

Newcomers who are interested in joining the staff may apply at any time to the editorial offices. Remuneration to senior members of the publication board has not yet been decided.

The Farmer succeeds the Ag Hill Breeze, former School of Agriculture newspaper, which ceased publication last year.

New Division To Aid Students Of .50 Average

Students who completed their freshman year with an average of less than .50 are this year being aided through the new Division of Intermediate Registration, under direction of Dean of Men H. K. Wilson. Previously they were dropped from the College.

Approximately 350 sophomores are now enrolled in the Division, which grew out of a meeting of the Executive Committee of the Board of Trustees in April 1949.

Students Tested

When a student is admitted to the Division, he is given a battery of tests, including college aptitude, personality, vocational interest, study habits, and speed of reading. In some cases, additional tests may be used, explained W. Scott Gehman, Jr., assistant to Dean Wilson.

On the basis of test results, the student's past record, information provided on questionnaires and interviews, a program for council and guidance is planned. A change in curriculum may be advised, or in the case where tests show the student has poor study habits or other correctible deficiencies, remedial action is taken.

Predict Average

The tests, devised at the College, permit guidance men to inform a student with a high degree of accuracy as to his probable semester average in a given field, according to Dean Wilson.

Students in the Division will be required to complete at least one semester of work there, but will not be allowed to remain for more than two semesters. If during the two semesters they do not prove themselves qualified to enroll in one of the 56 curricula, they will be dropped from the College.

Late AP News

Indict Robeson Rioters

NEW YORK—Six persons have been indicted in connection with the riot at the Paul Robeson concert in Peekskill early this month. One is Joseph Lillis, son of the Peekskill police chief, who is accused of throwing a rock through a car window.

To Speed Farm Issue

WASHINGTON—Administration forces in the Senate Democratic Policy Committee are speeding things up to get the farm issue up for debate by Monday.

For
LUNCH
It's
FRED'S
RESTAURANT

ATTENTION!
FRATERNITIES - HOTELS
CHURCHES - RESTAURANTS
INSTITUTIONS

HERE'S WHAT YOU'VE BEEN WAITING FOR!

WEISS BROS.

Harrisburg, Pa.

One of Pennsylvania's Outstanding Equipment Houses Brings You an

Exhibition of Kitchen & Dining Room Equipment & Supplies

IT'S BIG - IT'S WORTHWHILE - IT'S FOR YOU!

... And It's Right On Your Own Doorstep

→ **State College, Pa.**

→ **112 East College Ave.**

→ **Sept. 21 - 22 - 23 - 24**

Hours 1 P.M. to 9 P.M. Saturday 9 A.M. to 2 P.M.

You'll see Hobart Dishwashers, Mixers, Peelers (in actual operation) Garland Ranges - Pitco Frialators - Sinks - Worktables - Steam Tables - Griddles - Toastmaster Products - Carr China - Corning and Libby Glassware - International Silverware - Tables-Chairs-Booths. Wearever Utensils

IF YOU ARE INTERESTED IN NEW IDEAS-MODERN METHODS-LABOR SAVING EQUIPMENT . . .

DON'T MISS IT!

(No Obligation Of Course)

COME IN AND REGISTER FOR VALUABLE DOOR PRIZE . . .