

# College Health Service

Organized in 1915, the College Health Service promotes healthful living and treats ill and injured undergraduates. Dr. Herbert R. Glenn is in charge of its facilities.

The Dispensary is the outpatient department, with office hours from 8 a.m. to 12 noon and 1:30 to 5 p.m. during the fall and spring semesters. These hours are maintained Mondays through Fridays, with hours from 8 a.m. to 12 noon on Saturdays.

### Other Hours Listed

On Saturdays and holidays all patients will be cared for in the out-patient department of the College hospital, with 10 to 11 a.m. being set aside for outpatient treatment in the hospital for non-emergency conditions. The dispensary is located in 3 Old Main.

The Infirmary is the inpatient (hospital) department. With the exception of the regular College vacation periods, the hospital is open twenty-four hours a day and has a staff physician in attendance. The College hospital is located on the north side of Pollock Road, intersecting Shortlidge Road on East Campus.

### Certain Treatments Free

Each patient is entitled to certain routine medications and surgical dressings free of charge. Other unusual drugs and hypodermic injections will be charged to the patient.

Each patient is entitled to seven days of free treatment in the College infirmary each semester. Upon expiration of the free hospitalization, he is charged three dollars per day for any additional number of days required in any given semester. Expenses for consultation with physicians not on the staff must be assumed by the student.

The semester health fee does not include calls or treatment in students' rooms made by members of the health service staff. It is best to move the ill patient at once rather than wait for a physician to make a call in the patients' quarters.

### Includes X-Ray Expenses

The semester health fee includes the expense of one X-ray examination if ordered by a member of the medical staff. Additional X-rays are taken as needed at a cost of three dollars.

The laboratory facilities of the health service are included in all examinations ordered by the medical staff in the semester medical fee.

Visiting hours at the infirmary are between the hours of 2 and 4 p.m.

## Students to Seek Orchestra Posts

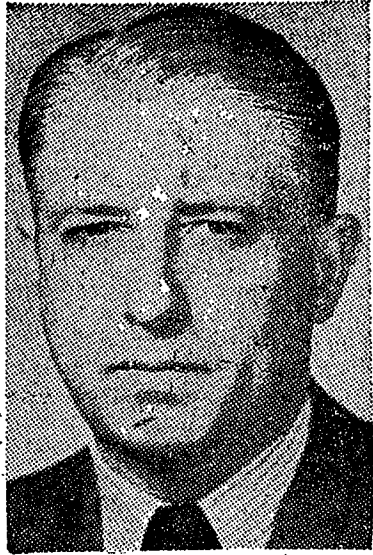
Students interested in playing with the College symphony orchestra are asked to try-out during next week.

This year the orchestra, which numbers 80 players, will be under the direction of Mr. Theodore K. Karhan.

Try-outs will be held in 107, Carnegie Hall, on Wednesday, Sept. 21; Thursday, Sept. 22; Friday, Sept. 23, Monday, Sept. 26; and Tuesday, Sept. 27.

The orchestra practices Tuesday evening at 7 o'clock.

The College Power Plant replaced 171 bulbs for building entrance lights and street lights during November, 1948. There are approximately 150 lampposts on campus.



DR. HERBERT R. GLENN

## Student-Run BX Aids Budgets

Last year the BX opened its student cooperative store, the first in many years. Operating along with the book exchange, in a special room in the TUB, the BX was set up on a provisional basis for one year only. This fall will complete the year's cycle and the Board of Trustees of the College will give the go ahead signal for a permanent BX, if they feel it has been and will continue to be a success.

The BX is managed by the student body, for the benefit of the student body. Last spring it was able to offer students a 20 per cent rebate on all purchases made there. The same policy will be carried forth this semester and as long as the students support the store.

In the past BX offered all types of school supplies and this semester many new items have been added. An attractive loose leaf binder will be on sale as a special of the store. These binders are embossed with the words "Penn State" in gold lettering.

Beginning on Friday, the BX will be open daily from 8:30 a.m. to 4:30 p.m. There is still a need for students to work as clerks in the store and anyone who is interested in working there should submit his name at the BX or to Robert Gabriel at Pi Kappa Phi.

Along with the BX, the student book exchange is run as a money-saving aid to the student body. Located in the same room as the BX, the book exchange sells books which have been left with it by students at the close of the semester. Anyone who wants to sell books can take them to the exchange and place his own selling price on them. The exchange is run on a non-profit basis.

## Labor Strife Rocks Nation; Stocks Drop

Late AP News Courtesy WMAJ

Ford Motor Company officials have indicated that the company may follow the pension plan of the President's Steel Fact-finding Board. This is what the steel industry has refused to do.

Ford is in contract negotiations with the CIO auto workers and the company is said to have offered the UAW a plan to give workers pensions of \$50 a month at age 68—without employee contributions.

## Big Steel Digs In While Strikes Loom

The steel industry is digging in for a nationwide strike—with no progress reported in efforts to avoid a walkout.

Chief Federal Mediator Cyrus Ching says nothing was accomplished at the latest meeting of union and industry representatives. However, more of these sessions are scheduled.

A CIO leader made it clear that if the industry refuses to accept the pension plan, the steelworkers union will "renew its demands for a wage increase."

At the mills, Bethlehem Steel has started closing down some of its great furnaces in Buffalo. And all other producers are expected to slow down operations to prevent damage if a strike comes. The deadline is midnight, Saturday.

## Twenty Countries Devalue Currency

At least 20 countries have put special mark-down prices on their currencies to date. And it appears that Italy, Western Germany and Belgium soon will descend into the bargain basement.

In England there is a threat of revolt by the workers at the policy of frozen wages in the face of high living costs.

In the US, the New York Stock Exchange has taken a severe nose-dive. However, this is believed to be due more to the threat of major strikes at home than to the overseas money uproar.

## UN Elects Romulo

LAKE SUCCESS—The Fourth UN General Assembly has elected Brigadier Gen. Carlos Romulo of the Philippines as its president. He is a veteran anti-Communist, and the Soviet bloc voted against him. It is believed Yugoslavia may have joined the West on such an issue for the first time.

The 50 windows on the front of the Electrical Engineering building contain a total of 800 panes of glass.

## Construction Progresses After Strike, Bad Weather

After delays caused by a carpenters' strike and bad weather, the construction program on campus has progressed well, according to George W. Ebert, director of the department of physical plant.

The new Foods building, located across N. Atherton street directly above the Greyhound Post House, reached completion several weeks ago and was put into service on Monday.

Slightly above the new Foods Building, the Navy water tunnel is "going along in fine shape." The workmen are pressure testing at present.

Work is progressing on the men's dormitories and dining hall. The dormitories are being built as extensions from the West dorms located behind Sparks, will extend along Burrowes Road to Pollock Road and behind Carnegie Hall and will be ready for use in September, 1950. The new dining hall will extend above West dorms at a location opposite Rec Hall.

The storm sewer extending from the east to the west-end of campus has been completed. Finishing touches are being made

to the scars left by the construction of the sewer.

With completion of the new stands at the north of New Beaver Field, the seating capacity has been increased from 20,000 to 30,000.

New team dressing rooms under the West stands will be used in place of similar facilities in the water tower and Rec. Hall.

The Plant Industries building, located at the corner of Curtin and Shortlidge Roads, is approaching final inspection, as is the Mineral Science building, located at the corner of Pollock and Burrowes Roads.

### Willard Status

Willard Hall, on Pollock Road to the right of Mineral Industries, will be put into use soon. The bursar's office will move to Willard Hall by October 15 for the collection of fees.

Installation of a 400-kilowatt turbo-generator, a new boiler and cooling tower at the power plant is complete.

MacElwain Hall, new women's dorm at Pollock and Shortlidge Roads, is being used for the first time this fall.

## Chapel Choir Stages Tryouts

Try-out auditions for students interested in joining the Chapel Choir will be conducted during the remainder of this week and the early part of next, according to Mrs. Willa Taylor, associate professor of music education and director of the choir.

All try-outs are scheduled for 211 Carnegie Hall. Sophomore women may audition from 9 to 11:30 a.m. and 1:30 to 4:30 p.m. today, and from 1:30 to 4:30 p.m. Friday. Sophomore men's auditions will take place at the same hours tomorrow, and from 9 to 11:30 a.m. Saturday.

Try-outs for upperclass women will be held from 1:30 to 4:30 p.m. and 7 to 9 p.m. Monday, with upperclass men appearing for auditions at the same hours on Tuesday.

Freshman women who could not attend try-out sessions yesterday are reminded that they may come at any of the hours stated above.

### First Rehearsal

The choir, which sings each Sunday at Chapel services and gives several musical programs throughout the year, will be re-organized at its first rehearsal in Schwab Auditorium and 117 Carnegie Hall next Thursday night.

Plans for the coming year include a Midnight Christmas Carol Service before the Christmas vacation, the performance of Bach's cantata, "Christ Lay in Death's Dark Prison," at Easter, and the presentation of Mendelssohn's oratorio, "Elijah," with guest soloists late in the spring semester.

**At Your Warner Theater**

**Catham**  
NOW  
PRESTON FOSTER  
"BIG CAT"

THURSDAY  
ALAN LADD in  
"THE BRIDE WEDS"

Coming Friday  
JAMES CAGNEY  
"WHITE HEAT"

Coming Tuesday  
GLENN FORD in  
"MR. SOFT TOUCH"

**State**  
NOW  
JOHN HALL  
"MUTINEERS"

Coming Friday  
Striking! Startling!  
MIGHTY JOE YOUNG

Coming Tuesday  
RICHARD WIDMARK  
Slattery's Hurricane

**Nittany**  
TONIGHT—Ray Milland  
"GOLDEN EARRINGS"

**Back To School**

**WELCOME PENN STATERS**

You can look your very best if you try the new contour cut given by our expert hairdressers.

Give new loveliness to your hair as it is cut to the shape of your face. Make your appointment today at

**HOTEL BEAUTY SALON**  
(OVER THE CORNER ROOM)  
PHONE 2286



(Clip and Save)

**NOW YOU CAN FLY FROM STATE COLLEGE**

Read Down	Read Up
7:30 a.m. 11:10 a.m. .... Pittsburgh	10:37 a.m. 2:47 p.m.
8:15 a.m. 11:55 a.m. .... STATE COLLEGE	9:07 a.m. 1:59 p.m.
10:51 a.m. 2:16 p.m. .... New York	7:05 a.m. 12:00 noon

\* Daily except Sunday.

**Fares: State College - Pittsburg ..... \$ 8.05**  
**State College - New York ..... \$14.30**

Your downtown ticket office for All American Airways and every other air line to any destination in the world

Your Authorized Travel Agent

**STATE COLLEGE TRAVEL BUREAU**  
Commerce Club Office — 108 W. College Avenue — Phone 2681