

'Army Special' To Make Trip To West Point

Ask 350 Quota To Guarantee Train

A special student train to West Point for the Army-Penn State football game October 1 was announced yesterday by Bellefonte Central Railroad officials. The train will originate in State College.

To be known as "The Blue and White College Special," the train will require 350 reservations before the railroad will guarantee it. Students will be given from Monday until Thursday of next week to make reservations.

Fare Is \$15.15

The railroad set the round trip fare at \$15.15, guaranteed air-conditioned coaches, and offered as a bonus a ticket to a radio broadcast program in a New York studio. Officials also announced that coach lunch service would be available from Harrisburg to West Point.

Pending receipt of the required number of reservations, the starting time of the trip was set for 11 p. m. Friday, September 30, arriving in West Point at 9:20 a. m. Saturday. The train will leave West Point after the game at 5 p. m., arrive in Weehauken at 6:20 p. m., leave the Pennsylvania Station in New York at 3 a. m. Sunday, October 2, and arrive in State College at 11 a. m.

Sale Monday

The sale which will determine whether the special will be run will begin Monday, from 8:30 a. m. to 12 noon, and again from 1:30 to 4:30 p. m., at the ticket windows of the Athletic Association, first floor, Old Main. The train will be guaranteed as soon as the 350-person quota is reached.

Hatmen Coach Flash-Card Men

Fifteen hatmen will control Penn State's flash-card section at home football games this year. Now in its second year, the flash-card section is designed to add color to the Nittany football spectacle, and will be composed entirely of sophomore men, according to present plans.

"We want to see all sophomores take an active part in support of the team," declared Dick Clair, head cheerleader. He explained that this year's flash-card section will be "NF" in the curve of the U-shaped stands.

"The privilege of taking part in the flash-card system will go to the first 660-odd sophomore men who fill section 'NF' this Saturday," Clair said. "They should be in their seats by 12:30 p. m."

There to greet the sophomore men in section "NF" will be 15 row captains chosen from ranks of three Nittany hat organizations, Parmi Nu, Skull and Bones and Blue Key. Each captain will have charge of two rows of card-flashers.

Sponsoring the flash-card venture. (Continued on page 17)

Today . . .



The Nittany Lion Roars

FOR each and every one of the "FIVE HUNDRED"—meaning, of course, our new frosh women, as distinguished from any MYTHICAL social group. The LION hopes to meet and get acquainted with you girls—and vice-versa—while you're in his den.

He's rooting for you in all your endeavors at State and is glad to salute you at a good and respected college—YOUR OWN PENN STATE.

The Daily Collegian

"FOR A BETTER PENN STATE"

VOLUME 50 — NUMBER 1

STATE COLLEGE, PA., WEDNESDAY MORNING, SEPTEMBER 21, 1949

The Weather:
Fair and Cooler

PRICE FIVE CENTS

500 Women Herald Frosh Return; Intensive Orientation Planned

Thirty-five hundred new students, including 500 freshmen women, are being introduced to life at Penn State in what promises to be the most intensive Orientation Week program the College has ever seen.

Beginning with a meeting with the Dean of Women Sunday night for the freshman group and convocation in Rec Hall last night for all new students, the activities planned by the College and student groups will make the transition into a full, active collegiate life as quickly and detailed as possible.

Following the mass meeting last night, at which the students were welcomed to the College by Acting President James Milholland, and at which the Deans of the College were introduced, all students this morning are meeting in School groups.

Hours for this meeting and all others throughout Orientation Week are listed in detail in the mimeographed program which was distributed at the convocation.

With a week of activities filled with counseling and scheduling conferences, scholastic aptitude, and psychological tests, health ex-

Frosh, Soph Coeds to Hear WSGA Address

Orientation of all new coeds had its official send-off last night as all new students attended the Convocation in Recreation Hall. A continuation of the orientation program with a special slant for women will last until next Tuesday.

Freshman women, who arrived Sunday, attended a welcome meeting in Schwab Auditorium to begin their orientation and were greeted at this time by Ray V. Watkins, College Scheduling Officer, Pearl O. Weston, dean of women, and by other members of the dean of women's office.

At 7 p. m. tonight both freshman and sophomore women will attend a meeting in Schwab Auditorium to hear about the Women's Student Government Association. Chimes and Cwens, women's activity and scholarship honoraries, will present the essential facts about WSGA, part (Continued on page 17)

All-College Mixer

An All-College mixer to which all students are invited is slated for Osmond Lab parking lot beginning at 8:30 p. m. on Saturday. Sponsored by All-College Cabinet, it will feature the music of Jack Huber's orchestra. In case of rain, the mixer will be held in the Tub.

The affair is the second and final mixer of Orientation Week, the mixer sponsored by the Penn State Christian Association scheduled for Thursday night.

Harry McMahon, All-College Vice-President and chairman of the Cabinet Orientation Committee, reminds students of the change in time and place of the mixer from those stated on the Orientation Program forms distributed at last night's convocation.

New Students Hear Leaders In Rec Hall

Student leaders representing major fields of activity on campus will explain those activities to new students at a meeting sponsored by All-College Cabinet in Rec Hall at 8 p. m. today.

Originally set for Beaver Field, the event has been moved because of the unavailability of the stands.

Ted Allen, All-College President, will open the meeting, and will be succeeded by Joel Fleming who will serve as master of ceremonies.

Speakers include James Gerhdes, president of the Athletic Association; Peter Geisey and Dolores Jelacic, respective presidents of Interfraternity and Panhellenic Councils; James Linde- (Continued on page 17)

Pep Rally Set For Friday Eve

Sophomores and freshmen new to the campus will experience their first Nittany pep rally Friday. The event is slated from 9 to 9:45 p. m. at the Lion Shrine and will feature songs and cheers, music by a makeshift Penn State Blue Band, introduction of several campus notables, and a personable appearance by the Nittany Lion.

Scheduled for 7 p. m. in the original Orientation Week program, the pep rally has been moved back to 9 p. m. because it was impossible for the Blue Band to organize by the earlier hour.

Hour Conflicted
"Having the rally at 8 p. m. was out too," declared Richard Clair, head cheerleader, "because the Women's Recreation Association open house in White Hall will be at that hour."

The 7 p. m. time for the pep rally also conflicted with a meeting of Pollock Dormitory men at the PUB. Daniel A. DeMarino, assistant dean of men, has announced that the Pollock gathering has been set back a half hour to 7:30 p. m. Friday.

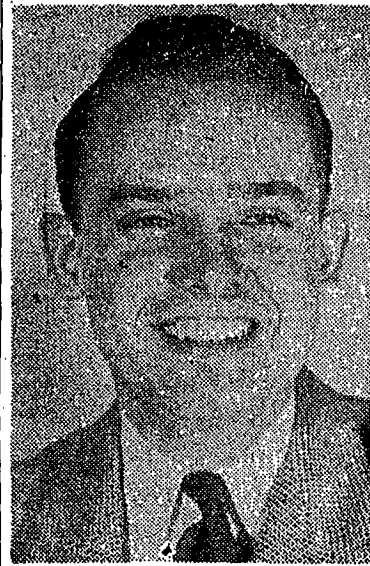
Tentative Program
Morton Snitzer, Skull and Bones president, and Clair are planning the rally program which tentatively includes introduction of James Milholland, acting president of the College; Joe Bedenk, head football coach; Frank Patrick, assistant football coach; Sever Toretta, assistant football coach; Negley Norton, football co-captain, Bob Hicks, football (Continued on page 17)

Orientation Issue

Today's 24-page Daily Collegian is a special Orientation Week issue mainly aimed toward helping new sophomores and freshmen—and a few new juniors—to become settled solidly on Nittany soil.

A pre-Villanova game issue will appear Friday. It will be available at Student Union in Old Main.

Beginning next Tuesday, the Daily Collegian will be published regularly five times weekly, Tuesday through Saturday, with distribution to various living units.



Ted Allen

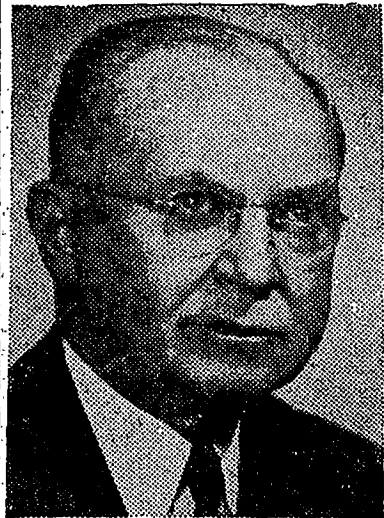
Student Welcome

On behalf of the student body and its student government I welcome you, the classes '52 and '53, to the Main Campus.

It's a new school year and a new campus for you new Penn Staters. I imagine the campus and school operation appear huge and vast—and so it is, compared with schools you've previously attended. Likewise you'll find many more and a greater variety of activities in which to take part. Don't let size and volume bother you. Take steps immediately to participate in the activity or activities of your choice.

Without doubt I know each of you had a place in some phase of school life in the schools from which you came, and we hope you'll readily find and establish your place here at State. The upperclassmen, I'm sure, will help you get started because we're anxious to have your talents and abilities included in our continuous drive to responsibility of making a bigger and better Penn State. This is your school and your campus. To fully enjoy your college life, be a real Penn Stater.

TED ALLEN,
All-College President



James Milholland

President's Message

Welcome to Penn State. Many of you have been Penn State students for a year and are merely transferring to the main campus. However, 500 of you are freshman women—the first on the campus since the war. We are especially happy to have you with us.

We know all of you will find problems of adjustment, whether you have had a year of college or not. There will be new ways of doing things, new living conditions, new study requirements, and new recreational and social activities. Because of the size and complexity of the College you will find a greater need than ever before to carefully plan the use of your time and energies. We urge you to do this planning on the basis of sound values.

The opportunities are here, and we pledge our efforts to help you use them to the best possible advantage. The rest is up to you. I am confident that you will do your best, too, and that together we will have a good year.

JAMES MILHOLLAND,
Acting President

aminations, mixers, informational programs, and registration, students will meet together in several sessions.

Cabinet Program

A program sponsored by All-College Cabinet in Rec Hall at 8 p. m. today will introduce students to campus leaders who will explain the organizations and activities open to all students.

Two mixers, one in front of Old Main tomorrow at 8 p. m., sponsored by the Penn State Christian Association, and an All-College mixer set for the Osmond Lab parking lot beginning at 8:30 p. m. Saturday, will provide students with dancing opportunities and a chance for freshman women to become acquainted with the male element on campus before customs go into effect next Wednesday.

Students Rally

A pep rally slated for 9 to 9:45 p. m., Friday will expose newcomers to their first real display of Penn State spirit, and further acquaint them with school songs and cheers.

After a hectic Saturday rooting for their new Alma Mater in Beaver Field, where the Nittany Lion will meet the Villanova Wildcat in a football tussle, the accent shifts to orientation along spiritual lines.

All students are invited to attend the first chapel service of the fall semester in Schwab Auditorium, beginning at 11 a. m. Sunday. James T. Smith, acting chaplain, will preside, and Dr. Raymon Kistler, president of Beaver College, will deliver the address.

Religious Program

An interdenominational religious program will be held in Schwab Auditorium at 8 p. m. Sunday, when professional religious leaders in town and on campus will be introduced.

Last Flights On Air Route End Sunday

All American Airways has announced that starting Sunday the last east and west-bound flights between Pittsburgh and New York stopping at the State College Air Depot will be discontinued.

Darkness and time changes were given as the reason for dropping the two flights. Airline officials said they would not be resumed until the days become longer next Spring or until lighting facilities are installed at the airport.

The airline now serves the County with six daily stops. After (Continued on page 17)

You're New Here

For info on what's Nittany-wise turn to:
Registration Page 3
Tickets for Army game . . . 3
Late AP News 5
Health Service 5
AIM and Penn State Club . . 6
Publications 6
Sports 8, 9, 10, 11
Society 12, 13, 14, 15
Parking Regulations 20
Hat Societies 14, 20
Campus Politics 20
NSA 22
IFC 23
Pan-Hel and Women's Independents 14