

Co-op Captures Table Tennis

The Co-op beat Simmons in table tennis Tuesday night, winning the doubles and one single set.

Jean La Bar won the last two games out of three with Simmons' Carline Karchner, 21-16; 21-18; but lost the first 21-16. Lois Flynn retaliated by beating Skip Slangenaupt of the Co-op 21-19; 21-8, but losing the third game 21-16.

Suzanne Hosler and B. J. Sammons trimmed Jane Durkin and Phyllis Starr 21-19; 21-9 to bring the Co-op through for a win.

Chi O's Win

Gamma Phi Beta lost to Chi Omega who downed them in table tennis in the doubles and one single game.

Barbara Sprengle beat Chi O Jean Murphy 21-19; 21-15, after losing the first set 21-18. Christie Post came back with a win over Elaine Nelson of Gamma Phi 21-17; 21-19; losing one 21-11.

The Rice twins, Carolyn and Fran whipped Loretta Neville and Renee Kirk, giving the Chi O's a 21-13; 21-15 victory.

Kappa Alpha Theta won a triple-header in badminton Tuesday night against AOPI.

Nancy Parent faced Marie Wroblecki, winning 11-8; 11-8. Jean Cameron played Kay Bitner and came out with the same score, 11-8, 11-8.

Janet Jones and Maria Hughes capped the climax for the Thetas, walloping Gertrude Shade and Effie Lou Lichter 15-3; 15-1.

Kappas Get Full House

The Kappas got a full-house, too, by beating AChiO in three sets of badminton.

Virginia Miller beat Shirley Cook 11-1; 11-2. Pat Harrington, of Kappa Kappa Gamma, facing Jean Jarrett, won 11-6; 11-8, but lost one game 11-6.

Janet Lyons and Doris Herring finished up by beating Sarah Pate and Jeanne Mowry 15-4; 15-1.

Gamma Phi Beta, AOPI, Kappa Kappa Gamma, and the Co-op came out on top in their volleyball games Wednesday night when they beat ChiO, Kappa Alpha Theta, AChiO, and Simmons respectively.

Gamma Phi Tops Chi O

Gamma Phi Beta topped Chi Omega by five points, winning, 45-40. Pat Wolfe made a high of 17 points for the Gamma Phi's. Kathryn Peters scored the most points for ChiO, adding nine to their total.

Alpha Omicron Pi beat the Thetas by the same score in their League II game. Commie Keller got the most points for KAT, 10. Ginny Brown accrued 13 points for AOPI.

KKG slaughtered Alpha Chi Omega 50-27. A quartet of ball-heavers, Ginny Miller, Nancy Zeigler, Barbara Leith, and Lois Conover each contributed eight points to the Kappa's score. Pat Lindmark and Gerry Dosey made six points each for AChiO.

Table Tennis

Table tennis gave Delta Zeta a triple loss in the three games played against Alpha Xi Delta.

Singles between Mary Haeseler and Theresa Gorka gave Alpha Xi two wins and a loss, 21-13; 21-19, Gorka taking the last 21-13.

Alpha Xi's Grace O'Donnell and Jackie Wengert of DZ made the same 2-1 ratio in favor of Alpha Xi, 21-18; 21-19, with Jackie Wengert winning the last game 21-16.

The doubles showed an undeniable victory for Alpha Xi Delta, Shirley Grow and Mary Cohen raised the score against Doris DeHoff and Grace Miller 21-9 21-12.

ZTA Tops Leonides

Zeta Tau Alpha topped Leonides in their table tennis battle, winning the doubles set by a consistent 21-17 score, Rose Eifert and Nancy McCormick facing ZTA's Helen Bailey and Peg Rothermel. Francie Welker of the Zeta's won over Pat Henry 21-15; 21-12.

Dot Roseman saved face for Leonides by taking two out of three singles with Tracy McCormick, 21-13; 21-10; her losing game was 21-18.

Philotes won the doubles set from Phi Mu in their game Nancy Smith and Shirley Foulke playing against Lois Van Vactor and Reta Reed, 21-19; 21-15.

Fenny Fetter beat Yvonne Worrell of Phi Mu 21-18; 21-14,

Brown—Rodli

Patricia Rodli, graduate, was married to Robert Brown, alumnus, in the Huntingdon Episcopal Church, Saturday. Following the ceremony a reception was held at the Huntingdon Country Club.

Miss Rodli, who is a member of Delta Gamma sorority, was graduated in January in the Arts and Letters Curriculum.

Sykes—Davenport

The marriage of Jeanne Davenport, Alpha Chi Omega, to John Sykes, Delta Chi, took place in the St. Timothy's Episcopal Church in Roxborough, February 2.

A formal reception was held, following the ceremony, at the Alden Park Manor.

Late Permissions

Coeds may have two o'clock permissions for the Sophomore Hop being held in Recreation Hall from 9 p.m. to 1 a.m. today. Janet Lyons, president of WSGA, announced.

losing one match 21-18. Barb Keller gave Phi Mu two wins in her three games against Joan Ferry, 21-18; 21-12. Her losing score was 21-12.

Badminton games between Kappa Delta and Ath I, and between Ath III and the Tri-Delts were won by forfeit by the former teams of each duo.

Co-Edit Column

Delta Gamma

Delta Gamma entertained Pi Kappa Alpha at a scavenger hunt Sunday afternoon. Tuesday night the sorority pledges entertained pledges of ten fraternities at an informal party in Simmons Recreation Room.

Alpha Phi Delta

The following officers were recently elected by Alpha Phi Delta: Anthony C. Lordi, president; John C. Catherine, vice-president; Richard J. Audino, treasurer; Leo R. Nortari, secretary.

Kappa Delta

A tea was held by Kappa Delta in honor of its province president, Mrs. Dorothy West of Pittsburgh, in Atherton Hall Tuesday evening.

Alpha Zeta fraternity entertained the girls at an informal party on Sunday afternoon.

Pi Lambda Phi

Pi Lambda Phi recently pledged the following men: Andrew Adelman, Barton Cahan, Richard Goldner, Arnold Jurin, Gerald Salman, Stanley Schwartz and William Zeidner.

Tau Kappa Epsilon

At elections held by Tau Kappa Epsilon on Monday William Wilhelm was elected Pylortes; Donald Miller, alumni secretary; Norman Cochrane, member of the judicial committee.

Theta Phi Alpha

Mary Lou Rule and Virginia Mary Sinclair were initiated into Theta Phi Alpha at a dawn initiation on Sunday.

The sorority will celebrate its twentieth anniversary at a banquet in the Nittany Lion Inn at 6 p.m. Saturday.

Rho chapter was locally founded at the College in 1927 and became nationally affiliated with Theta Phi Alpha in 1929. It was the second national sorority to be established at the College.

Alpha Omicron Pi

Alpha Omicron Pi entertained Delta Upsilon at a skating party on February 10.

Delta Zeta

Delta Zeta held its annual Pledge Dance on Saturday night at the Phi Kappa Tau house. Music was furnished by Pat Paterson and his orchestra.

Engagements

Wolfson—Farkas

Announcement has been made of the engagement of Thelma Farkas, senior, to Stanley Wolfson, alumnus.

Miss Farkas is in the Commerce and Finance curriculum.

Wolfson is a member of Alpha Epsilon Pi. He is working in Washington where he is employed as a bacteriologist with Food and Drugs Administration.

Brown—Reznor

The engagement of Beverly Ann Reznor, Greenville, to Emory J. Brown, Soudersborg, has recently been announced.

Miss Reznor, who graduated from the College in June '47, is teaching in Freeport. Mr. Brown, a June '48 graduate, is taking graduate work here. He is member of the Alpha Zeta fraternity.

Units Elec Delegates

Units whose delegates to the House of Representatives have been graduated, are practice teaching or are in a home management house should elect new representatives before the next meeting of the House in the Dean of Women's office, at 6:30 p.m. Tuesday.

We must pass pretty stiff exams, too

Not only the steel we use must pass a rigid test . . .

We have a "board of examiners" which tests the merits of all the operations of our company.

That "board" consists of our employes, our customers, and our stockholders—the three groups which have a primary interest in our business.

We believe it is to the benefit of the entire social order that we operate our company in the best interests of these three groups. And they give us some pretty tough quizzes from time to time.

We believe our customers deserve the very best product we can manufacture at the lowest possible price. Our employes are entitled to steady employment, good working conditions, and the highest possible income consistent with the economics of the business. Our stockholders should have a reasonable return on the capital they invest in our business. Our constant purpose is to maintain a fair balance between these three groups.

In every college community in the country, one or more of these groups is represented. How well do our principles work out in practice?

TAKE EMPLOYES. In the last six years, the number of IH employes has increased from 60,000 to 90,000—an increase of 30,000 jobs. In the same period, the average straight time hourly earnings of our factory employes have increased 92.6%.

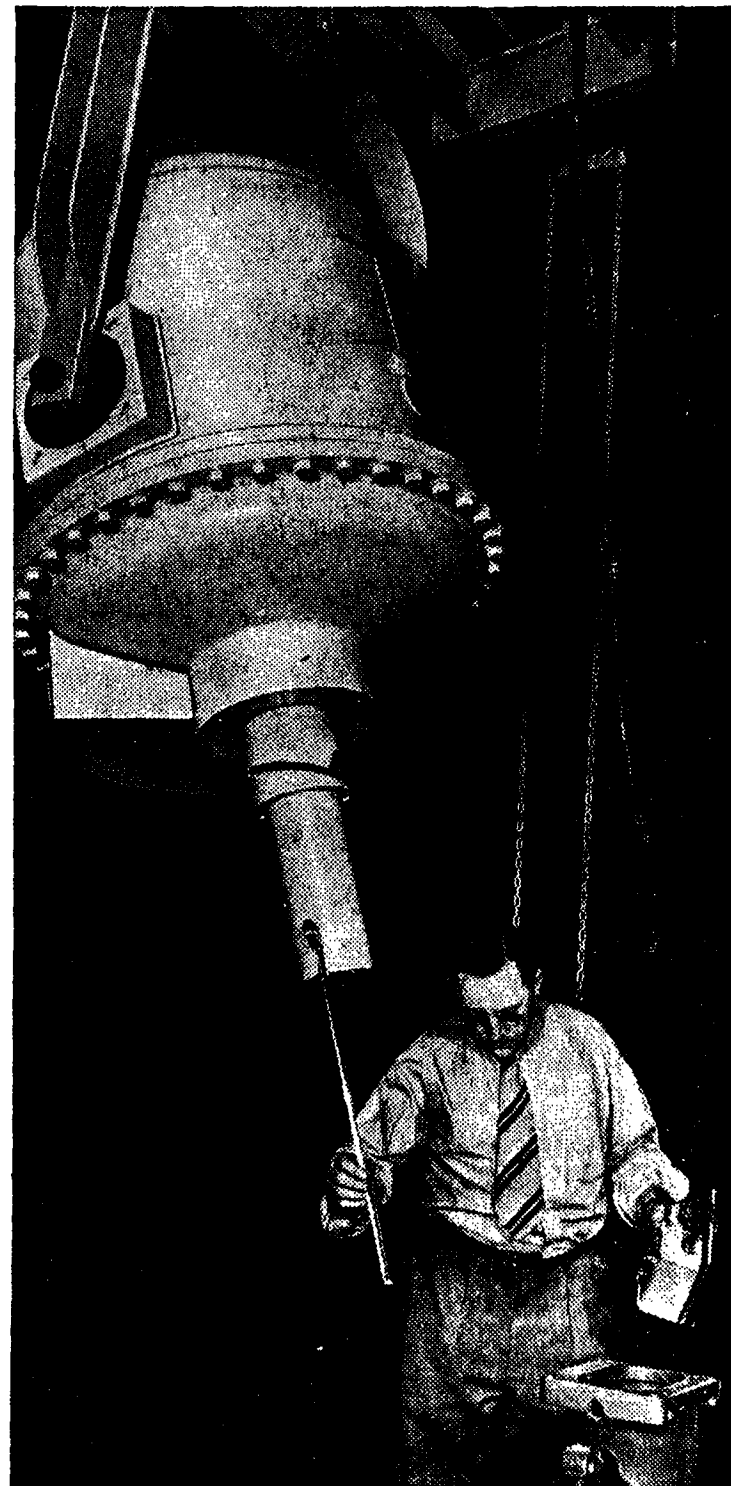
TAKE CUSTOMERS. Last year we produced more goods and services than ever before. Customers benefited from the fact that our margin of profit on sales was one-third less than in 1941.

TAKE STOCKHOLDERS. They have had fair return on the savings they have invested in our Company. Dividends on common stock last year are equivalent to 5% on the book value, as compared with 4% in 1941.

TAKE THE COMPANY. Last year we had profits, after taxes, of 5½ cents from each dollar of sales. We believe most people regard this as a reasonable rate of profit.

We know it is our continuing ability to earn a reasonable profit that has made it possible for International Harvester in the past year to serve more people—customers, employes, and stockholders—in greater measure than ever before. Profits mean progress for everyone.

We hope to be able to continue this record with each succeeding year in the future.



This 1,000,000-volt X-ray machine in Harvester's Manufacturing Research Department "looks through" 5½ inches of steel to examine the structure of fabricated parts. To protect operators and others from secondary radiation from its powerful tube, the machine is housed in a room with concrete walls 18 inches thick. Control is from a panel outside the room.

INTERNATIONAL



HARVESTER

180 NORTH MICHIGAN AVENUE • CHICAGO, ILLINOIS