

Leonides Elects Eifert President

Rose Eifert was elected president of Leonides, independent women's association, Monday night.

Mary Lou Henry was elected vice president; Mary Romash, recording secretary; Marie Card, corresponding secretary; Joan Burlein, treasurer.

The following were appointed heads of committees: athletic, Sally Greenberger; publicity, Annie M. Allan; social, Sally Seagrave.

Sarah Robertson and Paula Furry were appointed representatives to All-College Cabinet during spring week.

Dorothy Roseman was appointed representative to the Council on Racial Equality.

After the election, the constitution was ratified. Representatives will meet on the first and third Mondays of each month.

Independent women living in town should leave names at the Student Union desk in Old Main and specify which of the following committees they would be interested in working on: athletic, social, and publicity.

Home Ec Student Wins Cwen Award

Ruth E. Tait, a sophomore in the School of Home Economics, has been named recipient of a Cwens' \$50 scholarship award, Betty Lou Shelley, president, announced.

Each year Cwens, sophomore women's service honorary, endeavors to award a \$50 scholarship to a sophomore woman whose scholastic average is noteworthy and who will further herself in her studies as well as in the other aspects of life.

Names of prospective girls are suggested to Cwens by the Dean of Women's Office and the selection is then made by the group. Miss Tait was deemed the most deserving of the girls mentioned. She is from Stetlersville.

Pi Lambda Phi

Pi Lambda Phi elected the following men to office Monday night: Murt Green, rex; Millard Braunstew, archon; Saul Levy, keeper of the exchequer; Philip Rosenau, scribe; Willard Freedman, marshal. Men elected to the executive committee are Wolford Swimmer, Harold Judd, and Joseph Reinhiemer.

Good Food
and
FOUNTAIN SERVICE
FRED'S
128 S. ALLEN ST.

Engagements

Hill—Baker

Helen Baker, a '48 alumna of the College, became engaged over the holidays to Harold Hill. Miss Baker was an Education major and now teaches at Mifflinburg High School. Hill, a senior in Industrial Engineering is a member of Chi Phi fraternity.

Brill—Perloff

The engagement of Lorraine Perloff of Philadelphia, a junior in science, to Martin Brill, of Reading, a senior in commerce and finance, was announced on Christmas Day.

Berletics----

Continued from page three

dropped its contest to Phi Epsilon Pi, 23-9, and the Penn State Club lost number five, 29-14, to the Penn Points.

In other action last Friday, Sigma Nu punted Phi Kappa Tau, 18-10; Chi Phi battered Alpha Chi Sigma, 20-7; Pi Lambda Phi edged Sigma Phi Epsilon, 14-13; Delta Chi outfought Sigma Phi Alpha, 17-7; Tau Kappa Epsilon rushed over Sigma Alpha Epsilon, 18-15; Theta Chi doubled Alpha Zeta, 20-10, and Delta Sigma Phi walloped Alpha Phi Delta, 21-6.

Tonight's schedule follows:
8:45 p.m.—Nittany Co-op vs. Drexlers, court one; Shrimps vs. Century Boys, court two; Indians vs. Coal Crackers, court three.
9:25 p.m.—Watts Stars vs. Ramblers, court one; Golden Eagles vs. Team X, court two; Womers Roamers vs. Murgas, court three.
10:05 p.m.—Ath Hall Men vs. A.R.O., court one; Lions vs. Architects, court two; Section 10 vs. Ceramics, court three.

Fogg Chooses ----

Continued from page three

though they may place ahead of one of the official entries.

Actually, six scoring events are included since the cross-country and jump scores and the slalom and downhill scores are combined to form separate events. The combination of the cross-country and jump events is officially known as the Classic Combined. The slalom and downhill combination is officially designated as the Alpine Combined.

For a team to score in the

Announcing the SWEETHEART DANCE GIRL ASK BOY AFFAIR
SATURDAY, FEB. 12
WHITE HALL
Semi-Formal
BOB CLEMENS AND HIS ORCHESTRA

CLASSIFIEDS

All classified advertisements must be in by 12:00 p.m. day preceding issue. Prices are 40c one insertion; \$1.00, three insertions; 17 words or less. All words over 17 three for 5c for each insertion. Call Collegian 6711.

LOST

BLACK PARKER PENCIL with gray top, gold band, before Christmas vacation. Sentimental value. Call Kitty 3872.

GREEN AND BLACK striped Shaeffer pencil Monday between Pond Lab and Sigma Chi House. Gold band with J. D. Cooner Jr., engraved. Call Cooner 6786.

LOST - ONE rhinestone ear-ring, between Phi Epsilon Pi house and Atherton Hall Saturday night. Call 161 Atherton.

WOMEN'S GOLD Imperial wrist watch at White Hall on Thursday. Call June 109 Simmons.

BLUE TOPCOAT Sunday in New College Diner. Please return. Have yours. Call Art 4249.

LADIES BRACELET wristwatch. Gold case, Swiss movement. Friday night between 9 and 9:30 on College avenue between State Theatre and Corner Room. Call Elaine, 348 Atherton. Reward.

FOR SALE

1939 PALACE TRAILER, 25' overall, \$850. Inquire James Young, Hoover Trailer Camp.

SKI BOOTS Czechoslovakian made, size 10-10½. Call Franckie 851.

DETROLA candid camera with wollensak 3.5 lens, filters, sun shade and leather case.

Classic Combined and the Alpine Combined, three members of each team must compete in each of the two events comprising each of the Combined. Four official entries are allowed, of which the best three score.

REGULAR TO \$2.95—Men's shirts now on sale for \$2.37. College Sportswear. Second floor Bargain Room.

AUTOMOBILE RADIO for late model car. Call 4388.

TRAILER for sale in excellent condition. Occupancy beginning February 1st, 708 Windcrest.

1931 MODEL A FORD. Tires and engine in good condition. \$135. Call Bob Zeller, 4019.

1948 ALMA house-trailer, 1012-A Windcrest. Three rooms, 27 foot long. \$1,500. Apply within.

ONE PAIR ridge top hickory laminated skis, 6' 3". Cable bindings, steel edges, plastic bottoms. Call 352 Simmons.

STEAMER TRUNK—year old, good shape. Holds up to twelve garments. Three roomy drawers. Reasonable. Call Latzo, Collegian office or 5051-2nd Irvin.

WANTED

WILL PAY 25c for each copy of issue number 19 of Daily Collegian. Call 4908 Morgan.

SINGLE ROOM in quiet home for graduate student starting Feb. 5. Call Al, phone 2796.

FOR RENT

THREE ROOM furnished apartment with bath, Bellefonte. Write Box 261, State College. Available Feb. 1st.

MISCELLANEOUS

TYPING - REASONABLE. Also rewriting, editing, research. Phone 6847.

FRATERNITY NEWSPAPERS
All Kinds of Printing
Commercial Printing Inc.
Glennland Bldg., State College

EARN \$2.00 an hour in your spare time as campus representative of fast-selling line. Call Mr. Jones, State College 2760 between 3 p.m. and 7 p.m. today or tomorrow.

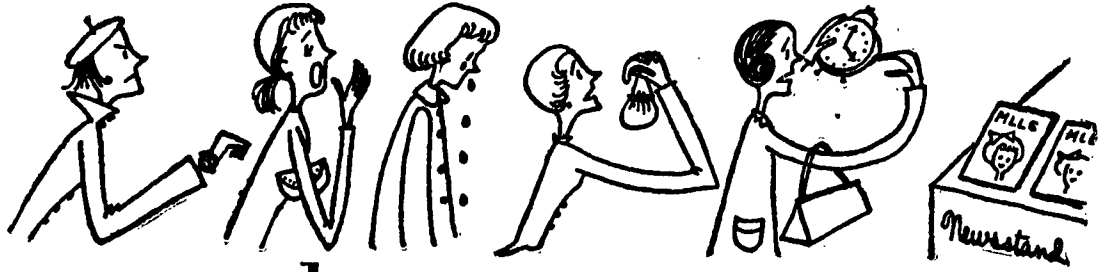
NOW AT YOUR WARNER THEATER

Cathou
Dana Andrews
Lilli Palmer
'NO MINOR VICES'

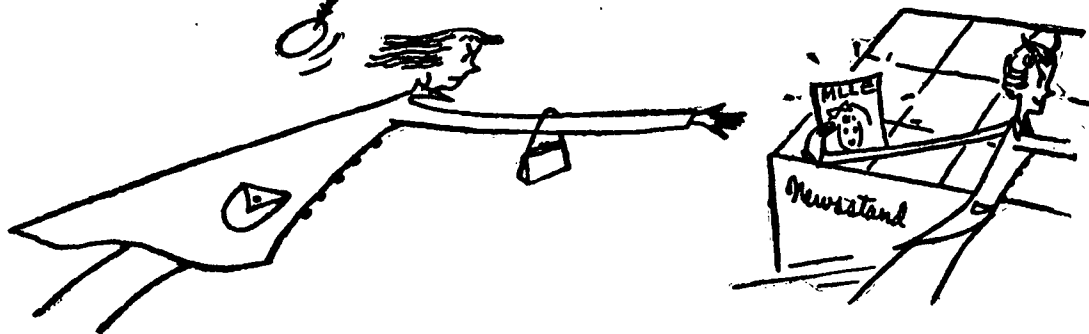
State
Rod Cameron
Liona Massey
'The Plunderers'
In Color

Nittany
World's Greatest Thrill Spectacle!
The Olympic Games of 1948
In Technicolor

if you have been standing in line at your newsstand every month to get your copy of MADEMOISELLE...



only to find that MADEMOISELLE is sold out...



... here is what you should do today! Fill in the coupon below and enjoy the next twelve issues of your favorite magazine — at less cost than if you could buy it at your newsdealer's.

MADemoiselle has been able to increase its circulation to provide a limited number of subscriptions for college girls but, because of the great demand for this campus favorite, you should act today.

MADemoiselle
P. O. Box 494
Elizabeth, N. J.

check
Herewith is my money order, for which please enter my subscription to MADemoiselle for one year.

Name.....Street.....
City.....Zone.....State.....
College.....

Remit: \$3.50 in U. S. A.; \$4.50 per year in Canada.

-- USER CAR SPECIAL --

1941 DODGE 4-DOOR SEDAN
LUXURY LINER

REBUILT MOTOR — NEWLY PAINTED
HEATER — DEFROSTER — RADIO

A Really Beautiful Used Car. Ready For Immediate Delivery. With The Usual McClellan Used Car Guarantee

McClellan Chevrolet Inc.

642 E. COLLEGE AVENUE
(AT THE END OF E. COLLEGE AVE.)

More Than 30 Good Used Cars and Trucks
(Reconditioned and Guaranteed) To Select From