

Campus IRC

(Continued from page one)
 assistant; Jane Fouracre, parliamentarian; Patricia Botkin, secretary.
 Round table chairmen, Rosemary Maloney, Ned Armsby, Sally Searight, Phyllis Kistler.
 Vice-chairmen, Christine Aland and Mary Soprano.
 Reception committee, Shirley Peet, Diva Petrucci, Dottie Buckius, Frank McNeil and John Sedaco.
 Physical arrangements committee, Rosemary Maloney, chairman; Christine Altenburger and Jean Israel.
 Correspondence committee, Salley Robertson, chairman; Jo-

Pi Kappa Phi

At its "Dogpatch Drag" over the weekend, Pi Kappa Phi showed the joys of Penn State college life to its guests from out-of-town, including Norma Abramson, Marge Arron, Kay Boyer, Dot Corocan, Katherine Daniel, Doris Finlay, Joan Fuller, Gerry Gorum, Beverly Herr, Kathryn Hoffman, Nancy Jones, Mary Kane.
 Joyce Keller, Frances Kessel, Dorothy McClimans, Betty Miller, Evelyn Miller, Mary Lou Moll, Rose Naeger, Donna Phillips, Marion Reed, Betty Simon, Lois Sprow, Jean Wampler, Kitty Wojciehoski, and Miriam Zellner.

soph James, Isobel Level and Helen Stakowski.
 Financial committee, Diva Petrucci.
 Transportation committee, Michael Deckman and Richard Leeper.
 Housing committee, Ann Manzcsek, chairman; Ruth Lopin, C. Morey and Al Hanevick.

WSGA Opens Christmas Drive, Plans Three Worthy Projects

The twentieth annual Christmas Drive sponsored by the WSGA House of Representatives begins today and will close December 3, according to Shirley Gauger, vice-president of WSGA.
 Each girl on campus will be asked to contribute a minimum of 30 cents to the goal of \$420, established by the House as necessary in carrying out the projects planned. This money will be collected by a member of the House of Representatives living in each dormitory unit.

Beginning in 1926, WSGA has helped several institutions and groups with their Christmas gifts. This year contributions will be made to three main projects, the Mifflin County Children's Aid Society, the American Women's Hospitals, and the Emergency Fund established by Mrs. Ralph Dorn Hetzel, wife of the College's late president.
 The Mifflin County Children's Aid Society, located at Lewisport, assists children who have been adopted into families unable to provide for more than the bare necessities of life. The Society uses the money contributed by WSGA to buy toys, clothing, and provide a little spending money for these adopted children.
 Lacking endowment, the American Women's Hospitals organization depends from year to year upon the generosity of groups like WSGA to aid them in their relief work among the civilian population of Europe.
 The third part of the campus contributions will be given to the Emergency Fund established by Mrs. Hetzel to help College students to meet emergencies by loans from the Fund for hospital care, books, and fees.
 Anyone else wishing to contribute may put his money in

Panhel Meeting

Panhellenic Council members are asked to meet in the Zeta Tau Alpha suite lounge, 271 Simmons Hall, at 7 p.m. Tuesday instead of in Old Main, according to Adelaide Finkelston, president.

Alpha Omicron Pi

Alpha Omicron Pi entertained their National vice-president, Mary Lindrooth, at a dessert party last Tuesday evening. The party was held at the sorority house where representatives from all sororities and sorority advisors were present.
 Monday evening, Nancy Neubaum was pledged to the sorority.

CLASSIFIEDS

All classified advertisements must be in by 12:00 p.m. day preceding issue. Prices are 40c one insertion, \$1.00 three insertions; 17 words or less. All words over 17 three for 5c for each insertion. Call Collegian 6711.

LOST

GREY topcoat at Sigma Pi Saturday night. Hager Bros. label Name tag inside left pocket. Call Brown 4332.
 PERSON who picked up wrong topcoat in Sparks Saturday morning call Fleming, DU or 2011. I have yours.
 GOLD GERARD Paraguay watch, Saturday night between Atherton and Tub. Call 5051, Ext. 290. Harvey Bean.
 PAIR of brown framed glasses in AGR House Saturday night. Call Harold Landis, 2401.
 WOULD PERSON who took wrong grey topcoat from Theta Xi call Frank Pokorny, 5051-277.
 LOST Saturday night, red velvet evening bag containing Elgin watch. Please call Pat, 407 Simmons.
 MY TOPCOAT exchanged Saturday at Pi Lambda Phi; Shear Clothcraft label, "Hellman" inside. Have your coat. Call Mike Hellman, 3204.
 1949 BEER MUG, A.T.O. crest and name "Hungry" on sides. Sentimental value. Please call Bearer, 2532.
 BLUE ZIPPER wallet containing cash and valuable papers between Bursar's office and Hort building. Call Reggie, 6340.
 BLACK FELT BAG. Glasses inside needed badly. Return immediately Student Union.
 PAIR GLASSES, rainbow colored rims in a black case. Call 162 Atherton.
 FRENCH RECORDS, complete language course on twenty double-faced records also dictionary and conversational manual. Call Scheidemantl 851.

WANTED

RIDE — to and from Boston, for Thanksgiving vacation. Call Hal 2526.
 RIDE TO BOSTON for Thanksgiving. Will share driving and expenses. Call Dave Orrell, Nittany Dorm 28-3. Phone 5051, Ex. 288.
 K. and E. log decitrig sliderule. Call 5051 between 6 and 9. Room 234, Simmons.
 A RIDE to Pittsburgh after 6:00 p.m. Thursday, 4959 — Omar Lerhman. Wednesday and Thursday.
 DRIVER WANTED: to Pittsburgh in time for game. Return Sunday, 6 to 8 p.m. Call 4115.
 FOR PART-TIME employment. Men students, with car, to represent national corporation in State College-Bellefonte area. There is also excellent opportunity for summer employment and full time work after graduation. Earnings limited only by ability. Write—stating qualifications including: Age, marital status, curriculum to Classified, care of Daily Collegian, Box 261, State College.

FOR SALE

GENUINE Erush Keurich Roth Violin. Double violin case, one bow, one Cre-

mona copy German violin. Separately or together. Contact S. K. Knies, 5051-288.
 AIR CORPS Jackets—waterproof, windproof, fur collar, wool lined. Swell for all winter. Only \$14. Call Wilker, 2941.
 1948 CHEVROLET Club Coupe, radio, heater, seat covers. 310 W. Nittany.
 1934 PLYMOUTH 4-door sedan. \$145. Joe Lohman - 201 Irvin Hall.
 1933 FOUR DOOR CHEVROLET. 423 Windcrest.
 SALE—1947-27 foot Zimmer house trailer, used 6 months, equipped for house-keeping, drapes, silver, dishes, etc. Duotherm heater, bottle-gas stove. Displayed rear 231 S. Atherton St. Call Ted 868 for appointment to inspect. \$1950.
 1947 BLACK CHEVROLET convertible. Excellent shape with all accessories, 12,000 miles, \$1950 Call 2082.
 1942 DODGE SEDAN fluid drive. Good condition. Good rubber. J. D. Magarjee, 223 Windcrest.
 1940 BUICK SEDAN with 1946 engine. Excellent condition. Phone 2419.

MISCELLANEOUS

MIMEOGRAPHING and expert typing done REASONABLE—term papers, theses, manuscripts. Secretarial Service. Room 205, State College Hotel, Above the Corner. Phone 4906.
 HEY GANG—Charity Bazaar at the Kapna Titha Theta House. Dec. 4, 2 p.m.-5 p.m.
 LASTING CURLS for any hair. Safe, quick, easy—Curly Head Capsules, 4 for 25c, Counter8, MURPHY'S.

Heard Tell?

The HARVEST BALL is going to be swell!!!



TICKETS

December 4
 Rec Hall — 8-12
 Swell Music
 Allen Snair 1.50
 (Tax included)

Harvest Ball
 SEMI-FORMAL

NOW AT YOUR WARNER THEATER

Cathann
 Edmond O'Brien
 Robert Stack
 "FIGHTER SQUADRON"
 In Technicolor

State
 Greer Garson
 Walter Pidgeon
 "JULIA MISBEHAVES"

Nittany
 Fred Astaire
 Judy Garland
 "EASTER PARADE"
 In Technicolor

Now is the time to buy

SPORT COATS
10% Off

A large selection of Sport Coats now on sale, including cardigans, and 2 or 3 button styles.

ANOTHER BIG OFFER by the

Young Men's Shop
 127 SOUTH ALLEN



Stormy Weather?

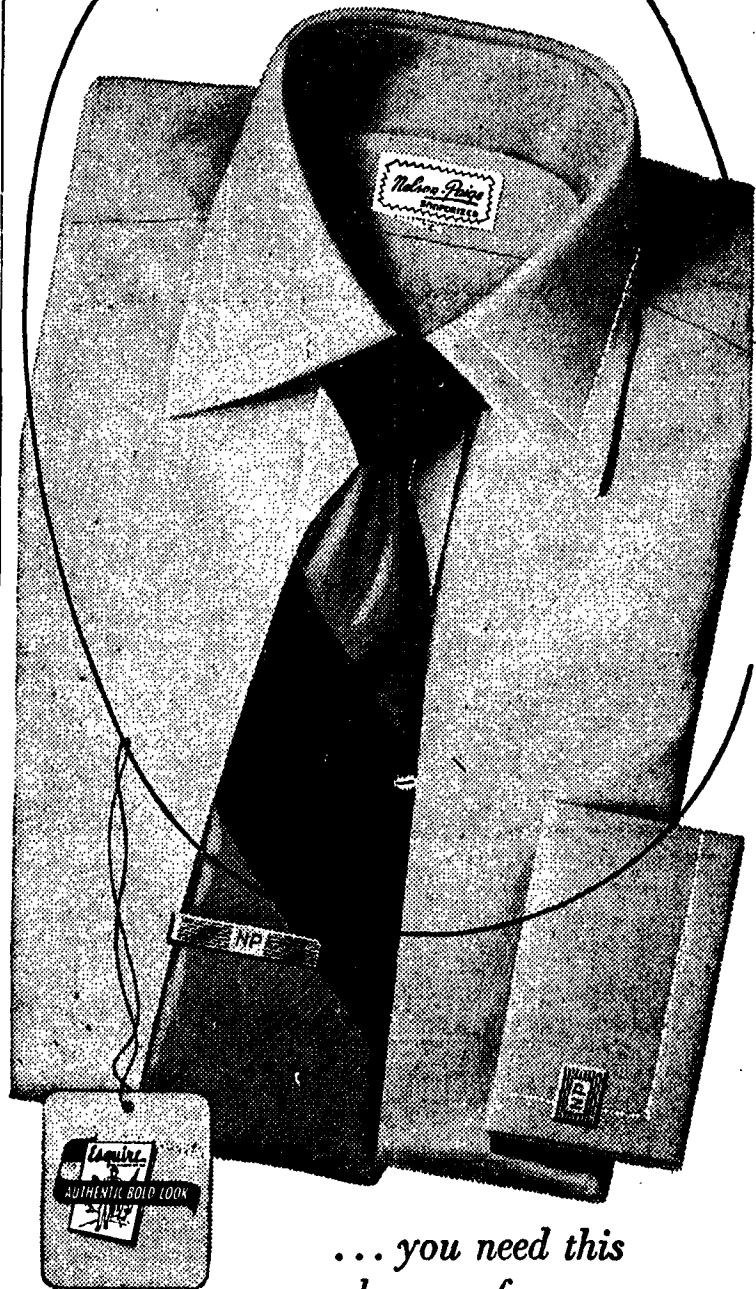
Now you can look your best, come rain or shine.

These smartly styled boots will give you all the protection you need against rain or snow and they'll keep you nice and warm. Priced at just

\$2.99

Glick's

In the best-dressed circles...



... you need this change of pace—

the **bold look** shirt



In Nine Glowing Colors

AQUA * WINE * MAIZE * WHITE
 BAMBOO * PINK * BLUE * TAN * GRAY

Best innovation in men's shirts since the days of the celluloid collar. Note the wide "command" collar, top-rated by Esquire Magazine. Note the half-inch border on collar, center seam, French cuffs. Sanforized (1% shrinkage) broadcloth. \$3.95

College Sportsweave
 ALLEN AT BEAVER
 PHONE 2898
 STATE COLLEGE'S FRIENDLY STORE