

## Campus Cliques To Hold Rallies

The two campus political parties will hold rallies Monday night to select candidates for sophomore class offices. Sophomore elections will follow after one week of campaigning which begins Tuesday.

The Lion party will meet in 121 Sparks at 7 p.m. Monday, and the State party in 405 Old Main at the same hour.

Unlimited nominations will be taken at the State meeting, after which voting representatives will vote on the nominees. Representatives must have "clique cards" before the meeting gets under way.

Lion candidates will likewise be elected after all nominations are made. Party members must attend two meetings to be eligible to vote.

State candidates previously named include William Dietz, Kenneth Rolston, and Jerry Sheehan, for president; Barbara Niesley and David Schmuckler, for vice-president; Robert Longenecker, for secretary-treasurer.

Nominees already listed by the Lions are Harry Kondourajian, Thomas McDermott, and Lewis Shallcross, for president; Lois Kenyon and Cyrus Sporkin, for vice-president; Barbara Brice, Martha Ericson, and Patricia Starrels, for secretary-treasurer.

## Steel Official Addresses ASM

Dr. D. L. McBride, assistant superintendent, Open Hearth Department, Bethlehem Steel Co. (Cambria Plant), will address the Penn State chapter of the American Society for Metals at its monthly meeting in the Mineral Industries Art Gallery at 8 p.m. Tuesday.

Dr. McBride will speak on "Steel Making." The lecture will be open to all interested.

While holding a Research Fellowship at Carnegie Institute of Technology, from 1931 to 1935, Dr. McBride worked with the Metallurgy Advisory Board on problems relating to the effect of deoxidation on physical properties and grain size. After receiving the degree of Doctor of Science, in June 1935, he entered the employ of Bethlehem Steel Co. as a research engineer. In September, 1938, he was transferred to the Cambria Plant as open hearth metallurgist, later becoming assistant superintendent of the Open Hearth Department of the plant.

## Horowitz Begins Twentieth Season

Vladimir Horowitz, world renowned pianist who appeared on January 6 as the second number of this year's Artists' Course, is starting his 20th concert season in the United States.

For many years, the Artists' Course committee, headed by Dr. C. E. Marquardt, has tried to induce Horowitz to appear at Penn State but without previous success because of his full schedule.

"His appearance here, along with those of Christopher Lynch and Helen Traubel makes this year's program the best in the history of the Course," said Dr. Marquardt.

Series tickets for the three numbers go on sale on November 9 for the students, and November 10 for faculty and townspeople, at the Student Union office in the lobby of Old Main.

Prices for the series are \$8.70 and \$7.50, tax included. If any are available, single admissions will be sold the evening of the performance at \$4.50 for Lynch and Miss Traubel, and \$5.00 for Horowitz.

## Noted Visitor

H. P. Hutchinson, chief of the field operations section of the Central Radio Propagation Laboratory, National Bureau of Standards, recently visited the College to discuss ionospheric radio propagation measurement problems.

# Dairy Queen Sets Milk Record

By Ray Benfer

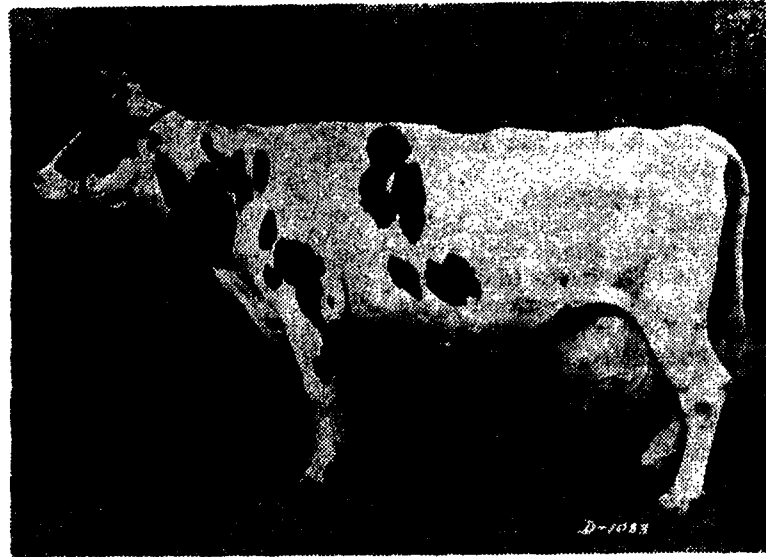
Let us for a moment envision—if your imagination will permit you to do so—a double line of milk bottles placed side by side from Recreation Hall to the Coliseum Roller Rink just to the east of town. If your mind can conjure up such a vision, then you have an idea of the amount of milk that our dairy queen, "Penstate Veeman Josie," produces in one year's time.

Or, if you would desire another yardstick, let us say Josie produces in one year enough milk to supply the entire student body with one quart each for the next ten days. And then, there would be a surplus. In the popular vernacular of the day, "that ain't hay!"

Because of her amazing production Josie was declared "the leading lifetime milk producer in the United States" by Leo R. Blanding of the advanced registry department of the Holstein-Friesian Association of America, based on records which she had chalked up by July 1.

Josie is nearing her 16th birthday and is doing better than, 50 pounds of milk, which means about 27 quarts daily, reported P. D. Jones, College herdsman. In the College herd there are 29 of her 38 living female descendants; including 4 daughters, 7 granddaughters, 9 great-granddaughters, and 9 great-great-granddaughters. Perhaps someday they may equal or surpass Josie's prowess.

No longer need we turn to Al Capp's world of fantasy and "shmoos" to solve the world's critical problem of feeding the hungry. At present Josie is not producing eggs, but perhaps she could be convinced to do so if we prevailed upon her. One thing is certain. We need more Penstate Veeman Josies!



MILK QUEEN

## News Briefs

### Business Candidates

A meeting of the Daily Collegian business candidates is scheduled for 9 Carnegie on Tuesday.

### IC on Government

The Intercollegiate Conference on Government will hold its reorganization meeting in 124 Sparks at 7 p.m. Tuesday. The conference is going to have a "Model State Legislature" at Harrisburg in April.

Temporary officers are to be elected at this first meeting announced Joan Hester, secretary.

### S.A.M. Meeting

The Society for the Advancement of Management will hold a short business meeting in 107 Main Engineering at 7 p.m. Tuesday. Applications for memberships will be made at that time. At 7:30 p.m., the society will adjourn to 10 Sparks for a joint meeting of the Engineering Societies sponsored by the ASME.

### Clover Club

Clover Club held its second meeting of the year in 103 Ag last night. A short movie, "Interesting scenes in Pennsylvania," was shown.

## Haller Speaker At Club Luncheon

Dr. George L. Haller, dean of the School of Chemistry and Physics at the College, was the speaker at the annual R. K. D. Club luncheon of the Mellon Institute of Industrial Research, University of Pittsburgh, on Tuesday noon. He spoke on "Television."

The luncheon is held to honor Robert Kennedy Duncan, first director of the Institute, who conceived the Institute's principles of industrial research.

## ROTC Band Names Miller, Rosen

Charles E. Miller has been named student conductor and Howard H. Rosen has been named drum major of the newly-formed ROTC band, of which Homer Savage, graduate student, is director.

The band plays for ROTC marches and ceremonies.

## Publishes Paper

A paper, prepared by Peter G. Sulzer of the Watson Staff project at the College, was published in the October issue of "Proceedings of the Institute of Radio Engineers." It was titled, "The Tapered Phase Shift Oscillator."

### To the Students of Penn State:

On behalf of the undergraduate Council it gives me the greatest pleasure to welcome you once again to Franklin Field. The enthusiasm and the sportsmanship evidenced whenever our two schools meet can excite a feeling of pride and joy over such warm-hearted cooperation and understanding.

It is then with the best wishes of the entire University of Pennsylvania student body that I give you renewed assurances of esteemed pleasure in knowing that our two schools are to renew their gridiron relationship this year.

We cannot wish you success nor would you expect it, but we do say, a warm welcome to the University Campus. You are with friends.

Sincerely,  
Charles P. Medley, Jr.  
Chairman  
Undergraduate Council  
University of Pennsylvania

## College Joins In Land Grant Group Session

Administrative officials and faculty members of the College will play an active part in the 62nd annual convention of the Association of Land-Grant Colleges and Universities in Washington, D. C., Saturday to Nov. 11. Penn State is one of the 52 educational institutions with the organization.

Dr. Lyman E. Jackson, dean of the School of Agriculture, has been designated as official representative of the College. Dr. Jackson is listed to address three of the association's four divisions during the sessions. He also is chairman of a special committee appointed to study the report of the President's Commission on Higher Education.

Dr. Ben Euwema, dean of the School of the Liberal Arts, will preside as chairman of the Division of Arts and Sciences. Dr. H. K. Wilson, vice-dean of the School of Agriculture will address the agricultural division on "Our Fundamental Responsibilities in Agricultural Instruction." E. L. Keller, executive assistant in Central Extension, is chairman of the engineering extension section to meet on Nov. 10.

H. P. Hammond, dean of the School of Engineering, Dr. Eric A. Walker, director of the Ordinance Research Laboratory, and Dr. Fred G. Heckler, director of the Engineering Experiment Station, will represent the School of Engineering in several sessions. Dr. Seth W. Russell, assistant dean of the School of the Liberal Arts, also will attend.

Dr. F. D. Kern will represent the Graduate School, and the department of home economics will be represented by Dr. Grace M. (Continued on page eight)

## Church Calendar

### Westminster Foundation

Student department meeting at 9:30 a.m. Sunday night at 6:20 p.m. Dr. H. David Rix will speak on the "Roman Catholic Church."

### St. John's Evangelical Church

Services: 9:30 a.m.—Morning worship with a sermon on the theme, "Mighty Acts of the Master," followed at 10:20 a.m. with Church School Classes. A special class for students is conducted by the pastor.

At 7:30 p.m. Vespers will be held with a sermon by the pastor, the beginning of a three evening study of baptism.

### Friends

Services: First Day School at 9:30 a.m. Sunday, followed at 10:45 a.m. by a meeting for worship. At 7 p.m. the Young Friends Group will meet with Ellen Stanley starting off with an introductory statement on the "Problem of the Divinity of Christ." Refreshments will be served after the evening meeting.

### Grace Lutheran

The Student Bible Class will meet at 9:30 a.m. At 6:30 p.m. the Rev. C. F. Lauer, Protestant chaplain from the Western Penitentiary, will speak to the Lutheran Student Association on the subject "Crime, Its Causes and Its Cures."

## Save Campus Trees, Osborn Warns Hearers

by Paul Eisenberg

"I am not in favor of a building when it involves the cutting down of trees," said Dr. Fairfield Osborn at the first session of the Community Forum Series last night. The program was held in Schwab Auditorium.

Dr. Osborn made his reference to the new campus buildings which are now being erected on the East Campus. "Trees are more precious than you think," he said. "I was greatly surprised to hear that they are putting up a building which involves cutting trees."

Speaking on the topic of "Our Plundered Planet," Dr. Osborn pointed out that "conservation is not yet realized by people in our country. Man doesn't need to ruin the land. The people of Northern Europe have learned that land is needed in order for them to exist."

### Population, Growing

He went on to say that the population of the world is growing each year. At the present rate of increase there will be 12 million more people living in the United States in 1960. This will lead to an unhealthy situation because we are making no effort to conserve our renewable resources.

Renewable resources, according to Dr. Osborn, are all plant life, animal life and marine life. Earth and water must also be thought of as taking part in these processes of renewing resources.

### Faculty Members

Two members of the faculty also spoke at the meeting. Prof. Herbert R. Albrecht, head of the department of agronomy, pointed out that Pennsylvania has one renewable resource, and that is the youth of the land.


"Since 1900, the production of any mineral or all minerals is greater than in all past history," said Prof. William M. Myers, chief of the division of mineral economics. Unless a way is found to conserve these minerals, the country will be out of copper, lead and zinc within 20 years.

Prof. Clarence R. Carpenter was chairman of the session. An audience forum followed the speeches.

## German Professor To Speak Monday

Dr. Herbert Steiner, associate professor of German at the College, will address the Faculty Luncheon Club on Monday noon at the Hotel State College. His subject will be: "Life with Corona."

Dr. Steiner for 10 years edited "Corona," which was a literary bi-monthly published in Switzerland.



**Resolve to Save Regularly**

Turn over a new page in your bank book and save regularly. It's the smart thing to do at—

The First National Bank of State College

MEMBER OF  
FEDERAL DEPOSIT INSURANCE CORPORATION