

## College Grads, Coeds Become Prominent in National Groups

Penn State coeds, recent graduates and undergraduates, are distinguishing themselves in national organizations of which they were a member in the local campus chapter.

At the summer convention of Chimes, newly formed national junior women's honorary, Mary Margaret Barnett, graduate of the class of '48 was elected 1st Vice-president in charge of convention.

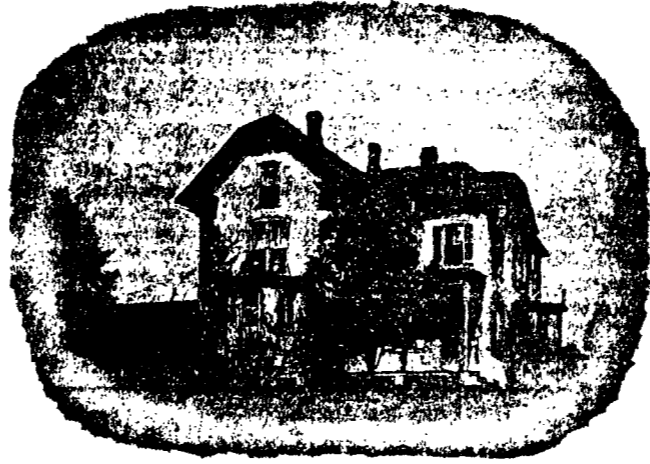
A physical education major, Miss Barnett was president of the local Junior Service Board, now Chimes, and was instrumental in bringing about the national honorary. On the campus Miss Barnett was active in WRA activities, and served as president of the WRA Swimming Club.

Barbara Brown, junior at the College, is editor of the Chimes Clapper, publication of Chimes. Miss Brown is a member of the Daily Collegian staff and the WRA rifle club. She belongs to the Gamma Phi Beta sorority.

Last spring, Mary Lou Waygood Foote, graduate of the class of '47, was appointed national president of Cwens, sophomore women's honorary.

Mrs. Foote was very active in her undergraduate days on the campus. She served on Cwens, Mortar Board, senior women's honorary and as president of WSGA Senate. She was president of Delta Gamma sorority and received the Quill Girl award as the girl who did the most for the College.

## Typical Sorority House



## We the Women

By Frances Keeney

By this time most of the junior and senior coeds have returned to their second home, glowing with suntans and packed with vigor, and to them the new sophs and the Daily Collegian hangs out the big "Welcome Back" sign.

Even though during the first few days the new coeds will probably be envious of the way the "old" gals seem to swoop down and take command of everything and everybody, this control will be short lived (it has so been proved in the past), and it will be a very short time before the new sophs and juniors stamp their trade-mark on this college campus.

In the few days they have been here, the new girls have made a fine impression on the faculty, administration, Orientation Week helpers, and last but certainly not least, the men. These sure-footed upper class women will have to start out on their toes!

### Plenty of Meetings

All week these new coeds have been subjected to meetings, rules and regulations of campus life, multi-campus activities, and so much information about the "mother school" that we wouldn't be a bit surprised if half of them are ready to pack up for the quiet, little school from which they came. On top of this, and registration, comes sorority rushing which begins this week. College can't help but appear as a jumbled mixture of Greek letters, alphabetical arrangements, and "do's and don'ts for College women."

### Soph Maze

Orientation workers realize that right now WSGA, WRA, IWA have no more significance to you Sophs than combinations in a mathematical equation, and that you know absolutely no difference between Alpha Beta Gamma and Zeta Psi Upsilon. But you are sophomores when you come to the campus and we want you to become acclimated to Penn State and to feel a part of this College just as quickly as possible.

Orientationers want to help you get out of your labyrinth just as much as you want to get out of it.

### Coeds Have Advantage

One interesting feature about this school is the male to female ratio, with figures leaning heavily on the coed's side. After careful calculations we have found the ratio this semester to be approximately 4.93 fellows to 1 blushing maiden, or one femme fatale to 4 fellows and 1 without a thumb! But coeds, please don't walk around campus looking for the unfortunate males without a thumb; it might be embarrassing for you as well as him.

After you find your 4.93 men, there are plenty of things you can do with them. A climb up Mt. Nittany is quite a necessity, as well as a look about campus from Old Main tower. A walk to the Ag Hill barns is particularly entertaining especially if you stop at the creamery for a big ice cream cone on your way home.

### 4.93 and You

If you have a camera, we would advise a hike to the Lion Shrine, and a snapshot or two of your 4.93 men. For those who are less ambitious, there are always bicycles to be rented in towns for trips through State College and College Heights. Horses are also available to those with riding ability.

(Continued on page fourteen)

## Chairmen Pick Up Registrants; Rushing Begins This Weekend

Sorority rushing chairmen will be allowed to pick up the list of sophomore and junior registrants in the Dean of Women's Office any time after 1 o'clock this afternoon, reported Adelaide Finkelston, Panhellenic president.

The chairmen can also secure the coke date blanks at the same time. Miss Finkelston stresses the fact that silent period will be observed until the first Open House 2 to 5 p.m. Saturday afternoon.

Information concerning the open houses was printed in the Monday and Wednesday issues of the Daily Collegian. This information is also available in the Panhellenic Handbook.

### Silent Periods

Strict silent periods will be enforced from 5 p.m. Saturday until 2 p.m. Sunday, and from 5 p.m. Sunday until 6:30 p.m. Sunday. There is also a silent period from 9:30 p.m. Sunday until 9 a.m. Tuesday.

On Monday, sororities will turn in their coke date cards to Panhellenic Post Office in the Atherton Hall lounge at 8 a.m. Rushes will pick up the cards from 9 a.m. until 12:30 p.m., and return them filled with the hours they care to give each sorority from 1 to 4 p.m. Sororities pick up the coke cards at 5 p.m. Girls interested in going sorority can register at Atherton Hall from 8 to 12 p.m. Monday.

During the scheduled silent

periods, Panhellenic Council allows Big Sisters to Talk and Visit their Little Sister, but the contact must not include any other girls.

### Rushing Chairmen

A meeting of the rushing chairmen and their alumnae is scheduled for 104 Old Main, 8:30 p.m. on Monday. The initial Panhellenic council meeting for the semester will be held in 418 Old Main, at 7 p.m. Tuesday said Miss Finkelston.

### Sorority Changes

There have been numerous changes of sorority locations on campus this semester. The eight groups with suites in Simmons have started to move into that building, and Grange Dormitory is open to the three sororities having suites there. The sororities who had suites in Atherton, and who have signed for ones in McElwain Hall, will be located in houses or suites vacated by sororities moving into Simmons or Grange.

The new sorority suites are almost entirely finished, but the large problem of suite telephones remains to be settled among Dean Carl O. Weston and the sororities.

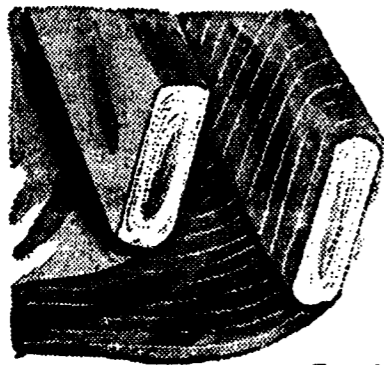
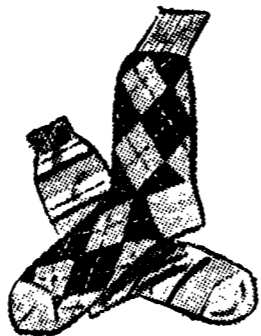


Finkelston

## COEDS!

Every coed can knit Argyle socks with a Bear-Brand Argyle sock pack. Nine beautiful colors and easy to follow directions too!

Also we have a complete line of wool for sweaters and socks.



Make your own skirts with our wool plaids and the new block plaids. You can whip our Botany, flannels, and crepes into flattering skirts and suits in no time—and just see how easy it is on your budget.

For dry goods and notions visit EGOLF'S, COLLEGE AVENUE

You will enjoy eating in State College's most modern and moderately priced tea room



Serving Luncheon 11:30 - 1:30  
Dinner 4:45 - 7:45

THE *Allencrest* TEA ROOM

We have a superb new assortment of **CONGRESS PLAYING CARDS** with the exclusive **CEL-U-TONE FINISH**



HANDSOME NICKEL FINISH \$1.00  
ENGRAVED GOLD-PLATE DELUXE MODEL \$2.00

*Ethel Meserve* Gifts and Interior Decorations  
NEXT TO THE CORNER • STATE COLLEGE

**FOR SALE**  
1937 FORD CONVERTIBLE  
Radio, Heater, Overdrive,  
Good Tires  
PHONE 6668

**ATTENTION TRI-DORM BOYS**  
Did you know board can be had 2 blocks from Tri-Dorms?  
**AG HILL DINING ROOM**  
207 E. Park Ave.  
CALL NOW AND MAKE YOUR RESERVATION