

Educators Praise Campus Beauty

"It's wonderful," was the consensus of out-of-state graduate students who are now enrolled in the Pennsylvania Workshop. The 135 educators represent public schools from Vermont to Florida.

"I'm crazy about Penn State," said Miss Ann Gilkey of Miami, Fla. A native Pennsylvanian, Miss Gilkey felt as if she were coming home when she came to the campus, which she considers one of the most beautiful she has ever seen. Commending the friendly attitude of students and faculty, she added that the College is much like Florida Southern College and Miami University in its campus activities.

Taking exception to the common accusation that Southern colleges are inferior to those in the North, she contended that the scholastic standards of established Dixie schools compare favorably with Northern ones.

A Greenwich, Conn., representative, Miss Elizabeth Kilcolins, agreed with Miss Gilkey's opinion of the campus as one of the most beautiful she had seen, adding that she would compare the College favorably with Columbia University.

Another Floridian, Miss Katherine McGibben of Coral Gables, drewled that she liked everything but the walking. She too commented on the friendly atmosphere and the beautiful campus.

Miss Ethel Smith of Washington, D. C., also had words of praise for the College. Previously enrolled here for graduate work, she stated that she considered it "a very good school or I would not have come back."

Robert H. Long, Poultney, Vt.'s representative, disagreed with the feminine members of the workshop. He considered Penn State too large to permit students to become acquainted with faculty members although he considered the atmosphere conducive to summer study.

Arthur W. Hartung of Martin, Tenn., commented favorably on the College's high standards, progressive program and building projects.

Froth Pinnings

Marriages, engagements and pinnings which have occurred since June 1 may be announced in September Froth if mailed to Penn State Froth, Box 845, State College, by August 1. Include sorority or fraternity affiliations and dates of marriages.

Home Ec Grad At Indiana U.

Alta L. Hummel, a graduate of the College, has been made food manager of the Indiana Union at Indiana University. In her new position she will have general charge of the preparation and serving of a daily average of 2500 meals at the center of student activities on the campus of the Hoosier state school.

Miss Hummel has been instructor in institutional administration at the College, where she received BS and MS degrees in institutional administration. In 1943-44 she was production supervisor in the food department of the Indiana Union.

Dr. Glenn Writes Health Article

Comparative studies in tuberculosis and histoplasmosis among the 2000 students who entered the College last fall are reported in an article in the May issue of the Journal-Lancet, magazine for the medical profession.

The article, prepared by Dr. Herbert R. Glenn and Dr. Edgar S. Krug, of the College Health Service, reports that the incoming class of 2152 students did not have a single case of active tuberculosis or tuberculosis disease.

Cigarettes

\$1.39 per cin., plus 19c postage

All Popular Brands
5 Cartons Minimum Order

Send Checks or Money Order
Clearview Sales Agency
Dept. P-3
17 Clearview Avenue
Wilmington 278, Delaware

A Pretty Face Sways Justice

The susceptibility of State College townspeople and students to a pretty face was made evident these past two weeks as nine out of 11 juries judged the lovely Karen Andre not guilty of the murder of Bjorn Faulkner in Town and Nine Players' courtroom drama, "The Night of January 16."

Only one jury, composed of seven women and five men, found the defendant guilty as charged. On Monday, the closing night of the show, a hung jury was unable to reach any verdict and Karen, as played by Jane Staus, was released on bail.

Members of the group which handed in the lone "guilty" verdict are Mrs. Helen Adolf, Mrs. William Goldberg, Bub Graham, Dr. George Lott, Herbert McCollom, Mr. and Mrs. J. G. Rayback, Mrs. Helen Seashore, Julianne Seashore, Mrs. William B. Somers, Len Stein, and Bette Troxell.

Color Print Exhibit In Main Eng

Color reproductions of more than 1000 famous paintings will be shown in 306 Main Engineering tomorrow by Francis H. Robertson, president of Artext Prints, Inc.

Reproductions of old and modern paintings, including post-war color prints recently received from Italy and France, are included in the collection.

One hundred nineteen students were enrolled for the first session of the College.

Harry Truman Joins Freshman Class Of Penn State

Harry Truman has been admitted to the freshman class of the College.

Dean of Admissions William S. Hoffman said he had assigned the new enrollee, an 18-year-old graduate of Uniontown Senior High School, to Clarion State Teachers College for his first year.

His full name is Harry J. Truman and he will study commerce and finance.

Race Segregation Is Lecture Topic

Problems of segregation and helping citizens to know their neighbors were outlined by Mrs. Mildred Moody Eakin, professor of Religious Education at Drew Theological Seminary in Madison, N. J., in a Pennsylvania Workshop lecture.

Under the topic "Knowing Our Neighbors," Mrs. Eakin used movie slides to show the teachers and administrators work being done in the demonstration school at Drew which trains teachers for church and religious education in schools. Children from Madison attend sessions and recently, classes were started for parents.

Main objective of the school is to aid the boys and girls and the parents of the community in becoming acquainted with other races and religions. Members of all races and religions attend the classes together.

CLASSIFIEDS

All classified advertisements must be placed before 3 p.m. on Mondays preceding issue. Rates are 50c per insertion of 17 words or less, 3c per additional word. Call Collegian 6711.

WANTED

STUDENT with sedan interested in part time work on good commission basis. Must be in school this fall. Call 4438.

TYPING OF TERM papers, reports as these done promptly. Secretarial service. Rm. 205 State College Hotel. Ph 4906.

FACULTY MEMBER wants ride to West Coast after August 6. Call Ira Brov at 2975 afternoons.

MISCELLANEOUS

PRIVATE French lessons and conversational lessons during main and recessions by College instructor from France. See Madam Fawkes, 708 Wincrest or call 4970.

PICNIC LUNCH boxes punch, birthday cakes, and other cakes, sandwiches. Frida Stern, 122 Irvin Ave., State College 4818.

FOR SALE

ZENITH PORTABLE RADIO, electric battery, good condition, \$25. Call 671 extension 26—1:15 to 5:30 p.m.

BE SURE TO VISIT Schlow's Sale for special values.

EMERSON PORTABLE RADIO — \$2. Call Frenchie 851.

ALL SUMMER DRESSES REDUCED. Schlow's Summer Clearance.

1941 WILLYS 4-door sedan, good condition. Make offer. Trailer 800 Wincrest.

TAINT GLASS, taint hot. Just ain't no use for it. Real diamond engagement ring (unengraved). Lew, 6711, extension 380.

BARGAINS at Schlow's Summer Clearance. —Opens today.

FOUND

LADIES' SHOES at bargain prices. Schlow's Sale.

In the early 90's haircuts on fourth floor Old Main were 5 cents.

Kaye's Korner

- Kold Kuts
- Hot Weather Specialties
- College Creamery Dairy Products

Beaver and Allen

SEE ...

PENN'S CAVE

AMERICA'S ONLY
ALL-WATER CAVERN

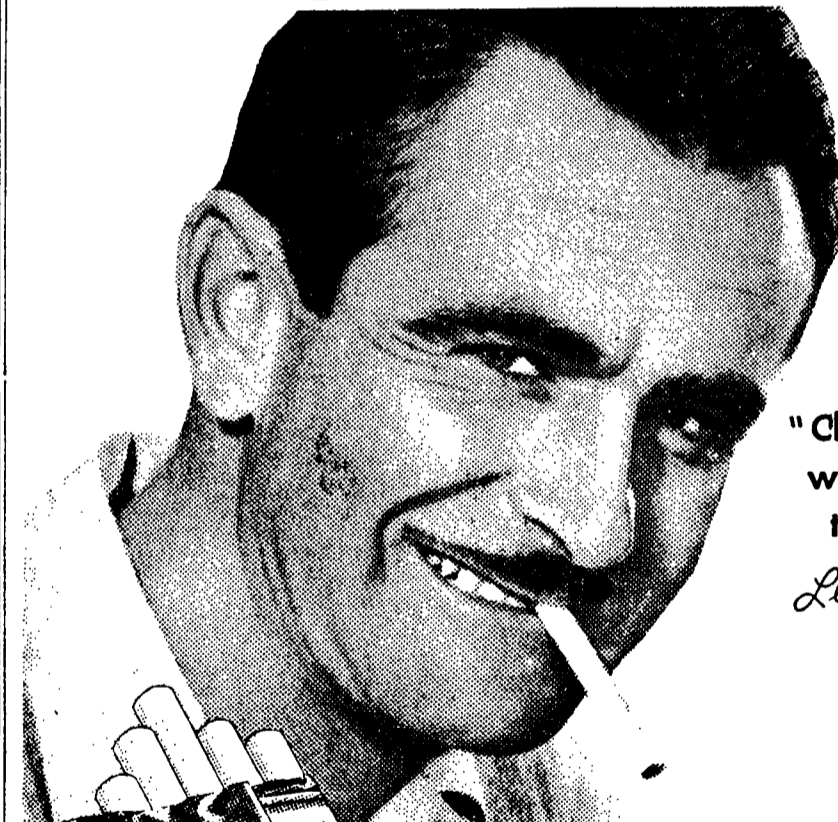
18 MILES SOUTHWEST OF STATE COLLEGE
JUST OFF ROUTE 45

OPEN 9 A.M. TO 9 P.M. DAILY

NATION-WIDE SURVEY

SHOWS THAT MORE COLLEGE

STUDENTS-SMOKE CHESTERFIELDS THAN ANY OTHER BRAND



"Chesterfield wins with me because they're Milder"

Lloyd Mangrum

OUTSTANDING PROFESSIONAL GOLFER

WHY... I smoke Chesterfield

(FROM A SERIES OF STATEMENTS BY PROMINENT TOBACCO FARMERS)

I like to sell tobacco to Liggett & Myers because they buy the best mild cigarette tobacco for Chesterfield and pay the top price.

I've been smoking Chesterfields ever since I started raising tobacco. I know they're made of mild, sweet tobacco.

J. Hogan Ballard

TOBACCO FARMER
BRYANTSVILLE, KY



ALWAYS BUY **CHESTERFIELD**
A ALWAYS Milder BETTER TASTING COOLER SMOKING