

Engagements

Ellenbogen—Blicher

The engagement of Doris Blicher of West Palm Beach, Florida, and Stan Ellenbogen of New York was announced on Christmas Day. Miss Blicher, Sigma Delta Tau, is a fifth semester commerce and finance student. Her fiance, a member of Zeta Beta Tau, is seventh semester dairy husbandry major.

Sciber—Martin

June Martin of Philadelphia and Merle Sciber, Sigma Alpha Epsilon pledge, also of Philadelphia announced their engagement during Christmas vacation. He is a third semester aeronautical engineering student.

Stickel—Betts

Announcement was made during the Christmas holidays of the engagement of Arloa Betts, Kappa Kappa Gamma, and Richard Stickel, Sigma Alpha Epsilon. Miss Betts is a senior in home economics.

Abernethy—Haggerty

The engagement of Eleanor Haggerty and Edward Abernethy, Pi Kappa Alpha, was announced recently. Miss Haggerty is from Philadelphia.

Stuebing—Rile

Eloise Rile, Delta Gamma, and Warren Stuebing, Pi Kappa Alpha, announced their engagement over the holidays. Stuebing is also a member of Skull and Bones and Druids.

Musser—Alderson

Announcement has been made of the engagement of Marian Alderson of Pittsburgh to Theodore William Musser of Snow Shoe.

METHODS, STUDIES AND SOLOS

For All Instruments

and

Popular Sheet Music

Available at

The Harmony Shop

- Buescher Instruments
- Emerson Table Radios
- Harmonicas

135 S. FRAZIER ST.



REV. NEWCOMER

will speak on

"Adequacy of Christ"

at the

Sunday Evening Service

—Also—

Election of Officers

Tuesday Evening

at 7 O'clock

Pan-hel Sets Greek Limit

A law forbidding any other sororities from locating on the College campus within the next two years was passed by the Pan-Hellenic Council sorority governing board, recently.

An exception to the above ruling was made for Sigma Kappa, national sorority, who has expressed a desire to form a chapter here. This sorority will have to remain local, Pan-Hel decided. This ruling was thought necessary because of the small ratio of women students on campus to the amount of sororities already located here, and because of the limited living quarters to accommodate the sorority chapters.

Pan-hel and IFC were selected by the publishers of "Great Greeks on American Campuses," a publication designed to honor outstanding fraternity men and women, to submit leading Greek students on this campus for publication in the booklet.

All the sororities have been asked to hand in six names of leading sorority girls on the campus, and the 15 girls with the most votes will be sent to this publication.

Phi Kappa Sigma

On Monday night, January 12, the Phi Kappa Sig elected the following officers for the spring semester: Ray Britton, president; Bill Borland, 1st vice-president; Jim Reinsmith, 2nd vice-president; Bob Thomas, treasurer; Norton Marshall, secretary; Fred Bliss, pledge master; Dave Binns, corresponding secretary; Tom Monahan, historian; Sam Eyer, house manager; Norm Marlin, caterer.

Gamma Phi Beta

The Gamma Phi Beta sorority will hold its annual square dance party at the Ski Lodge tonight for members and their guests.

Beta Sigma Omicron

Beta Sigma Omicron held a semi-formal Snowflake Fantasy dance at the Delta Sigma Phi house January 10 in honor of new initiates and pledges.

Marjorie Land was recently pledged to Beta Sig.

Alpha Chi Omega

Marjory Watson has been initiated into A Chi O.

Delta Gamma

The Delta Gammas entertained their dates and alums at a theater party Saturday night when they attended the Penn State Players' production of "Out of the Frying Pan."

At the weekly sorority meeting, Mrs. Helen Galbraith, associate professor of applied arts, spoke on sectional furniture.

Alpha Epsilon Pi

Alpha Epsilon Pi elected Leon Beratan master for the coming semester Thursday night. Others chosen were Ramon Garfinkel, lieutenant master; Harold Gittlen, scribe; Gerald Marmorstein, exchequer; Bernard Kaplowitz, corresponding scribe; George Des-sauer, sentinel; Charles Teitelman, member-at-large; and Leon Lock, house manager.

Tau Kappa Epsilon

A dance in honor of graduating seniors will be held by TKE at their chapter house on Saturday. The George Olinger Combo from Harrisburg will furnish music for the dance.

IWA Sponsors Box Social

Independent Women's Association will entertain the men of Nit-tany Dorms at a box lunch social in Grange dormitory playroom, 2 p.m. tomorrow.

Hank Glass, noted Thesopian, will emcee, and auction off the boxes. He will present an act which has never been seen by the students.

Any independent woman wishing to attend should prepare a box lunch for two, with her name inside, wrap it attractively and bring it with her to the party.

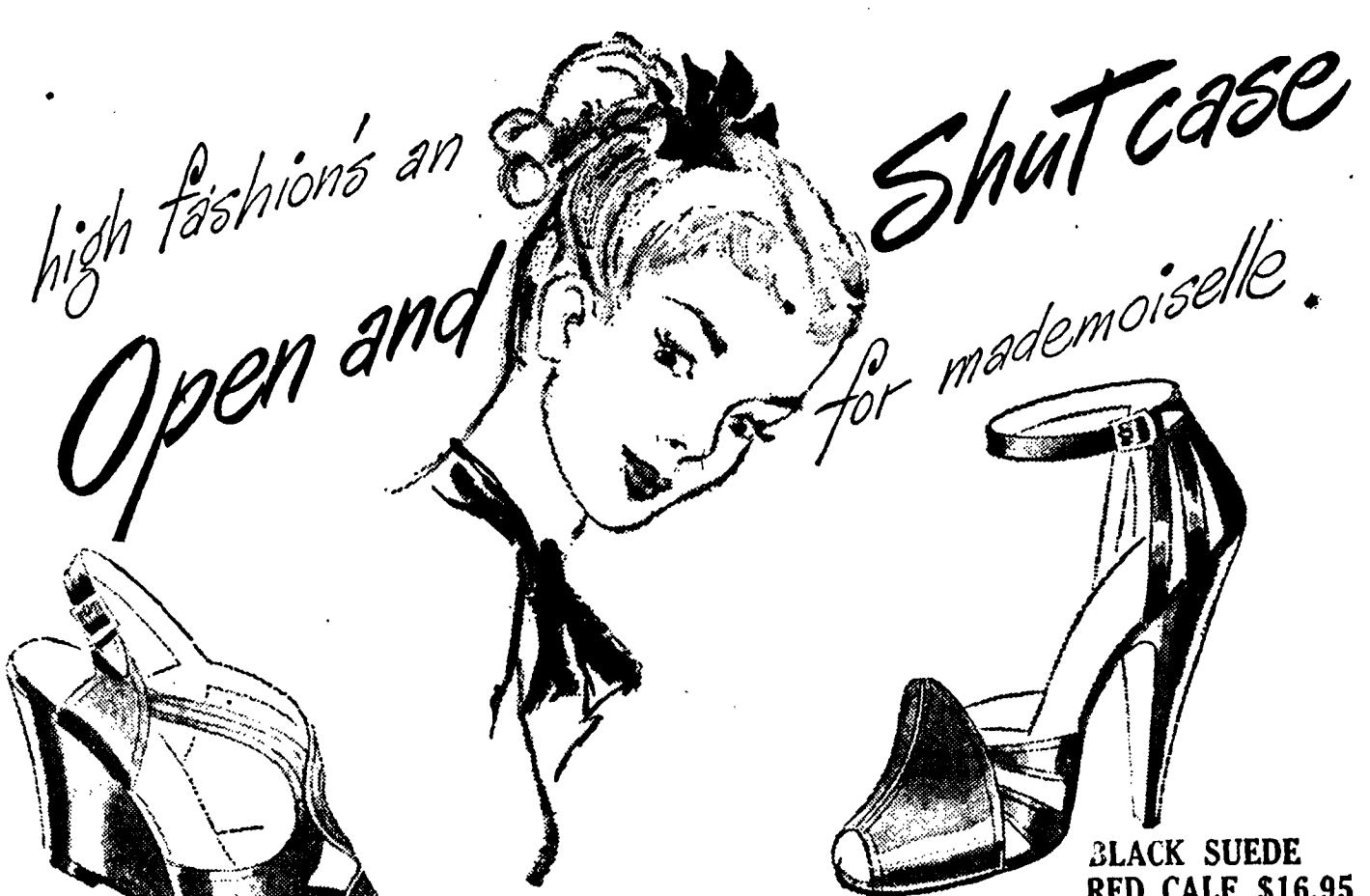
The affair is being given because of the enthusiastic response given to a recent party for Pollock Circle men, according to Sylvia Schenfeld, social chairman. Miss Schenfeld hopes IWA can supply a source of afternoon mixing for men who have no advantage to entertain at their dorms.

Phi Mu

The Phi Mus are pin pledging Kathy Mitchell tonight.

Sigma Delta Tau

Miss Dulcy Pepinsky, regional adviser of the SDTs, will be entertained at a tea in Atherton Hall from 3 to 5 p.m. Saturday.



BLACK SUEDE RED CALF \$16.95



BLACK SUEDE RED CALF \$16.95



BLACK PATENT BROWN CALF \$15.95

Under cover and/or out in the open... how will you have your new Mademoiselle look? Come choose from shoes with a toe on show... an instep a-whirl with straps... or heels that dare to bare or close demurely. Definitely, for the young and young in heart. mademoiselle, you'll love to be in our shoes.



CHARLES SHOP FOR WOMEN

S. ALLEN ST.

STATE COLLEGE