

Student Assists Players' Director

Frank B. Palmer, Jr., a seventh semester student at the College, has been appointed stage manager and assistant director of Players' first Schwab show of the spring semester, "Three Men on a Horse," by the director, Warren S. Smith.

This is the first time that such a responsible position has been placed in the hands of a student, said Smith. Palmer will be in complete charge of the production and will act as general coordinator of the show.

Heads of the crews whose names were released by Palmer are William Bensch, lights; Carolyn Coon, properties; Gerald Gilman, sound; Phyllis Harkin, paint; Lois Hartwick, make-up; Donald Little, construction; Margaret Stridinger, advertising; and Florence Zalocovitz, costumes.

Although all crew members have not yet been chosen, members of the construction and paint crews were released by crew heads. The construction crew includes Marilyn Badger, Doris Ballantine, Marcia Baum, James Cuzzolina, Oscar Fleisher, Marianne Gailey, Janet Gustafson, William Obzul, Lou Olsen, and Steve Perialas.

Members of the paint crew are Marjorie Gorham, June Kratz, and Rose Marie Mulvihill.

The College plant, containing over 60 buildings, has been evaluated at over \$22,000,000.

Temporary Student Union Opening Set for February

The new Temporary Student Union building, now almost completely constructed, will definitely be open for operation on February 16, George Donovan, Student Union general manager, said yesterday.

Mr. Donovan said that this building will not completely meet all desires, but that at least it is a good start in the right direction.

Included in the building is a soda bar, three lounges, a dance hall with a capacity of 300 persons, a game room with four table tennis tables, and other facilities. Afternoon dances will be held, he said, on Monday through Friday from 4 to 5 p.m.

There will be classes in dancing, bridge and table tennis. Mr. Fred Coombs, associate professor of physical education and his classes of community recreation will assist in the recreation program.

Mr. Donovan said that the hours of operation are, Monday to Thursday, 8 a.m. to 10 p.m.; Friday and Saturday from 8 a.m. to 1 p.m.; and Sunday from 2 p.m. to 10 p.m. These hours of operation have been approved by Deans Weston and Warnock, he added.

The Student Union building will maintain a full time staff from 8 a.m. to 4 p.m. and from then on it will be serviced by students.

"A special vote of thanks should go to the Board of Trustees for their part in the building of this student facility," he said; "also to Mr. Samuel K. Hostetter, assistant to the President in charge of Business and Finance, Mr. Harold Loman, purchasing agent for the College, and Mr. George W. Ebert, superintendent of Grounds and Buildings."

VA Lists Steps For Transfers

Veterans desiring to interrupt training between semesters to conserve remaining entitlement, or transfer to a different training institution at the end of this semester should contact the Veterans Administration training office at once.

Robert Stroud, the training officer in charge, said that by interrupting training for the period from Feb. 1-8, veterans can conserve eight days of entitlement.

Veterans who wish to transfer to another training institution at the conclusion of the current semester should contact the training officer at once in the Old Zoology building. Arrangements may be made for issuance of a supplemental certificate of eligibility and transfer of records.

Also, Mr. Proud requests that those veterans who have not received subsistence allowance should report to the training officer, so that a special inquiry can be made.

The College library has copies of fraternity magazines in its periodical room on the main floor of the library.

Pre-Registration Totals 7059 for Spring Semester

A total of 7059 students are enrolled at the College for the second semester, according to unofficial first phase registration figures released by the scheduling office. This is a decrease of approximately 1100 from first semester totals.

Ray V. Watkins, scheduling officer, attributes the drop in enrollment to failures, graduations, and the fact that these are merely first phase figures. Final registration in February will raise the total considerably, he believes.

Largest registration was in the School of Liberal Arts, which enrolled 1707 students for the second semester, compared with 1961 for the first. The School of Engineering ranked second in number enrolled for the next semester, with 1556. This was a drop of 179 from its first semester total.

Third largest registration was in the School of Education, where 1181 enrolled, against 1075 in the first semester. This is the only school of the College which showed a gain in registrants over the first semester.

The School of Agriculture enrolled 1020 for second semester, a decrease of 119 from last September's figure.

Other totals, with second semester and first semester listed in that order, are School of Chemistry and Physics, 700 and 772; School of Mineral Industries, 312 and 379; School of Physical Education, 236 and 266; graduate students, 278 and 745.

Further breakdown of second semester enrollment figures shows, in the School of Agriculture, that forestry received the largest registration, 206, and botany the smallest, five students. Chemical engineering leads the Chemistry and Physics School, with 290 enrollees.

In the School of Education, 384 registered in education, 268 in home economics, and 173 in psychology. Among engineering students, electrical tops the list with 412.

Liberal arts registration is divided into arts and letters, which

enrolled 753, commerce and finance, with 718, and journalism, which signed 235 students.

With respect to the proportion of students in the various departments, second semester figures closely parallel those of the first semester.

Registrants classed as "fourth semester" are most numerous, totaling 2332, while sixth semester undergraduates number 1688, and eighth semester students make up the third largest group, with 1445. Only 48 completed first phase registration as third semester students.

Sororities—

(Continued from page one) final arrangements will be made later.

The basic furniture, which will be provided by the College, will be decided upon by Mr. Loman's office with the advice of an interior decorator. Suggestions of the sororities will be considered.

In order to facilitate the arrangements for these suites, Mr. Lowman and Miss Smulyan expressed a desire that all questions and problems which could be settled at this time should be discussed at the meeting. Plans for the chapter rooms to be included in the new dormitories must be completed as soon as possible since the opening for these dorms is set for the coming fall.

Astronomer Speaks

Dr. Roy K. Marshall, director of Fels Planetarium in Philadelphia, and research astronomer at the University of Pennsylvania, will be the guest speaker at a joint meeting of Sigma Xi, science honorary, and Alpha Nu, astronomy honorary, in 121 Sparks at 7:30 o'clock tonight.

Women's Clothes are

THEIR OWN

TESTIMONIALS

Fashion and wearability—the qualities that win or lose customers—are carefully regarded by women when they choose their clothes.

Because of the importance of fashion in the economic and social scheme, a knowledge of style, quality and value is an inherent part of the average woman's shopping equipment.

Manufacturers in the women's fashion industries must therefore stand or fall on the consumer reaction to their merchandise. Testimonials have no value in selling fashions. The goods must be delivered.

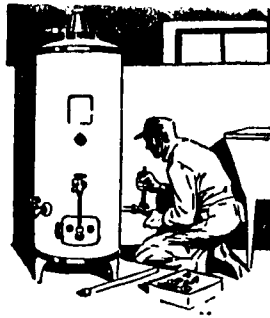
Introducing

The Women's and Children's Wear Industry
to
THE AMERICAN COLLEGIATE PUBLIC

A series sponsored by "Women's Wear Daily," a Fairchild Publication, 8 East 13th St., New York 3, N.Y.

Home Is Where You Hang Your Hat . . .

Will your hat rack stand, or is it in falling shape? Does your house need REPAIRS, PLUMBING or PAINTING . . . check O. W. HOUTS hardware supplies and look at the PITTSBURGH PAINT selections.



Your college home needs the best of care. House Managers and Trailerites see the BROOMS and BRUSHES, RUBBER MATTING, and FLOOR WAX.

It will pay you to buy your appliances from a substantial firm like the O. W. Houts Co.

See the new: KAISER DISH WASHERS, ELECTRIC WATER HEATERS, OIL BURNERS

The best in COOKING UTENSILS can be found at the Houts Hardware Store; both aluminum and enamel are available.

Solve your household problem today with a call to the Houts Co. Phone 703.

O. W. HOUTS

LUMBER and HARDWARE COMPANY

W. College Avenue
4 Blocks From Stop-Light
At Atherton Street

Free Parking Phone 703

GENUINE Orange Blossom

CRAB TREES

State College Jewelers

Engined, Crafted in America's Community

AT PENN STATE

Robert E. Hirsh

smokes
CHESTERFIELDS

ROBERT SAYS:

"I've compared many types but by experience it's Chesterfields that satisfy me."

A nation-wide survey shows that Chesterfields are TOPS with College Students from coast-to-coast.

Important Transportation Notice

Penn State students using Greyhound Service during the mid-year recess are requested to make advance reservations during the period Jan. 23rd through Jan. 31st.

Reservations will be made with the purchase of your ticket 10 HOURS in advance of your intended departure time.

FOR ADDITIONAL INFORMATION AND TICKETS
CALL AT THE GREYHOUND POST HOUSE
PHONE 4181

WEST	NORTH	EAST
1:08 A.M.	1:04 A.M.	1:10 A.M.
6:38 A.M.	6:44 A.M.	7:00 A.M.
1:33 P.M.	12:49 P.M.	1:25 P.M.
6:48 P.M.	6:24 P.M.	6:30 P.M.