

Wrestlers Face Princeton As '47 Mat Season Opens

Coach Charlie Spiedel's 1948 edition of the Penn State wrestling team will meet Princeton tomorrow night in Rec Hall in the opener for both squads. The match is scheduled to get underway at 7 p.m.

Coach Spiedel has decided on his starters in all but two weight classes, 128 and 155 pounds. Leo Noker, Cryder Mattern, and Bob Shadley are still in the running for the 128 pound division, while Captain Ernie Closser and Cec Irwin are vying for the 155 pound berth.

Georgie Shautz, a veteran from last year's combination, will wrestle in the 121 pound class, while two newcomers from Lock Haven Teachers, Don Arbuckle and Jim Maurey, grappling in the 136 and 145 pound classes, respectively. Maurey won the State Teachers College title in the 155 pound class and the Inter-State Wrestling Tournament in Cleveland, Ohio, at 145 pounds last year.

Bob Hetrick and Bill Corman are other neophytes to the squad who will start. Hetrick will start at the 165 pounds, while Corman is the 175 pounder. Corman was also a State Teachers College champion, copping the 165 pound in last year's tournament.

Veteran Wally Chambers will

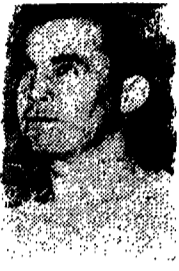
represent the Lions in the unlimited class. Chambers fought in the 175 pound class last season.

Several changes have been made in the rules and scoring regulations this year. There will be no overtime bouts, either in dual meets or tournament competition. In addition, time advantage does not start until a man earns a "takedown," "reversal," "near-fall," or is placed underneath due to a penalty.

This will be the fifteenth match between the two schools, the Lion grapplers holding the edge with ten wins. The Tigers have triumphed three times, and one match has resulted in a tie.

Princeton's last win came in 1941, although the teams have only met three times since that time. They did not wrestle each other from 1943 until last year.

State squeezed out a 14-12 win over the Tigers last year. Don McKeeby's fall proving to be the winning margin. Both Schautz and Chambers will be out for revenge tomorrow night, for last year they were both defeated by their Princeton opponents.



SPIEDEL

French Tries Hard But Neiman Tops Collegian Yogis

Although handicapped by a misty crystal ball, Ben "Swami" French, Collegian football forecaster, predicted six out of six New Year's results faultlessly to cause his season percentage to burgeon to a new peak (for him, at least), .671. His three yogi cohorts, submissively cried, "Kam-erad."

In the final summation, however, it was Jim "Braintrust" Neiman who copped the year's top spot among the swamis by breezing through the bowl games with just one miss. TCU's defeat by Mississippi, to set a lusty season mark of 59 right and 17 wrong, or a percentage of .776.

Asked to confirm a report that he trekked weekly to the rare climes atop Mt. Nittany to make his selections, Neiman exploded a vehement "No!" and insisted that his success was due entirely to "Solomon-like decisions after extensive perusal of voluminous gridiron records." Other crystal-gazers maintain, however, that he used an unfair implement—a two-sided coin.

French's prime effort in the final week still did not lift him from last place in predictor standings, as Pete Warker "saw" five out of six bowl results to finish in second place with 54 right and 22 wrong for an average of .711.

Sports Editor Ted Rubin barely edged out French (51 right and 25 wrong) when, in a "lucid" moment, he forecast four bowl upsets which never occurred. He chalked up a total of 52 right and 24 wrong, or a .684 mark, and was last heard decrying the "vagaries of grid warfare caused by a freak bounce of the football."

After losing to Penn State, Washington and Jefferson hit the win column with three straight victories to gain a 4 win, 1 loss mark.

Durkota Signs With Browns; Suhey May Become Steeler

By Tom Morgan

Plans for extending grid careers to the professional football ranks were revealed yesterday by several key Lion gridmen whose collegiate playing days ended with the recent campaign.

Already signed, sealed and ready to be delivered to the Cleveland Browns next season is the Blue and White's top scoring package, 205-pound wingback Jeff Durkota. The crack Cleveland club captured the rugged Colver, Pa., back in opposition to the championship Philadelphia Eagles of the rival National Football Conference, who had also drafted him.

In Durkota, the Browns sought an excellent defensive halfback and came up with one who will also fill the bill on offense. He will add much to the Cleveland backfield which now boasts such greats as Otto Graham and Marion Motley.

Coached by Paul Brown, exponent of the "T" formation, the Browns have now annexed the All-America Conference diadem in the league's first two years in operation. Durkota entertains high hopes of finding a place in the '48 Cleveland attack.

DRAFT SUHEY

All-American guard Steve Suhey, from Cazenovia, N. Y., expects to "take a whack at pro ball" next season with the Pittsburgh Steelers, who drew his name in the National Football Conference player draft.

Although Suhey has not signed a contract, the time is ripe for dickering between pro teams and prospective players.

Hailed as "one of the greatest linemen in State history," the popular Nittany guard of '41, '42, '46 and '47 prefers the single wing attack, which is practiced by Coach Jock Sutherland's Steelers. Although he has finished his football eligibility, Suhey has two more semesters of college to com-

plete because war service interrupted his schooling following the '42 gridiron season. He said, "I plan to finish college, however, during summer and spring sessions between football seasons."

SEEK NOLAN

Definitely in line for a pay-for-play football contract is John Nolan, star tackle on the Lion eleven, whose draft rights are held by the Boston Yanks of the National loop and the Chicago Rockets of the All-America league. Not signed as yet, the 228-pound giant from Glens Falls, N. Y., hopes to spend "a few years" in the pro game.

As yet undecided on a professional grid career is John "Shag" Wolosky, Lion center who has been contacted by "one or more professional teams." Like Suhey, the Nittany lineman from Brownsville, Pa., had his schooling interrupted in '42 and will finish his sixth semester in June.

Not available for comment was John Potsklan, Blue and White end, who reportedly "might play pro ball if the right offer comes along."

IM Bowlers Halfway

First-half winner in the IMA Bowling League will be announced January 15, the date on which the first half of the bowling season will be completed, according to Frank Tidona, president of ISC.

Second-half competition will begin the first week of the spring semester. Any team desiring to drop from league play before the second half begins should contact Frank Stoner.

New Coach

Penn State's varsity swimming team will be in new hands this season. Bill Gutteron, former Clearfield High School and Bellefonte Academy football coach, is the newly-appointed swim coach.

IM Office Cancels Monday Cage Tilts; Schedules Eighteen Games Tonight

All IM cage contests scheduled for Monday night have been cancelled because of the grid testimonial dinner being staged at Rec Hall on that night, Eugene C. Bischoff, director of intramural sports, said last night.

The scheduled games will be played off on a date to be announced later in the season. Tonight's schedule lists 18 games, the largest card arranged this season. The banner program, which begins at 7 p.m., will feature several tilts with great bearing on the title races.

Highlighting the evening's competition are the clashes between the undefeated Coal Crackers and Beerers in independent league "E," and Phi Sigma Delta and Sigma Nu in fraternity league "F." Both the Crackers and Beerers quintets boast three straight tri-

umphs, and tonight's game will decide the undisputed league leader.

Sigma Nu, with a record of three wins and no losses, will attempt to repulse the threat of a Phi Sigma Delta cage squad that has amassed two victories without tasting defeat.

Other important meetings find Marilyn Hall going up against Berks Independents in another meeting of unbeaten teams, Penn State versus Warriors, and the high-scoring Beta Sigma Rho five tangling with Acacia.

The complete schedule is:

7:00—Dorm 14-Beaver House, court 1; Architects-Bunyan's, court 2; Lutheran Students-Penn Haven, court 3.

7:40—Coal Crackers - Beerers, court 1; I.T.K.-Marauders, court 2; Atherton Hall - Brother Rats, court 3.

8:20—300 Club-Dragons, court 1; Penn State Club-Warriors, court 2; Marilyn Hall-Berks Independent, court 3.

9:00—Beta Sigma Rho-Acacia, court 1; Phi Kappa Psi-Triangle, court 2; Delta Theta Sigma-Alpha Zeta, court 3.

9:40—Phi Kappa - Theta Xi, court 1; Sigma Phi Sigma-Alpha Chi Rho, court 2; Delta Sigma Phi-Tau Kappa Epsilon, court 3.

10:20—Kappa Sigma-Alpha Sigma Phi, court 1; Tau Phi Delta-Alpha Gamma Rho, court 2; Phi Sigma Delta-Sigma Nu, court 3.

Alpha Chi Sigma Advances in IFC

The Alpha Chi Sigma bowlers closed in on first place Theta Chi by blanking Chi Phi in the IFC matches held at the Dux Club recently.

Meanwhile, the league leaders were going down to defeat at the hands of Delta Sigma Phi.

Individual stars of the evening were Raymond Sowko, Kappa Delta Rho, and George Pringle, Alpha Gamma Rho. The former took the single game high scoring honors of the night with a 199 and placed second in the three game high totals with a 520.

Pringle placed second in the single game column with a 194 score, and third among the evening's leaders with a 510 total. The three game high was turned in by James Kiskadden, Delta Upsilon, with a 524 total.

Other performers with high scores were Charles Ruhl, Kappa Delta Rho; Malcolm White, Delta Chi; and Samuel Zeiders, Lambda Chi Alpha.

Standing of Teams

	W.	L.	Pct.
Theta Chi	52	20	.733
Alpha Chi Sigma	49	23	.681
Delta Upsilon	46	26	.638
Delta Sigma Phi	35	21	.625
Lambda Chi			
Alpha	40	32	.556
Delta Tau Delta	40	32	.556
Tau Kappa			
Epsilon	32	40	.444
Delta Chi	32	40	.444
Alpha Gamma			
Rho	29	43	.402
Chi Phi	28	44	.389
Beta Theta Pi	25	47	.347
Kappa Delta Rho	24	48	.333

Refreshing as a Picnic Fountain Service at Rea & Derick



Hearty meals in man-sized portions—that's what you'll find at Rea and Derick. Quick lunches or full dinners. take your choice. But every dish is offered at the lowest possible price—at a price every student can afford. Eat your lunch at Rea & Derick today. You'll soon be a

For real enjoyment and strict economy, try Rea & Derick Fountain Service T-O-D-A-Y!

Rea and Derick



WOODRING'S FLORAL GARDENS

James E. Wolfe, '39, Manager

Flowers for the Dance

TELEGRAPH FLOWERS

for

VALENTINE'S DAY

117 E. Beaver Ave. Phone 2045