

League Lists 17 Top Teams

League standings in the WRA intramurals list nine basketball teams and eight bowling teams undefeated.

In the basketball tournament, undefeated teams with two wins to their credit are Kappa Delta in League I; Alpha Chi Omega, Delta Gamma, and Gamma Phi Beta in League II; and Alpha Epsilon Phi, Theta Pi Alpha, and Tri Dorms in League III.

In their one game played this season Atherton and Kappa Alpha Theta came out on top.

Bowling teams, which have been in competition twice and have perfect percentages so far this season are Co-op in League I, Gamma Phi Beta and Phi Mu in League II, and Theta Phi Alpha in League III.

Alpha Omicron Pi, Atherton, Alpha Chi Omega, and Alpha Gamma Delta have all won their initial encounters.

Engagements

Frith—Usher

Frith—Usher

An announcement was made of the engagement of Miss Mary Usher, Galeton, Pa., to Harold Frith, class of '48, during the Thanksgiving holidays. Mr. Frith, a student in Petroleum and Metallurgy Industry, is a member of the Sigma Phi Alpha fraternity.

Co-Edits

Kappa Delta

Officers of the pledge class of Kappa Delta are president, Mildred Drumgold; vice president, Kay Doner; secretary-treasurer, Dolores Jelacic.

Sigma Phi Alpha

Members of Sigma Phi Alpha and their guests will dance to Gene Sprague's orchestra at their "Snowflake Serenade," Friday, from 9 to 12 p.m. The dance will be semi-formal.

WSGA—

(Continued from page one)
Service which is conducted in needy sections of the Southern Highlands.

Lacking endowment, the organization depends from year to year upon the generosity of friends. On its executive board are a number of prominent college presidents and government officials.

Penn State students, both men and women, will be helped by the Christmas Drive through its contribution to the Estelle Hetzel

Emergency Fund. The fund, established by the wife of the College's late president, helps students meet emergencies through loans and gifts for hospital care, books, and small fees.

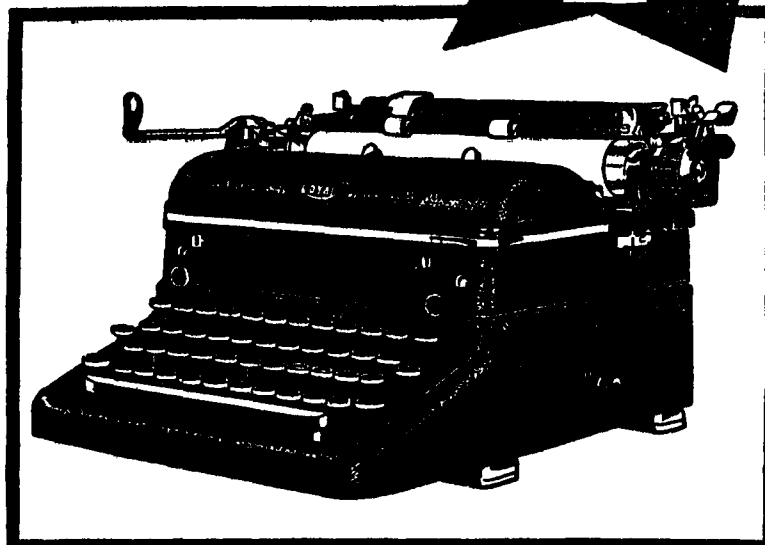
The Christmas Drive was established on the campus in 1926 and since that time has contributed a total of \$3043.84 to various organizations that aid needy persons.

NEW LOCAL HEADQUARTERS FOR ROYAL STANDARD & PORTABLE TYPEWRITERS

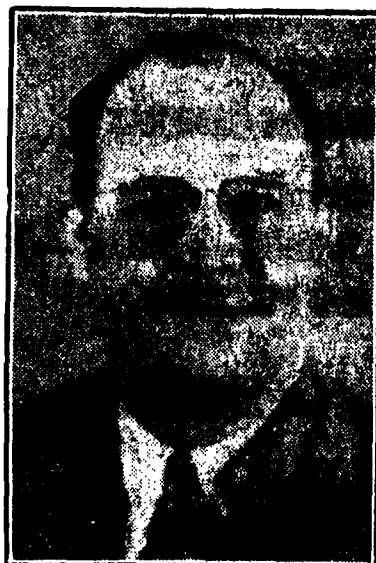
In order to better serve our many customers in this area, we are pleased to announce the opening of a new Sales & Service branch at . . .

103 E. BEAVER AVE., STATE COLLEGE

SEE...TRY
ROYAL'S
NEW NUMBER
1



with **MAGIC* MARGIN**



CARL H. STEELE, Owner



W. E. McNIGHT, Manager

★
OUR COMBINED
40 YEARS
EXPERIENCE
IS YOUR
GUARANTEE



Finest facilities in this part of the state for the sale and service of typewriters by technically-trained staff—Roytype Carbon Paper and Ribbons.

Carl H. Steele Agency

103 E. BEAVER (Opposite Post Office)

PHONE 2514

STATE COLLEGE

(Williamsport Address — 224-226 W. Third Street)

NOW AT YOUR WARNER THEATER

Cathlamet
"Gone With The Wind"
at 12:35, 4:26, 8:16

State
B. STANWYCK
DAVID NIVEN
"The Other Love"

Hittans
"I Wonder Who's Kissing Her Now"