

'Kick-off Rally' Starts PSCA Finance Drive

PSCA Campus Campaign Leaders



PHYLLIS JAMES



ROBERT DRICK



TED BUNNELL

With every Section leader in the PSCA Finance Campaign named by the three chairman, Ted Bunnell, Phyllis James and Robert Drick, the organization of the Divisions on the campus and in town has progressed, and in many cases Division leaders have procured their full complement of needed solicitors. Every student and faculty and administrative person will be contacted personally by a solicitor for a contribution of one dollar or more for the annual PSCA service-activities budget.

Ted Bunnell, chairman of the faculty and administrative personnel, reports the following school and group chairmen for the Campaign which begins November 9 at the Kickoff Rally in the First Presbyterian Church social rooms: Agriculture, Paul Edinger; Chemistry and Physics, A. W. Hutchison;

Education, C. O. Williams; Mineral Industries, C. W. Robinson; Administration, John Laudenslager; Liberal Arts, William Gray; Engineering, Alexander Zerbau; Physical Education, Sherman Fogg; Carnegie Hall, Frank Gullo and Central Extension, Charles Graff. A chairman is yet to be selected for the Ordinance Laboratory.

Phyllis James, Women's Chairman, has announced the following Section Leaders together with their Division Leaders for the Campaign: Section I, Marjorie Billstein with Division Leaders Dorothy Knowles, Rusty Ringling, Peggy Weiss and June Kircher. Section II, Patricia Woods with Division Leaders Frances Eshleman, Marian Judy, Shirley Gauger and Jo Casselberry.

Section III, Dorothy Park with Division Leaders Elizabeth Parkhurst, Harriet Schlee and JoAnne Roraback. Section IV, Sally Schleyer with Division Leaders Polly Moss and Kathryn Mitchell. Section V, Carolyn Currier with Division Leaders Anne Dunaway and the second yet to be selected.

Robert Drick, Men's Chairman, has announced the following Section Leaders together with their Division Leaders for the Campaign: Section I, Rodney Engstrom together with Division Leaders Randall Rice, David Booser and George Van Artsdalen, Jr. Section II, Frank Richardson with Division Leader Scott Rhodes and four others yet to be named. Section III, Rudolph Branneka with Division Leaders Jack Styer, Carl Lawrence, Max

McMillen, Paul Andre, Irvin Reitz and Ray Schlosser.

Section IV, Ralph Harris with Division Leaders Stanley Coville, John Chew, George Rhoad and two more to be selected. Section V, Emory Brown with Division Leaders John Long, Robert Loughry, Robert Troxell, James McNall, Richard Mauthe, Richard Greenawalt, Sam Neely and Jack Reeves. Section VI, Leo Skellchock with Division Leaders Ed Banyai, Walt Gabel, William Wasmus and Caleb Morris.

Section VII, Gray Mattern with Division Leaders Walter Frisbie, Robert Stumpf, John Hamer and William Hill. The Windcrest Section Leader is yet to be announced together with the zonal organization.

At a dinner for Section and Division leaders last Wednesday evening at the Anchorage reports concerning solicitor personnel for the campaign showed at that time to be about fifty per cent complete with a good chance for a full complement of solicitors by the time of the Rally on Sunday. There will be more than 350 solicitors working on the campaign from November 9 to 19.

President's Assistant

Writing of the Penn State Christian Association, President Hetzel stated, "For more than seventy years the Christian Association has been an important factor in the lives of Penn State students. It has demonstrated its value through a strong program of worthwhile activities."

Because this feeling expressed by President Hetzel is shared by so many others, I feel certain that in its forthcoming financial campaign the Association will receive the generous contributions it must have to carry on its services and continue its influence.

A. O. MORSE,
Assistant to the President
in charge of Resident
Instruction.

Publicity Group Issues CA News

For the first time the P.S.C.A. is publishing its newspaper, "Nittany Lines," on a regular schedule.

A mimeographed paper issued twice monthly, it gives detailed news of P.S.C.A. activities. All news for the paper is formulated by the publicity committee in cooperation with the various other commissions and committees.

Students desiring a copy may pick one up either at Student Union or in 304 Old Main.

Finance Head, Orvis Keller, Announces Goal of \$6300

A "Kick-Off" rally for campaign, division, and section leaders, and solicitors in the Presbyterian Church basement at 3 p.m. Sunday will formally initiate this year's Penn State Christian Association finance drive.

J. Orvis Keller, P.S.C.A. finance chairman, recently announced a goal of \$6300 for the students and faculty. Of this amount, the students are asked to contribute \$4200 and the faculty \$2100.

Robert Drick, Phyllis James, and Theodore Bunnell have been selected as campaign leaders of men, women, and faculty respectively.

Dr. Brunner Heads CA Directing Body

Dr. Henry S. Brunner, head of the department of agricultural education, is chairman of the P.S.C.A. Board of Directors.

Other officers of the Board, who make up the executive committee, are Mrs. L. Wallace, vice-chairman; James T. Smith, secretary; MacDonald Heebner Jr., treasurer; Ralph Harris, assistant treasurer; and J. Orvis Keller, chairman of finance.

Members of the Board who serve in various other capacities are Dr. Ray Carpenter, Dr. W. V. Dennis, Prof. Hummel Fishburn, Dr. Harriet M. Harry, John Henry Frizzell, Dr. John F. Harkins.

Prof. Royal Gerhardt, Dr. Fred F. Lininger, Dr. James H. Moyer, Prof. Harriett Nesbitt, Prof. Gilma Olson, Prof. Seth Russell, Dr. H. K. Schilling, Dr. J. F. Shigley, and Dean Emeritus Ralph L. Watts.

Ex-officio Board members are Rev. Harry Buck, Rev. Donald Carruthers, Rev. Robert H. Eads, Rev. Frank W. Montgomery, Dean A. R. Warnock, Dean Pearl Weston, and Pat Woods.

Lingnan University, Canton, China, is one of CA's special projects.

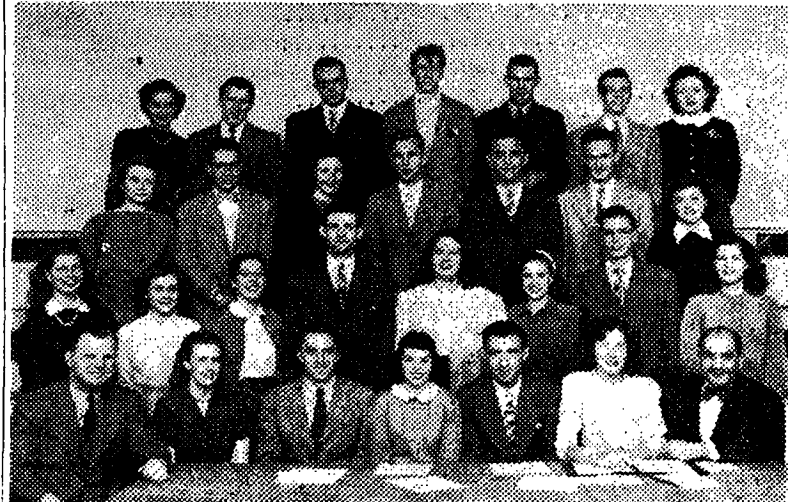
Dean of Men . . .

The oldest student service organization on the campus is the Penn State Christian Association. Since its inception, student-inspired, in 1872 it has been offering student services of various kinds without interruption. Now in this post-war period its quantity and quality of services are at their peak.

Since its beginning in 1872 the Christian Association work has been supported largely by faculty and student voluntary contribution of funds. In this respect it is essentially democratic, and it should be kept so. Contributions to the 1947-1948 fund-raising campaign should continue the long tradition of generous giving to this worthy cause, so much a part of the true Penn State.

A. R. WARNOCK,
Dean of Men.

Executive Committee Directs CA Work



PSCA CABINET

The Penn State Christian Association has within it seven commissions and three committees which help CA fulfill its aims. Their work is under the supervision of the executive committee which meets to determine general policy.

Commission I, headed by William Niering and Dorothy Park, deals with world, fellowship by supporting WSSF drives, the World Student Christian Federation, and sponsoring programs for foreign students at the College.

Robert Loughry and Margaret Weiss are in charge of **Commission II**, personal relations. Under this are found vocational career conferences, a Courtship and Marriage Institute, and the Skeptic's Hour, all calculated to help the individual.

Religious programs are presented by **Commission III** under the direction of Marjorie Billstein and William Glenn. These include worship programs, Bible study groups, the out-door chapel, interfaith groups, and a worship workshop, as well as the all-college Religion-in-Life Week.

Community Service, the special project of **Commission IV**, is su-

pervised by June Kircher and Frank Richardson. They sponsor social inquiry trips, relief work in the community and abroad, service programs for the underprivileged, worked on the schoolhouse reconstruction last spring, and present summer work opportunities. Special project for this year is a nursery in Windcrest and recreation for trailer camp children.

Commission V, with Ruth McWhirter and Buddy Thomas at its head, plans CA campus action, which includes the annual caroling, fireside sessions, student-faculty relations committee, and inter-fraternity pledge dinner, and the Married Couples Club.

Public Affairs, **Commission VI**, are handled by Jean Moore and John Hamer. This group sponsors radio and community forums, monthly public affairs films, inter-racial activities, the Atherton News Review, public affairs meetings, and campus inter-group programs.

Creative recreation is the aim of **Commission VII**, headed by Warren Myer and Sally Schleyer. Hikes, square and social dances, conferences, and the handicraft

They and James Smith, P.S.C.A. general secretary, will present the drive procedure at the rally Sunday afternoon. At that time solicitors will receive their packets.

Honey Boys Sing
Entertainment for the rally will be provided by the "Honey Boys," vocal quartet, and by Barbara Cooper who will present a dramatic reading. Group singing will be led by Hummel Fishburn and Frank Gullo of the music department.

The drive is scheduled to last ten days, beginning November 10 and ending Nov. 20. Each person who contributes \$2.50 or more receives a membership card which entitles the holder to national affiliation with the Y.M.C.A. and Y.W.C.A. A lesser amount entitles the person to general membership in the local organization.

In explaining the drive, Mr. Smith stated that students may pledge an amount to be added to their student activities fees to be paid in February. For veterans under the GI Bill this means that it would be deducted from their book reimbursement.

Goal Breakdown
A breakdown of the student goal shows that fraternities are being asked to contribute \$1500. Pollock Circle and Nittany Dormitories have a goal of \$600 each, and other independents are being asked to raise \$500. Goal of the women students is \$1000.

Mr. Smith explained that the \$4200 to be raised by the students does not provide one-third of the Association's operating expenses for the year. Last year this amount was \$11,507, and estimated operating expense for this year is \$15,335.

Full Membership Sought
Part of the increase is due to the addition of another secretary to the professional staff. However, he added, the student contributions are not used in the payment of salaries. These are paid by alumni, friends and the College. The breakdown of sections is such that every student should be contacted by a solicitor, and full membership is being sought to support an expanding program.

The CA Club for all students sponsors periods of recreation and a discussion program each week.

During the spring of 1947 Commission VI presented Public Affairs movies once a week.

"Nittany Lines" is the CA newspaper, put out by the publicity committee.

work-shop are under their direction, as well as the party-planning work-shop.

Aiding these seven commissions are the **Ralph Watts Lodge Committee**, headed by Scott Rhodes and Jean Roepers, which takes care of the CA lodge and schedules all-college parties; the **Personnel Committee**, in charge of Patricia Babbit and George Rhodes, which collects material for records, issues membership cards, plans new member meetings, and conducts ceremonies of initiation and dedication; and the **Publicity Committee**, headed by Joan Hobbs and Ralph Temples, which is in charge of news reports and cuts, the bulletin board, posters and materials, advertising, Student Handbook, CA News, Nittany Lines, and Publicity Folders.

The **executive committee** is composed of Patricia Woods, president; Emory Brown, vice-president; Barbara Keefer and Rusty Ringling, secretaries, and Ralph Harris, treasurer.

PSCA Representatives To Attend Conference

PSCA will send four representatives to the Middle Atlantic Region Student Volunteer Movement Conference at Bucknell University today, Saturday, and Sunday, Alex Atty, associate secretary stated.

Representing PSCA will be Mrs. Alice Byers, associate secretary, Marjorie Riley, Jean Ropp and Woodrow Weber.

The Bucknell meeting is a preliminary to the North American Student Conference on Christian Frontiers at the University of Kansas, Dec. 27-Jan. 1. Forty delegates will be chosen from the Middle Atlantic Region to attend the Christmas Froncon meetings.