

PSCA Supplement

Published by The Penn State Christian Association

Sophomore Club States Aims; Constitutions Will Be Drawn Up

"To promote fellowship, friendship, and better understanding of local and world affairs is the purpose of Club 50", said Walter Gabel, president.

A new sophomore organization of the PSCA Club 50 meets in the Hugh Beaver Room at 7:30 p. m. each Tuesday.

Plans of the executive committee call for three meetings per month to consist of a discussion by different speakers on the same topic. The other meeting of the month will be strictly of a social nature.

Collections have been initiated to pay for care packages, parcels of food, clothing, etc., to be sent to needy countries of Europe. For the time being the club plans to send one per month, but hopes later to increase the number.

Officers of the club, which comprise the executive committee: are Walter Gabel, president; Dave Binns, vice president; Reta Reed, secretary; and Alfred Darrach, treasurer.

Social aspects of the club are under the direction of James Angus, Ralph Johnson, Richard Yoder, and Sara Yoder.

Marian Judy, Jane Mink, and William Renshaw comprise the program committee. Publicity is under the direction of Kenneth Hess and Charles Gehring.

William Kraybill and Phillip Neely have been selected to draw up a constitution and establish general policy.

As a personal opinion, Gabel stated that he hopes the club will continue as an active group for the three years the present sophomore class will be at the College.

Cabin Parties Provide Fun In Watts Lodge

Four all-college cabin parties are held each year at Ralph Watts Lodge under the sponsorship of the P.S.C.A. This year the Lodge committee is headed by Scott Rhodes and Jean Ropp.

Other than playing host to the all-college groups, church student groups, fraternities, clubs, and other campus organizations enjoy inspirational and relaxing weekends at the cabin.

Located four miles south of State College on Tussey Ridge, the cabin was built in 1927 by the Young Men's Christian Association of that day.

In addition to a spacious porch on the first floor, there is a living room and kitchen-dining room, each heated by a glowing fireplace. The second floor is divided into a men's and a women's dormitory, each accommodating twenty people.

Weekends earmarked for all-college cabin parties to be held this semester are November 15-16, December 13-14, and January 17-18.

Campus Action Group To Sponsor Faculty Visits

Students desiring to visit faculty homes will soon be able to do so under a plan now being drawn up by Ruth McWhirter and Buddy Thomas, co-chairmen of the Campus Action commission.

Under the plan six to ten students will go as a group to some faculty member's home for informal chats on whatever subject they may choose.

The visits will begin the first week of December, and students will be notified when and where they may sign up to visit "the home of their favorite professor."

This plan is a branching out of the fireside sessions held last year and to be continued this year.

Board of Directors Fixes Annual Budget

J. Orvis Keller, chairman of the finance committee of the PSCA Board of Directors, has submitted the annual budget adopted by the Board and beginning official operation as of last July 1, 1947.

The books of the Association are audited yearly by C. P. Rowland Co. of State College. Copies of the audit together with a breakdown of Student Cabinet Project expenses may be procured at 304 Old Main.

ESTIMATED INCOME	
The Pennsylvania State College	\$5,000.00
Student-Faculty Drive	6,000.00
Parents' Gifts	1,100.00
Alumni, Friends and Trustees	3,000.00
Lodge Fees	100.00
Book Store Sales	10.00
Student Mimeograph Service	75.00
Miscellaneous	50.00
Total	\$15,335.00
ESTIMATED EXPENSES	
Summer Contributions and Assessments	25.00
Finance Solicitation	600.00
General Expense	450.00
Office Expense	350.00
Postage	250.00
Salaries	10,220.00
Contingent (not included in salaries)	325.00
Secretary Travel and Conference Expense	275.00
Bad Debts	25.00
Depreciation	215.00
Special Cabinet Projects	510.00
World Fellowship Relations	80.00
Personal Relations	100.00
Christian Heritage and Worship	150.00
Community Service	200.00
Campus Action	100.00
Public Affairs	100.00
Creative Recreation	100.00
Sophomore Orientation	150.00
Personnel Committee	50.00
Publicity	300.00
Watts Lodge Committee	200.00
Student Handbook	150.00
Miscellaneous	60.00
Note Reduction	200.00
Total	\$15,335.00

Commission Discusses Man-God Relationship

"Man's Relationship to God and the Universe" is the subject of a series of discussions now being conducted each Wednesday night in the Hugh Beaver Room, 304 Old Main.

The discussions are under the direction of Mrs. Alice Byers, PSCA associate secretary, William Glenn, and Dorothy Park, Commission III co-chairman.

All-College Pres.

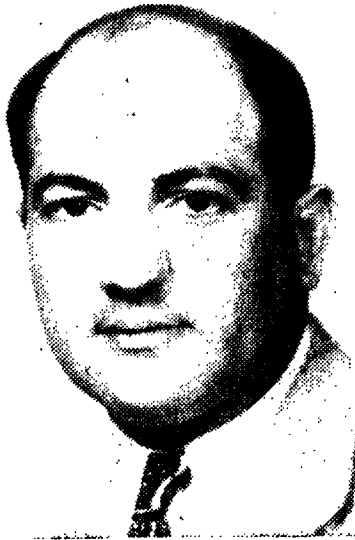
I would like to take this time to congratulate the Penn State Christian Association on the work they have done in the past; especially the part they played in the orientation of the sophomore class.

First of all they sponsored the hand-book, and second they delegated counselors to specifically orientate the individual groups. These items which I have mentioned are the ones which I have been in a position to observe and know that they have been beneficial to various organizations on the campus as well as student government.

To an organization which is highly deserving of student support, I wish you success in your coming drive for financial aid.

THOMAS LANNEN, All-College President.

Smith, Atty, Byers Head CA SU Group Studies PSCA Needs



ALEX ATTY

James T. Smith, executive secretary of PSCA, Alex Atty, men's associate secretary, and Alice J. Byers, women's associate secretary, very ably direct the Student activities of the Christian Association.

Jim Smith, as he is known around campus, is beginning his fourth year at the College. In addition to his duties as general secretary, he serves as acting College chaplain.

After doing his undergraduate work at Kansas Wesleyan, Jim did three years graduate work at the Yale University Divinity School.

His first job was Director of the Wesley Foundation at the University of California, where, Jim says, "I found my wife whose name was Smith". From there he went to Pasadena where he was director of religious education at the Methodist Church. He left there in 1943 to take up his duties here.

Alex Atty

Mr. Atty, better known as just Alex, joined the CA staff this year after being resident counselor of Pollock Circle last year. He graduated from West Virginia University, and recently received his MA at the College.

In addition to his duties, he is working toward a doctor's degree in the School of Education. In 1938 Alex captained the West Virginia football team, and played for the Cleveland Rams in 1939.

During the war Alex worked closely with Chaplain's and Special Services and with the Red Cross in recreation and personal counseling programs. In 1945 he coached the China Army All-Stars which played the Navy All-Stars in the Rice Bowl at Shanghai, China.

"Jakey" Byers

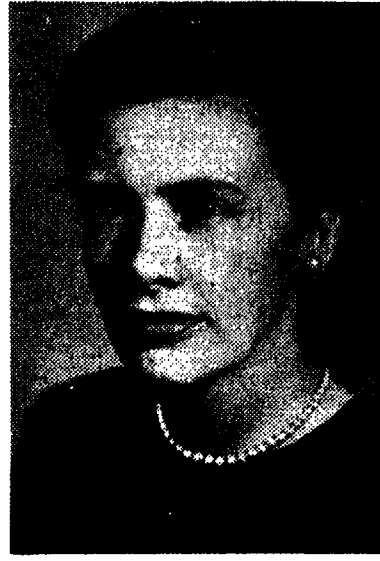
Mrs. Byers, or "Jakey", is also in her first year of work with the local CA. While Jakey is here her husband is continuing his theological study at Yale Divinity School.

Jakey graduated from Oregon State College, and recently received her Bachelor of Divinity degree from the Yale Divinity School too.

From 1941-43, she served her Alma Mater as Executive Secretary of the Christian Association. Afterwards she became a graduate fellow of the Danforth Foundation, at which time she went to Yale Divinity School. There she was prominently identified with the local YWCA and Yale University Christian Association.

Over 900 Active in CA

Over 900 student and faculty personnel are active on various PSCA committees and projects. Counting duplications, over 28,000 students and faculty were recipients of a service or attended one of the many CA activities last year.



ALICE J. BYERS



JAMES SMITH

Sixty Activities Scheduled by Commissions

Variety, originality, and personal contact are indicative of 60 activities to be conducted by the Penn State Christian Association throughout the year.

Programs now getting under way that will continue for the remainder of the college year include public affairs, Bible studies, handicraft class, dancing club, fireside sessions, and visits to faculty members' homes.

"Christian Vocations" will be the topic of discussion for a series of meetings November 18-19. Dr. Richard O. Comfort, Dean of Warren H. Wilson Institute of Rural Church Work, Swannoo, N. C., has been selected to lead the discussions.

On December 18, the P.S.C.A. presents the annual all-college carol sing in front of Old Main.

Religion-in-Life Week Set

Religion-in-Life Week is scheduled for February 22-27. Each year such a week is observed in cooperation with the University Christian Mission which is sponsored by the Federal Council Churches of Christ in America.

March winds are expected to bring to the campus a series of meetings designed to study the inadequacies of contemporary American higher education.

The annual World Student Service Fund drive will be held April 4-10. Henry Pitt Van Dusen, president of Union Theological Seminary, has been selected to open the drive with a chapel message on Sunday, April 4.

Dr. Paul Popenoe, director of American Institute of Family Relations, will lead the Marriage Institute May 9-12. He will be assisted by other well known experts in the fields of courtship, marriage, and family relations.

The official student union committee of the College headed by Mr. S. K. Hostetter recently asked the PSCA what quarters and facilities CA may need to carry out an effective program.

This is a challenge to the CA. It is the duty of the association to study its present and future program needs and determine what physical facilities and equipment it will require.

In order to carry on this work effectively, a PSCA Student Union committee has been elected by the Board of Directors.

Members of the committee are James Smith, chairman; John Henry Frizzell, C. Ray Carpenter, Gilma Olson, Patricia Babbit, Joanne Hobbs, Scott Rhodes, and Frank Richardson.

Four immediate problems were presented when the committee held its first meeting on Oct. 29.

First, when the Student Union Building is completed, should CA keep its present location in Old Main and still utilize the Student Union facilities?

A second question was in regard to whether CA should become an actual part of the SU, working out its program where students would find the Association more accessible.

If this alternative were to be adopted, CA would require adequate office space, a lounge, and possibly a room set apart for worship and meditation.

Another plan would be to campaign for a building of its own. The last alternative would be to have CA housed in a separate wing of a new chapel.

The committee will hold its next meeting in 304 Old Main, 4 p.m., November 11. At that time it will draw up definite plans regarding the future home of the PSCA.

PSCA Adds Commission On Creative Recreation

Creative recreation, Commission VII, has been added to the list of CA activities for this year. Heading this commission are Sally Schleyer and Warren Myer.

To date the commission has listed two outstanding activities. The first is a dancing club which is held in 405 Old Main from 8-10 p.m. each Thursday.

A class in handicrafts to be held in the Arts and Crafts on second floor home economics building each Tuesday afternoon will commence next week.

Included in the work is leathercraft, plastics, etc., and there is no charge for materials. Interested personnel should sign up for the project either at the Student Union or in 304 Old Main.

Dean of Women

The P.S.C.A. had a friendly interest in the well-being of all students on campus. It operates as a co-operative enterprise with equal shares of new visions, new opportunities, and new achievements. Such an organization deserves the full support of students, faculty, and friends of the College.

PEARL O. WESTON, Dean of Women.

Country School Pupils Get Help from Students

Fifty students worked on a project co-sponsored by the Community Service Commission and Phi Mu Sorority which provided organized recreation for the children of four country schoolhouses last spring.

Then in co-operation with the Board of Education and the School of Education, they painted the inside of the two run-down buildings. Penn State received national publicity for this national service.