

Politics Attract Students; Two Parties Furnish Officers

Campus politics, one of the liveliest and most absorbing of Penn State activities, attracts many hundreds of students each year to the memberships of the two or more campus political parties.

Student political organizations and all-college elections each spring furnish the class officers of the Sophomore, Junior and Senior classes and the All-College officers. There are at present two campus political parties, State and Nittany-Independent, each run by party (clique) leader.

Nominees for class offices are selected by each party through clique primaries two weeks before general election time. The successful candidates in each party vie in the all-college election.

tion when students of each class vote for their respective class officers and all students cast ballots to select all-college officers.

Three Class Officers

Elective posts filled in each class and for all-college officers are president, vice president and secretary-treasurer. The All-College officers and the class presidents have seats on All-College cabinet, whose chairman is the All-College president. Secretary-treasurers are members of the Interclass Finance Committee, headed by the All-College secretary-treasurer, which controls student funds.

All-College elections and clique primaries are supervised by the Elections Committee, appointed by the All-College president and approved by Cabinet. Rules and regulations regarding political parties, campaigning, the eligibility of candidates and balloting are set up in the Committee's election code.

Any student is eligible to be a candidate for a political office in the class in which he is duly registered providing he has an All-College average of 1 and is the candidate of a political party officially recognized by the Elections Committee. Political party memberships are open to all whose political sympathies coincide with that party's policies.

Political Cliques

The State party, whose slate was successfully elected with one exception in last spring's balloting, was organized late last winter when its predecessor, the Campus-Key party, lost strength after a previous election defeat. The Campus-Key party continued in nominal existence under new leadership but failed to organize in sufficient strength, due to the drain of membership by the State party, hence did not put forth a slate of candidates in the last election.

Delegates —

(Continued from page three) sorship or discipline. The report of the panel on academic freedom pointed out that the "teacher is entitled to freedom in his classroom in discussing his subject," and must be insured the right to join any political, religious or social clubs, groups or organization "not illegal under the civil statutes."

Name Bands—

(Continued from page fourteen of Vipers," and the equally vituperative "Essay on Morals."

One other notable speaker will be brought to the campus when Norman Thomas will speak under the sponsorship of the PSCA. The date will be released later.

Jazz Concerts

Aside from classical music, this campus has of late been in the habit of sponsoring jazz concerts, with such big names as Art Hodes and Sidney Bechet. This year may come up with one or two big "bashes."

All-College Cabinet Acts as Liaison Between Students, Administration

Penn State student government is handled by All-College Cabinet. It is the medium between the student body and the College administration and governs all student affairs and activities.

The membership of Cabinet comprises the All-College president, vice-president and secretary-treasurer, class presidents, presidents of the school councils, Women's Student Government Association, chairmen of the Board of Publications, and the Board of Dramatics & Forensics, presidents of Interfraternity Council, Panhellenic Council and Independent Student Council.

Tribunal Enforces College Rules

The All-College president, with Cabinet approval, regularly appoints an eight-man Student Tribunal to enforce Cabinet regulations and customs among male students.

Tribunal consists of two eighth semester men, one of whom is chairman, and six other members apportioned from among seventh, sixth and fifth semester male students. This year's chairman is Alan G. Hack.

Dating Code—

(Continued from page fifteen)

the fraternity house by 1 a.m. on Friday and Saturday nights, except when special permission is given by the College on certain big weekends. Sunday night women guests must leave by 11 p.m. and on weekday nights women dinner guests may be in the fraternity house until 8 p.m.

Alcoholic Beverages

c. It will be understood that alcoholic beverages will not be served to or used by members and women guests while participating in dating under this code.

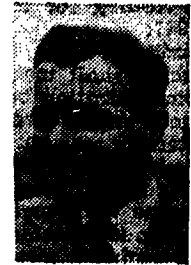
d. Members of IFC will in all good faith adhere to the above provisions and will to the best of their ability obey the provisions of this code and the regulations of the College with special reference to the following:

Violations

Section 86—Regulations for Undergraduate Students, 1946-1947. "The right is reserved to sever at any time the College connection of a student whose influence is found to be injurious to the standards of morals and scholarship of the student body, or whose conduct is prejudicial to the good name of the College."

4. In order to protect this code against violations which might cause its privileges to be withdrawn from all fraternities, any known violations of this code shall be reported to the Interfraternity Council Judicial Committee consisting of the Interfraternity Council faculty advisor, the President, and four members of the IFC Council, and that group shall hold a meeting to discuss the case of the violating fraternity, passing recommendations on to the Student Welfare Committee.

Penn State is located in the geographical center of Pennsylvania.



Lannen
retary, Student Union manager, Penn State Christian Association representative and the chairmen of Tribunal and Judicial. They may participate in Cabinet discussion, but are not entitled to vote.

Meets Bi-Weekly

All-College Cabinet meets bi-weekly in Room 201, Old Main, where it deals with matters of student interest according to accepted parliamentary rule. Motions are made and seconded by Cabinet members and are discussed at length by anyone present who is interested. After discussion, the matter is referred to committee for a special report, tabled for later discussion, or voted upon. A majority vote is necessary to carry or defeat a motion.



Troxell
To effect Cabinet legislation, the All-College president refers the matter to the appropriate medium.

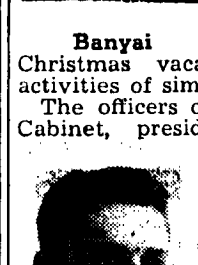
Where the administration is primarily concerned, a letter of resolution is prepared or the All-College president presents the problem in person to the President's office. In matters of purely student interest, a committee is usually formed to carry out the plans of the Cabinet. This committee is usually headed by a cabinet member.



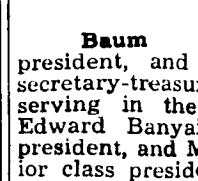
Fulmer
Among the recent activities of Cabinet have been the supervising of All-College dances, the voting of surplus funds to Student Union, participation on behalf of the student body in the National Student Organization, the securing through the President's office of a four-day extension of the Christmas vacation and other activities of similar character.

Cabinet Activities

The officers of the All-College Cabinet, president, vice-president and secretary-treasurer, are elected by the entire student body. Class officers are elected by members of the respective classes. Officers now serving are Thomas Lannen, All-College president, Robert Troxell, vice-president, and Eugene Fulmer, secretary-treasurer. Class officers serving in the cabinet include Edward Banyai, senior class president, and Martin Baum, junior class president.



Banyai
The officers of the All-College Cabinet, president, vice-president and secretary-treasurer, are elected by the entire student body. Class officers are elected by members of the respective classes. Officers now serving are Thomas Lannen, All-College president, Robert Troxell, vice-president, and Eugene Fulmer, secretary-treasurer. Class officers serving in the cabinet include Edward Banyai, senior class president, and Martin Baum, junior class president.



Baum
critique, publishing four editions a year, plans a program of short stories, literary features, and national welfare discussions

CLEAN
APPETIZING
MEALS
PREPARED IN AN
ULTRA FINE
SETTING
RESTAURANT

142 E. COLLEGE AVE.

Do You Want

- Neat Reports?
- Correct Reports?

FOR YOUR COLLEGE WORK?

HERE IS THE IDEAL SOLUTION TO YOUR SECRETARIAL PROBLEM!

For your . . .

- Technical Reports
- Thesis Work
- Mimeographing
- Other Typing

— SEE —

A. M. LOWDER

SECRETARIAL SERVICE

205 Hotel State College
PHONE 4906

IT'S NEW . . .

DUFFY'S New Tavern
— GRILL —

The newest addition to your pleasure . . . featuring delicious
Sea Food — Chops — Steaks —
Sandwiches

Open for Your Convenience and Pleasure
from Noon 'til Midnight

DUFFY'S TAVERN

Boalsburg, Pa.

Boalsburg 5392

PARENTS

Keep up with the activities of your son and daughter at Penn State. Subscribe to the DAILY COLLEGIAN for 1947-48.

I wish to subscribe to the DAILY COLLEGIAN for a period of () one year () one semester.

NAME -----

STREET -----

CITY ----- STATE -----

Enclose \$2.50/Semester \$4.00/Year

Send to CIRCULATION DEPARTMENT,
COLLEGIAN OFFICE, CAMPUS