

Bandleader - Vocalist Playing for Prom



Pastor Sax Sets Style

Tony Pastor who is appearing with his orchestra in Recreation Hall, Friday, is regarded as one of the best stylists in the musical field, according to Jack Shrum, Junior Prom chairman.

Pastor played saxophone in the original Artie Shaw orchestra, and did some vocals with the band. In 1939 when Shaw became ill, Tony Pastor stepped in as leader. His success in leading the band encouraged him to go ahead and form an orchestra of his own.

Some of Pastor's recordings include "Paradiddle Joe," "Robin Hood," and "One Meatball." Recently he has released two record albums.

Joining the orchestra at the

Junior Prom will be the Clooney Sisters, two featured vocalists. Pastor happened to hear them on the radio in Cincinnati, and promptly hired them for his band. In the trumpet section will be Stubby Pastor, Tony's youngest brother, and they are often mistaken for each other. Another outstanding member of the Pastor band is drummer Henry Riggs. He is the star of the "Paradiddle Joe" recording.

The Pastor orchestra comes to the Junior Prom after recent engagements at the Hotel Pennsylvania in New York. The band is making a cross-country tour which will terminate at the Palladium Ballroom in Hollywood. While on the coast they plan to make a motion picture.

Liberal Arts Forum Opens

The 37th annual Liberal Arts Lecture Series will open in 121 Sparks at 8 p. m. Thursday, February 27. The series will include addresses by three well-known speakers, a panel forum, and a summary address by Dr. Ben Euvema, dean of the School of Liberal Arts.

The tentative schedule for the series includes addresses by Dr. Thomas Mendenhall, associate professor of history at Yale University, on "The Yale Plan of Curriculum Revision," February 27.

Dr. Alfred G. Pundt, associate professor of history at the College, on "Germany's Academic Goosestep," March 20; and Dr. Bryn Hovde, president of the New School of Social Sciences, New York.

(Continued on page two)

Two Students Fined \$179.20

Fines totalling \$98.50 added to the borough coffers last evening when William B. Grubbs and John D. Craig Jr. were found guilty of all charges and sentenced by Burgess Alfred E. Yougel in Borough Hall.

Grubbs and Craig were charged by Officer William Hilbush with disorderly conduct and Grubbs was additionally charged with reckless driving and driving without lights at 3:15 a. m. Sunday. They were sentenced to the full fine for each offense.

Earlier in the day, the two students at the College were found guilty of the charge of larceny and both sentenced to a fine of \$80.70 for carrying away the borough's welfare fund sign from the main gate of the campus. They were also ordered to replace the sign.

WSGA Grants Two O'clocks

Coeds have been granted 2 o'clock permissions for the Junior Prom Friday night, WSGA president Mary Lou Waygood said today. The decision came from Senate.

Two members of WSGA will be selected to attend a convention of the Intercollegiate Association of Women Students which will be held at the University of Minnesota in Minneapolis, April 10, 11, and 12. Miss Waygood said.

The purpose of the convention is to get ideas for improving women's student government from colleges representing all parts of the United States. An official letter inviting this college to send two delegates was presented to Senate.

"Anniversary Waltz" has been chosen as the name for the WSGA dance March 1, dance chairman Janet Lyon reported. The dance will commemorate the 75th anniversary of women students at the College.

Dean To Tell War Secrets

"Some Wartime Activities of the School of Chemistry and Physics" will be disclosed by Dean Frank C. Whitmore at a meeting of Sigma Xi, scientific honor society, in 119 New Physics, 8:15 o'clock tonight.

Dean Whitmore, in this, the third "Now it can be told" lecture sponsored by the Sigma Xi, will discuss wartime research experiences in super aviation fuels, penicillin, super-explosives, oxygen camouflage, lubricants, anti-malarials, laundry and dry cleaning, micro-wind tunnels, acoustics, optics, and the relation of peacetime science to war.

An initiation and business meeting will be conducted prior to the lecture in 117 New Physics at 7 o'clock.

Late AP News

Courtesy Radio Station WMAJ

At least 15 persons were killed last night about five miles east of Michigan City in a collision between a bus and an electric railroad train. According to officials of the Chicago, South Shore and Southbend Electric Railroad, the bus was carrying twenty-five persons; all of them railroad section hands. In addition to the 15 killed, three or four were seriously injured.

WASHINGTON — The Senate voted today to keep wartime luxury taxes in effect. The House passed one three-million dollar gift tax exemption on the eight-and-one-half-million dollar gift of land to the United Nations by John D. Rockefeller.

The House Ways and Means Committee voted to delay all action on a proposed cut in income taxes.

The House Appropriations Committee, meanwhile, made a 56 percent cut in the session's first appropriation bill — the request for nearly 316 million dollars recently submitted by the President. The cut will fall chiefly on the Veterans Administration.

So What!

Presenting the first original full-color cover on campus, Froth's Junior Prom issue went on sale this morning at Student Union and the Corner Room.

Froth, running a 20% increase in pages this issue, features a five-page supplement of cartoons, pictures, and a story on Leo Houck's silver anniversary. In his own inimitable style, Froth parodies the series of Chicago reports published in the Collegian. Complete with the monthly columns, Froth also explains why February has 28 days, and exposes the true story of George Washington and the Cherry tree.

Players Do 'Doll House'; Thespian Heads Chosen

Drama Next Week; Revue in April

Ibsen's "Doll House," completely modernized by Arthur C. Cloetingh, will be presented by the Penn State Players on February 27, 28, and March 1.

Tickets for the play will go on sale at Student Union Monday at 8 a. m., for fifty cents, plus tax.

The play centers around the family of Mr. and Mrs. Helmer. The part of Torvald Helmer will be played by Richard Frontman and his wife, Nora, by Jane Staus.

The parts of the three Helmer children will be played by State College youngsters, Bobby by William Henning, five years old; Barbara by Elizabeth Yarnall, six years old; and Emmy by Betty Henzey, seven years old.

The other characters of "Doll House" are Krogstad, portrayed by Portman Paget, Christine by Flanna Brown, Dr. Rank by James Lotz, Anna by Nancy Granger, and Ellen by Marina Christman.

Assistants to the director for the production are Henrietta Campitell and Anita Rosen.

Production managers for the Thespians' Spring revue have been elective, according to Thespian president, Ray Fortunato.

Besides the three positions announced previously, Business Manager for the revue will be Ted LeFever; Personnel, Carol Dieckmann; and Stage Manager, James Cuzzaline.

Advertising Manager for the Spring production will be Jack Saling; Construction, Wilbur Ebersole; and Light Manager, Robert Wickus.

Properties Manager will be Rita Patterson and Jerome Trumper will be Make-up Manager. Still to be chosen by Production Manager Richard Frontman and the staff are the Dance Director and Costume Manager.

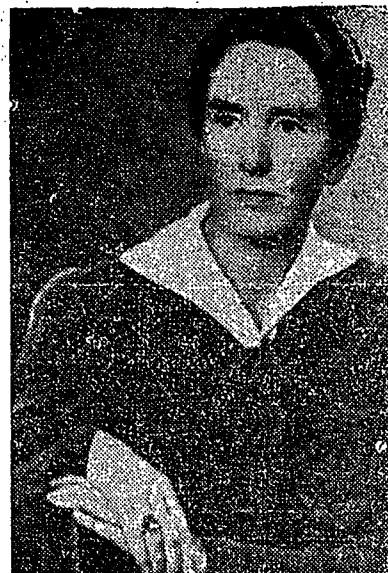
The original show, with music by Ray Fortunato, and lyrics and book written by Pepper Birrhard and Richard Frontman will be given on the IFC ball weekend, April 19.

Faculty

Shortage of paper and rising costs of publication have forced the Collegian to discontinue furnishing bundles of copies to faculty offices.

Faculty members desiring personal copies of the Collegian are requested to subscribe by phoning or calling at the Collegian office. Subscriptions for the period March 4 to May 24 are now available.

Forum Speaker



ERIKA MANN

Erika Mann Here Friday

Erika Mann, authoress, foreign correspondent, radio news analyst, playwright and actress, will bring a realistic and vivid interpretation of current events in Europe to Schwab Auditorium Friday night, when she speaks on "Report From Europe," according to the Forum Committee.

Miss Mann's appearance marks the fourth presentation in the 1946-47 State College Community Forum Series which began on October 24 and will end in April with a forum dialogue on "Our National Health."

Single admission tickets for Friday night's engagement may be purchased for fifty cents at the Student Union desk any time this week, according to a member of the Forum Committee.

Sponsors of the lecture point out that Miss Mann's talk will begin at 8 p. m., thus enabling students to attend the Junior Prom which begins later on in the evening at Recreation Hall.

News Briefs

Junior Prom Booths

Deadline for fraternities and organized groups to reserve booths for the Junior Prom is tomorrow noon, said Jack Shrum, committee chairman. Reservations should be made at the Student Union desk in Old Main. A \$5 fee is required, he said.

Old Mania

All information on pinnings, engagements, and marriages for "Old Mania" should be handed in to the Froth office no later than 8 o'clock this evening, according to Marilyn Jacobson, woman's editor.

Dram Honorary Elects

Theta Alpha Phi, national dramatics honorary, recently elected Harold Chidnoff president and Lynette Lundquist secretary-treasurer. Portman Paget was awarded the Theta Alpha Phi scholarship.

Common Sense Club

The Common Sense Club will hold its first general business meeting of the semester in 121 Sparks at 7:30 o'clock tomorrow to which old members and all others interested are invited. The purpose of the meeting is to work out plans, new ideas and activities for the semester.

Call for Juniors

All juniors interested in a show to be put on some Sunday afternoon in the near future should fill out cards at Student Union before Thursday, said Carol Preuss, co-chairman of the social committee of the junior class.

Business Staff Candidates

New candidates for the Collegian news staff will meet in 8 Carnegie Hall at 7 o'clock. All those interested and unable to attend should call or see Rosemary Ghanbous, Collegian office, Carnegie Hall. There will be a compulsory meeting of second semester candidates in 8 Carnegie Hall at 6:30 o'clock.

Blue Key Sets Date

For Annual Banquet

Blue Key, sophomore men's honorary, will hold their annual banquet at the State College Hotel at 7 p. m. March 5, according to Richard McAdams, president.

Dean of Men Arthur Warnock will be the speaker at the banquet.

A picture of the Blue Key group will be taken at the Photo Shop at 7 p. m. Wednesday.

McAdams also said that shingles and hats for new members of his organization are now ready. They may be picked up at the office of Miss Helen Bottorf, 102 Old Main.

The Imaginary Invalid

By Richard Frontman

The genius of one of the greatest writers of comedy in the world's history was revealed to the State College audience last weekend when the Penn State Players presented Moliere's "The Imaginary Invalid."

Some of the so-called writers of comedy of the present day theatre would do themselves and the entire theatrical world a great favor by studying Moliere and discovering just what it is that constitutes true humor.

I am referring particularly to the authors who present us with the lemons that so often appear on our movie screens.

There is no doubt that "The Imaginary Invalid" is great stuff. Its greatness becomes particularly apparent when we realize that it still captures the audience's at-

tention even though it was written more than two centuries ago for an entirely different audience.

Furthermore, the play has lost a great deal of its rhythm and vitality, as does all literature, in transition. In its well drawn although exaggerated characters, in its sound construction, and, above all in its "thoughtful humor," "The Imaginary Invalid" is excellent theatre.

The feature of the Players' production of the play was not any specific actor or actress, but instead a lavish and colorful setting, designed by Duffield Sipes under the supervision of Mrs. Dorothy Scott.

Those of us who have been watching Players' production for the past few years realize that very seldom does Mrs. Scott fail to provide the shows with su-

(Continued on page two)