

PSCA Campus Campaign Leaders



JOANNE RORABACH



DR. MOYER



FRED KECKER

The student-faculty campaign for an over-all goal of \$5,000 has been divided between three general chairmen: Faculty, Dr. James Moyer; Men students, Fred Kecker; and Women students, Jo Anne Rorabach. Listed below are the section chairmen and division leaders of the Drive:

MEN

Section I. Chairman: Gayle Gearhart, Division 1, Lloyd Black, Division 2, John Griffith, Division 3, Ed West.

Section II. Chairman: Mark Del Vecchio; Division 1, Ray Robinson, Division 2, Paul Wilkins, Division 3, Frank Richardson, Division 4 (to be selected), Division 5 (to be selected)

Section III. Chairman: Division 1, Fred Barrouk, Division 2, Carl Lawrence, Division 3, Jim Warner, Division 4, Robert Humphrey, Division 5, Rudolph Branneka, Division 6, Jack Bryer.

Section IV. Chairman: Ralph Harris, Division 1, Stanley Coville, Division 2, Walter Pascoe, Division 3, Ralph Cromleigh, Division 4, Grover Cleveland, Division 5 (to be selected).

Section V. Chairman: Anthur Miller, Division 1, George Jones and Bud Thomas, Division 2, Ernest Nagy and Ed Trabold, Division 3, Edward LeFevre, Division 4, James McNall, Division 5, Richard Mauthe, Bob Stokes and Robert Duffield.

Section VI. Chairman: Emory Brown (Pollock Circle), Dorm 1, Elvin Birth, Dorm 2, Don Foreman, Dorm 3, Alfred Siegler, Dorm 4, Ray Heimbaeh, Dorm 5, George Lychkoff, Dorm 6, Clinton Brooks, Dorm 7, Fred Chusid, Dorm 8, Albert Vigilante, Dorm 9, Ed Awater, Dorm 10, J. Hartman, Dorm 11, Charles Brackbill, Dorm 12, John Anderson, Dorm 13, Leon Myers, Dorm 14, (to be selected).

Section VII. One or more solicitors have been procured for each of the seven zones in the Windcrest community.

WOMEN

Section I. Chairman: Phyllis James, (Atherton Hall), Division 1, Jean Farley, Division 2, Norma Van Tuyle, Division 3, Marjorie Billstein, Division 4, Lois Reese.

Section II. Chairman: Patricia Kinkead (Tri-Dorms and Woman's Bldg), Division 1, Bonnie Lee Sherrill, Division 2, Jeanne Richards, Division 3, Janet Kurtz, Division 4, Jane Fouracre.

Section III. Chairman: Jane Healy (Grange, McAlister Hall, Sorority and Practice Houses), Division 1, Jean Homan, Division 2, Beverly Joyce, Division 3, Doris Dittman.

Section IV. Chairman: Jean Hunger, Division 1, Ruth Gilmore, Division 2, Joan Cushman.

Section V. Chairman: Carolyn Currier, Division 1, Russella Adamiatz, Division 2, Joan Pepper.

FACULTY

School chairmen—School of Agriculture (to be selected), Administration, (Alan Wierman, School of Engineering, A. P. Powell, School of Education, Mary Jane Wyland, School of Chemistry and Physics, (to be selected), School of Mineral Industries (to be selected), School of Physical Education, Ray Conger, School of Liberal Arts, Kent Forster.

Brunner Heads Directing Body

Dr. Henry S. Brunner is the able chairman of the Board of Directors, administrative body of the PSCA. Those who are members of the executive committee headed by Dr. Brunner include: Dr. George Simpson, vice-chairman; James T. Smith, secretary; MacDonald Hesbner, Jr., treasurer; Dr. John Harkins, assistant treasurer; and J. Orvis Keller, chairman of the finance committee.

Other members of the Board serving in various capacities are: Dean Emeritus Ralph Watts, Dr. Arnold Currier, Prof. Royal Gerhardt, Dr. James Moyer, Prof. Hummel Fishburn, Dr. Harriet Harry, Dr. Fred Lininger, Prof. Mildred Larson, John Henry Frizzell, Dr. W. V. Dennis, Prof. Harriett Nesbitt, Dr. James Shigley, Prof. Seth Russell, Prof. Gilma Olson, Rev. Robert Eads, Rev. John Peabody, Rev. A. S. Asendorf, Rev. Donald Carruthers, Dean Pearl Weston, Dean A. R. Warnock, Stanley Coville, George Cleveland, Michael Rosenberger, Violet Gillespie, Jerry Miller, and Phyllis James.

Election of seventeen members of the Board will come on April 13, 1947 at the Annual Dinner Meeting of the Penn State Christian Association. Dr. A. Wehrli, popular and dynamic speaker has been procured for this highlight of the C. A. year.

Prexy

For more than seventy years the Christian Association has been an important factor in the lives of Penn State students. Over this long period of time it has demonstrated its value through a strong program of worthwhile activities. It continues to deserve our help and I feel sure it will receive the support of this community in its 1946 financial campaign.

RALPH D. HETZEL

IFC President Says

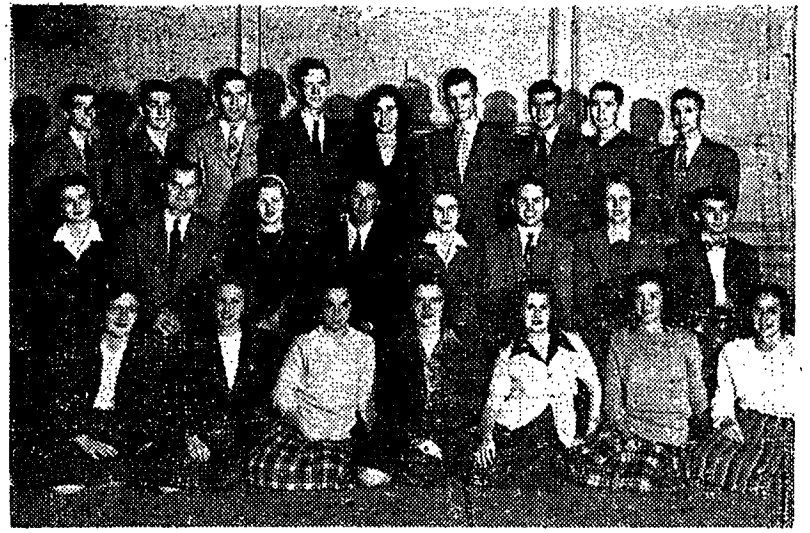
In speaking for fraternities on this campus, I feel that all members will support the Penn State Christian Association in both effort and financial aid as they have done in the past.

Signed, John F. Lloyd
President of IFC

The Penn State Christian Association is one of approximately 80 such organizations on as many campuses in the Middle Atlantic Region which embraces Pennsylvania and all its colleges and universities plus West Virginia, Maryland and Delaware.

During the winter of 1944-45 the PSCA featured Sunday Afternoon Class A sound films for an average attendance of 700 service personnel. Two shows each afternoon plus a big openhouse was the rule.

Did you know that during the last year of PSCA activity 66 major projects were sponsored, 17,879 students and faculty attended them, and 1078 persons served on committees.



Nine Cabinet Commissions, Committees Plan 50 Projects

Numbering 24 members in all, the Student Cabinet of the Penn State Christian Association is composed of an Executive Committee and the following Commissions and Committees, all of which plan series of projects for the year. Some of the leading programs will be listed here. The executive committee of the Cabinet is composed of Stanley Coville, president; Robert Foote, vice-president; Violet Gillespie, secretary; Phyllis James, recording secretary; and George Cleveland, treasurer. James Warner is area chairman of the Middle Atlantic Region of the Student Christian Movement.

Commission I, Intercollegiate and World Fellowship. Chairman: Jerry Miller and Carolyn Currier. Activities: Selecting and sending delegations to Area Conference at Bucknell University, the National Student Assembly at Urbana, Illinois, and Kanestate Regional Conference.

Presenting the work of the World Student Christian Federation through persons like Andrais Schanke. . . . Halloween, Christmas, Valentine, St. Patrick's Day parties held for Foreign Students to show them American customs. . . . The World Student Service Fund Drive, initiated for needy students abroad.

Commission II, Organized Groups. Chairman: Phoebe Forrest and Mark Del Vecchio. Activities: PSCA Roundup programs for ideas, food and fun twice a month with the next coming on December 10. . . . So far such programs have included "Foreign Policies of Wallace vs. Byrnes" and "The Pro's and Con's of Paying Athletes." . . . Inauguration of a new program called "Campus Couples Club" with meetings twice a month inclusive of planned recreation and valuable discussion.

Commission III, Religious Emphasis. Chairman: Patricia Woods and Ted Williams. Activities: Fireside Hour each Thursday at 4:20 p. m. for Bible Study led by Mrs. Malcolm Brown. . . . A World Series on Faiths. . . . Rockview Penitentiary Chapel program on December 8, Radio Worship programs. . . . All-College Thanksgiving Service at noon on November 26. . . . Lenten Vespers next Spring. . . . A Religion-in-Life-Week in March.

Commission IV, Community Service. Chairman: Paul Wilkins and Gene Gilmore. Activities: The Toy Lend Library at Windcrest. . . . Christmas parties for children in underprivileged rural areas. . . . Social Inquiry trips to Washington, D. C. . . . Clothing Drive for Europe's destitute. . . . Suggestions for summer work in camps or tension areas.

Commission V, Campus Affairs. Chairman: Michael Rosenberger and Joan of wartime Campus News Review each Thursday at 6:20 p. m. in Atherton Lounge featuring weekly news report by selected professor with comments. . . . Student-Faculty relations improved through Fireside Sessions in fraternities, other living units, etc., for frank discussion of chosen question. . . . A Marriage Institute next Spring with pertinent discussion on Courtship, Marriage and the Family.

Commission VI, Labor and Race Relations. Chairman: Sam Harvey and Jean Moore. Activities: Previews of the life and music of Roland Hayes. . . . Inter-racial coffee hours. . . . Planned discussion about national and international relations.

meetings on ways to lessen race tensions . . . procuring "Penn Pals" for international correspondence.

Personnel Committee. Chairman: Patricia Kinkead and Ralph Harris. Activities: Finding and relating interested students to Commissions and projects . . . keeping an active membership file . . . helping students find their place in the work of the Association and campus.

Publicity Committee. Each Commission has a chairman of publicity, all of whom from the different Commissions form the publicity committee. The Nittygrain Lines, posters and news stories are part of its work.

Watts Lodge Committee. Chairman: Barbara Keefe and Ralph Cromleigh. Activities: All-College Cabin parties . . . Hikes . . . Maintenance of the Cabin . . . Square Dancing and special outdoor recreation.

8-10 Attend CA Assembly

A delegation of eight or ten students is expected to represent the Penn State Christian Association at the National Student Assembly at the University of Illinois Dec. 27-Jan. 3. Present at the Assembly will be about 2000 members of student YMCA's and YWCA's from all over the United States, fraternal delegates representing church and other student groups, and students from other countries. The Penn State Christian Association is a combined student YM and YW.

The National Student Assembly is the "town meeting" of the Student Christian Association Movement, and makes it possible for representatives of all associations to meet and determine policy for the movement for the next three or four years. Such issues as world organization, racial equality, and religion in higher education will be discussed and statements of policy will be voted upon.

Plan Addresses
Although the primary function of the Assembly is legislative, a great amount of time will be devoted to such highlights as platform addresses by Dr. Albert Currier of Yale Divinity School and Charles Bolte of the American Veterans Committee; worship services led by Dr. Howard Thurman co-pastor of an Interracial Church at San Francisco; and Bible study using material prepared with the guidance of Dr. John Knox and Dr. James Meilenburg, two of the nation's leading Bible scholars.

Recreation and singing will play an important part in the program, making it possible for the delegates to become acquainted with those from other parts of the country. As a fellow of the Danforth Foundation, Mary Ann Matton, recent graduate of the University of Nebraska and former co-chairman of the Rocky-Mountain Region of the Student Christian Movement, will preside as co-chairman of the National Student Assembly, December 27. Her office is at 304 Old Main where usually one finds a number of students congregated during sandwich hours or in which she is busy counseling the project plans of Commission I, Intercollegiate and World Fellowship.

Plan For Annual Christmas Sing

A campus tradition covering many years, the Annual Christmas Carol Sing has been scheduled for eight o'clock the evening of Thursday, December 19.

Under the direction of the PSCA Commission on Campus Affairs headed by Jo Anne Rorabach and Michael Rosenberger, this popular annual event has each year drawn crowds of 2500 and 3500 to sing the many familiar carols the words of which are flashed on a large screen set between the two middle pillars of Old Main.

Dean of Women

In this post-war world, every student should be afforded a place where he may balance work with play, develop spiritual strength, and serve the campus.

The PSCA offers students such a place. It gives opportunity for self-realization and self-expression and sets forth Christian principles as the ideals of service. Its program culminates in new friendships, ideas, and leadership responsibilities.

May students, faculty, and friends of the College assist the PSCA campaign in reaching its goal.

PEARLE O. WESTON

CA Commission Plans New Toy Loan Library

The Toy Loan Library for Windcrest children is taking shape under the direction of the PSCA Community Service Commission, and through cooperation with the Girl Scouts and the Elementary Education Club.

The Windcrest committee, composed of Mrs. Leo Fiedorick, Mrs. James McGrath, Mrs. David Memeth, Mrs. Floyd Rose, and Mrs. Leslie Hackenberg, are planning to guide the Library, which will be located in the community center at Windcrest. Volunteers will be given an opportunity to build shelves, work on reconditioning toys and run the library.

Dean of Men

During the war periods when many other student agencies were necessarily inactive the Penn State Christian Association functioned with even more than usual activity to keep alive on this campus much that is thought to be traditional and fundamental in Penn State student life. For that reason and because of the present need of the student body for its continued services, PSCA should receive liberal financial support in its 1946-47 campaign for funds.

A. R. Warnock
Dean of Men