

PSCA Supplement

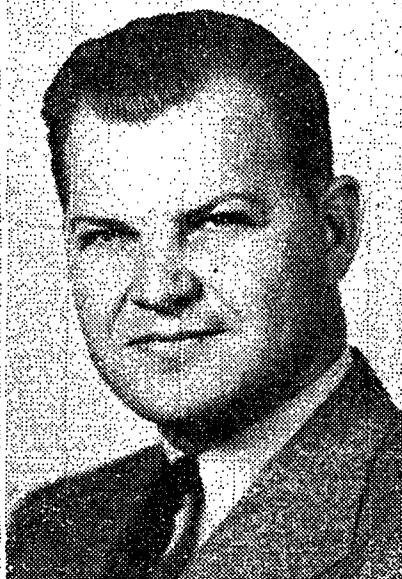
Published By The Penn State Christian Association

'Kick-off Rally' Starts PSCA Finance Drive

Smith, Farrow Head PSCA



BETTY FARROW



JAMES SMITH

Hailing from California where he was active in student social-religious service at the University of California and then at Pasadena, Jim Smith heads the program of the Penn State Christian Association as General Secretary. The women's Associate Secretary is Betty Farrow who counsels with a good share of the commissions deep in the planning of various projects.

Clara Urban, veteran's wife, keeps the office running smoothly, answers innumerable questions and serves thus in the double capacity as secretary-receptionist.

To be added to the professional staff is a man's Associate Secretary since the resignation of Gene Floyd recently to accept a position at Washburn University, Topeka, Kansas, as assistant to the president of that school. Last but not important is Ray Acheson, bookkeeper for the PSCA and the one who helps prepare the audit each year for publication.

"I am interested in the success of this campaign," said Mr. Smith, "not just because we will need the funds to operate successfully, but because it helps us acquaint ourselves with many students on the campus, and opens the avenue for a friendly place where all can meet on common ground regardless of creed, class or race. And this happens at a dance, on a service project or around the fireside discussing beliefs that matter. I urge you to give a gift that will lift."

Worship Workshop Plans Religious Programs

After finishing a war fought for freedom, we wish to re-examine the sources of the ideas of freedom and respect for the individual which lie in our religious teachings.

With the leadership of William Glenn and Martha Dennis, the Worship Workshop of Commission III has had opportunity to plan three unique services, one which was held in the Presbyterian Church, wherein a world-wide student litany was prepared by the students; then the group planned a radio worship service to be given over WMAJ, tomorrow morning. Plans are also underway for a service of worship to be given at the Penitentiary at the regular Sunday morning hour.

Getting a closer view of our religious beliefs is made available through the Bible Study Fireside Hour on Thursday afternoons from four to five o'clock under the able leadership of Mrs. Malcolm Brown. Co-chairmen Patricia Woods and Ted Williams have guided the committee in their planning of the PSCA "World Series" on Faiths Around the World which began with a lively discussion on Hinduism led by Rustum Roy of India. The next topic in the series is entitled "Confucianism."

Windcrest Aids Finance Drive

The Windcrest Council headed by Leo Feodorick, Burgess, voted last Tuesday evening to join the Finance Campaign of the Penn State Christian Association and organize a solicitors' group from its community.

At a meeting last Wednesday night, James Smith, General Secretary of the PSCA, showed a movie entitled, "Football Thrills of 1945" in the Windcrest Community Hall after which the organization of the campaign by zones was discussed.

Plan Swimming Party
Carl Stokes, chairman of the Social-Recreation committee, reported that three definite programs for members of the Windcrest Community have been planned beginning with the mixed swimming party at the Glennland Pool next Tuesday evening, November 19.

A dance will be held in the Community Hall on December 6 and on December 12 a full-length feature sound movie will be shown. The committee composed of representatives from each of the seven zones of Windcrest is studying further programs for the community which will include social and recreational functions and discussions on vital issues of the day.

Stanley Gross, previous Burgess, and Francis Smith, PSCA Secretary, are ex-officio members of the Windcrest Campaign committee to procure funds for the welfare of the community along social and intellectual lines.

Veterans' Counselor Says

"One of the best things that the PSCA does is to create a place where a friendly atmosphere helps new arrivals make their first contacts on the Penn State campus."

Robert Galbraith

The PSCA belongs to the Middle Atlantic Region which in turn is one of ten such regions in the U. S. A.

Keller Outlines CA Annual Budget

J. Orvis Keller, chairman of the finance committee of the PSCA Board of Directors, has submitted herewith the annual budget adopted by the Board and beginning official operation as of last July 1, 1946.

The books of the Association are audited yearly by C. P. Rowland Co. of State College, and copies of such an audit together with a breakdown of Student Cabinet Project expenses may be procured from 304 Old Main.

ESTIMATED INCOME

The Pennsylvania State College	\$ 5,000.00
Student Contributions ..	3,500.00
Faculty and Administration	1,500.00
Alumni, Friends, Trustees	2,500.00
Parents	10.00
Lodge Fees	100.00
Endowment Fund Income	30.00
Book Store Sales	10.00
Miscellaneous	50.00
Student Mimeograph Service	40.00
From Previous Year's Balance	395.00
Total	\$12,635.00

ESTIMATED EXPENSES

Cabinet Special Projects ..	\$ 500.00
1. Intercollegiate and World Fellowship ..	275.00
2. Organized Groups ..	150.00
3. Religious Emphasis ..	100.00
4. Community Service ..	200.00
5. Campus Affairs	125.00
6. Labor and Race Relations	100.00
Publicity Committee ..	300.00
Personnel Committee ..	50.00
Watts Lodge Committee	200.00
Finance Solicitation ..	500.00
Contributions and Assessments	20.00
General Expense	450.00
Office Expense	300.00
Postage	200.00
Salaries (5)	8,725.00
Secretary Travel and Conferences	200.00
Bad Debts	25.00
Depreciation	215.00
Total	\$12,635.00

PSCA Offers Typewriter, Mimeograph Machine For Student, Club Use

Do you need 100 cards printed? Are you stewing around because you can't find someone to run off 300 copies of an important announcement or a letter your organization plans to put out? Do you need to type a stencil? Well, if you're asking these questions the PSCA has an answer for them, that is, if you can meet the requirements.

At your disposal in 304 Old Main is an automatic feed hand-operated mimeograph machine ready to do your needed printing. For the time being you will have to furnish your own stencil and paper. You can cut the stencil on one of the typewriters located in the PSCA for student use. And if you don't know how to use the mimeograph you may be instructed or hire a student operator to do the needed job. A small charge of ten cents per hundred sheets will be made to keep the co-operative mimeograph service supplied with ink and possible repairs to the machine.

Reservations for use of the machine must be made ahead of time at the PSCA office. If you are looking for some mimeographing to be done for your next meeting or dance, come up to the PSCA and do it yourself or have it done for a nominal fee.

Dr. Luccock Gives Address; Honey Boys Quartet Sings



DR. HALFORD E. LUCCOCK

Seeking a campus goal of \$5,000 the Penn State Christian Association will begin its annual finance drive with a "Kick-Off Rally" for all solicitors in the social room of the Presbyterian Church at 3 p.m. Sunday. Dr. Halford E. Luccock of Yale University Divinity School will give the rally speech.

JoAnne Roraback, Fred Kecker and Dr. James Moyer, respective chairmen of the women and men students and of the faculty and administrative personnel, will present the drive procedure in brief.

In the beginning of the afternoon's program refreshments will be served during which time all solicitors will receive their campaign packets. After a lively songfest various quartet numbers are to be presented by the Honey Boys, popular on the campus for their close harmony.

Tickets as Prizes

The official campaign committee composed of the chairmen and section leaders has decided to present to those soliciting the highest amount among the women, men and faculty two tickets each to the forthcoming Harvest Ball in Recreation Hall on December 7. The campaign has been set for a ten-day period ending November 27.

It was emphasized by the Drive Chairmen that contributions can be made in cash during the drive, or, in the case of students, can be made in the form of a pledge to be added to one's college fees payable next February. Since veterans do not pay college fees this way, they may pledge an amount to be paid directly to the PSCA office.

Cards Given Contributors

A membership card is given to each student, faculty, or staff person who contributes \$2.50 or more, and in addition entitles that person to national affiliation with the YMCA or YWCA. Less than the proposed amount entitles the person to general membership in the local organization. Full financial participation by every member of the campus will be sought to support an expanding program.

Lodge Provides Party Locale

Hiking and overnight cabin party headquarters for about 700 students every semester is the Ralph Watts Lodge, owned and maintained by the PSCA.

The Lodge, four miles south of State College located on the side of Tussey Ridge, is run for the purpose of inspirational and relaxing weekend parties. Each month the PSCA runs an All-College Cabin Party open to all students and other week-ends the Lodge is host to church student groups, fraternities, clubs, and other campus organizations.

Built in 1927

Ralph Watts Lodge became a reality in 1927 when, after procuring land from the Andy Lytle estate, William Kitchen, the staff secretary, together with others, raised most of the money for the building of a spacious rustic stone cabin which could accommodate forty men and women in its two dormitories. Heated by two sizeable fireplaces, the dining and living rooms of the Lodge are places of fellowship and inspiration to all who gather for games, square dancing and singing.

Chairmen of the maintenance committee are Barbara Keefe and Ralph Cromleigh, who lead in planning all-college functions for the cabin and in keeping it in constant repair.

'Frosh Bible' Greeted Befuddled Freshmen; Re-Orients Veterans

For 52 years bewildered and burdened freshmen have found aid in the Student Handbook nicknamed the "Frosh Bible." With this campus necessity as their guide, generations of new students have carried fuel to victory bonfires, participated in class feuds, jumped at the words "But-ton Frosh," and have seen green dinks in nightmares.

Becomes Vet Guide

And even though 1946-47 sees no Freshman Class gracing our campus, the "Bible" became a Veteran's Handbook with pertinent information for the many fellows returning to the campus after three or four years' service.

Carrying information about fraternities, sororities, All-College Cabinet, religious organizations, independent groups and a host of other campus organizations, this small book contains school cheers, songs and exclusive information for the returning veteran student. Available copies may be had free of charge by any student at the PSCA desk.

Name Editor in January

In January of 1947 the Publicity Committee of the PSCA Student Cabinet will name the editor for the 1947-48 Penn State Handbook who will then select his own executive staff. Candidates may leave their names at the PSCA office. With the invasion of the largest sophomore class in the history of the school next Fall, there will be a great need for the "Sophomore Bible" to help orient the new student to campus life and State College.

WSGA Prexy

In play, work, service, and fellowship, the Penn State Christian Association holds an important place. Activities extending from the C. A. are so many and varied that every student may find an outlet for his interests and abilities, and an inspiration to extend his services and fellowship beyond the campus and college limits.

The PSCA has continued to serve students through peace and war whether or not they have been an integral part of its organization. It is definitely an organization to which every Penn Stater should feel he has contributed.

Mary Lou Waygood
WSGA President