

# 'Angel Street' Review—

(Continued from page one)  
Broadway and Hollywood, but that of a theatre in an academic institution. In view of this, can Angel Street be lauded a success? Have we the right to say it was well done merely for the sake of five parts well played, and one set well constructed? Could even Bernhardt and Barrymore be justified? "The powers that choose" were niggardly this time; a set that required no changes, and a cast of five is not the kind of productions we should have.

The show did go on—and for the handful who worked so diligently a word of praise and thanks is due. As a member of the theatre-going public I appreciate the pleasant evening they afforded me.

**Laurel For Hank**  
To Henrietta Campitell a laurel wreath for one of the best performances seen in many a month. As the maddened Mrs. Manningham she played her part excellently. With only one octave of emotion to represent her, she managed to vary the notes she struck so well, that we never tired of her.

Her voice, her gestures, stage poise, and emotions were all part of an artistic presentation calling for extreme finesse to prevent its being overdone and turning into flop. Miss Campitell kept the balance and held the audience in her hand from the moment she tried to soothe her napping husband until she shriekingly turned him over to the police.

**Baum's Way**  
Martin Baum, as Mr. Manningham, chose to overplay his part a bit too much, and I fear was quite outacted by the Mrs. The melodramatic villain stroking small circles into the velvet collar of his dressing gown as he drove his wife out of her senses went a bit too far. At times he put terror in the audience, but his role was too long for the cold-blooded brutality he gave it.

The hiss that greeted him when he reappeared showed that his audience was unconvinced by the performance. The Mr. Manningham Martin Baum gave us posed no question to his audience. From the outset, he was a blackguard, and thus a portion of suspense was lost.

The cocky little housemaid Nancy was most convincingly characterized by Ruthye Cohen. Her jealousy, contempt, arrogance, and passion were so very well expressed that we felt inclined to slap her whenever she appeared.

**Rough Rough**  
Walter St. Clair, the hero of the play as Mr. Rough, a Sherlock Holmesish character, gave a passable performance. He stumbled over his lines a noticeable number of times, and made the gross error of obviously going back for them. Although he lacked the conviction of some of the other actors and made us recall that we were watching a play,

he did hold up his part with some semblance of character.

Barbara Davis, as Elizabeth, played her stiff and stilted assignment well, putting everything required into it, but by and large that was not too much.

**Music Adds**  
Overture music before the play and between the acts added immeasurably to the dramatic effect created in Schwab Auditorium last weekend. When the curtain parted we were pleased to see a

set that was another gem the Players so consistently turn out. The temperamental gas lights were a credit to an excellent crew. Except for the anachronism of Mr. Rough's plastic suspenders, there was hardly a technical flaw in the whole show.

To the Houseparty Weekenders and their dates the Players gave a well rounded performance that added to the resplendence of a big State weekend. As a production it was fine—as a vehicle, we must take our stand with the loyal opposition.

## News Briefs

(Continued from page one)  
**Grange Initiates**

Nineteen members will be initiated into the Penn State Grange No. 1707 tonight in 100 Hort at 7:30.

The new initiates are Randall Campbell, Joseph Featro, Warren Frey, Hays Gamble, Polly Goodwin, Joseph Gray, Carrol Hess, Geraldine Hindenach, Rachel Hindenach, Fred Hughes, Coyte Hunter, Alice Marcinowski, Jean McCreary, Mary Metzger, William Robinson, Horace Siemert, Norma Stephens, Francis Tolan and Mary York.

## IMPORTANT ANNOUNCEMENT

### SPECIAL GREYHOUND BUS SERVICE AGAIN AVAILABLE TO PENN STATE STUDENTS

PENNSYLVANIA GREYHOUND LINES wish to announce to students that special buses will operate from State College, November 27th, 1946 to points on the Pittsburgh, Scranton, New York City, and Philadelphia Divisions.

Reservations for seats on the Special buses will be made with the purchase of your ticket, and should be made as far in advance as possible, but not later than 11:00 P.M. of November 26th, 1946.

Special buses will leave from the Campus Parking Lot located south of the Recreation Building at 12:45 P.M.

For tickets and information call at the GREYHOUND POST HOUSE, 146 North Atherton Street. PHONE 4181.

## COMMON SENSE CLUB

### JAZZ CONCERT

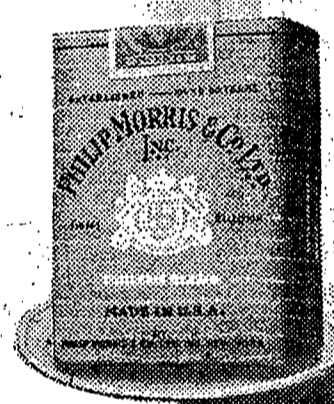
with  
**ART HODES**  
**SIDNEY BECHET**  
**'POPS' FOSTER**  
**'BABY' DODDS**

and others  
**MONDAY**  
**November 18**  
**8 p.m. Schwab Aud.**

Tickets \$1.00 tax incl.  
**ON SALE**  
Student Union  
Music Room  
Book and Record Shop

# The Flavor's All Yours...

when you smoke  
**PHILIP MORRIS!**



## CLEAN, FRESH, PURE

### America's FINEST Cigarette!

First smoke in the morning or last one at night—the *flavor's ALL yours*, when you smoke PHILIP MORRIS! And here's why...

There's an *important difference* in PHILIP MORRIS manufacture that makes PHILIP MORRIS taste better—*smoke better*—because it lets the FULL FLAVOR of the world's finest tobaccos come through for your *complete enjoyment*—*clean, fresh, pure!*

Try PHILIP MORRIS—you, too, will agree that PHILIP MORRIS is *America's FINEST Cigarette!*

**NO OTHER CIGARETTE CAN MAKE THIS STATEMENT!**  
Of all the leading cigarettes, PHILIP MORRIS is the *only* cigarette with an *exclusive difference* in manufacture—recognized by eminent medical authorities *as being to the advantage of those who smoke!*

# CALL FOR PHILIP MORRIS

**ALWAYS BETTER... BETTER ALL WAYS**

NOW AT WARNER THEATRES

**CATHAUM STATE THEATRE**

GARY COOPER  
**"The Plainsman"**  
with Jean Arthur

**"White Tie and Tails"**  
with Dan Duryea  
Ella Raines  
Wm. Bendix

Van Johnson  
**Easy to Wed**  
with Esther Williams

7 p.m.