

Gridders Gird For Temple

McCown, Scherer Out For Season's Duration

Continuing a rivalry started in 1931, Temple's Owls will invade the Nittany Lion den to meet Penn State for the eighth time Saturday.

With the injured list constantly growing, Coach Bob Higgins is working his charges against Temple's tricky T-formation plays.

Halfback Bill Scherer and fleet Dick McCown both will be out of action for the duration of the season.

PATHS DANGEROUS

Scherer wrenched his ankle while walking along one of the campus paths on the way to football practice.

McCown, who skirted end for 22 yards to score a touchdown against Fordham, injured his shoulder in a practice scrimmage Tuesday.

Guard Steve Suhey and tackle Bill Kyle are still bothered by previous leg injuries and it is doubtful that they will see action against the Owls.

JOE IN UNIFORM

Larry Joe has shed his shoulder straps and was able to do some running at practice Tuesday, but it may be several weeks before he will be in shape to play.

For the wingback post, Jeff Durkota will again get the nod. Although Bob Urion along with Bud Davis saw action against Fordham, both are still being hampered by old leg injuries.

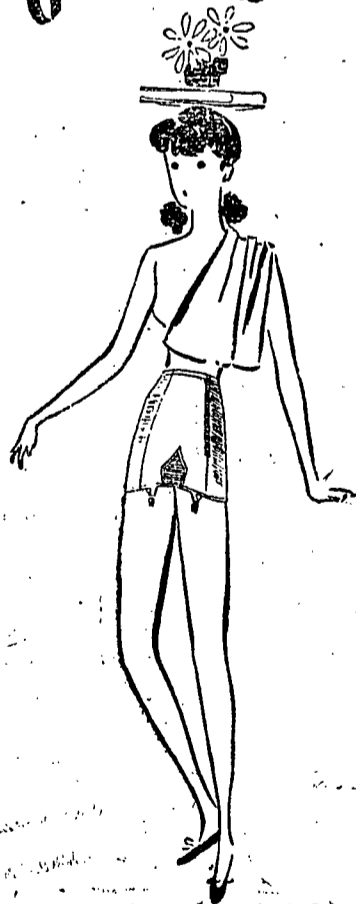
Joe Colone will be ready to start at fullback to round out the Lion backfield.

OWLS PLAN FEW CHANGES

Coach Ray Morrison is planning few changes for his team and the backfield consisting of Bob Gorton, Bud Sutton, Phil Slosburg, and Joe Neiman will remain intact.

Kappa Sigma fraternity, including both pledges and actives, is composed entirely of veterans.

whip into shape!
with a
pliant form



Looking forward to that important week-end? Better slip into a comfortable designed-for-juniors Pliantform and get yourself a slick city figure!

pliant form
FOUNDATIONS, INC.

1440 Broadway, New York, N. Y.

Pigskin Forecast

Following are Joe Harris' football predictions, with probable scores, for the coming weekend. Probable winners are listed at the left side.

FRIDAY, NOVEMBER 8, 1946

College of Pacific—San Jose State	13-6
Detroit U.—Villanova College	13-7
Miami U. (Fla.)—Miami U. (Ohio)	20-7
West Chester St. Tchrs.—Ithaca College	13-0

SATURDAY, NOVEMBER 9, 1946

Alabama—Louisiana State	20-13
Arizona U.—Santa Clara U.	26-13
Boston College—Georgetown U.	27-7
Boston U.—New Hampshire U.	14-6
Buffalo U.—Alfred U.	20-7
Catawba College—Newberry College	19-0
Cincinnati U.—Xavier U.	40-0
Connecticut U.—Rhode Island State	33-0
Cornell U.—Syracuse U.	20-7

Dayton U.—Chattanooga U.	20-6
Delaware U.—Bucknell U.	20-7
Denver U.—Wyoming U.	20-6
Dickinson College—Drexel I.	13-6
Duke U.—Wake Forest	14-7
Franklin & Marshall—Albright College	19-6
Furman U.—Virginia Military I.	13-7
Georgia Tech.—Navy	27-6
Georgia U.—Florida U.	34-0

Hardin-Simmons U.—West Texas Statc.	27-6
Harvard U.—Dartmouth	27-6
Holy Cross—Colgate U.	7-0
Iowa State—Drake U.	20-6
Kentucky U.—Marquette U.	20-7
Lehigh U.—New York U.	13-6
Massachusetts State—C.C.N.Y.	33-0
Michigan U.—Michigan State	20-0
Minnesota U.—Purdue U.	20-7
Mississippi State—Auburn Poly I.	20-7
Missouri U.—Colorado U.	20-7
Muhlenberg College—Gettysburg College	20-0

Nevada U.—Santa Barbara	27-6
Niagara U.—Hobart College	40-0
North Carolina State—Vanderbilt U.	20-6
Northwestern U.—Indiana U.	20-7
NOTRE DAME—ARMY	27-14
Oberlin College—DePauw U.	19-0
Ohio State—Pitt	34-0
Ohio U.—Baldwin-Wallace	20-0

Last week's College Resumé: 64 right; 16 wrong; (two ties). 80% accuracy.
Season's College Recapitulation: 367 right; 88 wrong; (18 ties). 80.8% accuracy.

Oklahoma U.—Kansas U.	27-7
Oregon State—Idaho U.	27-0
PENN STATE—TEMPLE U.	27-0
Penn—Columbia U.	33-7
Princeton U.—U. of Virginia	14-7
Rice—Arkansas U.	20-13
Richmond U.—Davidson College	20-0
Rutgers U.—Lafayette College	34-0
St. Bonaventure—Bowling Green	20-7
San Francisco U.—Kansas State	20-6
South Carolina U.—Maryland U.	20-13
Southern California—California	27-13
Stanford—Washington U.	20-7

Tennessee—Mississippi	27-7
Texas A.&M.—S. Methodist U.	14-7
Texas Tech—New Mexico U.	34-0
Tulane—Clemson College	20-13
Texas U.—Baylor U.	34-0
Tulsa U.—Oklahoma A.&M.	20-13
Union College—Middlebury C.	6-0
U.S. Coast Guard Academy—Tufts	19-6
U.C.L.A.—Oregon U.	27-0
Utah State—Brigham Young U.	20-13
Utah U.—Colorado A.&M.	33-6
Virginia Poly I.—Washington & Lee	21-6
Wesleyan U.—Williams College	26-0
Western Maryland—Randolph-Macon	33-0
West Virginia U.—Fordham	20-0
Wichita U.—St. Louis U.	20-6
William & Mary—No. Carolina U.	20-14
Wisconsin U.—Iowa U.	27-7
Yale—Brown U.	27-0

SUNDAY, NOVEMBER 10, 1946

NATIONAL PRO LEAGUE

Chicago Bears—Los Angeles Rams	35-14
Chicago Cards—Green Bay Packers	21-14
Philadelphia Eagles—New York Giants	21-7
Pittsburgh Steelers—Detroit Lions	14-7
Washington Redskins—Boston Yanks	21-14

ALL-AMERICAN CONFERENCE

Brooklyn Dodgers—Buffalo Bisons	21-14
Cleveland Browns—San Francisco '49ers	28-21
New York Yankees—Los Angeles Dons	24-21

MONDAY, NOVEMBER 11, 1946

Chicago Rockets—Miami Seahawks	28-7
--------------------------------	------

Independent IM Hoop League Organizes

Independent men wishing to form seven-man basketball teams to enter in the Independent Intramurals, have until November 19 to enter their team rosters at 213 Recreation Hall. A fee of \$1 will be charged per team.

Independent men who wish to play on an intramural team should sign up at Student Union desk before November 18; they will be formed into teams by the Independent Men's Association, and entered at Rec Hall.

All men who have not previously obtained health examination certificates from the dispensary must do so before they are eligible to play in basketball intramurals.

IM Schedules - -

Less than twenty independent and fraternity remain in the running, as the College intramural football tourney enters its third round of play.

Tonight's schedule pits Pi Kappa Alpha against Phi Delta Theta, Sigma Phi Sigma versus the winner of last night's battle between Sigma Pi and Tau Kappa Epsilon, and Dorm 8 vs Straight Shooters.

Intramural swimming is now in its second round. The schedule tonight places Sigma Pi opposite Phi Sigma Kappa, Alpha Sigma Phi vs. Kappa Delta Rho, Alpha Chi Sigma vs. Alpha Phi Delta and Sigma Chi vs. Phi Sigma Delta.

DU's Maintain Bowling Lead

Delta Upsilon's bowling team held its lead for first place in the Fraternity Bowling League as the Phi Sigma Deltas forfeited to the D U's Tuesday night at the Bowling Center.

Both Beta Theta Pi and Delta Chi continued in a tie for second place when the Betas set back Delta Tau Delta and the Delta Chi's defeated Theta Xi.

DV's Retain Lead - -

Team	Won	Lost
Delta Upsilon	15	1
Beta Theta Pi	13	3
Delta Chi	13	3
Lambda Chi Alpha	10	6
Tau Kappa Epsilon	8	4
Theta Chi	9	7
Triangle	7	9
Beta Sigma Rho	6	10
Sigma Phi Sigma	7	9
Theta Xi	6	10

The Delta Chi quintet again walked off with top honors as they bowled high three game team total, high individual three game total, and high single game scores.

Jim Gleason led the Delta Chi's to their 2633 to 2313 win over the Theta Xi's, rolling scores of 149, 214, and 224 for a three-game total of 587. Ken White took high single game scoring honors with a 244 in his second game.

Phi Kappa Sigma's Moore led his team to a 2288-2158 win over Triangle as he bowled 201, 196, and 172 for a total of 569, second

highest score of the evening. Tau Kappa Epsilon picked up four points in league standings, defeating Beta Sigma Rho in three straight games, and outscoring thme 2335 to 2177.

Alpha Chi Sigma triumphed over the Theta Chi's, three to one, but scores for the game were not available.

Sports Shorts

Three Lion players—two backs and one lineman—wear contact lenses on the football field. The lineman is Howard Caskey, while the backs are Wallace Triplett and Carl Sturges.

This year's football centers ran true to tradition at Penn State. Bronco Kosanovich starred in the East-West game on New Year's Day, while Oogie Martella was a stand-out and captain of the 1945 Camp Lee eleven.

Chi Phi Wins IM X-Country

By a slim one point margin Chi Phi intramural cross-country team squeezed out a 33-34 win over the Delta Upsilon harriers yesterday afternoon on the golf course.

First man across the finish line was Dick Herr, Chi Phi, who ran the mile and a half course in nine minutes, 39½ seconds.

Jack Tighe, Delta Upsilon, finished second, five yards behind Herr. Yetter of Alpha Zeta placed third, followed by Staebing, Boedecker, Hoyt, Turcaso, Truex, Hanford, and Peters. There were 29 entrants in the race.

Team scoring was as follows: Chi Phi, 33; Delta Upsilon, 34; Pi Kappa Alpha, 37; Alpha Phi Delta, 38, and Phi Delta Theta, 39.

Jack Harper

HATTER HABERDASHER TAILOR

CUT DOWN NICOTINE

Frank
MEDICO
FILTERED SMOKING

- Replaceable filter in new Frank Medico Cigarette Holders, filters the smoke.
- Cuts down nicotine.
- Cuts down irritating tars.
- In zephyrweight aluminum.
- Special styles for men and women.
- \$2 with 10 filters, handy pouch and gift box.

S. M. FRANK & CO., INC., NEW YORK 22

BOWLERS—We Are Now Open Afternoons For Your Convenience. Yes, Still 20 Cents A Game

DUX CLUB

128 S. PUGH STREET

SATURDAY NITE
EVERYTHING POINTS To SKYTOP
Sonny Roye and His Orch.
Skytop
X-GI Owned and Operated

RADIO OR RECORD PLAYER NEED REPAIRS?

BRING IT TO OUR RADIO EXPERT

The Regular Repair Man Is Back To Get Your Radio In Good Order. Why Not Bring It In Today

THE MUSIC ROOM
203 E BEAVER AVE. STATE COLLEGE
PHONE 2311