

**Student Union Project**

**Building Boom Begins, Elsewhere**

This is the second in a series of articles discussing the tentative plans of the proposed Student Union Building. Collegian would appreciate any suggestions by students, faculty members, and alumni that may aid in the betterment of the project.

By LARRY FOSTER

The College officials apparently sympathize with the students' desire to launch a student union project on campus. Whether or not they fully appreciate the need for such a building is still a doubtful issue; they have never endeavored to prove it by taking action. Up to the present, past generations of State's undergraduates fought a losing battle because their campaigns never gained enough momentum to stimulate action where it was needed.

Representing the students, Collegian and All-College Cabinet have combined efforts to get the project underway. Their success depends mainly on two factors: how interested the 5,000 students

on campus are in having a Memorial Union building, and the willingness of the Board of Trustees to take action at their next meeting on January 25, 26 in Harrisburg.

**Which Will It Be?**

If given the "go" signal by the board, the Alumni Association can organize their gigantic fund raising campaign, and the project will be officially underway. If the student appeal is spurned, Penn State will for the present remain one of the few major colleges in the country lacking a center for student activities.

The great significance of a Union building was most effectively expressed by the late Glenn Frank, president of the University of Wisconsin, when he said: "The Memorial Union building will give us a 'living room' that will convert the University from a 'house of learning' into a 'home of learning'."

We at Penn State are not alone in our endeavors. At no time in the 50 year history of college unions in America has there been such widespread interest in the planning and construction of Student Union buildings. The Association of College Unions reports that almost daily, word comes to them that another institution is exploring the possibilities or actually have their project in the blueprint stage.

**Why Not Here?**

Virginia State College, Petersburg, Va., has started planning activity; the architect for Ohio Wesleyan is at work on the preliminary studies; there is a proposal in New York State to set up unions in a number of the State Teachers' Colleges. The University of Connecticut has \$600,-

000 available for the construction of a Student Union which they consider a "must" building. Iowa State students have voted to increase their semester fee in order to finance a large addition to the present million dollar Iowa State Union. Almost a year ago the Oklahoma State legislature cleared the way for building additions costing \$900,000 for the present Oklahoma Memorial Union.

There are at least 20 other institutions known to be making preliminary plans either for additions to the present union buildings or for the new post-war student centers. Among them are some of the smallest schools in the country.

If the students contemplate taking action, the time is now. Letters written to Collegian expressing views and opinions on the subject will be forwarded directly to members of the Board of Trustees. Also, by reminding your class officers that you are interested in seeing the project progress as rapidly as possible, you will be doing your individual part toward attaining our goal.

**Players—**

(Continued from page one)  
Harry Thomas, trumpets; Glenn Orndorf (NROTC), trombone; and William Reutti, drum and assistant conductor.

As an added attraction, Players has arranged to sell popcorn and peanuts in the auditorium between the numbers. A soft drink and pretzel booth will be maintained in the lobby. Sales people as well as band members and ushers will be dressed to fit the theme of the show. Captaining the ushers will be Carol Dieckmann.

**Crew Managers**

Heading the many backstage crews are: Dorothy Lebovitz and Mary Ann Mason, advertising; William Folwell, construction; Frances Glass, costume; Lee Shane, design; Marion Schein, lights; Betty Graeber, make-up; Shirley Wenger, paint; Ruth Hawkins, properties; and William Folwell, stage.

Pupils of the State College Junior and Senior High Schools have been invited to attend the final dress rehearsal on Thursday nights. Special-priced tickets are being sold to them through their individual schools.

**Library Likes Thrillers Too**

"Any juicy, hair-raising thriller will do. Just toss it in the collection and we'll catalogue it."

With this succinct plea a member of the Library staff asks all students on campus to add to the library's supply of mystery novels and booklets.

"We have quite a few books of this type now, but we'd like you to bring in any ten cent or 25 cent mysteries you want to get rid of. Everyone likes to read them, for they're in constant circulation. And you'll not only be helping yourself, but giving one of your fellow students the enjoyment you had from reading them," the librarian explained.

**Calendar**

**TODAY**

Collegian Junior and Senior Board meeting, 8 Carnegie Hall, 4:30 p.m.  
Sabbath Eve Services, Hillel Foundation, 7:30 p.m.  
Interfaith Council meeting, Hillel Foundation, 7:30 p.m.  
Campus Center Club, 304 Old Main, 8:30 p.m.  
Friars meeting, steps of Old Main, 12:45 p.m.

**TOMORROW**

Atherton Tea, Northwest Lounge, 3 to 5 p.m.  
Shabbos Tea, Hillel Foundation, 3:30 p.m.  
Wrestling match, with Coast Guard, Recreation Hall, 6:45 p.m.  
Lakonides party, White Hall, 7:30 to 10 p.m.  
"Snow Frolic," Hillel Foundation, 9 to 12 p.m.  
TMA and IWA dance, Recreation Hall, 9 to 12 p.m.

**SUNDAY**

Chapel, Schwab Auditorium, 11 a.m. Dr. Bernard C. Clausen, "The House I Live In."

**MONDAY**

Orchestra rehearsal, 117 Carnegie Hall, 7 p.m.  
4-H Club meeting, 418 Old Main, 7 to 9 p.m.  
Penn State Engineer meeting, 2 Armory, 7:30 p.m.  
Block and Bridle Club, 206 Agriculture, 7:30 p.m.  
Cwens meeting, WSGA Room, White Hall, 8:30 p.m.

**Hillel Foundation**

... will present the "Snow Frolic" from 9 to 12 o'clock tomorrow night, snow or no snow. There will be entertainment, with Benjamin Goreslick in charge, and refreshments will be served.

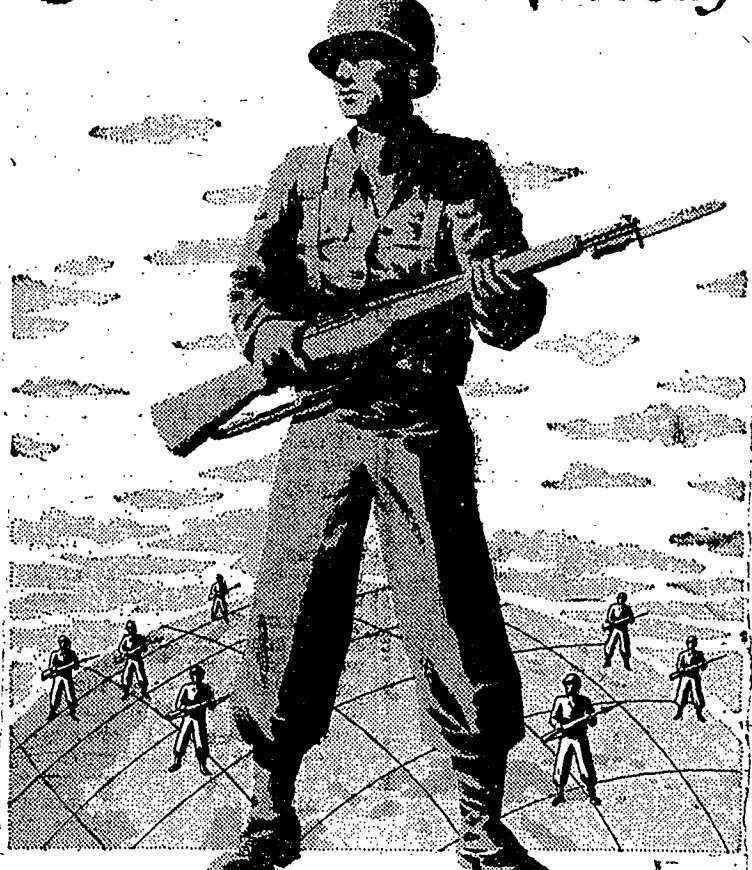
**Penn State Club**

... will entertain the girls of the Alpha Kappa Pi house, 328 E. Fairmount avenue, from 2:30 to 5:00 p.m. Sunday.

**IFC**

... duplicate bridge tournament will be held in the first floor lounge of Old Main at 1 p. m. tomorrow.

**Guardians of Victory**



Thousands of men are now enlisting in the Regular Army  
Join now and SEE THE JOB THROUGH!  
Choose your branch of service and overseas theater

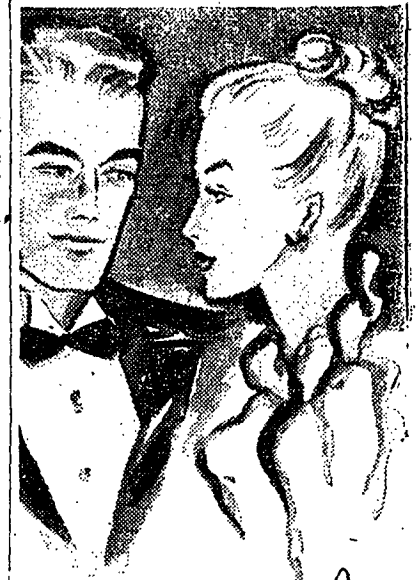
TRAVEL ☆ EDUCATION ☆ SECURITY ☆ CAREER

For full information call at U. S. Army Recruiting Office

U. S. ARMY RECRUITING STATION  
POST OFFICE BLDG. STATE COLLEGE

This space sponsored in the interests of national defense and as a public service by

**BOALSBURG BUS CO.**



*Spellbinder*



50¢ plus tax

**Just Red**  
for Lip Appeal

You don't need a soap box... leave it to a polished dance floor and The Season's RIGHT Red to win them over! Just Red is so right it's the only lipstick shade Roger & Gallet offer. On the lips, its beauty lasts—and how!

**X LIPSTICK ROGER & GALLET**

Perfume • Dry Perfume • Lip Ade • Toilet Soap



"Speaking of Characters!"

The hero of "Barefoot Boy with Cheek" is on the loose again. None other than Asa Hearthrug, Max Shulman's heroic cluck, "pointing his finely chiseled, windswept head unafraid into the future." Asa and his sweetheart, Lodestone, cavort thru pages crammed with howls and chuckles as they face the post-war world. Don't miss 'em!

**THE ZEBRA DERBY**  
by  
**MAX SHULMAN**  
**\$2.00**

**"HUNKY JOHNNY" by PENN STATE PROFESSOR ED NICHOLS**

This is the warm, touching story of the struggle of a boy to overcome prejudice against his Slovak background—and how he succeeds.

**\$2.50**

**KEELER'S**

**ANCHORAGE COFFEE SHOP**

210 W. College Ave.

STEAKS

CHOPS

SEAFOOD

SANDWICHES

GATERING TO BANQUETS AND PRIVATE PARTIES