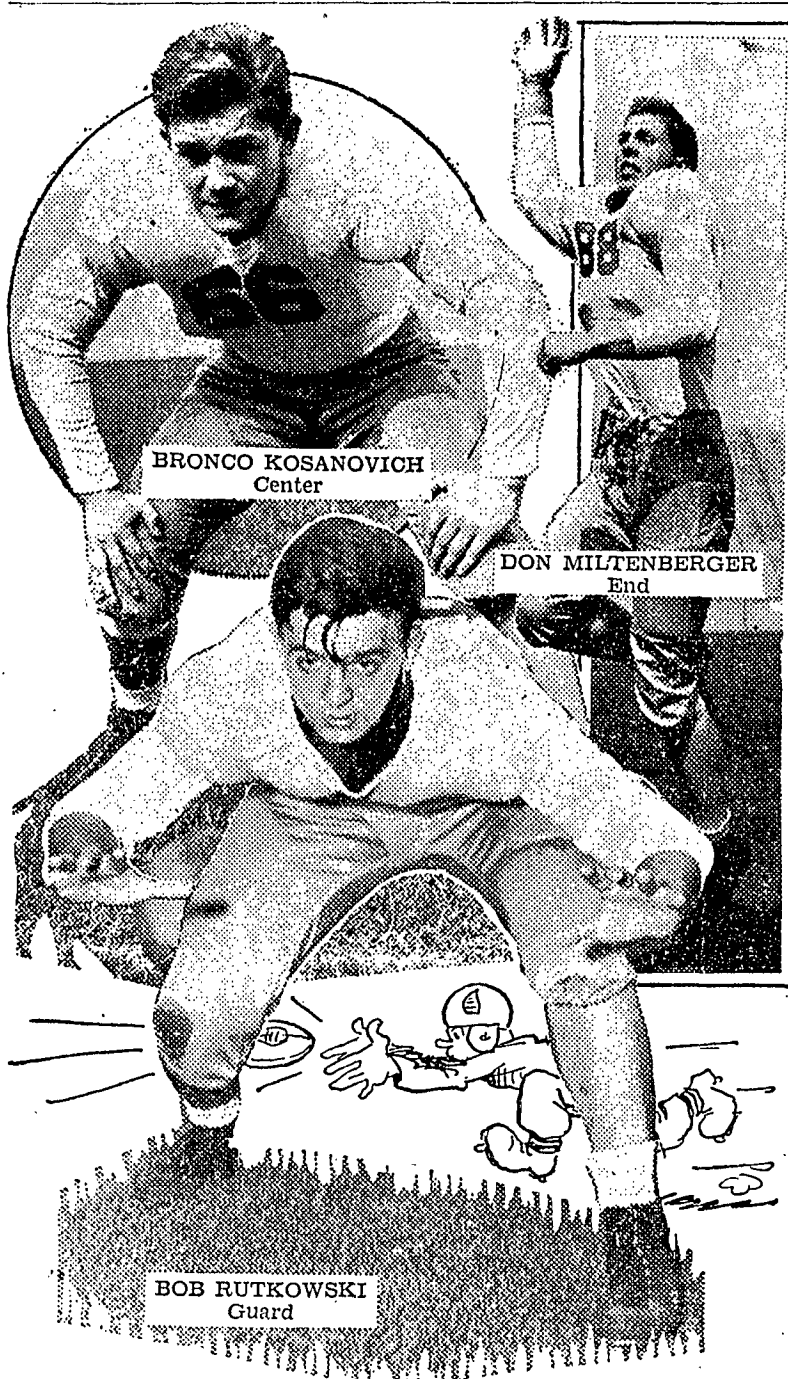


# Hold-Overs Buoy Lion Hopes

(Continued from page one) ember that it was Swarthmore's third tilt and Muhlenberg's first; this may have had a lot to do with the result. Every team makes a lot of mistakes in their opener and we'll make ours. With Ferrel in there throwing the ball, they'll always be a threat."

The Nittany linemen go into the game with a 22 pound advantage over their opponents. Starting for the Lions will be bronc Kosanovich at center, 195; Bob Gernand, 205, right end; Don Miltenberger, 215, left end; Bob Rutkowski, 205, right guard; Carl Dimmerling, 185, left guard; Marino Marchi, 220, right tackle; Johnny Nolan, 210, left tackle.

Reserve strength for the forward wall will come from men about even in ability and experience as the starters. This second "first string" consists of Bob McKoy or Chuck Drazehovich, center; Howard Caskey and John Finley, tackles; John Simon and Jim Matthews, guards; Sam Tam-



KOSANOVICH AND MILTENBERGER, both members of last year's all-freshman squad, promise to reach new heights on the 1945 Penn State eleven, while Rutkowski, also a hold-over and a veteran of the Fleet, looms as one of the best guards in the East.

## Hatmen, Notice

All active hatmen are requested to attend a pep rally tonight and the football game tomorrow to usher and officiate, Stanley Chadwin, president of Hat Societies Council, announced today.

buro and Ross Herron, ends. In a backfield plagued by injuries, Joe Tepsic is slated to do most of the ball carrying at tailback. Tepsic put on quite a display of passing in recent days and will spearhead State's aerial offensive. Ralph Ventresco will share the running and passing attack with the ex-Marine in the fullback slot. Starting wing back will be Larry Cooney, 17-year old veteran of last year's varsity, and Dino Taccalozzi will take over as quarterback.

With Wally Triplett and Bob Kritzer possibly sidelined by injuries, Jim Wolf will see plenty of action in relieving Tepsic. Wolf, speedy and tough, impressed the coaches with his touchdown run in Saturday's intra-squad game. Wing backs Larry Spencer and Chuck Willing are also ailing but will probably be in shape for tomorrow's contest. Additional reserve strength will come from freshmen Joe Fulcoly and Everett Fretz.

Most likely to see action at quarterback in relief roles are Charles Murray and Martin Veater, both frosh from Uniontown. Al Bellas, who has played steadily and well in scrimmages, will get first call as fullback after Ventresco. Tubby Lang, with his educated kicking toe, will also see plenty of service.

Three members of the Penn State athletic staff have served Uncle Sam as Army sports consultants.

## Saturday's Lineup

Penn State	Pos.	Muhlenberg
81 Miltenberger	LE	Pulczuk 12
70 Nolan	LT	Goetz 33
63 Dimmerling	LG	Turtzo 18
57 Kasanovich	C	Way 3
64 Rutkowski	RG	Burchfield 4
75 Marchi	RT	Moser 36
87 Gernand	RE	Staudinger 16
27 Taccalozzi	QB	Ferrel 34
45 Tepsic	LHB	Rubbert 7
15 Cooney	RHB	Heck 35
35 Ventresco	PB	Moomey 14

## Interest Lags in IF Ball

Both interest and activity bogged down in the Interfraternity softball tourney, as only five games were played in the last two weeks. Phi Sigma Delta took undisputed lead in League B by edging out Phi Delta Theta in the last inning on a couple of walks and a scratch hit, 2-1.

Alpha Phi Delta smeared Gamma Sigma Phi, 18-0; Sigma Chi overpowered Sigma Phi Epsilon, 13-3; Alpha Phi Delta polished off Phi Kappa Sigma, 13-4; and Sigma Pi swamped Sigma Phi Epsilon, 17-6.

## Jeffrey To Pick Starting Booters

The delayed return of Bill Jeffrey, has placed the responsibility of picking the starters for the opening soccer game with Muhlenberg on October 13 in the hands of assistant coaches Herb Mendt and John Hamilton.

The soccer mentor is slated to arrive at the College on October 1. This will allow less than two weeks for the final practice sessions.

Practice sessions have been conducted for the past week under the tutelage of Coaches Mendt and Hamilton. Particular changes in the style of practice is that of playing the strong forward line against a strong opposing back line. Coach Mendt stated that this style of practice will be continued so as to have the team in top shape against Muhlenberg.

The starting team is being whipped into shape but the decisions as to who will start in the seasons opener will rest with Coach Jeffrey. Probable starters will include Don Rider at center, with John Hamilton and Paul Pfluger playing the left inside and right outside respectively.

Herb Mendt will get the starting nod at right inside and it is not known who will play the right outside. Present plans are to shift Rene Rodriguez from the center

## Bks 9 Takes Top Position

Barracks 9 retained the number one spot in the V-12 touch football tournament by notching their fifth victory in a row. The win was registered over Barracks 36, and the score was 9-6. Previously, they had downed Barracks 37 on Les Jacobs' field goal in the last half, 3-0, and they blanked Barracks 26, aided by Bill McMaster's touchdown, 6-0.

In other games, Barracks 13 defeated Barracks 36, 13-6; Barracks 37 blanked Barracks 36, 12-0; and Barracks 37 whitewashed Barracks 13, 15-0.

Barracks 36 won over Barracks 13 by virtue of John Livingston's marker, 6-0, and Barracks 13 and Barracks 26 fought to a scoreless tie.

Team	Won	Lost	Tied
Barracks 9	5	0	0
Barracks 37	3	1	1
Barracks 13	2	3	1
Barracks 36	1	4	2
Barracks 26	0	3	2

position to right outside. Five men are vying for the starting role at the halfback positions. Competition is so keen between Elwood Stetler, Bob Rust, Tim Petroff and Ralph Sampala for the first string positions that the final decisions will be left to Coach Jeffrey.

## IMPORTANT ANNOUNCEMENT

PENNSYLVANIA GREYHOUND LINES wish to announce to all students that, in order to arrange accommodations for travel for this coming Fall Semester, it will be necessary to purchase your tickets as far in advance as possible, but not later than twelve hours prior to your intended departure time.

All Buses Leave From the  
**GREYHOUND POST HOUSE**

LEAVE STATE COLLEGE, PA.

EASTBOUND	WESTBOUND	NORTHBOUND
* 8:00 A.M.	1:30 A.M.	*** 1:19 A.M.
* 1:25 P.M.	7:00 A.M.	*** 6:44 A.M.
** 6:15 P.M.	1:30 P.M.	*** 1:04 P.M.
1:15 A.M.	6:45 P.M.	*** 6:34 P.M.

\* Through coaches to Harrisburg, Lancaster and Philadelphia, Pa.  
\*\* Connections at Harrisburg for Allentown, Bethlehem, Easton and New York City, N. Y.  
\*\*\* Through coaches to Sunbury, Wilkes-Barre and Scranton, Pa.

The above schedules to become effective October 1, 1945

## Apparitions Appear

# Wives Wrangle Riot Reigns

in

# BLITHE SPIRIT

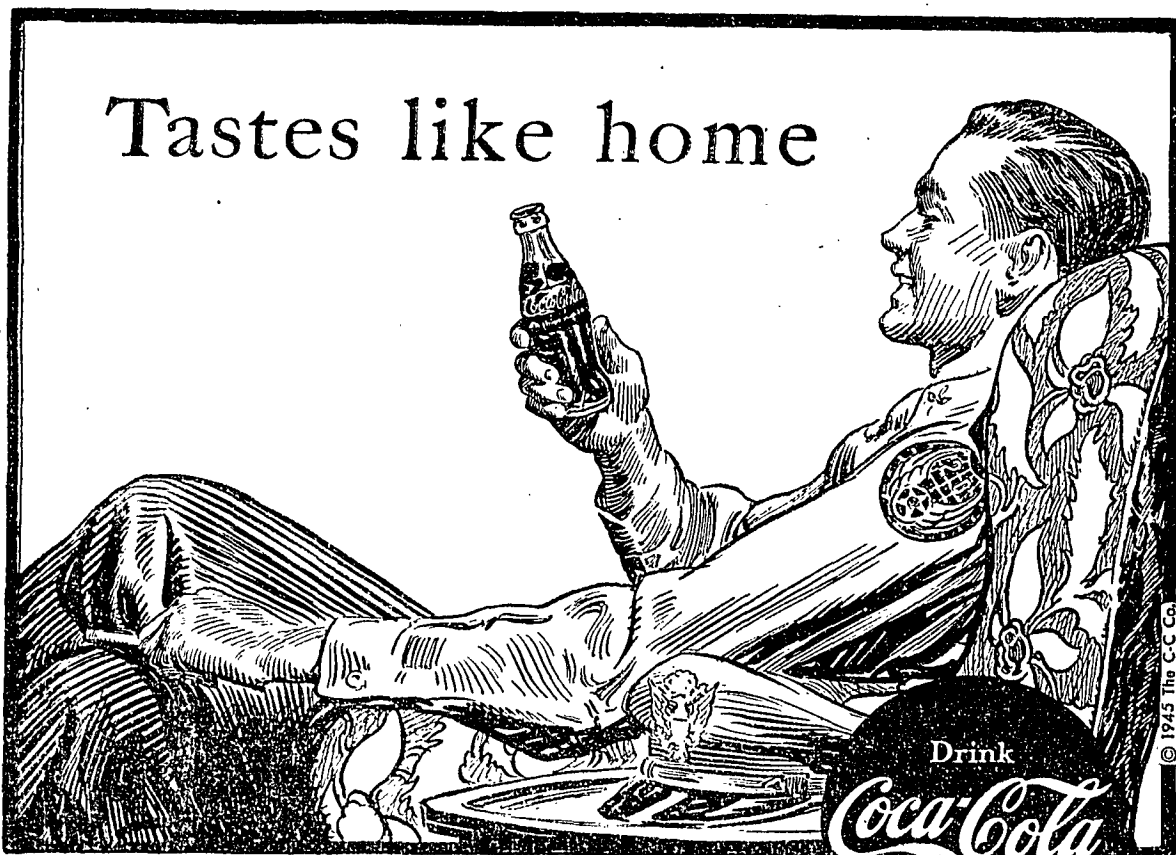
A Players' Show That's Got Everything

Oct. 5 & 6

Schwab Aud.

7:30 p. m.

60c incl. tax



BOTTLED UNDER AUTHORITY OF THE COCA-COLA COMPANY BY

ALTOONA BOTTLING WORKS OF ALTOONA

## FRATERNITY JEWELRY

L. G. BALFOUR COMPANY

LOCATED IN THE ATHLETIC STORE