

## Student Leaders Canvass Campus In Annual Drive

Richard Mauthe, Robert Barefoot, and Jeanne Hirt, co-chairmen of the PSCA financial drive, released the following list of student leaders. The solicitors' list in some cases is not complete.

### SECTION LEADER

**Betty Funkhouser**

**Division Leaders:** Mary Haines, Sara Pollard, Ann Reese, Betty Steele.

**Solicitors:** Louise Danckel, Ann Emory, Mary Faloon, Dorothy Hoke, Alice King, Helen Miller, Jean Nienstedt, Ethel Pittman, Florence Porter, Terry Rosenthal, Ruth Stuck.

### SECTION LEADER

**Patricia Enright**

**Division Leaders:** Ann Berkheimer, Lynn Clark, Dorothy Colyer.

**Solicitors:** Annabelle Cramer, Miriam Evans, Lynette Lundquist, Carolyn Wilhelm.

### SECTION LEADER

**Shelley Smith**

**Division Leaders:** Lucille Aaronson, Phoebe Forrest, Thelma Rosenthal, Mary Jane Rudy.

**Solicitors:** Joan Charles, Eleanor Cohen, Jane Dieterle, Jane Gray, Jo Ann Kuehn, Madelyn McCall, Alice Mendenhall, Ruth Ann Metzger, Jonelle M. Phillips, Carol Preuss, Barbara Reiss, Jeanne Rile, Ann Willis.

### SECTION LEADER

**Mary Margaret Dunlap**

**Division Leaders:** Phyllis James, Harriet Mayes, Mary McMillan, Grace McMillen, Gloria Simpson.

**Solicitors:** Mildred Gross, Ruth Hanstein, Miriam Johnson, Geraldine Marley, Katherine Morris, Virginia Roe, Gertrude Rotheram, Gloria Simpson, Janet Shaffer.

### SECTION LEADER

**Robert Barefoot**

**Division Leaders:** Paul Droder, Warren DuBois, George Jones.

**Solicitors:** Neil DeVries, Robert Hoffman, Jacques Hogg, Salvatore Rocci, John Rose, Larry Saunders.

### SECTION LEADER

**Richard Mauthe**

**Division Leaders:** George Paul Jones, Ivan Kline, Jim Warner.

**Solicitors:** Frederick Andrews, Robert Bacon, Jack Bennett, Charles Boller, Morris Bortek, Donald Brutout, Donald Brown, Robert Casselberry, Stanley Cacccone, Buzz Cloud, Joel Crouch, Victor Danilov, Joseph Diehl, John Dinger, Rodney Engstrom, Fred France, William Hill, Charles Hurd, George Keller, Jack Kemper, William Lamberton, Carl Lawrence, Earl Magee, William Morton, William Nagorny, Warren Neiger, Felix Roth, George Sample, Alfred Smallley, Robert L. Weaver, James Worley, Robert Glen Yeagley.

## Upperclassmen Organize Social, Service Group

To provide a social and service group for students no longer eligible for freshman groups, PSCA organized the Upperclass Club early this semester.

The club's meetings are scheduled for every other week, but as yet most of the plans are tentative, according to Sara Achenbach, president. The next meeting is set for the Hugh Beaver room, Old Main, 7:30 p.m. Friday. At this time the president will appoint service, program, and other committees.

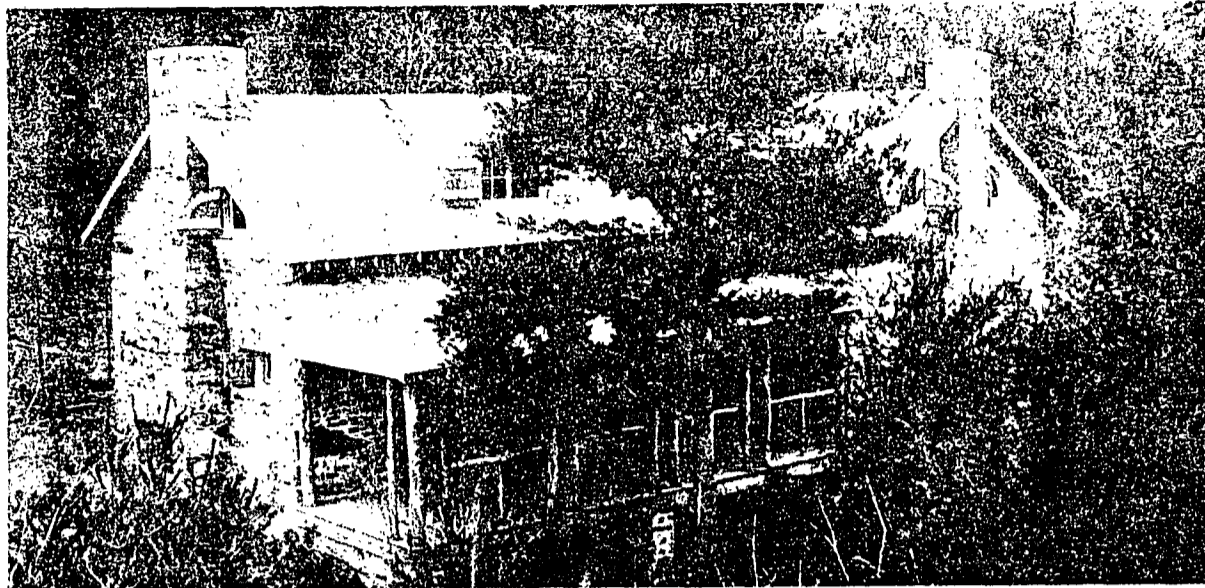
Other officers of the club include Lois Smith, vice-president; Nancy Schmitt, secretary; and Carolyn Currier, treasurer.

## Open House—

(Continued from page seven)

In co-operation with the film library under Philip Manino the CA is planning Sunday afternoon movies consisting of late features to be shown in 121 Sparks from 2 to 5:30.

## Ralph Watts Lodge



The PSCA cabin is located in Shingletown Gap about four miles from State College. The lodge is located on the side of Mt. Tussey overlooking Nittany Valley. It has facilities for feeding 65 and lodging 40 persons. Weekend hikers and bikers make constant use of the cabin throughout the year. The cabin maintenance committee of the PSCA cabinet is in charge of it. Cabin parties and hikes to the lodge, afford complete relaxation for those participating. Talks by student leaders and prominent men on campus highlight the weekends. James T. Smith and Betty Farrow chaperon the groups.

## College, Students Give Most To PSCA Income

Urging students to support the PSCA canvass, Richard Mauthe, treasurer of the association and co-chairman of the drive, said, "In past years the main sources of income were the College, the students, faculty, alumni, friends, parents, and enlisted students in that order."

"Money is spent for salaries, student budgets, offices and general expenses. It is interesting to note that the College's contribution almost covers salaries while almost every cent the students contribute is placed under 'student budget.'"

The estimated income of the PSCA for the three semesters follows:

Penn State College	\$ 4,000
Student Campaign	2,200
Faculty Campaign	1,300
Students (enlisted)	300
Parents	400
Alumni and Friends	1,500
Endowment Fund Income	25
Lodge Fees	50
Bookstore	25
Misc. Income	10
From Previous Balance	1,035
	<b>\$10,850</b>

PSCA keeps students informed of its doings through publications. The Nittany Lines, and CA News. The CA also publishes the Freshman Handbook.

## Betty Says—

Miss Betty Farrow, associate secretary of the PSCA, has assumed full leadership of the association while James T. Smith, executive secretary, is in the Phillipsburg hospital. As part of her contribution to the current financial drive, she has written the following poem:

Maybe you can't fight in Guadalcanal,  
Or be a nurse at the front-line door;  
But surely you can back the attack  
For the Ideals they are fighting for—  
The Intangible things like common sense  
Good neighbors—the right to vote  
Make the difference between our way of life  
And the Totalitarian note.  
The CA is working on our way of life;  
It takes time, skill and plans,  
Open House—town meetin's right here at State,  
On "The Rights of Our Fellow Man."  
Well, the CA has served for 70 years  
And maybe we can't all work in—  
But it's basic, it's our way of life,  
And it costs,  
So you had better chip in!

All students and servicemen are cordially invited to use the lounge facilities in the Hugh Beaver room, 304 Old Main.

## PSCA Budget Includes Student Project Funds

Believing that the program of the PSCA must include all items of expense which contribute directly to the successful planning and accomplishment of student-faculty activities, whether they include mechanical needs or professional leadership, the association has prepared the following budget of expenditures. The books are kept by R. W. Acheson and audited yearly by C. W. Rowland, certified public accountant.

The estimated program expense follows:

Salaries, Professional	
Leadership	\$ 5,700.00
Office Secretary	1,200.00
Contingent	150.00
Contributions and Assessments	10.00
Finance Solicitation	500.00
General Expense	300.00
Office Expense	250.00
Postage	150.00
Secretarial Travel and Conference	200.00
Bad Debts	25.00
Depreciation on Equipment	250.00
Debt Retirement on Cabin	200.00
Interest on Notes	130.00
Budget for the Program and PSCA	1,785.00
Student Projects	\$10,850.00

This semester PSCA Inter-Faith Group, in cooperation with Hillel Foundation sponsored a lecture by Rammi Stephen S. Wise on the topic "If I Were a Christian."

## Appeal For Student Support

James T. Smith, PSCA executive secretary, and Betty Farrow, associate secretary, have issued a joint appeal for all students to consider seriously the contribution of PSCA to campus life and to give this organization their support.

Mr. Smith said, "If service for Penn State is an acceptable motto for the seventy years the Christian Association has functioned on the Nittany Lion campus, PSCA merits the support of every student and member of the faculty, for it has pioneered in areas of building character through leadership and activity, fostering wholesome programs of a social religious nature that the campus has needed, and continually reminding the campus that right attitudes and a religious faith are parts of a complete education. Servicemen and ex-servicemen are included in the PSCA program."

"I recommend to you the Christian Association as one of your channels for service to Penn State and your country."



**JAMES T. SMITH**  
General Secretary



**BETTY FARROW**  
Associate Secretary

## Student Cabinet Plans Programs, Guides Activities

CA Cabinet, student governing group for this organization, plans all CA activities with the aid of a board of directors. Cabinet members are elected by all CAer's once each semester while the board of directors is appointed but once a year.

Programs, publicity, and projects are supervised by Cabinet members who are divided into six commissions and four committees in addition to the executive officers elected within the Cabinet itself. **Executive Committee**

Guiding the Cabinet's program this semester are the executive committee: Betty Ann Condron, president; Mary M. Dunlap, vice president; Patricia Enright, recording secretary; Lois McCool, corresponding secretary; and Richard Mauthe, treasurer.

Intercollegiate and World Fellowship is the name given to Betty Funkhouser's Commission I, which attempts to link the religious groups on campus with similar groups through the nation and world. Members of this commission collect for the World Student Service Fund, sponsor a semesterly International Tea, and attend regional religious conferences.

The New Student Program, Commission II, helps to orient all freshmen. Members of this body organize Freshman Forum and Freshman Council, provide student counselors for new men, and supply CA "Chums" for transfer women. Robert Barefoot and Shelley Smith are serving as co-chairmen for this commission.

The Religious Emphasis group, better known as Commission III, is headed by Ann Berkheimer and Barbara Rinkmeyer. Morning watch services, deputations to the churches, Interfaith Council, cabin retreats with chapel speakers, and the Outdoor Chapel in Hort Woods are all sponsored by this body of students.

### Community Service

Dorothy Colyer and Robert Worthington lead the Community Service section of the Cabinet, Commission IV, in supervising recreation and other group activities for the school children in neighboring areas. This commission also sponsors the Weekly Atherton News Reviews.

Campus V, Campus and Wartime Service, sponsors all-College hikes, servicemen's lounge and movies, Old Main Open House, and the annual Christmas Carol Sing. Il-jean Feldmiller, Paul Pioth, and Barbara Struck direct this commission's activities. Public Affairs Commission VI was just recently organized under Claire Weaver and Barbara Struck.

To maintain the students' interest in CA is the chief purpose of the publicity committee. CA News, Freshman "Bible," Nittany Lines, and original posters are all distributed by this committee. Mary Clouser and Mary McMillan are this semester's publicity committee co-chairmen.

### Student Placement

The Personnel Committee, under the direction of Doris Buckman and Barbara Stocher, tries to encourage active participation in CA activities and projects. In addition to maintaining the membership files and helping with the general office work, members of this committee study CAer's and recommend persons suitable for leadership in the various commissions.

Forums, discussions, and public speakers sponsored by CA, are all arranged for by Harvey Marcy, Florence Porter, and their Public Meeting Committee. Robert Dunlap and his Cabin Committee not only plan cabin parties and hikes, but also keep the CA cabin in order and repair.