

Women In Sports

The Army field hockey squad took the lead in the intramural playoff series when they trounced the Navy eleven, 3-2, Tuesday.

Barbara Painter, Barbara Smith, and Penny Stevenson scored for Army while Jane Walbarst and Pété Snyder tallied for the Navy team.

Army-Navy players were selected by the WRA Intramural Board for outstanding ability shown during interclass games.

A 2-2 tie resulted in the Monday tussle with Barbara Smith, Ann Wills, Alice Hooper, and Mary Gundel scoring.

The line-ups follow:

Army: Becky Walker, captain, Barbara Painter, Ann Wills, Barbara Smith, Penny Stevenson, Lou Schlichter, Betsy Ross, Jinx Jenkins, Eunie Hurlburt, Mary Ann Jennings, Irish Craig, Lois McClelland, Fay Matulis, Janet Newell, and Elinor Wills.

Navy: Alice Hooper, captain, J. Alderfer, Betsy McGee, Mary Gundel, Jane Walbarst, Pete Snyder, M. M. Dunlap, Mary Lawther, Sally Eiters, Mary Humphries, Ann Baker, Jo Broberg, Bobbie Briggs, Anita Geiger, and Dot Cohen.

Intramural Cage Tilt

Intramural basketball practice will begin November 27. They will be held in the gymnasium of White Hall, 7:15 p.m. every night that week, Becky Walker, chairman, has announced.

Intramural games will begin December 5 and continue through January. Interclass and Army-Navy games will follow.

Overnight Hike

An All-College coed cabin party sponsored by Outing Club has been scheduled for November 24 and 25. Coeds will leave White Hall Saturday afternoon, hike to the WRA cabin on Tussey Mountain, and return to State College Sunday. Anyone interested should sign up on the locker room bulletin board.

Odds 'n' Ends

Bridge Club will be reorganized in the play room of White Hall, 7:30 p.m. Thursday. Miss Eleanor Wray, graduate assistant, will supervise the group and will instruct beginners.

Officers elected at the business meeting of Bowling Club Tuesday night are Mary Gundel, president; Harriet Haas, vice-president; Meg Marcy, secretary; and Marty Humphries, publicity chairman.

Lucey Clayton, graduate assistant, will instruct bowlers at 7:15 p.m. every Tuesday and Thursday in preparation for the Intercollegiate Telegraphic Tournaments to be held in December.

WSGA, Panhel Council Name Officers

Panhel Elects Weaver, Approves Rushing Code

Officers of Panhellenic Council for the next three semesters were elected at their re-organization meeting Tuesday, and a revised rushing code was presented and passed by both Pan-Hel and WSGA.

Jeanne Weaver, Kappa Alpha Theta, will head Pan-Hel, with Priscilla Wagner, Alpha Chi Omega, as vice president, Jane Dye, Kappa Kappa Gamma, as secretary, and Ann Keller, Zeta Tau Alpha as treasurer.

The revised rushing code stipulates that sororities may have no association with first or second semester freshmen, first semester sophomores, or new transfers until formal rushing in January. There may be association with all other upper classwomen.

Panhellenic tea will be held in Atherton Lounge from 2:30 p.m. to 4:30 p.m. on Saturday, November 25, for all freshmen women and new transfers.

Newly elected officers will be installed by Helen Martin, Pan-Hel president Tuesday.

Panhellenic Council released the following calendar for rushing:

Sat. No. 25Panhellenic tea
Sat. Dec. 2Open house
Sat. Dec. 16Open house
Mon.-Sat. Jan. 8-13—Open rushing 8 a.m. to 5:30 p.m.

Sun. Jan. 14 Silent period
Mon.-Thurs. Jan. 15-18—Open rushing. Each house may have two rushing parties, 7 p.m. to 9 p.m.

Sat. Jan. 20—Coffee hours from 1:30 p.m. to 3 p.m. and 3:45 p.m. to 5:15 p.m.

Sun. Jan. 21—Silent period until 7 p.m., when lists may be procured from the Dean of Women's office.

No informal rushing will be permitted before formal rushing, which will open January 8.

Coeds to Address Cards

All coeds are invited to attend the letter-writing hour in White Hall from 7 to 9 p. m. Tuesday. Sponsored by Philotes, the group will address Christmas cards to all former College men who are now in the service.

In addition to addressing greeting cards, coeds who wish to may write letters to servicemen on the Philotes correspondence list.

Sorority Shorts

Alpha Chi Omega

Alpha Chi Omega and Kappa Alpha Theta will be the guests Monday night of Gamma Phi Beta when Dr. Conrad B. Link, associate professor of Horticulture, will speak. Dr. Link will show slides on flower arrangement.

Theresa Kracky and Lois Lewis will be initiated Sunday night.

Jane Gleichert is visiting Alpha Chi Omega this week. Shirley Ritzel will be a weekend guest.

Alpha Xi Delta

Alpha Xi Delta will entertain Mrs. Winifred Corwin Robinson, national president, this weekend. Rosemary Keyser will be initiated Sunday.

Delta Gamma

Delta Gamma will hold an Open House for the V-12 immediately following the game tomorrow. Refreshments will be served.

Kappa Alpha Theta

Monday's regular Theta meeting featured another in the series of educational talks. The guest speaker was Edward K. Hibshman, alumni secretary, who gave a history of the College's past customs and old buildings.

Kappa Delta

Mrs. Daniel Eison Sowler, national inspector of Kappa Delta, will visit the chapter at the College this weekend.

In honor of her stay the Kappa Deltas will attend the football game together tomorrow. A dinner will be given in the State College Hotel and an Alum Tea will be held at the home of Mrs. Helen Loman, provence president.

Sigma Delta Tau

Sigma Delta Tau held elections this week, naming Harriet Miller president of the group for the coming year. Arline Crystal was elected vice-president; Betty Berman, corresponding secretary; Dorothy Robinson, recording secretary; and Raisa Poser, treasurer.

Elsie Bohard, Joan Lane, and Marion Papernick were initiated into the sorority last night and a dinner was held at the Nittany Lion Inn following the initiation ceremony.

Sigma Delta Tau will be entertained by the Beta Sigma Rho fraternity Sunday afternoon.

Women's Dormitories Announce New Officers

Final results of house elections held in all campus dormitories last Monday night were announced at WSGA meeting Wednesday evening.

The women of the southeast unit of Atherton Hall elected Ann Emory president; southwest unit, Helen McCalgin; northeast unit, Nancy Norton; northwest unit, Shirley Connor.

Grange dormitory president is Helen Beth Orange; McAllister Hall, Jane Healy; Watts Hall, Barbara Smedley; Irvin Hall, Barbara Morrison; and Jordan Hall, Jane Davis.

WSGA President Gertrude G. Rosen read a letter to Senate from the Mifflin County Welfare Home, asking the support of the women student body again this

Surgical Dressings Class Folds 11,036 Bandages

At the first surgical dressings class of the semester, 100 coeds made 11,036 gauze bandages. Alpha Epsilon Phi topped all other sororities with 23 present.

Three rooms on the first floor of the Home Economics building are now available from 7 to 8:30 p.m. for the work. Red Cross supervisors urge coeds to help with the project, as it is requested and sponsored by the WSGA, Penn State women's organization.

GSO to Hold Open House

GSO will hold an Open House at Woodman's Hall from 2 to 6 p.m. Sunday, according to Nancy Norton, president. All Servicemen and civilian men are invited.

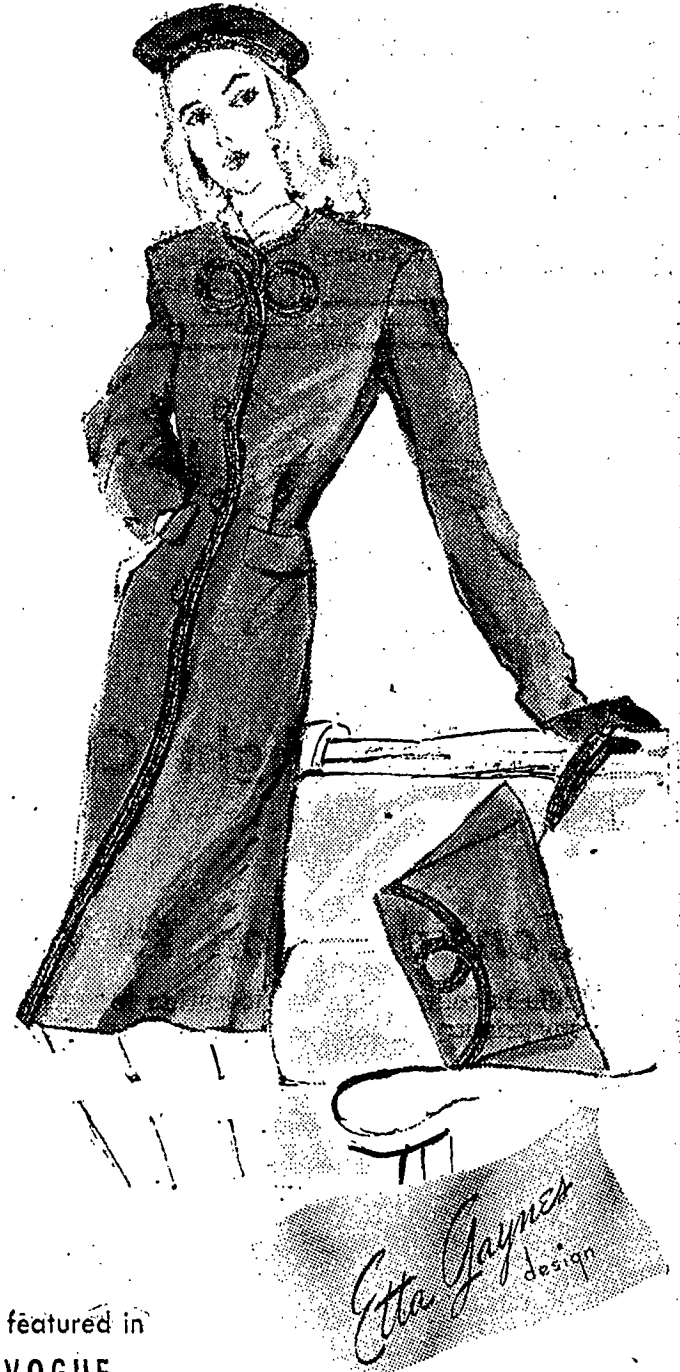
year for their annual Christmas Drive. WSGA voted its unanimous support to a drive for contributions next month.

We're in Good Company! "Etta Gaynes" is another fine brand of fashion clothes sold at

CHARLES SHOP

Other stores selling "Etta Gaynes" are—

- Horne's in Pittsburgh
- Marshall Field in Chicago
- Blum Store in Philadelphia
- B. Althan in New York



as featured in VOGUE

For spirited young figures! Brush-strokes in braid point up the slim lines of this fitted coat by ETTA GAYNES. Lovingly tailored in "DUVBLOOM," a 100% wool fabric by AMERICAN WOOLEN CO. Quality rayon lined with EARL-GLO. In black or gray. Sizes 9 to 17—10 to 16.

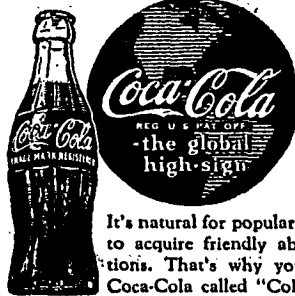
Charles Shop

Have a Coca-Cola = So glad you're back



...or offering a soldier the comforts of home HOME! No place like it. And nobody knows it better than a fighting man back on furlough. Ice-cold Coca-Cola is one of the comforts of home that belongs in your family refrigerator. At the words *Have a "Coke"*, refreshment joins the party. The good old American custom of the pause that refreshes is spreading in many lands around the globe,—a symbol of our friendly home-ways.

BOTTLED UNDER AUTHORITY OF THE COCA-COLA COMPANY BY COCA-COLA BOTTLING COMPANY of ALTOONA



It's natural for popular names to acquire friendly abbreviations. That's why you hear Coca-Cola called "Coke".

© 1944 The C-C Co.