

Sherwood
To Play For
Winter Ball

The Collegian

Princess
Will Visit
College

VOL. 41—No. 8

FRIDAY MORNING, JANUARY 7, 1944—STATE COLLEGE, PA.

PRICE FIVE CENTS

PSCA Begins Annual Finance Canvass Ball Features Sherwood

With 'Tip-Off' Rally At S. C. Hotel

Dr. Bernard C. Clausen Speaks To Faculty Group

CA Drive Chairman

Aiming for a successful campaign, the Penn State Christian Association will begin its annual finance canvass with a "Tip-Off" rally at the State College Hotel banquet hall, 3:30 o'clock tomorrow. The drive will be outlined by CA officials during the meeting.

Mr. James T. Smith, general secretary of PSCA announced that the money received, as a result of the drive will finance all PSCA student activities for the coming year. It is through the annual canvass that functional, social and recreational events on the campus are made possible.

Faculty chairman for the faculty portion of the canvass is Dr. Henry S. Brunner, professor of agricultural education at the college, who with the assistance of ten division leaders and fifty solicitors, will attempt to raise \$1000 as the faculty goal. The student drive will begin January 22.

Guest speaker for the afternoon will be Dr. Bernard C. Clausen of the First Baptist Church, Pittsburgh. In the last war Dr. Clausen was a chaplain aboard the U. S. S. North Carolina from 1917 to 1919. As an author, preacher and theologian, he has been considered by many as one of the most popular of chapel speakers at the college. Dr. Clausen will also speak at chapel Sunday.

Other invited guests will be: President Ralph D. Hetzel; Adrian O. Morse, assistant to the president; Dean Arthur R. Warnock; Dean Charlotte E. Ray; the board of directors of the PSCA; the deans of the schools of the College; Samuel K. Hostetter, in charge of business and finance and assistant to the president; Russell E. Clark, bursar; Ray V. Watkins, scheduling officer; Neil M. Fleming, graduate manager of athletics; Louis Bell, director of (Continued On Page Three)



DR. HENRY S. BRUNNER

Penn State Engineer To Award Scholarship

The Penn State Engineer has announced the foundation of a \$500 dollar scholarship to be awarded every other semester to a student enrolled in the School of Engineering, the School of Mineral Industries, or the Chemical Engineering curriculum.

The scholarship will be awarded on the basis of financial need, scholarship, personality, and extra-curricular activities by the senior staff of the Engineer and its faculty advisory committee and is approved and administered by the Senate Committee on Academic Standards.

In order to be considered the candidate must have at least a 2 average. Students who are interested should leave a letter addressed to the Penn State Engineer stating their qualifications and other pertinent facts at Student Union on or before Friday, January 14.

Thespians To Entertain At V-12 Dance

With music provided by the rejuvenated Navy-Marine Orchestra and entertainment by a Thespian troupe of Leon Rabinowitz, Jane Abramson and Adele Yablon, V-12 trainees will hold their second Formal tomorrow night at Rec Hall.

The dance, honoring the arrival of Comdr. Walter S. Gabel, as Commanding Officer of the Unit will begin at 8:30 p.m.

The entertainment will replace the election of a Navy-Marine Queen which was the feature of the first Formal. Laughman Leon Rabinowitz, who once appeared on Fred Allen's "Town Hall of the Air," will provide the comedy while Adele Yablon will present several of her inimitable comic-lyric selections as a climax to the intermission fun.

New innovation will be the placing of Barracks Booths to simulate the effect obtained by the collegiate fraternity booths.

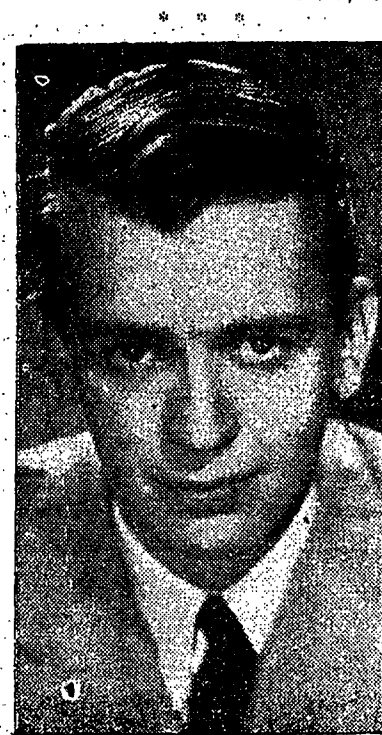
Each barracks will have its individual booths under a lettered sign signifying the Navy or Marines and noting the number of the house. Red, white and blue crepe will provide the usual patriotic theme to the dance, according to Rus Parker, chairman of the committee.

With their first appearance of the year at a USO dance before the Christmas recess a thing of the past, the Navy-Marine band under the baton of Pvt. Wayne Chaf- (Continued on page seven)

Bobby Sherwood and his orchestra with "something new in syn- copation" will swing into State College February 5 to play for the formal Winter Ball, sponsored by All-College Cabinet.

Les Stine and Steve Herbert, co-chairmen of the dance, promise that Rec Hall will be more elaborately decorated than for previous wartime proms. Student tickets will sell for \$3.75, including tax; servicemen's for \$2.75.

The Sherwood orchestra, coming from Miami Beach, features



BOBBY SHERWOOD

Bobby on the guitar, trumpet and lyrics and a singing newcomer, Gwen Davies, handles the female end of the vocals.

Although having come up in the midst of a record ban, Bobby Sherwood, was voted 9th high in a popularity poll by Martin Block, conductor of "Make Believe Ballroom" over WNEW, New York. Sherwood has made only two recordings to date, "Elks Parade," and "Harlem Butterfly."

Before forming his orchestra, Bobby was under contract as a guitarist to MGM studios for five years. He was a special accompanist to Bing Crosby in pictures and recordings, and has accompanied many stars such as Lily Pons, Nelson Eddy, Grace Moore, and Judy Garland.

This young, blond six-foot maestro is the son of vaudeville stars and made his first stage appearance when he was 8 years old. Born in Indianapolis in 1914, Bobby learned to play the banjo when he was six. The Sherwood troupe was on the road most of Bobby's young childhood, so that his early education was through private tutors.

The Sherwoods finally settled down in California and Bobby was sent to Palo Alto Military Academy and later to Pasadena High, where his classmates included Ellsworth Vines, Jean Parker, Donald Novis and Leighton Noble. But after two years at Pasadena Junior College, Bobby gave up his academic education and gave over all his time to music.

Sherwood's voice, guitar and trumpet have been heard on the (Continued on page six)

ISC Sponsors 'Slush Ball'

Owls Jive Out

"Slush Ball," an informal dance, will be presented January 15 in Rec Hall by ISC. Bud Wills and the Campus Owls will furnish reason for rhythm from 9-12 p.m. with a band rapidly coming into its own.

Johnny Setar, clarinet ace, will solo on "China Boy" and "Pagan Love Song." Betty Platt will vocalize, with "Where or When," and "Rockin' Chair" as feature songs. Pat Lamade, Bud Muss, and Joe Cannon will work on the piano, trombone and tenor saxophone respectively, with Earl Roberts, Blue Band man, Johnny Sloan, and Paul Grove giving out with solid trumpets.

The advisory committee, which consists of George Leetch, Helen Schimide, William Folk, Sydney Rivenburg and Kay Kirk, promise a novel intermission.

Tickets for the dance, which range in the exact vicinity of 77 cents for servicemen and \$1.10 for civilians, may be purchased at the door or from Jack Murray, Walt Ponski, June White, and Peter Keffalas.

In charge of refreshments will be Robert Hirzel and George Williams. Nancy Coffin and Emma Jean Snyder will chaperone, with invitations under the supervision of Barbara Wedge, Bernard Sirczeski will direct the checking. Lights and decorations will be handled by James Redmond, Arthur Goldberg and Rosemary Keyser.

Frosh To Pull Ropes For Hanging Customs

All the brawn and energy that has been salvaged for duration will be on exhibit tomorrow afternoon on the practice field at 2 o'clock when the 2nd semester freshmen meet the 1st semester freshmen in a rope pulling contest to determine whether the lower frosh will be able to doff customs.

Acker, Flying Cadet, Portfolio's Feature

Portfolio will once more hit the stands on Monday, featuring, according to Editor Rosalind Schnitzer, a portrait called, "Bill Acker, Flying Cadet," written by Ruth Constad. Acker, now training with the Air Corps here has seen active duty, having ferried a plane across Africa.

This issue of the publication also contains a feature review of Max Schulman's "Barefoot Boy with Cheek," newest tongue-in-the-cheek novel on college life, written by Lee Learner.

Jacqueline Socol, a sophomore at the College, who came to the United States from England in 1939, has written a commentary on the English school system, entitled, "So You're Going to America!"

In addition to its customary poetry and stories, Portfolio will present a bird's-eye view of the Penn State campus at war in '44.

As usual, Portfolio will be on sale at the Corner and local news agencies.

Company — Halt!

All servicemen attention! Have you watched Ernie Pyle with professional envy? Would you like to be one of the reporters of an enterprising newspaper and be able to clip out your own stories and send them home marked "this is mine?" Collegian urges all servicemen aspiring toward a journalistic career to contact the Collegian office between 7 and 8 p.m. Tuesday and Wednesday nights.

See editorial—page 4.

Psychological Drama Comes To Players Stage Next Week

"The Father," a psychological play by August Strindberg, will be presented by the Penn State Players in Schwab Auditorium at 8 p.m. January 14th and 15th according to director Stanley C. Danowski, graduate student in Dramatics.

Playing the title role is Newell C. Cook, graduate of Florida Southern College now in the research division of the Chemistry Department at the College. Alumna, Verna Sevast, a veteran member of Players will portray Laura, his wife, Miss Sevast, who was recently seen in Players "The Moon Is Down" is now connected with the Central Extension.

Harry Peby plays the part of the Pastor, and Joseph Mayers, the doctor, in this drama, a naturalistic study of the struggle for power which goes on between a man and woman for control of their child.

Nojd is depicted by Joseph Doerner, Margaret by Leatrice Strober; Bertha is played by Palma Wakefield and the orderly by Thomas Monaghan.

Technical crew heads for the show include George Rows, stage manager; John Givens, construction manager; and Roslyn Orlofsky and Nancy Norton are costume and advertising manager re-

spectively.

Marion Schein and Mary Davis are Property heads, Mary Ann Mason and Rosalind Green paint manager and Mary Jo McDougall and James Redman lighting directors.

Tickets for "The Father" may be bought at SU any time this week, Danowski added.

Dickinson Debaters First '44 Opponent

Penn State's debate team opens the 1944 season against Dickinson College, Carlisle, Pa. The National debate question for the year is to be the topic for the debate, "Resolved: That the United States should cooperate in establishing and maintaining an international police force upon defeat of the Axis."

The debate will be held in 121 Sparks, 8 p.m., Wednesday. Dating back to 1898, the Penn State-Carlisle series is the oldest in the State. It is also among the oldest in the United States. Since the start of the series, only once have the teams failed to meet.

While Penn State has the affirmative side of the question, Carlisle will defend the negative. The series is held alternately at each college.