

Panhel Council Votes To Accept Chapter Limitation Maximum Membership To Equalize Sororities

After frequent attempts to establish some form of regulation of sorority expansion, Panhellenic Council accepted the system of chapter limitation at its meeting Tuesday.

National Panhellenic advises under this plan a limitation of 50 members for all sororities in a college of this size. This limit was accepted by the council.

Aside from this suggestion, the rules committee of the council was free to adapt the plan to Penn State's needs. Already it has suggested eight semesters as the period during which women's fraternities are free to adjust their membership to the new limit. A complete set of limitation principles will be formulated by the group and put to vote by the council.

The purpose of the system, as put to test in many other colleges, is to reduce the memberships of large groups to numbers which can function most effectively as social units and thus raise the membership of smaller sororities to the point where there are no numerical distinctions. In point of fact, it has proven of most benefit in bringing the middle group of sororities to a level with the large ones.

In achieving this limit of 50, a sorority must plan its pledge classes so that the total will not be swelled beyond bounds when the pledges are counted. It has therefore been suggested that the pledge class equal the graduating senior class.

Rushing under the system will be unchanged. New members will probably be rushed every other semester, under the same rules as formerly were observed.

ISC Buys War Bonds

Part of the receipts from the "Nittany Nocturne" dance have been used to buy a \$25 and a \$50 war bond, according to Norma R. Stern, ISC secretary. She also announced that Mr. George Leetch, head of personnel and placement office, has been appointed ISC adviser.

ISC Council will meet in the Penn State clubroom, 3rd floor Old Main, 7:30 Wednesday.

Gamma Phi Beta Initiates

Gamma Phi Beta recently initiated Nancy Geisse, Consuela Goehring, Jeanette Jones and Vera Owens, and pledged Betty Meyers.

Champ Takes Time Off Playing To Teach Golf For Duration

Bringing her six-year record of participation in amateur golf tournaments to a temporary close for the duration, Miss Janet Fleming, physical education graduate of the class of '42, has assumed instruction of golf club and classes, at the same time working for her master's degree.

Known as "Johnnie," Miss Fleming entered her first tournament at the age of 16, playing nine holes in an inter-club match between the Centre Hills women and Williamsport. From this she went on to play in the Pittsburgh district events and the State championship tourney for four years, as well as several winter circuits in Florida. In the latter she progressed to the quarter-finals. Last

year she emerged runner-up in the western state championship, and completed the district tournament with the championship.

Miss Fleming glances back over years of golfing to her first tournament and laughingly recalls her initial victory when she won the junior championship of the Centre Hills Country Club.

She was prompted to abandon tournament activities for the duration because tournaments which formerly lasted for several weeks were reduced to a day. She will play golf now "purely for enjoyment of it."

Miss Fleming began instructing golf classes Monday and will assume the club advisership at the next meeting. Ruth Embury is club president.

Announces Hours



Senate Releases Coed Hours For This Weekend

7 Fraternities Have Dating Privileges

WSGA Senate has granted all coeds two o'clock permissions for tonight and the usual one o'clock for tomorrow evening, according to President Ruth M. Storer. Upperclass permission for this weekend applies to the freshman coeds also, Miss Storer stated, although they will be allowed to date only until nine o'clock Sunday.

Dean of Women Charlotte E. Ray attended the Senate meeting and announced the names of the following fraternities which will be allowed to entertain dates: Beaver House, Beta Sigma Rho, Delta Chi, Phi Delta Theta, Phi Kappa Sigma, Sigma Phi Alpha, and Theta Chi. Coeds must be out of these houses by midnight, Miss Ray said.

Jean Ogden, Junior Service Board representative on Senate, submitted a list of ten coeds that Junior Service Board will consider tapping. Discussion will be held next week, at which time four of the coeds will be eliminated.

A "Saturday Night" committee was appointed to investigate the possibility of some sort of Saturday night entertainment for both civilians and servicemen. This entertainment may be a Dry Dock at the Sandwich Shop or an Armory dance which will be held every Saturday when the local USO chapter does not sponsor a dance for servicemen only.

WSGA Senate will meet in the Senate room, White Hall, at 7:30 p.m. Wednesday.

Metal Society Meets

The Pens State Chapter of the American Society for Metals will hold its regular meeting in the MI Art Gallery at 8 p.m. Thursday.

Mr. Faragher of the Aluminum Company of America will speak on "Aluminum—Its Alloys and Uses." Hamilton Propeller students have been invited to the meeting and all visitors are welcome.

Theta Phi Alpha Elects

Theta Phi Alpha recently installed Rita M. Belfonti as president; Mary L. Battle, vice-president; Eileen M. Stroup, secretary; and Pearl M. Trapani, treasurer.

Dancing Injun Braves Led By Squaws Invade White Hall Wigwam

Cwens will be ready to retire to the "Happy Hunting Ground" by the time the big "Injun Stomp" blows over September 11, according to Pat Halburg, chairman of the dance. Betty Shenk and her committee have been outdoing themselves making posters asking coeds "Can-oe find a date for Injun Stomp?" and "Injun Stomp is pipin' hot."

Returns from the dance will be used to give a scholarship to a coed, Ann Louise Decker, president, announced. Tickets may be obtained from any Cwen or at Student Union.

"Injun Stomp" will feature Jimmy Burden and his orchestra. White Hall will be converted into a major wigwam for the affair.

Coeds must hunt out their favorite Hiawathas. Service women will be admitted to reduced rates, according to Miss Halberg.

Ag School Offers Course To 'Backyard Growers'

A short course in poultry husbandry, of value to beginners and backyard growers as well as commercial poultrymen, will be given at the College from October 4 to 28. The closing three days will be devoted to the annual poultry conference at which speakers of state and national prominence will discuss feeding and management problems.

This course and conference are expected to be unusually helpful this year because of certain feed shortages which have made it difficult to prepare satisfactory poultry rations.

In addition to nutrition problems, the usual attention will be given to hatching, brooding, housing, care and marketing of eggs and meat birds, and the control of poultry pests.

WOMEN IN SPORTS

WRA has scheduled an All-College Co-Rec skating party for the Coliseum from 2 to 5 p.m. next Saturday, according to President Elizabeth McKinley.

Mary Ann Jennings, club activities chairman, and Julia Gilbert, WRA vice-president, are in charge of the event. Tickets will sell for 25 cents per person. They may be obtained from Miss Gilbert, Barbara Smith, Miss Jennings, Alice Hooper, Mary Grace Longenecker, Elizabeth Pike, or Miss McKinley.

WRA Playnight will be in full swing in White Hall tomorrow night. The building facilities will be open to all coeds beginning at 7:30 p.m.

Committee in charge consists of Miss Gilbert, representing WRA board; Mary Alice Carswell, club presidents board member; and Miss Carmian Forbush, physical education staff member.

Bridge Winner Louise Long emerged as high

scorer in the bridge tournament Tuesday, tallying 2,290 points. Hanna Beckhard followed, scoring 1,580.

Tennis High Spots

Taking the WRA sports spotlight, the final results in the preliminary tennis round include Ath East's victory over SDT. Pat Aloe of the winning team defeated Arlene Crystal, 6-3, and Mottie Haverstick overcame Shirley Levin, 6-1, 6-1.

Winning by default, AZDelt eliminated Ath West from the tourney, while in a previous encounter between the teams the score was tied. Penny Embury, AZDelt, defeated Nancy Hodgson, 6-4, 6-3, and Peggy Childs, Ath West, trounced Nan Smith to the tune of 6-4, 6-2. AZDelt will meet AChIO in the quarter-finals with Jean Miller and Mary Grace Longenecker doing the honors for the latter. Winners will play the representative Grange team, Helen Barr and Betty Pike, who easily won over Betty Bowman and Andy Lewis, Thetas, scoring 6-1, 6-1 and 7-9, 6-4, 6-4, respectively.

Ath East is scheduled to meet AOPi in the quarter-finals. ChiO teammates Marge Schultz and Sally Duffy defeated AEPi's Margaret Stern and Ruth Goodkind, and will play the AOPi-Ath East winner.

Coeds interested in the September All-College tennis tournament may sign up on White Hall bulletin board.

Hockey Continues

Field hockey practices will continue next week, it was announced. Candidates must have three practices and a medical excuse to be eligible.

Freshmen Test Results Available

Results of freshman tests will be available September 1 at the offices of dean of men, dean of women, deans of schools, student advisers, and at the psycho-educational clinic.

These tests are used not only for interpreting guidance in social and family problems, but also in helping the student organize his time for studying.

All problems of maladjusted students having trouble in speech and reading are corrected by the Speech Clinic and Reading Clinic, respectively.

Testing service is also available to the public schools of the state. During the next few weeks, such services have been provided for Centre County and Lewistown.

A specialized division outgrowth of the Psycho-Educational Clinic has been established in the form of a personnel division. The technical and supervisory responsibility falls under the department of education and psychology.

Phi Mu Alpha, music honorary, will next meet in the banquet room of the State College Hotel, 9 p.m. Wednesday, for an informal gathering and refreshments. Pledge lists and current business of the group will be discussed at this time.

A shortage of barrels is reported imminent. Wonder what we'll wear home from the poker game?

CLASSIFIED SECTION

LOST—Gold Gruen wrist watch with black face. Call Marjorie Watson, 203 Ath Hall. 1t-chg—JH

LOST—Sigma Chi pin—H. C. H. 1943. Call Lee Smith, accounting office. Reward. 1t-pd—JH

INJUNS!



at the CWENS' "INJUN STOMP"

September 11 — White Hall — \$1.10

PENN STATE GLASS RINGS

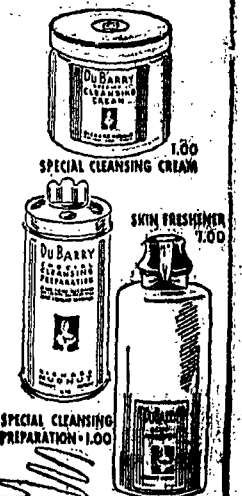
L. G. BALFOUR

LOCATED IN THE ATHLETIC STORE



DuBarry BEAUTY TREATMENT for TEEN-AGE SKIN

YOUNG, "difficult" skins need special care. Stubborn blackheads, coarse and oily skin conditions are easily kept under control this Richard Hudnut way... a simple, 3-step DuBarry Beauty Treatment with the famous Special Cleansing Preparation that cleanses, softens and stimulates.



McLANAHAN'S

S. Allen St.

State College

All Prices Plus Taxes