

WSGA Sets Senior Mass Meeting For Selection Of Five Honor Coeds

Gosser Inaugurates New Senate Members

With graduation only eight weeks away, WSGA Senate announced plans last night for a mass meeting of senior women to nominate and elect five senior coeds. Convening in Atherton Southeast lounge at 7:30 p.m. Monday, the group will select Bow Girl, Fan Girl, Slipper Girl, Class Poet, and Class Donor.

All nominations will be made from the floor, elections will follow immediately, and ballots will be counted during the meeting. Nancy E. Gosser '43, retiring senior senator and chairman of the honor elections, stated.

Since choice should be representative of the entire coed '43 class, Miss Gosser urged senior women to attend the meeting and state their choices.

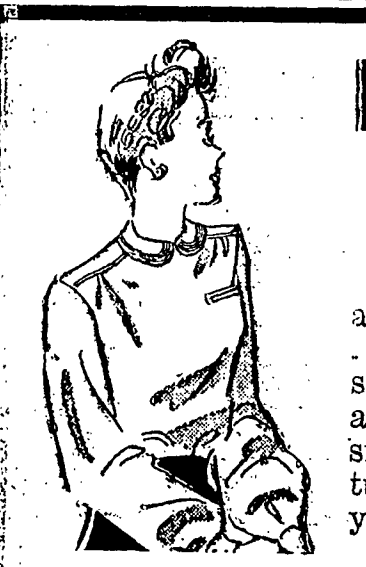
Installation of newly-elected WSGA officers in Atherton North-East lounge preceded the Senate meeting. Coeds inaugurated by Miss Gosser included president, Ruth M. Storer '44; vice-president, Patricia Diener '45; secretary, Dorothy L. Jones '44; treasurer, Patricia Hallberg '46; senior senator, H. Anne Carruthers; junior senators, Jeanne B. Ogden and Kathleen M. Osgood; sophomore senator, Helen L. Martin; independent senator, Dorothy K. Brunner '44; town senator, Elizabeth Furst '45.

Retiring Judicial Chairman Marjorie L. Sykes introduced her successor, Marjion C. Dougherty '44. Freshman senator will be elected today with WRA officers and will assume her post with no formal installation.

Retiring WSGA officers and their successors attended last night's Senate meeting in the WSGA



LET'S PLAN to make it a WEEKEND of BOWLING at the STATE BOWLING CENTER Phone 4082



You'll find it wise to patronize the SMART SHOP S. ALLEN STREET

room, White Hall. Former officials are to contact new ones absent from the meeting and remind them to attend all future meetings, Miss Brunner, retiring acting WSGA president, said.

Miss Brunner appointed a committee to evaluate freshman women's customs and recommend elimination of those deemed useless in view of the present emergency. Members are Miss Gosser, Marjorie L. Sykes '43, Marion C. Dougherty '44, Gloria McKinley '46, and Helen L. Martin '46.

Senate voted Carol M. Kane '45 assistant chairman of the annual WSGA freshman Christmas dinner

Voting Continues In Today's Finals

Completing selection of leaders begun in WRA preliminaries Tuesday, coeds will ballot for sports heads in finals in first floor lounge, Old Main, from 8 a.m. till 8 p.m. today.

Only WRA office already filled is that of sophomore representative, won by Betty Pike in Tuesday's voting. Remaining candidates are president, Adele J. Levin '44, Margaret K. Ramaley '44; vice-president, Elizabeth L. McGee '45, Joan K. Miller '45; treasurer, Mary Grace Longenecker '45, Vivian I. Martin '45.

Ann Drivas, retiring WRA president, urged coeds to come to the polls and put capable leaders into office.

Home Ec Club Elects Campsey President

Margaret L. Campsey '44 was elected to succeed Mignonette Frederick '43 as president of the Home Economics Club last night.

New vice-president is Marie E. Weiss '44. Ruth M. Steiner '45 and M. Jane Head '44 were elected secretary and treasurer, respectively. Class representatives to the Club Council are Juniors Patricia Ann Middleton and Shirley E. Fletcher, senior representatives; Priscilla T. Cobb '45 and Helen M. DeMartini '44; junior class; Garnet Le Van '45 and Betty Jane Drowse '46, sophomore representatives; and Gladys Stanhope '46, freshman representative.

At The Movies CATHAUM— Jim STATE— Springtime in the Rockies NITTANY— All That Money Can Buy

HE Coeds To Celebrate Building's Anniversary; Honor Former Head

Marking the tenth anniversary of the College home economics building, the department will have a tea in the lobby from 3:30 to 5:30 p. m. tomorrow.

Miss Edith P. Chace, director of the department of home economics from 1918 to 1937, will be guest of honor. Under Miss Chace's leadership the department grew from a faculty of 8 to one of 18, from a student enrollment of 150 to one of 450, and from the two ends of the first floor of Women's Building to a spacious three-story building.

Three distinct curricula for women having separate vocational aims and a fourth for men who wish to enter hotel management were developed in Miss Chace's administration. Home management houses, and a nursery school, in which children between the ages of two and four are observed and trained, were also added.

This administration established non-professional home economics courses for students from other schools and organized graduate work.

Ernst Heads Chi O

New officers of Chi Omega, elected at a recent meeting include Ruth A. Ernst '45, president; Frances M. Angle, '44 vice-president; Marian J. Carbaugh '44, secretary; and Janet E. Graham '44, treasurer.

Read Daily Collegian Classifieds

- ROOM FOR RENT—Desirable, light, single room. Innerspring mattress, stoker heat. Reasonable. College Heights, close to campus. Call 2464. 3tch3,4,5
- TO RENT—Single room 138 McAllister street. Call 4368. 3tpd3,4,5SR
- FOR SALE—2 suits; double breasted. One brown, one grey, 42 long. Call Joe 4939 3tcomp3,4,5B
- WANTED—1 or 2 students to share apartment. Preferably engineers. Call 857 2t4,5compW
- WANTED—Male vocalist for dance band. Must be good. Contact Les Stein immediately. KDR house, 3141. 1tchJM
- SMART POCKETBOOKS TO match your outfit in a variety of styles and sizes. Just \$1.00-\$2.50 at Mittens. 1tJN
- Rides Wanted— PW—Kane, Warren, Union City. L. Sat. noon. R. Sun. Call Weed 2007. 2tpd4,5B
- RW—Harrisburg. Leave Saturday afternoon. Call Dave, 4636, leave number if not in. 2tpd4,5
- RW—Pittsburgh. Lv. Fri. afternoon. Rt. Sun. afternoon. Call Marge 4371. 1tcompREM
- PW—York. Lv. 1 Fri. Rt. 2:30 Sun. Call 2214. 2tpd4,5REM
- PW—To Uniontown or vicinity. Leave Friday afternoon. Return Sunday. Call 4641, ask for Larry. 2tpd4,5DW
- PW—Four passengers to Erie. Leave Friday 2:15 and return Sunday p. m. Call Webb 771. 2tpdOB
- RW—To Lewisburg or Milton. Lv. Friday after 3 p. m. Return Sunday. Call Marion, 437 Ath. 2tch.a.f.45
- RW (3)—To Phila. or Lancaster. Leave Friday, Nov. 13th, after 4 p. m. Ret. Sunday. Call 143 Ath Hall. 2tc5,6
- RW—Elmira or vicinity. Lv. Thurs. night or Fri. Rt. Sun. Call 4929, Ray Becker. 1tpdREM
- RW—To Philadelphia. Friday afternoon. Call 4637. Ask for George. 1tpd4RTK
- RW—Lewisburg or Milton. Leave Fri. 3 p. m. Return Sunday. Call Marion, 437 Ath Hall. 2tpd5,6QB
- RW—To Philadelphia for Penn game. L. Thursday or Friday. R. Sunday. Call Emily, 2018. 1tcompSM

We, The Women "We Three Were All Alone..."

"We Three." This would have been an appropriate theme song for WSGA installation ceremonies in Atherton lobby last night.

A grand total of three students were there to see new officers take over duties of an outgoing Senate. Those three, incidentally, had to attend the WSGA meeting which followed at 7 p. m.

We tried hard to think of reasons why no one else was there, but in vain.

It was held at a convenient hour, before classes, other meeting or study hours.

It was held in Atherton Hall, largest dormitory, housing the largest number of coeds.

It was installation for worthy coeds, since they were the voters' choice.

It inaugurated officers of an organization that affects every woman student.

It was a means of introducing newly chosen heads to women who do not know them, and it follows the precedent of the nation.

Past installations have attracted large numbers of women who came to recognize last year's work of one legislative body and show intent to back the projects of the new Senate.

It'd be great if next year we could at least have a fourth for bridge!

—J. H. M.

Navy Wins 4-0 To Lead Series

A smooth-playing Navy hockey team swamped Army 4-0 in the third Army-Navy game on Holmes Field last night to give Navy a 2-0 edge in games. Victory in the fourth game, to be played on Holmes Field at 4 o'clock today, will give Navy the series.

Mottie Haverstick, Navy captain and center forward, tallied two of Navy's four goals; Betsy McGee, inside left, and Helen Hooper, left wing, accounted for the other two scores.

Most of the game was Navy all the way with Navy's forward line cooperating beautifully in scoring drives.

Lineup for Navy included Pat Aloe, right wing; Betsy Robinson, inside left; Mottie Haverstick, center forward; Betsy McGee, inside left; Helen Hooper, left wing; Mary Lou Elder, right half; Mary E. Weldy, center half; Marge Lyons, left half; Grace Judge, right back; Anna Radle, left back; and Ann Sheffield, goalie.

Army players were Arda Ostermayer, right wing; Dorcas Newcomer, inside right; Joan Finn, center forward; Betty Pike, inside left; Lou Schlichter, left wing; Annette Keefer, right half; Eleanor Wills, center half; Olive Wyatt, left half; Mary Ann Jennings, right back; Marge Raines, left back; and Skip Scrivanih, goalie.

WARNER BROTHERS STATE Tel. 866 BUY WAR BONDS AND STAMPS HERE Shows at 1:30, 3:00, 6:45, 8:45 • TODAY - FRI. - SAT. • BETTY GRABLE JOHN PAYNE CARMEN MIRANDA HARRY JAMES AND HIS MUSIC MAKERS CESAR ROMERO SPRINGTIME IN THE ROCKIES IN TECHNICOLOR!

SPECIAL NOTICE!

To Newspaper Subscribers Who Have Their Papers Delivered Sundays

Sunday papers will not be delivered after Sunday November 1st. The tire, gas and equipment situation makes this move necessary... We sincerely hope that it will not be long before we can resume this service to you.

Graham & Sons