

# Seamans, General Secretary, Leaves After 14 Years Of Continuous Service

## Accepts Job With USA National Housing Agency

Many people leave monuments behind them when they depart but very few people can go away and leave behind them living testimonial of their work.

Mr. Harry W. Seamans, general secretary of the Association, who has been granted a year's absence from the CA to work for the National Housing Agency in Washington is one of the few belonging to that latter group.

When he first came to the College in 1928 as general secretary of the YMCA he had a \$6,500 budget to work with. In 1934, when the YMCA merged with the YWCA to form the present PSCA, it was Mr. Seamans again who worked tirelessly to expand and strengthen the CA until it is now recognized as one of the most important groups on campus.

The budget this year, to show the enlarged scope of the organization, was more than \$13,000.

The CA is now strong enough to stand on its own feet and in spite of the fact that its leader is gone temporarily it will continue to carry on the programs established and built up by the "human dynamo" that has headed it for the past 14 years.

Mr. Seamans worked his way through Park College in Missouri—and finished \$500 to the good.

### Next Handbook--

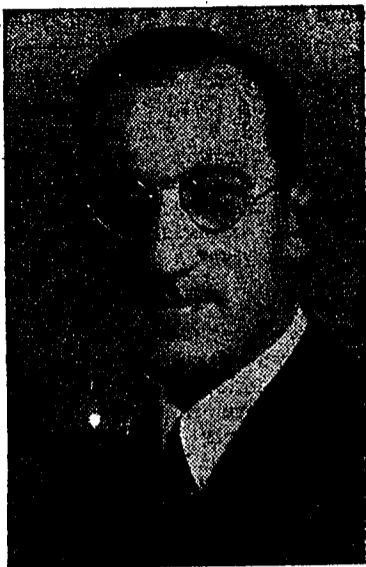
(Continued from Page One)

as the "Frosh Bible" it represents the basis of every freshman's necessary equipment.

The 1942-43 book, which has had the distinction of being the "Bible" for three classes, was edited by Robert E. Schooley '43 with the assistance of Lila E. Whoolery '43 as women's editor, Jean L. Seanor '43 and William Patterson '43 as business managers.

The supplement and the handbook which will follow it when the time comes for it will be edited by Robert E. Kinter '44. Helen R. Keefauver '44 will serve as women's editor, William C. Patterson '43 as business manager, and Jean C. Fisher '43 as advertising manager.

### Leader On Leave



Harry W. Seamans

### PSCA Prexy



Jean E. Hirshberger '43, president of the Penn State Christian Association, will return from practice teaching long enough to attend the "Kick-Off" Dinner tomorrow night. Miss Hirshberger will tell why it is important to support the PSCA. In Miss Hirshberger's absence, Palmer Sharpless '44, has been serving as acting president of the Cabinet.

## Seamans Releases PSCA Financial Budget For 1941-42

The budget for the Penn State Christian Association during the fiscal year ending June 30, 1942 was released recently by Harry W. Seamans, general secretary.

Expenses have increased with the scope of the CA from \$6,000 in the 1925-26 budget to more than \$13,000 this year.

### INCOME

Penna. State College . . . . .	\$ 4000.00
Students and Faculty . . . . .	5259.87
Parents . . . . .	2639.20
Alumni and Friends . . . . .	1009.28
State College Friends . . . . .	66.00
Endowment Fund Income . . . . .	236.42
Lodge Fees . . . . .	87.60
Mimeographing Service . . . . .	43.96
Miscellaneous Income . . . . .	89.49
Book Store . . . . .	1.00
PSCA Amplifier . . . . .	2.00
<b>Total Income . . . . .</b>	<b>\$13434.82</b>

### EXPENSE

<b>General Operating Expense</b>	
Finance Solicitation (B-1) \$ . . . . .	842.28
General Expense (B-2) . . . . .	478.75
Office Expense . . . . .	168.37
Postage . . . . .	166.67
Salaries (B-3) . . . . .	9781.92
Secretary Travel and Conference Expense . . . . .	219.62
Bad Debts . . . . .	25.00
Depreciation (B-4) . . . . .	208.02
<b>Total Expense . . . . .</b>	<b>\$11890.63</b>

### Program Expenses

Cabinet General Projects (B-5) . . . . .	\$ 604.16
I. Inter-collegiate and World Relations (B-6) . . . . .	62.60
II. Organized Groups (B-7) . . . . .	516.39
III. Religious Emphasis (B-8) . . . . .	50.12
IV. Public Affairs (B-9) . . . . .	45.34
V. Campus Action (B-10) . . . . .	166.52
Personnel Committee (B-11) . . . . .	6.29
Spakers and Forums (B-12) . . . . .	107.75
Mis. Contingent Program . . . . .	510.95
<b>Total Program Expense \$ . . . . .</b>	<b>2071.12</b>

Grand Total of Expense . . . . . \$13961.75

Net loss for the period . . . \$ 526.93  
Comparison with prior years was impractical because of change in classification of program expenses.

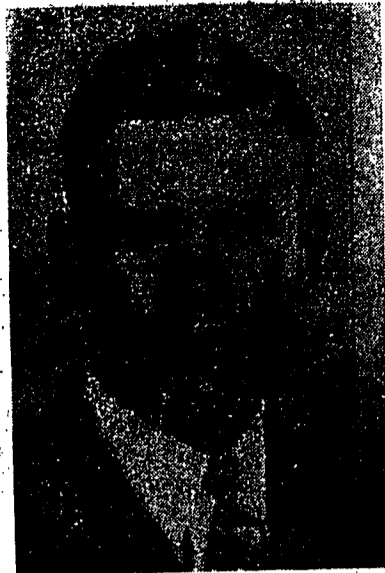
## Junior Class Proxy



Jack R. Gray

"Penn State's Student Government has been quick to support any movement that is beneficial to all or part of the College and should heartily endorse this campaign."

## Frosh Leader



Jack C. Berlin

"We should support the PSCA Finance Campaign because of the fine projects it promotes. The orientation in college life that many freshman, including myself, had at the CA camp has proven itself to be indisputably helpful in becoming acquainted with Penn State."

## Freshman Forum Members Complete Organization Plans For Coming Year

Under the leadership of Claire Weaver, Louise Ritter, Mim Zartman and "Skip" Ramaley, Freshman Forum, the PSCA Freshman Women's group has been effectively organized for the 1942-43 year.

Every member of Forum has been put on an active committee responsible for the functioning of the Christian Association program for women.

Officers of the committees include, Music and Worship, Peggy Claridge, chairman, Dorothy Hoke, secretary; World Student Christian Federation, Lois McCool, chairman, Norma Milich, secretary; Program Planning, Vera Owens, chairman, Ruth Clark, secretary; Publicity, Betty Shenk chairman, Pat McClure, secretary; Service Projects, Rosemary Carroll, chairman, Marty Lavis, secretary; Recreation, Thelma Iager, chairman, Joanne Nye, secretary.

Programs for the Fall include a radio broadcast of "Information Please" in which PSCA Cabinet members explain the Christian Association set up to Freshmen.

## Association Aided Groups To Begin

Not only has the PSCA carried on an active program from year to year, but it often sponsors events jointly with other groups. Many organizations and events have been started with the aid of the PSCA.

It helped start the Christmas carol sing, Old Main Open House programs, student housing cooperatives, student counselor programs, freshman mass meetings, student-faculty relations committee, student handbook, or "Frosh Bible," Penn State Club, interfraternity pledge dinner, Phi Eta Sigma, Artists' Course, Independent Men's banquet, campus tours, employment bureau, and room list service for men.

This organization has been responsible for fireside sessions, terrace movies, outstanding speakers, discussion groups, overnight cabin parties, hikes, outdoor chapels, church preference service, community service projects, social inquiry trips, and special seasonal services.

# Stein, Zartman Announce Names Of Drive Solicitors

(Continued from Page One)

Murphy, Harold Epstein, Phillip Mitchell, Roy Barclay, Robert Derkin, Harvey Scheiner.

### Section II

#### SECTION CHAIRMAN

John C. York

#### Division Leader:

Norman Weisberger  
Solicitors: Gilbert Weinberger, Harold Epstein, John T. Watkins, Howard M. Snyder, Harold Benjamin, Harvey Scheiner.

Division Leader: Phil Thomforde  
Solicitors: Larry Linvill, Donald Pratt, William H. Folwell, Jack Gohee, Harry O. Kimmel, Edward Hannum, Robert Marshall.

Division Leader: Dick Kurtz  
Solicitors: James Arnold, Joseph Rusnock, Robert Peregrini, Donald Schissler, James Redmon, Wilbur Eby, Bill Bastian.

Division Leader: Kehl Markley  
Solicitors: Charles Aikman, Don Heisler, Bob Rath, Dudley Snyder, Ed Tredway, Ed Kushibab, Warren Shreve.

Division Leader: Irvin Kochel  
Solicitors: Arthur Simmers, Warren Houck, Pete Lohmann, Ed Beer, John Dabler, Ernst Russell, Gerald Russell.

#### Division Leader:

Chuck Gundlach  
Solicitors: George Elder, Fred Hughes, Dean F. Fyock, Wayne

A. Dennison, Donald Clark, Robert Huffman, Harry Ernest, John Kerns, Martin Yarnall.

### Section III

#### SECTION CHAIRMAN

Bill Patterson

Division Leader: Larry Rubright  
Solicitors: Ronald D. Clark, Fred S. Weaver, John McAllister, John Ziesenheim, Jack Glassburn, Al Vigilante, George Cohen.

Division Leader: J. D. Hess  
Solicitors: Edward Koval, Earl Fox, J. Emil Withrow, Dominick Berardinelli, Robert Leach, Herbert Lewis.

Division Leader: Maur Levan  
Solicitors: Maur Dubin, Ed Sohn, Al Greenberg, Lewis Jaffe, Robert Rae, Robert Gates, Adelbert Sampson.

Division Leader: William H. Cissel  
Solicitors: Milton Dinowitz, Paul Lowry, Bill Bayer, George Winne, Bill Owen, Charles McFadden, Larry Somach.

### Section IV

#### SECTION CHAIRMAN

Bob MacNabb

Division Leader: Dick Tittley  
Solicitors: Dan Bolef, Jake Kurtz, Lowell Pierson, Doc Katcher, Bud Beckstine, Charles Cook.

Division Leader: Howard Carlson  
Solicitors: Jack Ennis, Eugene

Harris, Glenn Conklin, Bob Ritzmann, Ben French, Ralph Ellingsen.

Division Leader: Fred Weller  
Solicitors: Jack Finley, Paul D. Bender, Bob Wheeling, William Fanus, Howard Mason, Fred Weller.

Division Leader: Cy Rosenberg  
Solicitors: Herbert Baylin, Herman Weih, Gene Judd, Paul Wittenberg, Abby Krass, Earl Kuntz.

Division Leader: Bud Peterson  
Solicitors: John Mitchell, George James, Ernie Beutner, Bill Randolph, Alvin Grabusky, Roger Tobias.

Division Leader: Ralph Snyder  
Solicitors: Bob Roy, Phil Lieberman, Norman Howells, Walt Gerson, Russ Petebone, Joe Ehrlich.

Division Leader: Dan Gillespie  
Solicitors: George Budd, Gerald Balsbaugh, Stanley Shaw, Larry Shiffer, Bob Fredrickson.

### Section V

#### SECTION CHAIRMAN

Bob Dickey

Division Leader: Bill McBride  
Solicitors: Ed Zemprelli, Vernon Guest, Jack Taylor, William J. May, Francis French, Pau Leahey, Larry Redding, Ernest R. Rotili.

Division Leader: Jack Burford  
Solicitors: Ray Bitting, Don Sandercock, James Cowan, Lloyd Tircaut, Jack Burford, Cadmus Goss.

Division Leader: Clayton Northrup  
Solicitors: Jack Dolly, Robert W. Lewis, Edward S. Barben, John D. Erb, W. Joseph Bartschat.

Division Leader: George Smith  
Solicitors: John Sevinsky, Robert

P. Cathcart, Michael Durilla.  
Division Leader: Bob Kintigh  
Solicitors: James Well, Alvin Allison, Jack Kierman, Francis Kennedy, H. Ernest Murphy.

Co-Division Leaders:  
Walt Rechenberg  
Ralph Johnston  
Solicitors: Kenneth Sterrett, Donald Rose, Donald Welker, Raymond Strook, Ralph Johnston.

### Section I

#### SECTION CHAIRMAN

Pat Middleton

Division Leader:  
Jane McChesney  
Solicitors: Barbara Wells, Kay Hibbard, Lucille Bell, Polly Huber, Eveyn Kohler, Marjorie Cherry.

Division Leader: Ginnie Krauss  
Solicitors: Jane Cromis, Dotty Clymer, M. K. Noll, Ruth Miller, Marie Weiss, Kay Brong, Helen deMartini, Rosalind Nelson.

Division Leader: Ruth Steiner  
Solicitors: Ronnie Mazur, Marion Krape, Dotty Wallace, Phyllis Strittmatter, Potty Strittmatter, Anna Louise Brown, Alice Jane Herr, Kathryn Simone.

Division Leader:  
Dorothy Mognet  
Solicitors: Cathy Miller, Perky Cobb, Marge Schultz, Lois Gardner, Mary Grimison, Miriam Rust, Velma Braun, Cleo Mellot, Mary Pickering, Julia Moore, Barbara Rubin.

### Section II

#### SECTION CHAIRMAN

Claire Weaver

Division Leader:  
Hattie Van Riper

Solicitors: Jane Christie, Gloria Moyer, Norma Jean Glenn, Alice Geyer, Jean Dahlin.

Division Leader: Florence Jaffy  
Solicitors: Peggy Thompson, Vera Owens, Muriel Bogardus, Eileen Bragg, Catherine Garner.

Division Leader: Nancy Zartman  
Solicitors: Ruth Sprague, Pete Ritter, Nancy Ferris, Marjorie Rude, "Tommie" Ehlers.

Division Leader:  
Ruth Pielemeier  
Solicitors: Emily Shank, Barbara Anderson, Ruth Bamer, Dorothy Link, Bette Dux, Sarah Thompson, Margaret Haden, Ruth Pielemeier, Mona Shibli.

### Section III

#### SECTION CHAIRMAN

Barbara Painter

Division Leader: Winnie Singer  
Solicitors: Barbara Keast, Chris Yohe, Terry Krakovesky, Martha Horn, Lois Lohrke, Jane McChesney, Joan Paulhamus, Mable Satterthwaite, Velma Anstadt, Ruth Storer.

Division Leader: Jean Ogden  
Solicitors: Helen Rummel, Marjorie Renner, Jane Neetzow, Millie Feeser, Rachele Meisel, Doris Payton, Betty Jane Yost.

Division Leader: Ruth Clyde  
Solicitors: Grace Gray, Margaret Hussey.

Division Leader:  
Betty Funkhouser  
Solicitors: Betty Pike, Betty Ann Condon, Jean Butz, Lois Lunn, Nancy Norton, Mary Anne Jennings, Jacqueline Falloon, Jane Stewart, Rosemary Carroll, Caroline LeWorthy.