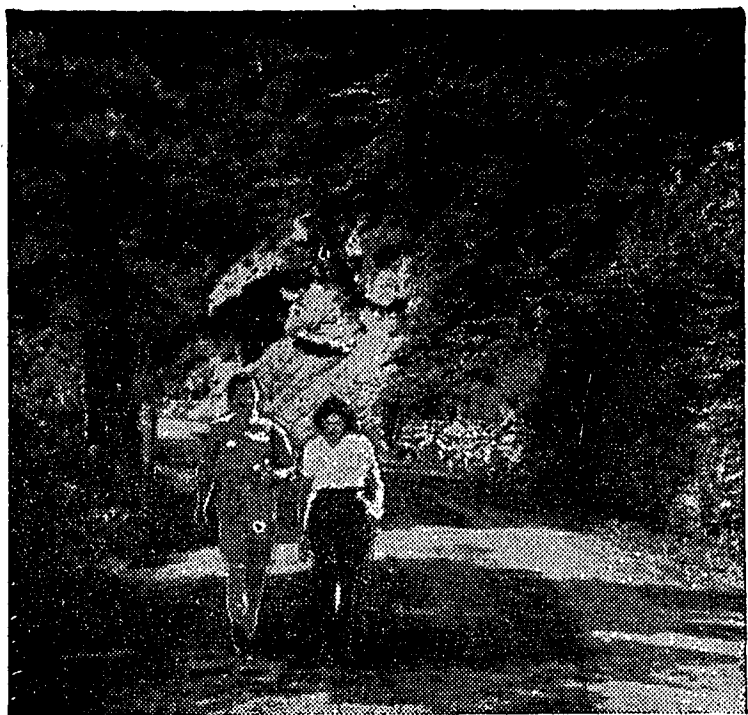


It's Heigh-Ho And Away We Go . . .



Two students go hiking along the beautiful country road, now flanked by a brilliant array of colors, to spend an afternoon at the PSCA Lodge which is hidden away in the forest far from the hustle and bustle of College life. Student groups hike out to the cabin nearly every week-end that the weather permits.

Nature Lover's Suggestion Led To Erection Of Lodge

"Penn State should have a cabin in Tussey Mountains, easily accessible to the college."

It was this suggestion of an ardent nature lover that led to the erection of the PSCA Lodge at Shingletown Gap, four miles from State College.

The cabin, a stone lodge built on a 14 acre plot of land, is comfortably equipped with a lounge, kitchen, dining room, sleeping quarters, and two large fire places.

It was completed in the spring of 1927, and in the past 15 years thousands of students have gone annually to this mountain retreat.

One reaches the lodge only after passing through a cool, dense forest of pine, hemlock and a heavy undergrowth of laurel and rhododendron.

Groups can use the cabin for an afternoon or, if they so desire, they may stay overnight.

There are various purposes for such lodge retreats—work, social, program planning, committee meetings, and conferences.

Dean Emeritus Ralph L. Watts said, "Measured by the number of students who are rejuvenated

in mind, body, and spirit at the Penn State Christian Association Lodge and by plans considered there by groups and individuals for more creative and productive living, it must be reckoned among the most important buildings of the Pennsylvania State College."

While the PSCA is willing to cooperate with groups desiring to use the Shingletown Gap retreat, they have established policies that must be followed at all times.

The lodge must be kept in clean, orderly condition at all times and must be left in the same condition that it was found—well-kept.

An organ was recently donated to the lodge for use in Sunday morning worship services.

Cabinet Serves As Policy-Maker For Organization

Jean Hershberger '43
Heads Association

Elected annually in the second semester, the Student Cabinet of the Penn State Christian Association serves as the policy-making group in the organization. Consisting of five officers and sixteen commission chairmen, the Cabinet deals with all phases of Association program.

Jean Hershberger '43, president of the Association, has led the Cabinet through a year of readjustment to meet student needs in a national crisis. Assisted by Palmer Sharpless, '44, now acting president; Joan Paulhamus '45 vice-president; Clifford Painter '44, treasurer; Gerald Stein '44, recording secretary, and Robert Kintigh '43, corresponding secretary, Miss Hershberger has piloted the Cabinet through a year of extensive activity.

Because of the national emergency, the Association program has emphasized such activities as rural service for farmers in harvesting necessary crops, a Community Playgroup for children of parents who are working, special movies on phases of the war, an emphasis on worship in Outdoor Chapels and at the PSCA Cabin, an attempt to create wholesome recreation through Old Main Open House programs, and many other essential projects.

In charge of the various commissions are Phyllis Watkins '44 and Herbert Kraybill '44, Intercollegiate and World Fellowship; Margaret Ramaley '44, and Howard Carlson '45, New Student Program; Robert Dickey '44, and Virginia Krauss '45, Religious Emphasis; Mabel Satterthwaite '43, and Reagan Houston '45, Public Affairs and Community Service; Daniel Gillespie '44, and Miriam Zartman '45 Campus Action; Paul Woodland '44, and Grace Gray '45, Publicity Committee; Patricia Middleton '44, and Ralph Harris '45, Personnel Committee; Robert MacNabb '44, and Hattie Van Riper '44, Public Meetings Committee.

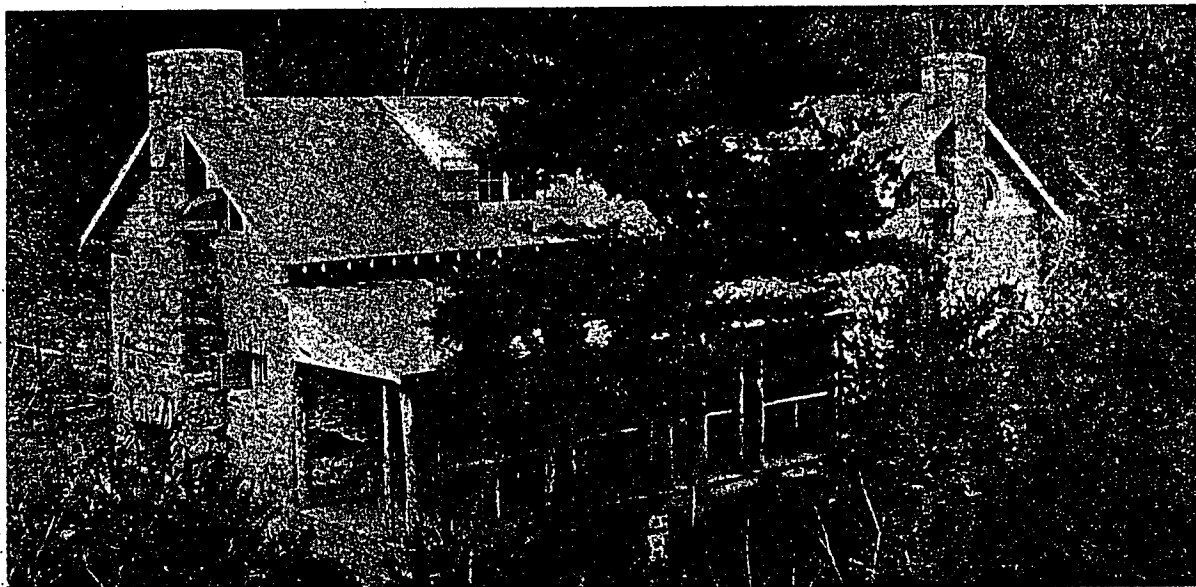
Correspondence Course Is New CA Project

One of the newest PSCA projects is the correspondence series between students at the College and students in South American universities which was started by Peter Danos '43.

Students leaving their name at the PSCA office along with the name of the course in which they're enrolled will have it sent to some South American Senior or Senorita who is enrolled in a similar course.

Danos had initiated similar projects before coming to Penn State. When he left England, over 4,000 students in Europe were writing to other college people, chiefly because of Danos' efforts.

To The PSCA's Mountain Lodge . . .



The PSCA Cabin, built in 1927, is named for Dean Emeritus Ralph L. Watts. It is located in Shingletown Gap, only four miles from Old Main, and is used by thousands of students annually. Facilities for meals can accommodate 65, while 40 persons can be taken care of in the sleeping quarters. Application for use by any organization may be made at the PSCA office. The Lodge is available for overnight hikes or cabin parties.

Clifford M. Painter Will Preside Over Regional Council

When the Regional Council of the Student Christian Movement of the Middle-Atlantic Region meets in Philadelphia the weekend of November 14, Clifford M. Painter '44, chairman of the council and Penn State representative, will preside.

Painter, was elected chairman of the Student Christian Movement of the Middle Atlantic Region at its June conference. He was Penn State's representative to the National Intercollegiate Christian Council held at Wake Forest, Illinois last summer and while at the Council he was chairman of the committee discussing Students and the Pioneering Church.

This is not the first time however that a Penn Stater has been a leader at the conference. During the June meeting held at Camp Kanestake, K. Elizabeth Howe '45, presided. Miss Howe was also Chairman of the Christian Movement for this region.

Hut Once Site of PSCA

From 1918 to 1930 the PSCA was housed in a temporary building which was built by the Army YMCA for students of Penn State during the years of the last war. Besides the "hut," there were also two offices in Old Main.

Churches Aided By CA Workers

PSCA cooperates with town church groups in arranging programs, providing meeting places, and sponsoring activities.

Secretaries of the PSCA are members of the Student Religious Workers' Council. They compile and distribute student church preference cards and a calendar of College PSCA events and speakers. The PSCA sends out information to all prospective freshmen concerning local church facilities and programs planned for the year.

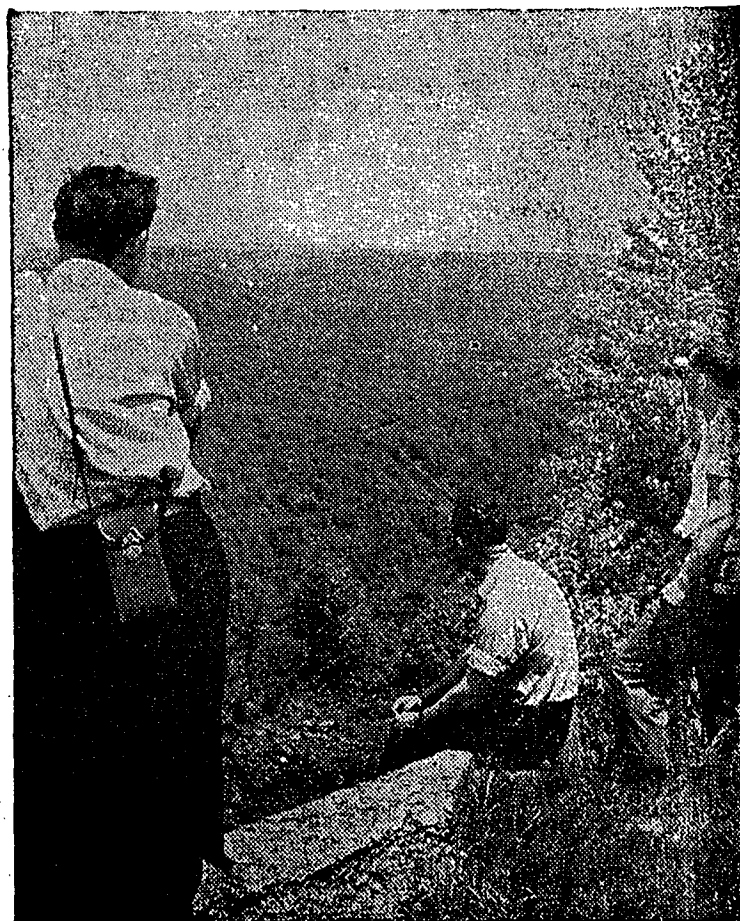
Churches and the PSCA join in the selection and promotion of speakers brought to the campus.

Conference and meeting rooms are provided for religious workers and church student groups. They also make use of the Ralph Watts Lodge for weekend retreats and conference. Worship study groups usually include both PSCA representatives and members of the various student church groups.

Pamphlets On Sale

On sale at the PSCA offices are selected pamphlets and booklets secured for student purchase. These publications deal chiefly with religious, economic, international, racial, political, and moral problems.

For A Day Of Relaxation And Pleasure



After unpacking and while waiting for mealtime, students often stroll about the 14 acres surrounding the Lodge that are owned by the PSCA. Such views as this are within easy access to the Ralph Watts Lodge. The Cabin is still available to groups that desire to take autumn hikes or groups that would like to plan an overnight party at the Cabin.

Acting PSCA Head



Palmer M. Sharpless '44, PSCA vice-president is acting head of the organization while president Jean E. Hershberger '43, has been away from the College practice teaching.

Committee Will Plan Second Annual IM Dinner

The second annual Independent Freshman Men's Banquet will be held in the Nittany Lion Inn at 5:45 p. m. Sunday, November 18th, according to Daniel C. Gillespie '44, member of the PSCA Cabinet in charge of the program.

Dr. Harry B. Taylor, minister of First Presbyterian Church of Syracuse, New York, will be the guest speaker for the occasion.

Last year 200 freshman men attended the banquet, at which Dr. Fred Iglar, Executive Secretary of the Christian Association at the University of Pennsylvania, spoke.