

### Hardening The Hard Way



Flushing, L. I., high school Commandos run off plank, vault high, finish with full somersault as part of pre-military hardening program. In size about the same as Penn State's School of Physical Education obstacle course, the Flushing course is over 100 yards long.

## Between The Lions

With DON DAVIS

### Oldest Rivalry

Both Penn State and Bucknell are now tapering off for their 32nd encounter to be staged on New Beaver Field tomorrow afternoon. It is the Lion's oldest rivalry, having started back in 1887 when State trampled the Bisons, 54-0.

Both teams are well aware of the length, spirit, and sportsmanship of this rivalry. Evidence of this was again stressed in a recent release from Lewisburg, stamping ground for the Thundering Herd. Coach Al Humphrey dismissed his charges early from practice so that co-captains Sokol and Anderson might explain to their teammates the reputation which the Bisons has established in the eyes of Lion followers in recent years.

Sokol pointed out, "Penn State is keeping no secrets—they regard us as dangerous foes and we must be prepared to deliver the goods they are expecting."

We only hope that the State gridders are as fully aware of these facts concerning a game at which, literally, "anything can happen—and probably will."

## Soccermen Anxious For Action; In Top Form For Gettysburg Game

Real action at last.

That's what Coach Bill Jeffrey's soccermen were elated about at the end of yesterday's practice scrimmage. The Lions meet Gettysburg on New Beaver Field tomorrow at 1:30 p. m. in their first intercollegiate competition since last November.

In top form after twilight rehearsals all Summer and afternoon workouts since the beginning of this semester, "The Scot's" 1942 team is probably the "conditioned, inshapened, practiced" booter squad in Blue and White, if not international, history.

Only one dark cloud hung over the locker room. Allen Heck, veteran fullback back in uniform this Fall after a Summer of high blood pressure, suffered a leg injury Thursday and will be out of action for tomorrow's game.

Although Coach Bill did not announce any definite starting line-up, the first squad will probably consist of Johnnie "Miracle Save" Struck at goalie; Captain Hap Freeman and Bill Deitrich, substitute for Heck, at the fullback posts; Sammy Schure and Boyd Eppers in at halfback; Bill Pritchard, Jose Lombana and Smiley

Williams at the inside right, inside left, and center forward positions; and Charley Lischer and Paul Bender on the flanks at outside left and outside right.

Probable substitutions during the contest will be Bob Seavy at goalie; Dean Hartman, Dick Wesner, Bobby Fast, and Max Chenoweth at halfback; and Frank Klase, Bob Gehrett, Lloyd Black, and Bob Vail on the forward line.

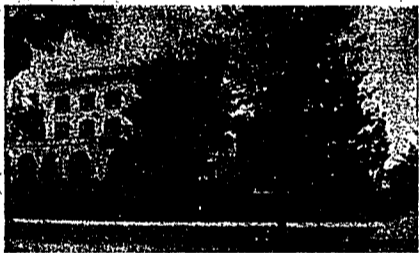
Stopped by Army, 1-0, last November after nine and a half seasons without defeat, the booters are out to continue the new unbeaten streak they started in their late season games last year. And if the many practice sessions have been any indication, this year's team seems headed for another of the unmarred records, which were so common previous to last year's West Point "perfect record" Waterloo.

The team managers issued a second call last night for all first or second semester freshmen interested in trying out for the booter managerial job. Candidates should report to Rec Hall or the field anytime after 3 p. m. today, or contact Rolly Sutherland, Al Letzler, or Bob Galley, all juniors, first assistant managers.

## Kappa of Phi Sigma Kappa



R. H. ROY  
President



Welcomes Penn State's Guests for Interfraternity Ball Weekend

### Scientific Predictions

In tomorrow's column and every Saturday for the remainder of the grid campaign we will run football predictions. Not satisfied with consulting oracles and the like, Collegian sports-writers will attempt to scientifically determine the probable winners.

To do this, a five-man board of so-called experts will be pressed into service. The team getting the nod from the majority of these experts will be The Daily Collegian's official choice. The five appraisers will be Bob Schooley, Dom Golab, Fred Clever, Micky Blatz, and yours truly.

### Kappa Alpha Theta 1st Women's Fraternity

Established at DePauw University, Indiana, in 1870, Kappa Alpha Theta was the first Greek letter fraternity organized for women. At Penn State Nita-Nee local club, the first one on this campus, received a charter from Kappa Alpha Theta in 1932, as the Beta Phi chapter.

Marjorie L. Sykes '43, house president, is also chairman of WSGA Judicial Committee, a member of Mortar Board, senior women's honor society, Theta Sigma Phi, women's journalism honorary, and a member of the Daily Collegian senior business board. Other Thetas are also active on the campus.

### DU Owns Most Fraternity Property

Phi Tau, local social fraternity, became Delta Upsilon December 8, 1911. The Penn State Chapter of Delta Upsilon owns more fraternity property than any other fraternity in the world.

Some of the outstanding members of this house include J. Michael Kerns '43, football, wrestling, and Thespian star; Thomas J. Goodwin, captain of the ice hockey team; M. Clay Hull '44, captain of the tennis team; Charles E. Fairchild '44, captain of the ski team; and Wallace G. Muffit '44, track manager.

### Honorary Holds Smoker

Professor's Hummel Fishburn, acting head of the music department, and Robert Dengler, head of the classical languages department, addressed members of Phi Mu Alpha, national professional music honorary, at its annual smoker recently.

## ZETA CHAPTER



## Kappa Delta Rho

Welcomes Penn State's Guests

## PSI CHAPTER of Phi Kappa Sigma



Welcomes INTERFRATERNITY BALL WEEKEND GUESTS

## PENN STATE CHAPTER OF

## PHI GAMMA DELTA



Welcomes You to I. F. BALL WEEKEND