

WOMEN IN SPORTS

'43 Wins Again!

Scoring every goal, Pauline Rugh led a determined junior hockey squad of eight players to 6-1 victory over sophomores yesterday. "Bea" White made the lone soph goal.

The line-up:

Juniors: M. Haverstick, r. i.; S. Pitting, c.; P. Rugh, l. i.; M. Duffman, c. h.; P. Crossman, l. h.; L. Dunkelberger, r. b.; J. Holmes, l. b.; S. Scvivanich, g.

Sophomores: B. White, r. w.; M. Cookerly, r. i.; F. Angle, c.; W. Spahr, l. i.; H. Hooper, l. w.; M. Weldy, r. h.; F. Burke, c. h.; A. Levin, l. h.; G. Judge, r. b.; A. Burwell, g.

Twelve women started Monday to take a two-week course sponsored by WRA Swimming Club. Student teachers, who have instructor's certificates, include Helen E. Schneider '42, Mildred L. Austray '43, Betty J. Billett '43, Teresa C. Marusak '43, Florence N. Wiley '43, Mary E. Wertz '44, and Betty J. Wiley '44.



HOSTESS—Miss Marie Haidt, director of women's physical education, welcomed 250 townspeople, faculty members and students to White Hall's third annual Open House from 7 to 10 o'clock last night.

Honorary Entertained

Members of Sigma Delta Epsilon, graduate women's scientific fraternity, and graduate women in science were entertained at a buffet supper by Mrs. V. R. Haber, of State College, and Miss Mary L. Willard, assistant professor of micro-chemistry, at Mrs. Haber's home on Sunday.

Read The Collegian Classifieds

Grange Students Will File Points

Plans for the second transfer coffee hour and filing of point system cards for Grange dormitory and sorority houses were completed by WSGA Junior Service Board yesterday.

Juniors and sophomores in Grange will file officer and membership points in Grange lobby at 10 p. m. next Thursday. Service Board representatives will visit sophomores and juniors living in sorority houses this week.

Women acquiring points after filing cards should contact a WSGA Junior Service Board or Senate member.

R. Helen Gordon '42 will be mistress of ceremonies at a transfer coffee hour open to all coeds in northwest lounge, Atherton Hall, from 6:30 to 7:30 p. m. Sunday, November 1.

Committees appointed by Natalie A. Siebert, chairman, are Ann T. Drivas, Jean A. Kelly, and E. Miriam Jones, refreshments; Martha N. Albert and Marjory I. Zint, program; Marjorie E. McFarland and Lorraine E. Thomas, arrangements.

Home Ec Instructors To Speak At Conferences

Misses Amy G. Gardner and Ruth L. Bonde, associate professors of home economics, will participate in the Bucknell Conference on Education to be held at Bucknell University, tomorrow.

Miss Gardner will speak during the Art Education program and Miss Bonde during the Consumers' Education program. "Education Today for Tomorrow" is the theme for the conference.

Misses Ina Padgett and Phyllis K. Sprague, associate professors of home economics, will represent the College at the annual convention of the American Dietetics Association at St. Louis, Mo., next week.

Club Plans Dorm Dance

The Penn State Club invites all freshman women to a dance in Women's Building from 8 p. m. to midnight tomorrow. The program will include novelty numbers and refreshments.

Dorms Plan Libraries

Plans for a library in each of the men's dormitories on the campus are now being completed, Carl T. Rentschler '42 announced yesterday. The books for the libraries are now at the Irvin Hall office.

We, The Women Perennial Question—'How To Enter WSGA?'

"How do we get in WSGA?" interested freshmen ask, willing sophomores continue, juniors abandon and after three and a half years—seniors still wonder.

Able and well-qualified coeds who wish to take an active part in this organization—their organization—are prevented from doing so because they don't know the ropes. Willing workers for committees are overlooked, because they have no definite method of showing their interest, and come elections, they are not eligible for lack of experience.

Either the system is wrong fundamentally or there is a hitch in its efficient functioning, for each year we find many examples of women who turned their interests to other channels after an almost impossible attempt at student government.

Not that we think there are enough opportunities in one organization for many to participate. Not that we think it unfortunate that coeds choose other activities. We only lament that when so much weight and importance is laid to the holders of WSGA offices there is not a greater opportunity for more to tryout.

Petition System

A central committee system is now proving very satisfactory for coeds at the University of Michigan and has many workable features, which could be readily adapted to our situation.

Instead of the haphazard selection of committeewomen and chairmen which we have, a board of five junior and senior women who represent the main branches of WSGA choose committee members from petitions submitted by those coeds desiring to help.

The annual Christmas Dinner, for instance, is one project which requires much work, originality, and time. At Michigan, the project would be announced in ample time and all those interested in this particular job would submit petitions to the central board. The board would go over the petitions, pick the most suitable women with a view toward their other activities, and appoint them to the Christmas Dinner committee.

In this way only those who are interested and willing do the work. The people with other activities will not be burdened further, and it will be a splendid op-

Herrman '42 Elected To Players' Office

Elinor F. Herrman '42 was elected vice-president of Players last night to replace Civia Cohen ex-'43, who did not return to College.

Miss Herrman will automatically take over the duties of Jean Babcock '42, president, who will practice teach the second eight weeks of this semester.

John E. Miller, assistant publications director of summer session, was elected social chairman.

portunity to scout new talent for future larger and more responsible jobs

It's worth a try.

—A.M.M.

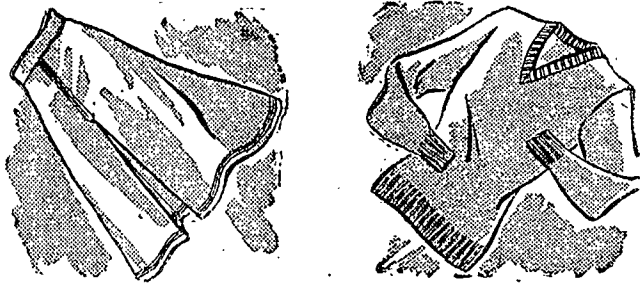
SELECTED BROADCASTS

TODAY

Music lovers will enjoy Haydn's Symphory No. 102 offered by WQXR at 8 p. m.

Don Ameche and Connie Boswell are the stars of WLW's variety program at 9 p. m.

SWEATERS & SKIRTS



On the campus, in classrooms, or on dates—skirts and sweaters are tops!

You'll need plenty of blouses, too, for added variety. There is a complete selection of these at the—

SMART SHOP

Half Price

DOROTHY GRAY

3 cleansing creams

REGULAR \$2 VALUE

\$1.00 EACH

LIMITED TIME

Specialized for YOUR skin-type

For dry skin—DRY-SKIN CLEANSER (Cream 683) —Cleansing plus lubrication. After use, skin feels smoother, looks sweetly, softly clean.

For medium-dry skin—SALON COLD CREAM—Bland and pure. Softens, freshens as it cleanses. Perfect for a young complexion.

For normal or oily skin—LIQUEFYING CLEANSING CREAM—Light, thorough. Removes clogging dirt. Leaves skin crystal-clean.

Subject to 10% Federal Sales Tax

Rea & Derick, Inc.

Allen Street Next to Bank Clock

CLASSIFIED SECTION

WHAT'S COMING OFF? 7tch 10 17—JM

ROOM FOR RENT—132 W. Beaver ave. Single or double. Phone 814. 3tch Oct. 16 S.

FOR SALE — Green ping pong table, official size. Concert guitar, excellent condition. Reasonable. Call 2148. 2tpd 10-16-41 C

FOR SALE—Two tuxedo suits. Complete. Good condition. Sizes 38 and 40 Call 2359 or 363 Ridge Ave. 3tch 16; 20, 24 S.

Rides Wanted

P.W.—Pittsburgh. L. Friday afternoon. C. Wally. 4723. 2tpd 15 16.

R.W.—Pittsburgh. L. Fri. 2. Call F. Bontempo 3rd floor Jordan Hall 711. 2tpd 15 16.

R.W.—Pittsburgh early Friday p. m. Call Potter, Tel. 789.

R.W. (2)—Reading or vicinity and return. L. Friday at 5 p. m. C. Bill, 2861.

P.W. (3)—Baltimore—L. Friday 4 p. m. R. Sunday p. m. C. Bob Kearns, 2544.

R.W.—Pittsburgh. L. early Friday p. m. C. Potter, 789.

P.W. (3)—Baltimore. L. Friday 4 p. m. R. Sunday p. m. C. Bob Kearns, 2544.

- ◆ Dance Programs
- ◆ Show Cards
- ◆ Letterheads
- ◆ Circulars

Printing Done For All Occasions

NITTANY

Printing & Publishing Co.
129 South Frazier St. Dial 4868

BUY YOUR **MEN'S CLOTHING** AND FURNISHINGS ON OUR 3 POINT CREDIT PLAN

1/3	1/3	1/3
Down	10th Next Mo.	10th Fol. Mo.

No Extra Charge For Credit

Charles' Fellow Shop
109 S. Allen St.

State

Shows at 1:30, 3:00, 6:30, 8:30

TODAY - FRIDAY

LEON OF THE TROPICS

ONLY A LOVE AS RECKLESS AS THEIRS COULD BRAVE THE JUNGLES VENGANCE!

with Constance BENNETT Jeffrey LYNN

Coeds—

IT'S A PENN STATE TRADITION

Ask Your Man To

CWEN DANCE

October 24th

White Hall—9-12

NITTANY LION ORCHESTRA . . . \$1.10