

### Fraternity Problems Plan Proposed To Cut Food Bills

Editor's note—This is the first of a series of articles presenting possible solutions to the problems of the fraternity system.

The number of fraternities at Penn State has dropped at an average rate of one a year for the past 10 years, there being 57 houses in 1931 and 46 left today. One valid reason for this decline in fraternity fortunes lies in the higher cost to a boy's "going fraternity."

One solution to this problem of keeping fraternity house bills lower, namely, cooperative buying of food, has been suggested by IFC president, H. Edward Wagner '41, and through Collegian's editorials. Although this plan of having fraternities buy food cooperatively has aroused considerable campus interest, another idea has been put forward that may be worthy of consideration.

The purpose of this second idea is to enjoy most of the low cost cooperative buying advantages, have the services of an experienced dietician to plan fraternity meals, and at the same time not disrupt the present system of buying food through the local merchants. Some fraternities might be in no condition to sever such relations.

Such a set-up would call for a central office, staffed by a dietician and a manager. The dietician would study the preference of each fraternity and give them advanced menus, scientifically planned for healthful balance. She would also visit each fraternity for half a day every few weeks, and in cooperation with the cooks, iron out any specific problems, such as tough pie crust or poor coffee.

The manager would act as mediator between fraternities and merchants. He would have available market information and prevailing food prices. Thus he would be in a position to approach a local grocer with, "Twenty fraternities do business with you. They will all want fresh peas next Thursday. We know what peas are worth now and will expect your price accordingly."

### News Briefs

(Continued from Page One)

job committee member. City Chambers of Commerce are being questioned by the committee on the opportunities each city can offer to College students. Summer resorts and camps in New Jersey have already been contacted for job availability. Responses to these queries are expected soon. Representatives from resorts and camps, as well as for other summer employment, will be invited to the campus to interview students interested in the jobs.

#### Marine Jobs Open

Graduating engineers desirous of filling marine engineer vacancies should apply to the United States Maritime Commission at Washington, D. C. before May 10. Job opportunities are classified as shop operation and ship design. A national competitive examination will be held early in June for qualified applicants. Appointments will be made as engineer cadets in the merchant marine. After three month's service, the cadet may take an examination for Third Assistant Engineer. After obtaining this license the engineer may be appointed as a cadet officer.

### Dr. Harry Heads Iota Sigma Pi

Dr. Harriet M. Harry was re-elected Iota Sigma Pi president following a dinner given for Dr. Evelyn Laing McBain, Iota Sigma Pi national president at the Fenway Inn at 6:45 p. m. Friday. Other officers elected were vice-president, Mrs. Sara McGrew; secretary, Emily T. Wolff, graduate; and treasurer, Josephine H. Beljan '42.

Dr. McBain, of Stanford University, outlined the work done in soap research and the study of the virus of infantile paralysis by women there.

### Varsity Debaters Meet Three Teams On Ohio Trip

Lois E. Notovitz '42 and Sara M. Bailey '43, will uphold the affirmative side of the proposition, "Resolved, that the nations of the western hemisphere should enter into a permanent union" against four colleges within the next two weeks.

They will meet Mt. Mercy women in Bentleyville, next Monday; debate against Ohio Wesleyan women on their campus on Thursday, April 17; and argue with Heidelberg University men the next day.

### Women In Sports

Chi O's defeated DG's, 40-21, in a hard-fought basketball match in White Hall Saturday morning to cop the fraternity league championship and clinch the intramural cup. They will meet Ath East, independent league winner, today to decide the basketball title.

Dotty Radcliffe '42, led the scoring with 12 points, and Pat Patton '42 was next with 10. Sally Faber '41 scored 6 for DG's. Half-time score was 20-18, Chi O's favor.

<b>Chi Omega</b>	<b>Delta Gamma</b>
Dot Pearce, f	Sally Faber, f
Pat Patton, f	Jan Hartz, f
Dot Radcliffe, f	Jo Werner, f
Fran Angle, g	Anne Borton, g
B. Maurer, g	H. Harwick, g
Dot Wagner, g	Kay Loesch, g

June Steinfurth '41 was crowned champion coed bowler last week with a 313 score in a two-game match. Next four ranking contestants included Kay Tussey '41, 311; Martha Duffman '43, 285; Dot Pearce '41, 280; and Betty Widger '41, 255.

Pledges of Alpha Chi Omega were entertained at tea by Miss A Pauline Locklin, assistant professor of English literature, at her home from 3:30 to 5 p.m. Sunday.

### Honorary Needs Names

No suggestions have been turned in to Student Union in the Alpha Lambda Delta contest which closes April 20. \$2.50 will be given to the person supplying the best name for the "Information, Please" program sponsored by the scholastic honorary.

Alpha Epsilon Phi pledges will entertain at tea two representatives from each sorority pledge group in Grange Playroom at 4 p.m. today.

### RIDES Wanted and Offered

R.W. Phila. (4) L—Thursday, 8 a.m. C—Mrs. Russell, 3237.  
R.W. Wash., D.C. L—after 10 a.m. Wed. C—Norcross, 662.

**RADIO THIS WEEK**  
Fred Waring, Mon.-Fri. 7:00 P. M.—NBC  
Glenn Miller, Tues., Wed. Thurs.—10:00 P. M.—CBS  
Professor Quiz, Tues. 9:30 P. M.—CBS

**Eugene H. Lederer**  
**REAL ESTATE**  
114 E. Beaver Ave.  
State College DIAL 4066

### CAMPUS CALENDAR

#### TODAY

Pledging of Alpha Lambda Delta, Southwest Lounge of Atherton, 5 p.m. Pledges wear white.

All students and faculty members interested in fishing report to 316 Sparks at 7 p.m. Subject, fishing equipment.

Phi Mu Alpha, honorary music society, smoker for prospective pledges, Delta Sigma Phi, 8 p.m.

Collegian Senior Editorial Men meet Room 312 Old Main, 4 p.m. today.

#### MISCELLANEOUS

Anna Kaskas concert has been postponed from Thursday, April 17, to Monday, April 21.

#### TUESDAY

CAA party. All those interested call Anderson, AGR house, or see present CAA members.

#### WEDNESDAY

Intramural spring sports entries due before noon in Room 213 Rec Hall with fees and physical exam cards.

The merchant will thus be able to buy in larger quantities, hence more cheaply. And his price will have to be "right." Another point of saving would be in correlating buying with periods of lowest prices. Also, if buying is worked out scientifically, the prevalent factor of over-buying by fraternities would be eliminated.

Such a plan, according to one estimate, would be available to the fraternities of Penn State for \$10 a month for each participating fraternity. Advocates of this plan feel that it would lower food bills enough to check that extra expense of "going fraternity."

### CLASSIFIED SECTION

**TYPEWRITERS**—All makes expertly repaired. Portable and office machines for sale or rent. Dial 2342. Harry F. Mann, 127 W. Beaver avenue. Lyr-CRE-ch

**FRANK McCORMICK**  
star first baseman  
Cincinnati Reds.

LOOK AROUND YOU AT THE BALL-PARK

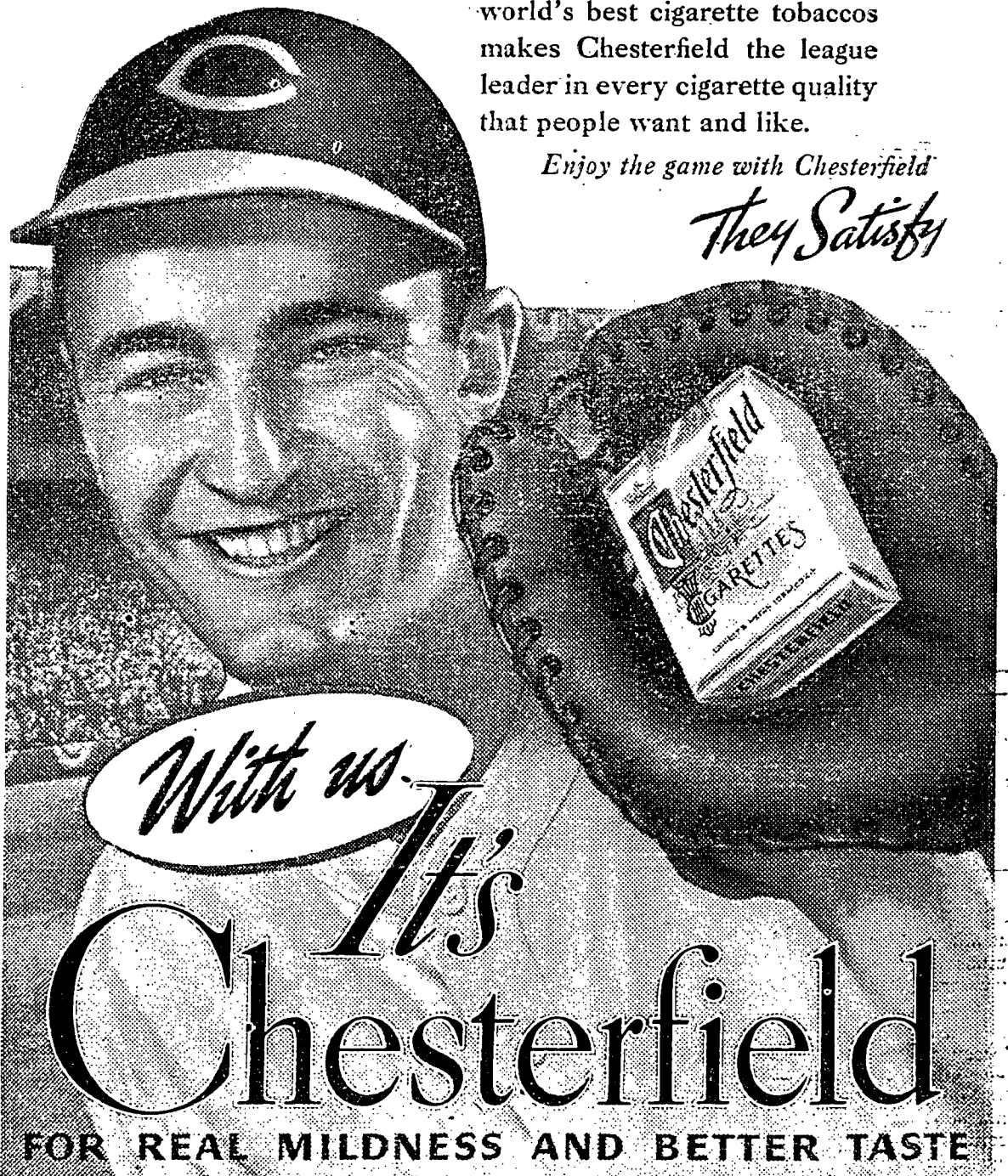
...you'll see the clean white  
**Chesterfield pack**  
on every side

Every smoker who enjoys a Cooler  
smoke that's definitely *Milder* and *Better-Tasting* is a Chesterfield fan.

The can't-be-copied blend of the  
world's best cigarette tobaccos  
makes Chesterfield the league  
leader in every cigarette quality  
that people want and like.

Enjoy the game with Chesterfield

*They Satisfy*



**Nitty**  
Shows at 6:30, 8:30  
Matinee Saturday Only at 1:30

**TODAY - TUESDAY**

NOTE: Special Matinee  
TODAY ONLY

**"PHILADELPHIA  
STORY"**

—starring—  
CARY GRANT  
JAMES STEWART  
KATHERINE HEPBURN

**... TWO DAYS ...**

and you will be going home for your Easter vacation. Now is the time to start thinking about your **CLASS RING**. A class ring is something you will always value. It may be mounted with Fraternity crest or letters if desired.

So remember when you go home this vacation, first thing on the list is to talk with you mother and dad about ordering your **CLASS RING** as soon as you come back.

**ORDER YOUR CLASS RING**  
AT THE  
**L. G. BALFOUR CO. BRANCH OFFICE**  
LOCATED IN CHARLES FELLOW SHOP—109 S. ALLEN ST.