

HE Seniors Visit 26 Phila. Firms

Seniors majoring in institutional administration will visit 26 Philadelphia food and equipment establishments during the home economics field trip, April 2-9.

Included in Wednesday's and Thursday's survey were a school cafeteria, Cladds-Equipment, Holland Restaurant, Horn and Hardart Commissary, Reading Terminal Market, and Abbotts Dairy.

Today they will inspect Penn Terminal, Auction, and Cold Storage Markets, Pure Food, Customs Building, and Bookbinders, and Saturday, the American Store Home Service Bureau, La Touraine Coffee, and Colonnade Cafeteria.

Monday's tour will include Campbell Soup, Van Scriver Furniture, and the Russian Inn; Tuesday will cover Abbotts Ice Cream Plant, Penn Mutual Life Insurance Company, Prudential Life Insurance Company, Curtis Publishing Company, and the Country Gentleman Kitchen.

An examination of Hospital Residence Halls, Wanamaker Department Store and the Interstate Dairy Council will conclude the field trip.

Noted Scientist— Iota Sigma Pi President Visits Local Chapter

Dr. Evelyn Laing McBain, national president of Iota Sigma Pi and outstanding research worker with soap solutions, will visit the Palladium chapter on campus today.

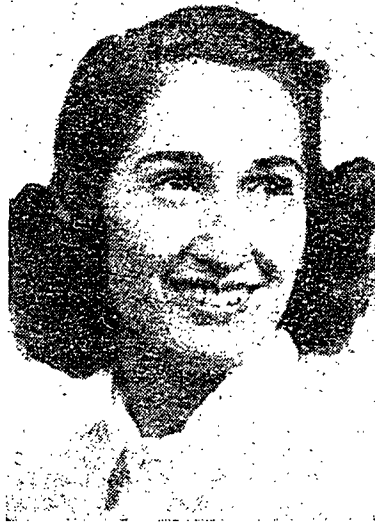
Dr. McBain from Stanford University in California received the Ellen H. Richards prize in 1924, and formerly served as research fellow for the British government and later research associate.

Because of Dr. McBain's notable work and interest in the constitution and electrical properties of soap solutions, structure of jellies, and colloids she will be shown through the biophysical chemistry and biocolloid laboratories of Frear Laboratory this afternoon.

Palladium chapter will entertain Dr. McBain at the Fenway Tea Room at 6:45 o'clock tonight. Dr. McBain is visiting various chapters on her way to the American Chemistry Society meeting in St. Louis, Mo., April 7-11.

Mrs. Frobes' dormitory is holding an informal dance tonight.

Praises Cooperation



Harriet Singer '41, Panhellenic Council president, commends this year's increased cooperation with Interfraternity Council and hopes for its continuance.

Beta Sigs Take Bridge Tourney

Beta Sigma Rho defeated Kappa Kappa Gamma by 1560 points last night to win the All-College bridge championship in the tournament sponsored by IFC and Panhellenic Council.

For the first time in the history of the two organizations a joint tournament was held this year as an added factor in sorority-fraternity relationship.

"Both groups have shown a definite spirit of cooperation this year," expressed Harriet Singer '41, Panhellenic president, "and we hope it will continue."

Sixty-three fraternity teams played off among one another in 9 sections at the Nittany Lion Inn and 7 sorority combinations were eliminated to 2 in White Hall matches. Two winners from each men's section and two top sorority groups met separately in semifinals to determine fraternity and sorority champions.

Cups were awarded the respective men's and women's winners. Margaret M. Diener '42, Delta Gamma, and Robert L. Elmore '41, Delta Sigma Phi, were co-chairmen of the tournament supervised by Clyde H. Graves, assistant professor of mathematics.

Attending the Province Convention of Delta Gamma last weekend at Baltimore, Md., Margaret Diener '42 and Jeanne Clark '41 represented the Penn State chapter of the national fraternity.

Beta Theta Pi and Phi Gamma Delta were the first fraternities established at Penn State.

Women In Sports

Marge Chambers and Jan Hartz emerged champions from the All-College badminton matches in White Hall yesterday. Marge took over Mig Taylor, 6-11, 7-11; and Jan defeated Josephine Werner, 5-11, 3-11.

Marge Chambers and Jean Wisinger snatched the single elimination badminton contest championships which were played off in double groups. Other participants were Mary Hammond, LaRue Baney, Naomi Billen, Muriel Taylor, June Steinfurth, Virginia Reilly, Helen Hancher, Doris Glahn, Dolores Wargo, Micky Rizza, and Ruth Stamm.

June Steinfurth was victor in the final All-College bowling tourney, with a score of 313. Five highest scores in the bowling contest will be entered in the American Tenpin Telegraphic Match. The five high scorers were Kay Tussey, 311; Martha Duffman, 285; Dot Pierce, 280; and Betty Widger, 255.

Honorary Wins Contest

First prize of \$3 went to Alpha Lambda Delta, women's scholastic honorary, in a song contest sponsored by their national office recently. Jean Babcock '42 wrote the words of the winning song to the tune of "Londonderry Air."

Alpha Chis Elect

Alpha Chi Omega elected Dorothy J. Johnson '42, president; Patricia MacKinney '43, vice president; Janes G. Gottschall '44, secretary; and Emily L. Funk '43, treasurer.

TPA Initiates Six Coeds

Theta Phi Alpha initiated the following women at their house at 4 p.m. Sunday: Dorothy H. Teresinski '42, Mary J. Chollak '43, Teresa C. Marusak '43, Mary M. Sheehe '43, Irene E. Panucci '44, and Margaret L. Maginnis '44. A supper followed the initiation.

Olive B. VanHouten '44, whose first semester average was 2.55, was bid by Alpha Lambda Delta Saturday to make a total of 23 freshman bids.

TOILETRIES
HEADQUARTERS
For
STATE COLLEGE



We carry a complete up to the minute stock of the latest creations of the foremost manufacturers of toiletries. Miss Marguerite McFadden of the House of Elmo will be in Our Store Until Saturday

REA & DERICK, INC.

Allen St.

Next To Bank Clock

Welcome Back To Penn State,
Alumni And Guests



from
NU GAMMA
of

Chi Omega

The
ALPHA EPSILON

CHAPTER

of

A O Pi

WELCOMES YOU

—to—

PENN STATE

A
L
P
H
A
C
H
I
O
M
E
G
A

BETA MU
CHAPTER
—of—

Welcomes
—all—
Alums and Guests
—to—
PENN STATE

ALPHA ZETA

of

Alpha Epsilon Phi

Here's To A Swell
Interfraternity Ball Weekend
And A Cordial Welcome
To All Of Our Alumnae