

Sororities Guarantee No Organized Rushing For First Semester

WRA Plans Day Of Co-Recreation

September 29 is the co-rec' day for co-recreation!

With plans for an archery tournament, bicycle breakfast hike, fencing, golf, tennis, and volleyball tournaments, the Women's Recreation Association will sponsor its first Co-Recreation Day designed to stimulate combined recreational activities.

A man or woman may participate in only one activity and must designate his choice at Student Union by noon Friday, September 27.

The bicycle breakfast hike to the WRA Cabin will begin at White Hall at 7 a.m. and return by 10 a.m. A 50-cent charge will be made for bicycles and 25 cents for food.

Other activities are slated for 2 to 4 p.m. The Archery Club will conduct a mixed Columbia Round on Holmes Field; the Fencing Club, a tournament in White Hall; the Golf Club, mixed two-ball foursomes on the College links; the Tennis Club, a mixed doubles progressive tournament on Rec Hall courts, and the Variety Club, a volleyball tournament on Holmes Field.

Mary G. Procter '41, chairman, has appointed Janet L. Fleming '42, in charge of golf; Anita M. Knecht '42, bicycles; Elizabeth C. Rose '42, food; and Josephine J. Taggart '41, tennis.

Refreshments will be served at White Hall at 4 p.m.

Women Will Observe Pop-in Night Sunday

With all the dainties from chocolate cake to apple cider, freshman women will play hostesses to upperclasswomen from 8:30 to 9:30 p. m. Sunday in observance of traditional Pop-in Night.

Freshmen in McAllister Hall, Women's Building, Grange playroom, and the eight downtown dormitories, as well as transfers and town women, will wait in their rooms for upperclasswomen to drop in for a chat and a snack.

The following Sunday night the procedure will be reversed and freshmen will pay return engagements to Atherton Hall, Grange, and sorority houses.

We, The Women— Helpful Suggestions For Pop-In Night

POP-IN NIGHT has always been an ivy-clad custom with Penn State women. This tradition, which was established to further friendly relations among coeds, will again be observed Sunday night when upperclasswomen visit freshman coeds in their rooms.

Traditionally this evening of making acquaintances with campus newcomers has been abused. It has been turned into an opportunity for pre-season rushing by sorority women who are anxious to get out leadpipes and camp in freshman rooms.

For a really successful Pop-In Night we suggest that upperclasswomen wear name cards and visit downtown dorms as well as Mac Hall and Women's Building. Town freshman houses are Locust Lane Lodge at 312 Locust Lane, Anchorage at Beaver and Atherton Avenues, and McCormick at 225 S. Allen Street. Freshman coeds are also located in the following dorms: Mrs. Beman, 236 S. Frazier St.; Mrs. Bart, 222 W. College Ave.; Mrs. Forbes, 129 S. Miles St.; Nittany Co-op, 244 E. Nittany Ave.; and Student Co-op, 425 S. Allen St. The two transfer dormitories are: Wiley, 134 E. Foster Ave.; and Parker, 228 S. Allen St. And don't forget the three freshmen in Grange playroom and the town students.

Non-sorority women as well as sorority affiliates should do their part Sunday night. All upperclasswomen should visit as many rooms as possible.

Alpha Lambda Delta Pledges 7 Sophomores

Alpha Lambda Delta, freshman women's scholastic honorary, will pledge seven women who made an average of at least 2.5 last semester in Atherton Hall at 7 p.m. next Wednesday night. The honorary previously pledged 21 freshman coeds last spring.

New pledges will be Christine R. Grant, Esther M. Hall, Harriet S. Herschfeld, Marjorie J. Kehler, A. Ruth Krimmel, and Dorothy J. Magor.

—BUY COLLEGIAN NOW—

Meeting Last Night Limits Rush Code

Unanimously agreeing that no organized rushing of any kind will be held first semester, sorority rushing chairmen and the executive committee of Panhellenic Council met last night in Atherton Hall to ban high pressure rush methods which were beginning to be evidenced this week.

Violations of this "gentlemen's agreement" among houses will necessitate reversion to last year's code which prohibited free association, the group threatened.

The present code was reinterpreted to provide that no organized chapels (attending in large groups) or downtown "coke" parties will be held until intensive rushing starts next semester. The group restated that until October 9 Panhellenic rules stipulate literally a "free association" which is to be used to further friendly relations among freshmen, transfers, and sorority women.

Agreeing yesterday afternoon that the code had been abused and that rushing had already begun, the executive committee headed by Jean A. Krouser '42, Panhellenic vice president and rushing chairman, called the rushing chairmen together last night.

It was established that after October 9 freshmen can visit upperclass sorority women in dormitory rooms but not in sorority houses, and that from now on freshmen are not obliged to attend chapel when invited.

Further code clarifications will be made in Senior Sponsor meetings which will be held throughout next week.

Three Honoraries Sponsor Mixer

The first in the series of WSGA-sponsored mixers will be given for 175 freshmen in the Armory at 8 p.m. tomorrow night by Mortar Board, senior women's honorary, Cwens, sophomore women's honorary, and Friars, sophomore men's honorary.

Freshman women living on fourth floor Mac Hall have been granted 11 o'clock permissions to attend the mixer but must wear their name cards. However, they may be accompanied by men when returning to the dormitory and need not wear their hair ribbons.

W. Lewis Corbin '41, chairman of Tribunal, announced last night that freshman men attending the affair must retain their customs except that they may escort women home at 11 p.m.

Pan-Hel Issues Second Handbook

To open the door of Greekdom for bewildered freshman women and to lead them safely through the maze of rushing regulations, Panhellenic Council has again issued its Handbook, edited by Arita L. Hefferan '41.

Full of helpful suggestions on conduct, dress, and proper etiquette, the booklet is designed to simplify rushing for freshmen as well as to present an accurate picture of sorority life.

The Panhellenic Rushing Code is set down and its confusing sections explained. Special emphasis is put on the Panhellenic tea, Stunt Night, and Open Houses to which all freshmen are expected to come without invitations.

Explanation of bidding, formal and informal parties, silent periods, free association, and terms peculiar to sororities is given as well as detailed expenses of individual houses.

All sorority members are listed alphabetically and the last page is devoted to names of officers and representatives of Panhellenic Council.

Freshman Coeds To Nominate Hall Officers

Nominations for freshman women's hall offices are scheduled for Monday night, when each group will elect a president who will automatically sit on WSGA Freshman Council, a vice-president, and a secretary-treasurer.

Qualifications for officers include scholarship, leadership, and res-

ponsibility. Elections will be September 30.

Freshman Council, composed entirely of freshman coeds and presided over by Margaret K. Sherman, Sophomore Senator, discusses matters pertaining particularly to freshman women. Each dormitory also elects a president, vice-president, and secretary-treasurer to work with the entire group.

—BUY COLLEGIAN NOW—

WISE STUDENTS
ARE
RUSHING
TO
KEELER'S
FOR THEIR
TEXT BOOKS
—and—
STUDENT SUPPLIES



BEFORE YOU TAKE THE PLUNGE... READ

"How to Choose a Slide Rule"

by DON HEROLD

Choosing a "Slide Rule" is a lot like getting married, because you are going to have it for a long, long time. That's why you just must read this masterful book by that old slide rule slider, Don Herold. It is written in simple, salty language and profusely illustrated by the master himself. It takes the mystery out of slide rules for all time.

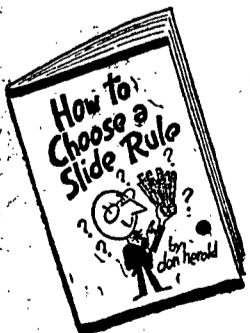
"How to Choose a Slide Rule" is free—if you get yours before the first edition runs out. See your campus K & E dealer at once.

EST. 1867

KEUFFEL & ESSER CO.

NEW YORK - HOBOKEN, N. J.

CHICAGO - ST. LOUIS
SAN FRANCISCO - LOS ANGELES - DETROIT - MONTREAL

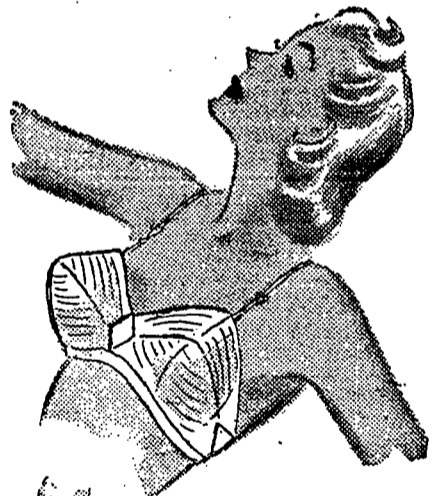


IT'S HUMOROUS...

IT'S HELPFUL...

IT'S FREE

Uplift that fits like your skin!



\$1.50
and
\$2.50

NEW FULL-FASHIONED

VASSARETTE BRASSIERES

No wrinkles, no sagging, no binding in these marvelous new Vassarette Brassieres. They're full fashioned like your stockings to fit the shape as well as the size of your bosom. They give you firm support and artful contouring in the softest, lightest of fabrics. They keep their lift... their perfect fit... through dozens of sudings, and never need ironing. Fashioned of lastex, lisle, rayon.

PATERSON HOSIERY SHOP

136 E. College Avenue

State College