

**HANN'S WATCH SHOP**  
Watch and Jewelry Repairing • Watch Attachments  
Located in Hoy Drug Store East College Ave.

WELCOME, CLASS OF '43  
**GEO. L. SMITH'S**  
POWDER PUFF BARBER  
and BEAUTY SHOPPE  
107 Allen Street Dial 2201 State College

**DO-NUTS**  
RAISED SUGARED PLAIN CHOCOLATE COATED COCONUT COATED FRESH POTATO CHIPS  
"Watch Them Being Made"  
**H. & W. DO-NUT SHOP**  
117 S. PUGH ST DIAL 4162

**THE TOWN SHOP**  
"Exclusive outfitters for  
The Well Dressed College Man"  
127 S. ALLEN ST.

**IT'S HERE!**  
Watch for the Opening of  
**EATLAND**  
State College's Newest Restaurant  
125 CAPACITY  
Hotel Quality Food • Popular Prices  
**ICE CREAM will be given away FREE**  
to our patrons on **OPENING DAY!**  
Meal Tickets: \$5.50 for \$5.00  
**EATLAND**  
ON ALLEN STREET

FOLLOW THE CROWDS  
TO  
**McLANAHAN'S**  
— for —  
Drugs Food Cameras Prescriptions Lending Library Photo Finishing  
Central Pennsylvania's Most Modern Drug Store.  
COMPLETE IN ALL DEPARTMENTS  
**McLANAHAN'S**  
ON ALLEN STREET

# WOMEN'S NEWS

## Women's Customs—Green Ribbons

### WE WOMEN

By HELEN L. CAMP  
Women's Editor

ONCE AGAIN the women of Penn State unite to welcome a new group of freshmen. Here you are, coeds of the class of 1943, some three hundred of you—all with that wide-eyed exclamation mark stamped on your faces. Ah, it's good to see you.

It's good to see your enthusiasm, your interest, and your ambition. You've all come to conquer the campus, in one way or another, and some of you will succeed.

You will succeed, that is, if you go about it right. If you set out to see things clearly and to judge them fairly. If you name yourselves a goal and work for it without being sidetracked by superficial things.

And you will meet a lot of things and people who will do their best to sidetrack you. Social life is a necessary part of your college, but it is not the primary purpose.

Sororities are also a phase of college life, for those who want them and can afford them, but college is still college without a sorority. And, while the collegiate slang expressions and mannerisms that you can easily pick up may dazzle the homerolks on your vacations, they only amuse the upper-classmen.

You may have heard tales about Penn State coeds. You may have heard stories of drinking, smoking, and house parties. And to some people, a Penn State coed means just those things.

The question before you is: Do you want people to think of you and your college in those terms?

For, strange as it may seem, what people will think of Penn State coeds from now on is up to you. You represent a transfusion of new blood into the coed population. Just what that transfusion will bring, whether new strength or merely decay, depends on you. It is in your power to bring with you your ideals and make them part of the standards of the College. Or you can mold yourself into just another Penn State coed indistinguishable from twelve hundred others.

But, no matter what you choose to do with your college career, for the next year you are freshmen, under our guidance, protection, and possible influence. And so we welcome you and wish you the best in Penn State.

And any advice we could give you would be only this: Don't do as we did, but do as we wish we had done.

### Women's Recreation Is Centered In The WRA

Beginning with Freshman Week and continuing until school ends in the spring, women's sports events and competitions will be guided and directed by the Women's Recreation Association. These intramural sports offer opportunities for all women to participate.

W. R. A. (as it is called) is headed by an executive board, composed of Mary O'Connor '40, president, Mary Ann Rhodes '40, vice president and social chairman, Jane R. Hoskins '41, secretary and cabin manager, Marjory A. Hawwick '41, treasurer and intramural chairman, L. Eleanor Benfer '41, chairman of club presidents, and Helen A. Woodcock '42, publicity chairman.

The club presidents board includes L. Eleanor Benfer '41, chairman; Ruth J. Shtusel '41, dance; Betty M. Strayer '40, tennis; Janet L. Fleming '42, golf; Margaret M. Diener '42, riding; Helen F. Driver '42, archery; Louise B. Clark '41, swimming; L. Grace Nolt '40, rifle; Catherine E. Bender '41, outfit; Helen L. Mazur '42, fencing; and Jeanne M. Chew '41, variety.

The Intramural Board is headed by Miss Hawwick, chairman, and Audrey Dice, assistant, and is composed of representatives from each house appointed by the house with recommendations by the W. R. A. executive board.

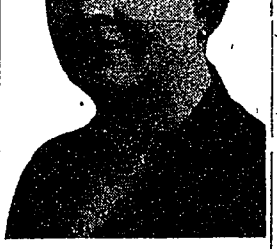
Class sports are under the supervision of the chairman, her assistant, and the four class managers, one from the senior class,

### Frosh Girls Must Wear Namecards; Regulations Begin Sept. 20, 1:10 P.M.

Green ribbons—every bit of three-quarters of a yard long and four inches wide—will be knotted in the hair of freshman women as customs regulations go into effect with the beginning of the first semester at 1:10 o'clock Wednesday afternoon, September 20.

Besides the ribbons, freshman women will be required to wear regulation namecards, five inches by three inches, with their names printed legibly in heavy black letters one inch high, and must be worn until Thanksgiving vacation. Paralleling men's regulations, women will be prohibited to walk on the campus grass, except on Holmes Field.

### DEAN OF WOMEN



MISS CHARLOTTE E. RAY

### Clothes? Here Is Advice On Some 'Musts'

By PAT BRAUN

All over the country you freshmen are jamming into College Shops, overworking Mamma's checkbook, getting clothes-drunk, him full of bright hopes for the coming year.

But what are you buying? Clothes? Reams of them, picked out for you by college representatives from every part of the country, from women's schools, universities, small colleges, and denominational schools.

What do you need? Yes, you need everything, or think you need everything. But when Dad's bank account isn't very big, and most of his money has to be spent for your fees and books, you have to substitute "What I can get by for" for "What do I need?"

1 Good coat—fur or cloth trimmed with fur

1 reversible coat, or a polo coat and something for rainy weather

1 evening wrap, preferably black velvet (if you have a fur coat, you can sling it over your evening gown and skip the wrap)

1 formal evening gown, and 1 semi-formal or dinner dress

2 plain silk or wool dresses for dates

2 short pleated wool skirts

1 or 2 wool tailored jackets to harmonize with your skirts (Corduroy or velvet make good alternatives for wool)

2 or 3 sweaters and the same number of shirts to match or harmonize with your skirts and jackets

Plenty of socks and a few pairs of sheer silk hose (You'll need the hose for chapel and weekend dates; for campus you'll wear socks, either ankle or knee-length)

1 pair of crepe sole, saddle, or wooden shoes

1 pair of spectator or other dress pumps (If you get spectator pumps, you can wear them with a good dress or a sweater and skirt and be equally well-dressed)

1 classic hat (The new pork-pie Continued On Page 9)

**R. F. STEIN MOTOR CO.**  
Sales OLDSMOBILE Service  
Gulf Gas and Oil  
Reasonable Storage Rates  
DIAL 3451 121 S. BURROWS ST.

**WE'VE MOVED**  
We're Now At  
131 WEST BEAVER AVENUE  
**McKEE'S MARKET**  
"IF IT GROWS, WE HAVE IT"

WELCOME '43  
To the campus and to this community which is served by a modern sanitary laundry  
COME IN AND MEET-US  
**PENN STATE LAUNDRY**  
320 W BEAVER AVENUE DIAL 3261

Student Table and Floor Lamps  
Other Electrical Appliances  
Moderately Priced  
**W. H. MARSHALL**  
GLENNLAND BUILDING

**O'BRYAN'S**  
SUPER SERVICE  
South Atherton Street  
• LUBRICATION  
• AUTO ACCESSORIES  
• REPAIRING  
• LUNCH

**WELCOME FROSH!**  
Pay us an early visit eating habits will be an important part of your college life!  
24-ounce milk shake Rich and Creamy 10c Try our famous "TUBBER" 10c  
In addition to a complete fountain service, we feature regular meals at lowest prices.  
When you think of food, think of the—  
**DAIRY BAR**  
145 ALLEN STREET  
WALTER NEILLY '14, Prop.  
Los Angeles City College has a course to train peace officers

**THE MUSIC ROOM**

The Only Music Store in State College  
RECORDS: Brunswick, Bluebird, Decca, Columbia, Victor  
RADIO: Emerson, RCA Victor, Philco  
ALL MUSIC SUPPLIES  
Why not purchase your radio here where we give 90 days FREE Service. Ask about our Budget Plan for students.  
East Beaver Avenue Glennland Building

**THE MUSIC ROOM**

Welcome Class of 1943!  
Get off to the Right Start

On the way to State — Stop at  
**AMITY HALL**

WHERE PENN STATE STUDENTS MEET AND EAT