

**Nittany**  
Shows at 6:30, 8:30  
Complete show as late as 9:05  
Matinee Saturday Only - 1:30

**TODAY ONLY**  
By Request  
"Prison Without Bars"  
with Corrine Luchaire - Edna Best

**SATURDAY ONLY**  
"Trouble in Sundown"  
with GEORGE O'BRIEN  
ROSALIND KEITH  
RAY WHITLEY

**MONDAY ONLY**  
CHARLES LANGHTON  
"The Beachcomber"  
with Elsa Lanchester  
ADDED  
Walt Disney's  
"FERDINAND THE BULL"

**Cathann**  
Shows at 1:30, 3:00, 6:30, 8:30  
Complete show as late as 9:05

**LAST TIMES TODAY**  
The heart songs and hits, songs of today and yesterday open the gates of memory!  
Alice Faye  
Tyrone Power - Al Jolson  
"Rose of Washington Square"

**SATURDAY ONLY**  
IT'S A Winner  
FOR LAUGHS  
When Miss Dees  
wins the "Dance Queen"  
at her domestic trial!  
"WEEKEND WINNER"  
MARIE WILSON  
ALICE FAYE  
TAYLOR DAVIS  
CHERRY COE

**MON. - TUES. - WED.**  
He liked romance now and then  
she wanted marriage then  
and now!  
CLAUDETTE COLBERT  
JAMES STEWART  
"It's a Wonderful World"  
ADDED  
A Walt Disney Cartoon  
"THE UGLY DUCKLING"

**State**  
Shows at 1:30, 3:00, 6:30, 8:30  
Complete show as late as 9:05

**LAST TIMES TODAY**  
Some like a slow rhumba  
some like a graceful waltz,  
some like a snappy fox trot,  
—BUT DON'T FORGET—  
"Some Like It Hot"  
with Bob Hope - Shirley Ross  
Gene Krupa and his Orchestra

**SATURDAY ONLY**  
TOUGHER THAN EVER... BUT ON THE SIDE OF THE LAW!  
"THE LITTLE TOUGH GUYS"  
HARRY CAREY  
FRANNIE THOMAS  
"CODE OF THE STREETS"  
JAMES MCCALLION  
JUANITA QUIGLEY

**MON. - TUES. - WED.**  
"MAN OF DESTINY" Sam Houston, empire builder. He sacrificed love. He gave his whole life to add a bright new star to the blue field of "Old Glory"  
"Man of Conquest"  
with RICHARD DIX  
GAIL PATRICK  
EDWARD ELLIS  
JOAN FONTAINE

# Panhellenic Council Approves Revised Rushing Code

## Library Prize Won By Zern, Tompkins

Prizes of \$25 worth of new books for owning the best personal collection have been awarded to Gordon K Zern '40 and Cynthia D Tompkins '40 in the fourth Student's Own Library contest conducted by the College Library.

Zern's collection is on display in Keeler's Book Store and Miss Tompkins' in the Athletic Store. Prizes were donated by these stores.

A similar contest will be conducted next fall, Willard P Lewis, librarian, announced yesterday.

## Honorary Chooses Zumbro New Head

Frank Zumbro, Jr., '40 of the department of journalism has been elected president of the local chapter of Sigma Delta Chi, national journalism fraternity. Other new officers are Herbert Nipson '40, vice president, Emanuel Roth '40, secretary, and Paul S Haldeiman '40, treasurer.

Robert L Wilson '40 will be the delegate to the national convention to be held at Palo Alto, California.

Bald professors at Wake Forest College have formed an organization to campaign for a reduction in the prices of their halt cuts.

## Adds Pledge Definition To Altered Constitution

### Natural Association Stressed Again With Open Houses, Get-Togethers Characterizing Code

Panhellenic Council's rushing code for next year was released yesterday by Juanita M Chambers '40, Panhellenic president. The new code is basically the same as this year's with revisions suggested by sororities through their Panhellenic representatives.

As defined by Panhellenic Council, any woman is a pledge on the campus from the time she is notified from Dean Ray's office that she has been accepted by the house for which she has signed a preference sheet. During open rushing for freshmen or upperclassmen, a pledge begins when the woman accepts a bid.

A pledge expires at the end of one calendar year, and a woman cannot join another sorority until that time is up. However, she or the house to which she is affiliated may desire to break the bond and in that case, she may not pledge another house until one calendar year from the day on which her first pledge was released or broken.

#### First Semester Rulings

- 1 A party will be given by the Panhellenic Association on the second Friday evening of the freshmen three-week non-dating period.
- 2 All sorority women, transfers and freshmen are invited.
- 3 Sorority women are asked not to wear their sorority pins to this affair.
- 4 A skit will be presented by the members of Panhellenic Association.
- 5 The purpose of this party is to assist in freshmen orientation and to add to the entertainment of the freshmen during the non-dating period.
- 6 There will be no segregation of women into separate sorority groups.

#### Rulings on Open Houses

- 1 Each sorority will have an open house during the fourth week of school on a day and an hour designated by Panhellenic Association.
- 2 During every fourth week thereafter until January 3, each sorority will have an open house.
- 3 Each freshman or transfer will be allowed to remain thirty minutes only in each house. It is the duty of sorority women to see that she stays no longer.
- 4 Absolutely no invitations will be issued to these affairs.
- 5 Expenditures for the open houses shall not exceed \$5.
- 6 An itemized account of all expenditures shall be handed on a regulation sheet to the Panhellenic rushing chairman the day following each open house.

#### Get-together Rules

- 1 Each sorority may have one get-together a week with the exception of the week during which open houses are held.
- 2 Get-togethers will be held on a different day each week from 4 to 5:30 p.m. The day will be designated by Panhellenic.
- 3 Only 10 freshmen and transfers may be present at these informal, unorganized gatherings at the sorority houses.
- 4 Absolutely no money may be spent in any way on the freshmen or transfers at this time.
- 5 These gatherings may not be held in the houses of alumnae or town women.

#### Free Association Regulations

- 1 There shall be limited contact with freshmen and transfers until January 3.
- 2 Sorority women will not be allowed to visit in freshmen or transfer rooms.
- 3 Freshmen and transfers will not be entertained in sorority houses except at the designated times of open houses and get-togethers.
- 4 Freshmen and transfers will not be allowed to visit in sorority women's rooms.
- 5 Sorority women shall not take to or be seen with freshmen or transfers at the movies or at any of the eating places, except dormitories, on or off campus.
- 6 Sorority women may talk to freshmen and transfers just before and after dinner but may not sit with them at meals in the dormitory.
- 7 Absolutely no money shall be spent in any way on freshmen and transfers during the first semester with the exception of open houses.
- 8 Sorority women shall not get dates for freshmen or transfers.
- 9 During the freshmen week, the first three weeks of school, and in January there will be no open houses or get-togethers.
- 10 There shall be a strict silent period during examination week.

#### Second Semester Rulings

- 1 There shall be free contact from Wednesday at noon, the first day of second semester, until the week after the following Thursday at 9 p.m.
- 2 Informal Parties
  - 1 Each house is allowed no more than five parties.
  - 2 The rushing chairman of each house must sign up for the day and hours of each party with the Panhellenic rushing chairman. This will occur at a meeting during January.
  - 3 If any house has a party other than on the day for which it has signed, it will be penalized.
  - 4 Absolutely all invitations must be written. They will be issued through the Panhellenic postoffice.
  - 5 The expenditures for the free contact period must not exceed \$20.
  - 6 An itemized account of all expenditures for each day shall be handed on a regulation sheet to the Panhellenic rushing chairman.

#### Panhellenic Post Office

- 1 All invitations must be distributed through the Panhellenic postoffice.
- 2 The postoffice will be located at a central place on the campus and will be opened at convenient hours.
- 3 Sorority women will bring all invitations to the postoffice.
- 4 Members of Panhellenic Association will deliver the invitations to freshmen and transfers in the dormitories. Town women will be telephoned and asked to call for their invitations at the postoffice.

#### Silent Periods Set

- 1 There will be a silent period on Saturday at 5 p.m. until 12 noon Monday during the week of informal parties.
- 2 There will be absolutely no further communication during this time between sorority women and freshmen.
- 3 There will be a silent period from 9 p.m. Thursday, February 15, until 5 p.m. Saturday, February 17, preceding the formal parties.

#### Silent Period Regulations

- 1 Each house will have two formal dinner parties preceding formal building.
- 2 Invitations to these parties must be in the Panhellenic postoffice no sooner than 9 p.m. Thursday.
- 3 Replies to these invitations must be in the Panhellenic postoffice between 1 and 5 p.m. Friday.
- 4 The rushing chairman of each house will go to the Panhellenic postoffice at 5 p.m. Friday, to receive the replies to her house.
- 5 The first party will extend from 5:30 p.m. to 7 p.m., the second party from 7:30 to 9 p.m.
- 6 A rusher may attend two parties, having designated such on her replies. She may stay at each house no longer than one hour and a half.
- 7 The expenditures for these parties shall not exceed \$30. This shall include expenses of activities, refreshments, and all participants.
- 8 An itemized account of all expenditures will be submitted to the Panhellenic rushing chairman.
- 9 The list of bids from each house must be handed in to the office of the Dean of Women not later than 11 p.m. Saturday.

## Philadelphia Club Honors Harrison, Thompson Today

Rething Bandmaster "Tommy" Thompson and Harry Harrison, chosen as the outstanding senior athletes, will be guests of honor at a Philadelphia Alumni Club banquet on Friday night. The Philadelphia chapter of the Varsity Club will also participate in the function.

Attending the banquet from Penn State will be Dean Carl P. Schott of the School of Physical Education and Athletics, Bob Higgins, football coach, Mandy McAndrews, football assistant, Chick Werner, track coach, Bill Jeffrey, soccer coach, Charley Spindel, wrestling coach, Leo Houck, boxing mentor, Edward K. Hilsman, alumni secretary, and H. Ridge Rife, of the department of public information.

#### day of second semester, until the week after the following Thursday at 9 p.m.

#### B Informal Parties

- 1 Each house is allowed no more than five parties.
- 2 The rushing chairman of each house must sign up for the day and hours of each party with the Panhellenic rushing chairman. This will occur at a meeting during January.
- 3 If any house has a party other than on the day for which it has signed, it will be penalized.
- 4 Absolutely all invitations must be written. They will be issued through the Panhellenic postoffice.
- 5 The expenditures for the free contact period must not exceed \$20.
- 6 An itemized account of all expenditures for each day shall be handed on a regulation sheet to the Panhellenic rushing chairman.

#### Panhellenic Post Office

- 1 All invitations must be distributed through the Panhellenic postoffice.
- 2 The postoffice will be located at a central place on the campus and will be opened at convenient hours.
- 3 Sorority women will bring all invitations to the postoffice.
- 4 Members of Panhellenic Association will deliver the invitations to freshmen and transfers in the dormitories. Town women will be telephoned and asked to call for their invitations at the postoffice.

#### Silent Periods Set

- 1 There will be a silent period on Saturday at 5 p.m. until 12 noon Monday during the week of informal parties.
- 2 There will be absolutely no further communication during this time between sorority women and freshmen.
- 3 There will be a silent period from 9 p.m. Thursday, February 15, until 5 p.m. Saturday, February 17, preceding the formal parties.

#### Silent Period Regulations

- 1 Each house will have two formal dinner parties preceding formal building.
- 2 Invitations to these parties must be in the Panhellenic postoffice no sooner than 9 p.m. Thursday.
- 3 Replies to these invitations must be in the Panhellenic postoffice between 1 and 5 p.m. Friday.
- 4 The rushing chairman of each house will go to the Panhellenic postoffice at 5 p.m. Friday, to receive the replies to her house.
- 5 The first party will extend from 5:30 p.m. to 7 p.m., the second party from 7:30 to 9 p.m.
- 6 A rusher may attend two parties, having designated such on her replies. She may stay at each house no longer than one hour and a half.
- 7 The expenditures for these parties shall not exceed \$30. This shall include expenses of activities, refreshments, and all participants.
- 8 An itemized account of all expenditures will be submitted to the Panhellenic rushing chairman.
- 9 The list of bids from each house must be handed in to the office of the Dean of Women not later than 11 p.m. Saturday.

## ATO, Alpha Chi Sig Take Intramural Mushball Titles

Alpha Tau Omega and Alpha Chi Sigma clinched first place positions in the Fairmount and Penn-Allen Mushball Leagues in games played this week.

ATO sewed up its Fairmount League lead while losing 9-8 to Lambda Chi Alpha. In other games TNE routed AGR, 20-5, and Sigma Pi outslugged Aacacia, 12-5.

Alpha Chi Sig was assured of the Penn-Allen championship when Theta Chi outslugged Phi Sigma Kappa, 16-11, and Delta Theta Sigma won by forfeit from Phi Sigma Delta.

In Campus League games this week Phi Delt beat Phi Gam, 13-3, Sigma Chi outclassed Sigma Nu 8-3, and downed Alpha Zeta, 16-14.

#### Senior Invitations Are Now Available

Senior Invitations, programs and announcements are now on sale at Student Union. It was announced yesterday by co-chairmen Angelo I Conto and Donald W Wright. Students should bring receipts along with them, also.

It was announced that seniors who have not placed orders for their caps and gowns may still do so by seeing co-chairmen Victor E Gentilman and William W Galbreath at Student Union.

Pi took over Sigma Pi, 5-1; and Beta Sigma Eho downed Phi Psi, SOCCER.

Tied for the lead in intramural soccer competition with two victories apiece are Kappa Sig, Phi Kappa, and Forestry Society.

#### Results of college tennis matches to date show

B R B Club 4 defeated Watts Hall 6-2, Sigma Pi 4 defeated Phi Delt 4, 7-5, 6-2, 8-6, Watts Hall 5 defeated Fianat Hall 6, 6-1, 7-5, Delta Chi 3 won by default from Watts Hall 3, Phi Kappa Sig 3 won by default from Alpha Zeta 3, Fianat Hall 7 downed B R B Club 5, 6-1, 6-1, Alpha Chi Rho 2 edged Watts Hall 2, 7-5, 8-6, Lon's Club won by default from Delta Chi 2, Delta Chi 1 took Lon's Club 1, 6-4, 4-6, 6-4, Phi Kappa Sig 1 measured Kappa Sig 1, 6-4, 6-3, Beta Sig won by default from Alpha Zeta 1, Watts Hall defeated B R B Club 4, 6-2, 6-2, and Sigma Pi 4 beat Phi Delt 4, 7-5 8-6, 6-8.

#### In intramural golf matches to date, DU beat Phi Kappa Sig, 4 1/2-1 1/2, Phi Gam measured Delta Sig, 6-0; Delta Chi blanked Hannas, 6-0; Phi Sigma Delt beat DU, 4-2; Phi Delt trimmed Phi Sigma Delt 5-1, Beta Theta

#### GOLF

In intramural golf matches to date, DU beat Phi Kappa Sig, 4 1/2-1 1/2, Phi Gam measured Delta Sig, 6-0; Delta Chi blanked Hannas, 6-0; Phi Sigma Delt beat DU, 4-2; Phi Delt trimmed Phi Sigma Delt 5-1, Beta Theta

## THE TIME HAS COME...

When all good men must come to the aid of their wardrobes Rally 'round and see the fine new selections of Summer Wear. New colors, new fabrics and new tailoring details... all these (and more) make this Spring NEW and different.

- Suits
- Slacks
- Shoes
- Socks
- Sweaters
- Shirts
- Sport Shirts
- Swim Trunks

**KALIN'S MEN'S SHOP**  
The Home of Hart Schaffner and Marx

## THE FIRST NATIONAL BANK OF STATE COLLEGE

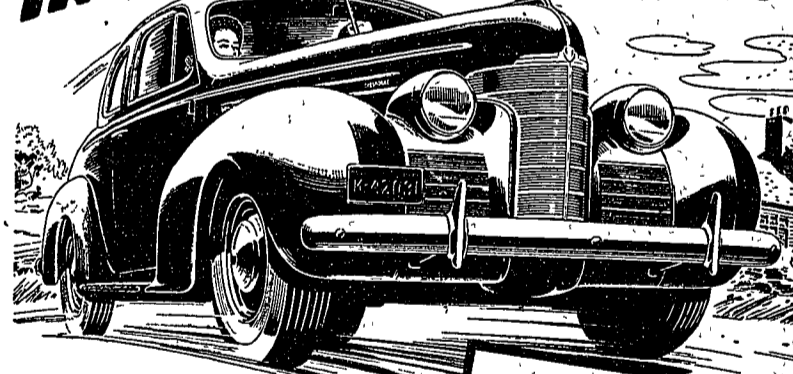
Member of Federal Deposit Insurance Corporation

Approved Penna Private Business School  
**BUSINESS TRAINING**  
BUSINESS ADMINISTRATION  
AND SECRETARIAL SCIENCE  
for young men and women

One, Two and Three Years  
Day and Evening Courses  
8 Weeks Summer Session

Founded 1863  
**PEIRCE SCHOOL**  
Fine St West of Broad Philadelphia, Pa

## OLDS PUTS MORE "GO" INTO GOING PLACES!



**BIG 90 H.P. OLDS "SIXTY" - AN ACE IN ACTION! A MONEY TO HANDLE! AND A RESTFUL RIDER ON ANY ROAD!**

PUT an Olds Sixty through its paces and you'll know you're going places! Olds' 90 H.P. Econo-Master Engine has the power, the pick-up and the stamina to deliver mile after mile of out-front performance—and at real money-savings in gas and oil. Olds' exceptional combination of Dual Center-Control Steering, Handi-Shift and self-energizing Hydraulic Brakes eases the effort and adds to the safety of driving. Olds' exclusive Rhythmic Ride brings new smoothness, new stability, new comfort to Olds' famous Knee-

**- AND TAKES THE "HIGH" OUT OF PRICE!**

**\$777**

AND UP\*

\* Delivered price at Lansing, Mich. includes safety glass, bumpers, bumper guards, spare tire and tube, transportation, state and local taxes, many optional equipment and accessories—extra. General Motors Installation Plan.

Action glide. Why not take a trial drive! Go places once in an Olds and you'll go for an Olds for good!

## OLDSMOBILE THE CAR THAT HAS EVERYTHING

**STEIN MOTOR COMPANY**  
121 South Burrowes Street

**The New 1939 Palm Beach Suit**  
**\$15.50**

*Paul A. Mitter*  
146 South Allen Street

**SAVE AFTER SEVEN**

AND ALL DAY SUNDAY

● That's when most long distance rates are reduced.

THE BELL TELEPHONE COMPANY OF PENNSYLVANIA

**"Wilmer! Speak to me!"**

ONE HOT day last week, poor Wilmer melted completely away—leaving only a small unimposing puddle.

It's a pity—because if he'd been wearing one of the new delightfully cool, Arrow summer shirts, he might still be with us.

As cool as a peach basket, Arrow summer shirts have a two-way non-draft air conditioning system. They have the famous Arrow collar—Mitoga shaped fit—and they're San-forzed Shrink (fabric shrinkage less than 1%), a new shirt if one ever shrinks out of fit.

Burn a path to your Arrow dealer today and pick up a summer's supply of these cool shirts in white or fancy. \$2 up.

**ARROW SHIRTS**

*Paul A. Mitter*  
MEN'S APPAREL  
146 South Allen Street

**ARROW TIES** **ARROW UNDERWEAR**

**ARROW SHIRTS** **ARROW HANDKERCHIEFS**

*Paul A. Mitter*  
MEN'S APPAREL  
146 South Allen Street

**ARROW TIES** **ARROW UNDERWEAR**