

Only Skeletons Now, But 11 New Buildings Symbolize New Era Here

5-Million-Dollar Program Will Make College One Of Greatest In Nation

By EMANUEL-ROTH

They're nothing but skeletons now, 11 metal skeletons. Nevertheless, this rising steel on the campus is a symbol of the new era upon which Penn State has embarked.

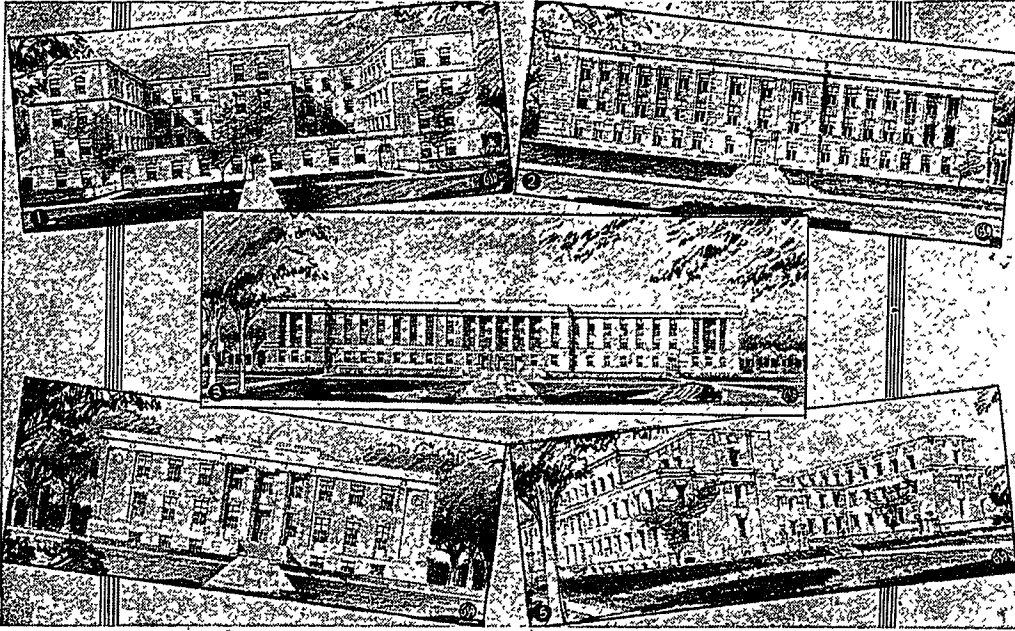
The \$5,000,000 allocated by the General State Authority set spark to the greatest building program in the College's history—a program which will add approximately one-half in value and capacity to the present facilities and which will make the College one of the greatest in the nation.

Returning upperclassmen will be amazed at the changed, quickened tempo in town and on the campus. Everything points to a period of boom. The hundreds of workers are truly moulding a new Penn State.

Although the contract calls for completion of the buildings by June 30, 1939, the construction has been arranged so that the McCloskey Company can vacate the sites by the end of the first semester. In all probability this will be the case.

Buildings and the costs of construction are: Poultry, \$80,000; Service, \$25,000; Liberal Arts, \$460,000; Forestry, \$165,000; Educational, \$260,000; Library, \$450,000; Mineral Industries, \$120,000; Agricultural Science, \$575,000; Electrical Engineering, \$465,000.

5 Of The Buildings Which Will Remake Penn State



Pictured above are five of the buildings now under construction in the College's five-million-dollar program. They are: (1) Mineral Industries, (2) Biological Science, (3) Chemistry and Physics, (4) Agricultural Engineering, (5) Electrical Engineering.

Handful Of Men Tie Up Work; Committee Studies Wage Issue

A comparative handful of men stopped the five-million-dollar building program here for two weeks last month in a dispute over prevailing wage scales.

Approximately a score of cement plasterers of the A. F. of L. plasterers' union walked out and picketed the program when McCloskey & Company, contractors, slashed wages from \$1.25 to \$1 per hour.

The entire program was slated when trucks and other workers refused to break picket lines.

Union Scale In Doubt
McCloskey & Company claimed the men were being paid a higher rate than called for by the union scale. Authorities said the contracting firm decided to cut the wages when it discovered the union scale was.

(Continued on Page 10)

WARNER BROTHERS

CATHAUM AND NITTANY THEATRES

Extend Congratulations and a Welcome to the CLASS OF 1942

If you follow the traditions of the thousands of Penn State students ahead of you many of your pleasant hours and choicest memories will be associated with these popular courses. Cathaum, 1:00, 3:00, 8:30, and Nittany 6:30 and 8:30. Here is the rendezvous of good fellowship, where all the gang gets together, and everybody meets everybody.

- Every Outstanding Production from All the Major Producers.
- Pennsylvania and World Premieres are frequent in State College. You see all the pictures while they are New!
- Outstanding Foreign and Art Films are part of our Regular Policy.
- The Finest and Latest in Sound and Projection.
- The theatres are managed by young college graduates and all ushers are Penn State students.

REMEMBER: The Cathaum and Nittany Theatres are a definite part of the Penn State tradition and college life!

NOTE

ALL PICTURES ENTERED IN THE \$250,000 MOVIE QUIZ CONTEST WILL PLAY AT THESE THEATRES

Chemistry and Physics, \$800,000; Agricultural Engineering \$90,000

Central Liberal Arts

Descriptions of the buildings follow

Central Liberal Arts—A new central fireproof building 166 feet by 62½ feet by 50½ feet. It will be a leaf wing connecting the two existing buildings and will consist of three stories and a basement. Existing wings will be remodeled.

A steel frame building, the structure will be built on reinforced concrete and the floor slabs.

Exterior walls will be of solid brick with limestone trim, tile interior partitions, and steel sash. The building will have a pitch and slag roof, steel stairs, wood floors in the class rooms and terrazzo floors in lobbies and toilets. Walls will be plastered, with acoustical tile ceilings in the larger rooms and steel toilet partitions. Standard plumbing and electrical work will be incorporated. Heating will be supplied from the central College plant.

Remodeling of existing wings will consist of new partitions, painting, conditioning the floors, installing new toilet rooms and parking. Remodeling is estimated to cost about \$25,000.

Library—The new College Library will be located at the north end of a proposed mall above the Liberal Arts and Education Buildings, in a location now occupied by the driveway which runs past the Liberal Arts units. It will be a new fireproof structure of three stories and basement 170 feet by 60.

Footings will be of reinforced concrete, the frame of steel, and having concrete and the floor slabs. Exterior finish will be brick with limestone trim, and features will include bronze or aluminum windows, exterior doors of white pine, and pitch and slag roof.

Much of the radiation in the

(Continued To Page Nine)

STROUSE'S HARNESS SHOP
Luggage Repair
All Kinds of Leather Work
Football Equipment Repaired
Frazier Street
Beneath Lemmon & Granger

Reversal Of Court Ruling Paved Way For Building Funds

Legality Of The General State Authority's Program Clouded For 2 Years By Judicial Decisions

By the magic of a Supreme Court reversal, Penn State College was able to gain the biggest construction program in its history.

With a total of \$5,000,000 allocated to the College last August, the program here also is second only to the state government's seven-million-dollar Finance Building at Harrisburg among the 79 projects comprising the General State Authority's \$65,000,000 state-wide building program.

But the \$5,000,000 came only after the State Authority had inched its way through a maze of legislative and judicial somersaults to become one of the most important financial organs in the state governmental setup.

Created in 1935, the Authority was created as a public corporation and governmental instrumentality by the State Legislature on June 28, 1935, in order to provide means whereby the Commonwealth could avail itself of the Federal Emergency Administration of Public Works (PWA) funds, despite the constitutional interdiction on the state's borrowing capacity.

When the Authority was declared unconstitutional by the State Supreme Court soon afterward, the Legislature voted to place a \$42,000,000 bond issue on the ballot in a statewide referendum to finance the program.

Meanwhile, former Attorney-General Charles J. Margiotti was granted his petition for a rehearing before the court.

Referendum Voted
Doubtful of Court sanction, however, the Legislature voted the referendum proposal a second time, as required by the state constitution.

Then on February 4 last year, after a review of the act, Justice Kephart handed down the Court's opinion reversing its original stand and declaring the "General State Authority Act" and the undertakings in pursuance of it as constitutional.

Two months later—on May 18—the act was amended by the Legislature, clarifying the purpose of the Authority.

"The Authority is created for

the purpose of constructing, improving, maintaining, and operating sewers, sewer systems, and sewage treatment works for the state institutions of every kind and character; public buildings for the use of the Commonwealth, state arsenals, armories, and military reserves, state airports and landing fields, state institutions of every kind and

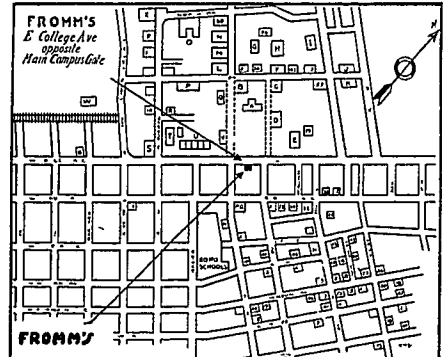
(Continued To Page Nine)

The Finest Man's Store in State College

Welcome Freshmen!

CLASS OF 1942

Get Your Map of State College at Fromm's



- Suits by . . .
- Society Brand
- Worsted-Tex
- Saxon-Weave
- Town Weave
- Campus Togs
- Trimount

DINKS, BLACK TIES, R. O. T. C. SHOES

At Prices You Can Afford

SHOES

For Men

Florsheim

Friendly Five.

Goodrich

Jason Shirts

Shoble Hats

Faultless

Pajamas

Westminster

Hose

Pioneer Belts

SHOES

For Women

Peacock

Vitality

College Bred

fromm's
Opposite Old Main - State College

ALLWAYS AT YOUR SERVICE

You Know Us by the Firms We Represent

CATHAUM THEATRE BUILDING

New - TEXT BOOKS - Used For All College Courses

CATHAUM THEATRE BUILDING

FOUNTAIN PENS
\$1.00 and Up

Agents for Pens of the better known manufacturers.

STATIONERY
COLLEGE SEAL AND PLAIN

Quality Stationery at low prices.

PENCILS ERASERS INKS PENNANTS

DRAWING SETS
Guaranteed sets for all drawing courses—get our price before buying your set.

ART MATERIALS
A complete selection for the master or the beginner in all mediums.

Laundry Cases
If you send your laundry home it will pay you to see our new all fibre cases. They last longer.

LOOSE LEAF NOTE BOOKS

Special prices on All Leather Student Note Books. Be sure to see them.

Rental Library
ALL LATEST FICTION

Low Rental Rates
The books you want to read when you want to read them.

For All College Supplies Trade at **KEELER'S**