

We'll Have Stronger Team But May Not Win As Many—Bob Higgins

Difficult Schedule Faces Lions As 36 Candidates Gird For Grid Campaign

First Practice Session Set For Tuesday; Replacement Sought For Wear; Linemen Also Lacking

"We'll have a stronger football team but one which may not win as many games."

That's the opinion of Coach Bob Higgins as he sums up the chances of the Nittany Lions for the coming campaign. The season will be State's 52nd and will be Higgins' ninth as head coach here.

The football mentor predicted that Cornell, Pittsburgh and Dartmouth would have the leading teams in the East with Fordham not far behind.

Pitt and Cornell will oppose the Lions, with Syracuse, Lafayette, Pennsylvania, Maryland, Bucknell, and Lehigh completing the schedule. The Lions open with Maryland on October 1.

Wear To Be Missed
The Coach conceded that State's chief trouble will be in finding a passer to replace Windy Wear and a field general as inspirational as the 1937 quarterback.

The Lions also will be harassed by lack of reserve linemen. This may be particularly apparent with respect to guards and centers.

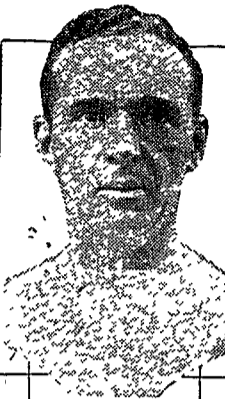
Last year's coaching staff will remain intact with Joe Bedenk as line coach, Earle Edwards as end coach, and Al Michaels as backfield headman.

36 Candidates Called
Thirty-six men have been called for the initial practice which will be held Tuesday. They are: Sid Altes, end, Alex Barantovich, end, Bernie Biggs, center, Bob Crowell, end, Harry Dennis, tackle, Bill Ellwood, tackle, Dick Ewalt, quarterback, Leon Gajechi, center, Vic Gentilman, fullback, Tony Giannantonio, halfback, Dean Hanley, tackle, Harry Harrison, quarterback, Lloyd Ickes, quarterback, Charles Kinnard, halfback, Walter Knaz, tackle, Sam Kopach, halfback, George Lucas, center, Joe Metio, fullback, Wade Mori, guard, Ted Nemeth, guard.

Others are Johnny G Patrick, fullback, Johnny R Patrick, halfback, Joe Pei, guard, Chuck Peter, halfback, Frank Platt, tackle, Gilbert Radcliff, end, Steve Rollins, halfback, George Smith, guard, Carl Staviniski, tackle, Sevei Toietti, center, Giove Washabaugh, end, Ciang White, fullback, Jim Woodward, guard, Ott Wuenschel, quarterback.

Although not officially invited, 11 others are expected to answer the first practice call. They are John Barcelona, guard, Angelo Conte, end, Bill Costanzo, end, Lovd Parsons, end, Tom Snath, guard, Ted Strychalski, halfback, Mike Ciek, guard, Henry Eavis, tackle, Wallace Patton, tackle, Les Cohen, guard, and Joe Ceocca, back.

Football Coach



COACH BOB HIGGINS

Students Here Compete For Managerships

Student athletic managers are elected under a competitive system whereby candidates begin their quest for the managerships in their freshman or sophomore years and gradually advance to positions of greater responsibility. Early in the fall, calls are issued to freshmen by the various sports for "third assistant managers" and those who enter the competition are given routine duties to fulfill.

In this manner, freshmen are given an early opportunity to make early acquaintances with a large number of students.

Second Assistants
After the season has closed, freshmen who have remained in competition become known officially as second assistant managers. They are requested to report next season about a week before practice begins.

During their second years as assistant managers, they perform duties of greater responsibility.

Three Survive
At the end of the second season, three of the surviving group are elected first assistant managers. They are elected by the manager, coach, captain, graduate manager of athletics and the president of the Men's Athletic Association largely through the recommendations of the three outgoing first assistants.

The first assistants usually make a majority of the trips and are placed in charge of most of the arrangements.

They supervise the work of the "seconds" and "thirds."

Manager Elected
At the end of the season, the manager is elected from the three first assistants in practically the same manner as the first assistants were chosen.

The two candidates other than the newly-elected manager become freshman manager and associate manager, respectively, according to the number of votes received.

W.S.G.A. Is Headed By Doris Blakemore

Doris Blakemore '39 is president of Women's Student Government Association, which is entrusted with regulation and direction of all women's activities at the College.

Other officers are Josephine A. Keeney '40, vice-president; Italia A. DeAngelis '39, secretary; Betty L. Mattas '41, treasurer; Marjorie F. Davies '39, senior senator; Peggy E. Jones '40 and Jane A. Romig '40, junior senators; Elmer L. Weaver '41, sophomore senator; and Mary F. Letzler '40, town senator.

New Women's Structures Cater To Sports Lovers

Pool, Bowling Alleys, Rifle Range, Courts Will Be Important Features

Women who enter sports at Penn State this year will find much to interest them in the new Activities Building and the Women's Recreation Association, newly organized by its president, Rachel Bechdel '39.

Tennis Courts Are Placed On Reserve Plan

Only Those With Cards Will Be Allowed To Play; Hour Periods in Effect

With the increasing popularity of tennis on the campus, the School of Physical Education and Athletics has found it necessary to put the tennis courts on a reserved schedule. Only those with a reservation card will be allowed on any of the College courts.

Reservations are made at the office of the Dean of the School of Physical Education and Athletics.

Players may phone their reservations by dialing '711 and asking for the tennis court extension phone. Matriculation cards must be shown before a reservation tag will be issued.

Recreation Hall courts will be numbered 1 to 12, starting with the court nearest to Recreation Hall. Varsity courts will be numbered 13 to 16, starting with the court nearest the fraternity houses, while Pond Lab courts will be numbered 17 and 18, starting with the court nearest the Women's Building.

Costume
1. All players must wear rubber-soled, heelless shoes.
2. All men must wear either a shirt or similar covering.

Rules
1. First consideration is given to organized classes. Reservation is made through a letter to the Dean giving dates and the number of courts needed. Classes need not necessarily follow rule No. 6. If an instructor has a reservation from the Dean covering a group of courts, or if a student has a reservation from an instructor in Physical Education, the 15 minute rule will not be effective.

2. Aside from classes, every College student and instructor has equal claim to courts, first come, first served.

3. Reservations may be made only a day in advance and for only one hour. (The College has too few courts to allow one person to monopolize them for several hours at a time.)

4. No person is required to give up a court except upon presentation of a written reservation signed by the Dean of the School of Physical Education and Athletics or by an instructor in the same school.

5. All reservations must end at the stroke of the hour as sounded by Old Main. The next reservation will be effective at once. If the possessors of the court are in the middle of a game, they may finish as long as it does not require more than 15 minutes.

A reservation must be taken up by 15 minutes past the hour, otherwise it is automatically cancelled. Anyone has a right to play on those courts not reserved.

Strike Clogs Work; Issue Is Arbitrated

(Continued From Page Seven)
\$1 per hour, not \$1.25, as it had been paying.

The issue still is unsettled, but an arbitration committee has been appointed to decide what the union scale is. Its decision will be accepted, it was indicated.

Back At Same Scale
Meanwhile, the men are back at work at the former wage rate of \$1.25 per hour, reliable sources said, on the union's promise to refund the difference in wage scales if the arbitration committee decides the prevailing union scale is anywhere below \$1.25 per hour.

College authorities reported the strike was peaceful and no disturbances occurred.

Unbeaten Since 1932, Booters Will Seek To Stretch Record

Eight-Game Schedule To Provide Crucial Test; 36 Of 40 Games Won



COACH BILL JEFFREY

Bill Jeffrey's soccermen will open a crucial 1938 campaign in October—crucial, for there are five undefeated seasons behind them.

The winning streak, in which the Lions have won 36 games out of 40 and tied 4, has established the Penn State aggregation as the strongest in collegiate competition. The last time Jeffrey's men were vanquished, was in 1932 when Syracuse came out on top in a thriller.

Included in the eight-game schedule will be Bucknell, Gettysburg, Army, Brown, Syracuse, Western Maryland, Navy, and Temple. Brown replaces Yale on State's roster.

Although some stars were lost by graduation, Coach Jeffrey will concentrate on the returning veterans to form the nucleus of a winning team.

Dick Haag will probably be at the goal, Bob Schuler, an all-American last year, right fullback, Dan Kirk and Dutch Lange will fight it out for the left fullback post vacated by Bill Boida.

WANT-ADS ARE SURE!

SAVE 50 CENTS ON YOUR DICTIONARY
Regular \$3.50 College Edition
WINSTON'S SIMPLIFIED DICTIONARY—\$3.00
Share the profits given to authorized Winston Agents.
SOLD BY A FELLOW STUDENT:
JAMES SHEFFER
311 S. Burrowes St. Phone 2687

Blue Color Scheme Is Used On New Handbook

A new color scheme highlights the 1938 '39 issue of the Freshman Handbook, published annually by the Penn State Christian Association.

Always bound in a black cover, the color was changed to blue and white this year.

Salvatore S. Sala '39, was editor, June C. Price '39, women's editor, and Julius Marjoni '40, business manager.

Jack Mahaffey and William H. Gross are co-captains of the Lion golf team.

SPORTS FILLERS

Raymond C. Blake is captain of the varsity baseball team.

Eugene Wetstone is the new gymnastics coach.

Raymond S. Coskery is captain of the lacrosse team.

Donald G. Bachman is captain of the wrestling team.

WELCOME TO PENN STATE!
We hope You Will Enjoy Our Town and Campus... We Know You Will Enjoy the Fine Flavor of Quality Meats from

COOK'S MARKET
SOUTH FRAZIER STREET

HILAND SHOP
LAUNDERERS and DRY CLEANERS

Welcomes the Class of '42.
The Best Place in Town to Have Your Cleaning and Pressing Done.

220 1/2 S. Allen St. Dial 3171

Hello, 1942! Eat at "Boots" Diner
Opposite Old Main

Lunches and Dinners Special Platters

24-Hour Service "Boots" Ripka, Prop.

SCHILLING
REPAIRS OF ALL KINDS
Keys Made
Lawn Mowers and Ice Skates Sharpened
Pugh Street Near Campus

WELCOME FRESHMEN!

Dine at the Centre
"State College's Newest Restaurant"

Corner Beaver and Allen Streets
Opposite Post Office

GEO. L. SMITH'S
Powder Puff Barber and Beauty Shoppe
XERVAC BY APPOINTMENT
BEAUTY, CRAFT IN ALL BRANCHES

Pioneer Shop 107 Allen Street Dial 2201
Established 1920 State College

Welcome to State!
— Class of 1942 —

- STORAGE
- LUBRICATION
- OVERHAULING
- REPAIRING

Eckley Garage
116 McAllister St., Dial 833

Welcome, Freshmen

Vist Our Complete Line of **RADIOS, Lamps,** and Other Room Supplies

GENTZEL'S
200 E. College Ave.
Right Opposite Front Campus

4 New Maple Alleys—8 Alleys Thoroughly Reconditioned—
Now as Good as New. Better Ventilation and Proper Humidity
Entire Building Sprinkled; Therefore, Lockers May Be Used with Safety.

THE DUX CLUB
Pugh Street