

PENN STATE COLLEGIAN

Successor to The Free Lance, established 1887

Published semi-weekly during the College year, except on holidays, by students of The Pennsylvania State College, in the interest of the College, the students, faculty, alumni, and friends.

APPROVED FOR NATIONAL ADVERTISING SERVICE, Inc. National Advertising Service, Inc. College Publishers Representative

- THE MANAGING BOARD: CHARLES M. WHEELER, JR. '38 Editor; JEROME WEINSTEIN '38 Managing Editor; FRANCIS H. SZYMCAK '38 News Editor; WOODROW W. BIERLY '38 Feature Editor; SHIRLEY R. HELMAN '38 Women's Editor; GEORGIA H. POWERS '38 Associate Women's Editor

OLD MANIA

One! Two! Three! Four! We're wondering what Col. Venable is going to do about his ROTC parades this Spring. (Spring is here.)

Proposed excavation for the RE bldg. places the army field out of the question while giant ant hills on Holmes Field aren't conducive to straight lines.

We have two suggestions. One is the football field. The boys could march about the cinder track. Col. Venable and his assistants could park in the press box, and the spectators could cheer from the bleachers.

And We Weren't Plastered: Most disgusting was the couple sitting in seats 5 and 6 of Row I at Saturday night's Players' show.

P. S. U. or U. C. P.:

With the tabulation of ballots on changing the College name poll, several things of note have arisen. Names suggested were "Baa! Baa!! and Moo! Moo! College" and "Academy of Fine Arts and Agriculture."

Kulp's Catastrophe: Jack Kulp made an impressive entrance, escorting Dena Ray to the Theta Xi dinner dance on Saturday night.

Cresswell and Canines:

In Soc. 5 class two ferocious canines were gnipping each other by the throat, growling and snarling. Co-eds quaked. Hat men shivered.

Strip Tease:

One of the co-eds at the Beta Shamrock mance burst into the dining room to find Eddie Gilek dressed only in one oversized shirt.

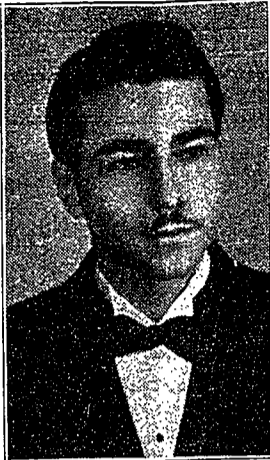
Pin Points:

Ridge Riley broke his all-time record of attending Kappa formals when the PIAA reporting kept him away on Saturday night.

- HOPE OF HEAVEN . . . \$2.00 By JOHN O'HARA; ACTION AT AQUILA . . \$2.50 By HERVEY ALLEN; JOSEPH IN EGYPT . . \$5.00 By THOMAS MANN; THE UNVANQUISHED . \$2.50 By WILLIAM FAULKNER; THESE FOREIGNERS . \$2.50 By WILLIAM SEABROOK; THE TYRANNY OF WORDS . . . \$2.50 By STUART CHASE; THE FOLKLORE OF CAPITALISM . . \$3.00 By THURMAN ARNOLD; U. S. A. \$3.00 By JOHN DOS PASSOS; CONCERT PITCH . . . \$2.50 By ELLIOT PAUL; THE PRODIGAL PARENTS \$2.50 By SINCLAIR LEWIS; A PRAIRIE GROVE . . \$2.50 By DONALD C. PEATTIE

For First Editions, Rare and Out-of-Print Books Try Our Search Service, for Which There Is No Charge. KEELER'S CATHAUM THEATRE BLDG.

Debates Here



JUAN RODRIGUEZ

Forensic Teams To Have Debate

Young, Matz To Oppose Touring Puerto Ricans On Subject Of Foreign Policy

Puerto Rico's touring debate team encounters Fred L. Young, Jr. '38 and J. Edwin Matz '38 in an orthodox session in Schwab auditorium Thursday night at 8:15 o'clock.

"Should an American League of Nations be established?" will be the issue discussed, the Puerto Rican team taking the negative.

Meet Outstanding Teams

The debate will be the second in a series of nine for the Puerto Ricans who are meeting the outstanding collegiate teams in the east in their sixth annual tour of this country.

Initial competition will be with the University of Pennsylvania, with debates against George Washington University, University of Pittsburgh, Middlebury College, Holy Cross, Colgate, Boston University, and Columbia following in that order after the Penn State meet, completing the tour.

2 Parties Merge For '39 Election

(Continued From Page One) Mineral Industries: Peter G. Seder; Physical Education: Victor E. Gentilman.

CLASS OF 1940

Campus—President: Walter A. Jones, Jr.; Vice President: Stephen T. Rollins; Secretary: Richard L. Britton; Treasurer: Bernard A. Newman.

CLASS OF 1941

Campus—President: Arnold C. Laich; Vice President: William E. Fowler; Secretary: John W. Fritz, Jr.; Treasurer: Larry C. Higgins, Jr.

CLASS OF 1941

Campus—President: Walter M. Kniaz; Vice President: Charles R. Clemson; Secretary: Frank W. Stanke; Treasurer: Edward Sapp.

FOOT LIGHTS

"The Dybbuk"

"The Dybbuk," a play in three acts by S. Ansky, produced and directed by Frank S. Neusbaum, assisted by Ida Bickley; settings by Oliver Smith and Tom Ainsworth; construction by Karl Bretney; painting by Sarahelle Shirm; properties by Eleanor Hoffer; lights by Edward Catlin; makeup by Anron Zander; wigs and hair by Zander Bros.; costumes by Meth and Gropper; produced on Friday and Saturday in Schwab auditorium as the third play of the current season by Penn State Players, A. C. Cloetingh, director.

THE CAST

Table listing cast members and roles: First Batlon: Bernard Schechtman; Second Batlon: Herman Costow; Third Batlon: Martin Gross; The Messenger: Harry Reed; Meyer, the Shamma of the Synagogue: Clay Donges; An Elderly Woman: Doris Gutman; Two Children: Nancy Neusbaum, Charles Diel; Channon, a young scholar: Robert Robinson; Chennoch, a young scholar: Verna Sevast; Leah, daughter of Sender: Jane Eames; Prade, her old nurse: Bernice Hunn; Asher, her companion: George Bernstein; Sender: Bernard Freed; A Wedding Guest: George Bernstein; Bessia, another friend of Leah's: Ruth Wagner; Nachmon, the bridegroom's father: David Jackson; Rahbi Mendel, of the bridegroom's party: Herman Costow; Menashe, the bridegroom: Joe Dobbs; Rabbi Azrael, the Rabbi of Miropol: Bernard Schechtman; Michael, his attendant: Joe Dobbs; Rabbi Samson, the City Rabbi: Herbert Doroshow; Scholars, beggars, and musicians in and about the synagogue: [unspecified].

The Penn State Players and Director Frank S. Neusbaum surprised us with a splendid performance of a difficult play in the presentation of Ansky's "The Dybbuk."

It was something different for a Players' show but satisfied the large-ly-adult, mostly Jewish audience in a way that made one forget that the play was not the type that should be given in a College auditorium.

The fact that the play was poorly attended is evidence that students wish to pay to be entertained and the Players, therefore, must be content with faculty and townfolk audiences at their heavier productions.

The play was a colorful, eccentric, and strangely cabalistic evening in the theatre. The plot was, in brief, a hovering between the mystic and the real. It was a successful attempt to transmit the spirit of the Jewish Chassidic as it existed hundreds of years ago.

The play synchronized all the arts of the theatre . . . song, dance, and acting. It was not a vehicle for stars, but rather depended to a great extent on group movements.

In short . . . Channon, a Talmud student in love with Leah, daughter of a rich man, finds the girl betrothed to another, and in despair, gives up the Talmud for the Cabala and departs from reality and earthly being.

There were some splendid portrayals. Charles Diel was notable as Channon. Verna Sevast played her leading role to the ultimate. Bernard Schechtman did a swell job in his several roles, principally as Rabbi Azrael. Harry Reed was a fine messenger and Doris Gutman did well in the old woman character. Joe Dobbs was very effective as the nervous and reluctant bridegroom. Bernice Hunn and Ruth Wagner were pleasant relief from the ritual when the going became a little tedious.

The dance numbers in the first and second acts were splendid and credit for their authenticity should go to Jessie Cameron and Ruth Shtsel. But the drum, or something, made

Collegian Begins Poll On 3 Subjects Today

Held over one day, the Collegian's survey of student opinion on questions of peace, neutrality, and R. O. T. C., will begin at 9 o'clock this morning and continue until noon Saturday. Ballots will be available at the Student Union desk.

FOR SALE! Home Sites Business Sites in State College Eugene H. Lederer GENERAL REAL ESTATE 114 E. Beaver Phone 4066

ROTC Band Plays Winter Concert

The sophomore R. O. T. C. band, under the supervision of W. O. Thompson, College bandmaster, gave the fifth in the series of mid-winter concerts in Schwab auditorium Sunday afternoon.

Student directors were Albert P. Lyford '38 and Frederick H. Serff '38, senior majors in the curriculum of music education.

The program included: "March of the Brave," J. S. Zamecnic; "The Caliph of Bagdad," overture; Soldiers' Chorus from "Faust," Charles Gounod; concert waltz, "On the Beautiful Blue Danube," Johann Strauss; "1776"—descriptive scenes of the American War of Independence, J. S. Zamecnic; and march, "The Captain General," Marie Louka.

Tree Foils Blight, Then Building Program

Penn State has a pear tree that won't be do'ned—not even by a five-million-dollar building program. The tree is standing on the site of one of the new buildings and it can't be cut, though it will condescend to being moved.

The tree is valuable in that for the 12 years of its life, it has successfully resisted fire blight, a disease that no other pear tree has been able to withstand. From it is being developed a new strain of fruit.

Now known as the "Richard Peters," this tree was developed accidentally from a chance seedling in connection with fire blight studies of Dr. Ernest L. Nixon, research specialist in plant pathology. Cuttings from the tree have been sent to research stations in a dozen different states and in four foreign countries.

Illustration of a shoe with price tag \$7.50

Foot Notes

Take a note for smarter stepping this season and look over this new Jarman Custom "all white" brogue—Drop in and look over our other new Jarman Custom Sport, \$7.50, most styles.

Jarman SHOES FOR MEN \$5 to \$750 Most Styles

WATCH OUR WINDOWS fromm's Opposite Old Main - State College

PORTER & WEBER PAINTING, PAPER HANGING and DECORATING WALL PAPER and PAINTS Headquarters for SHERWIN WILLIAMS PAINTS IMPERIAL WALL PAPERS 125 S. Frazier St. Phone 2793